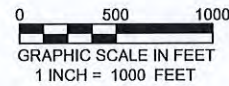
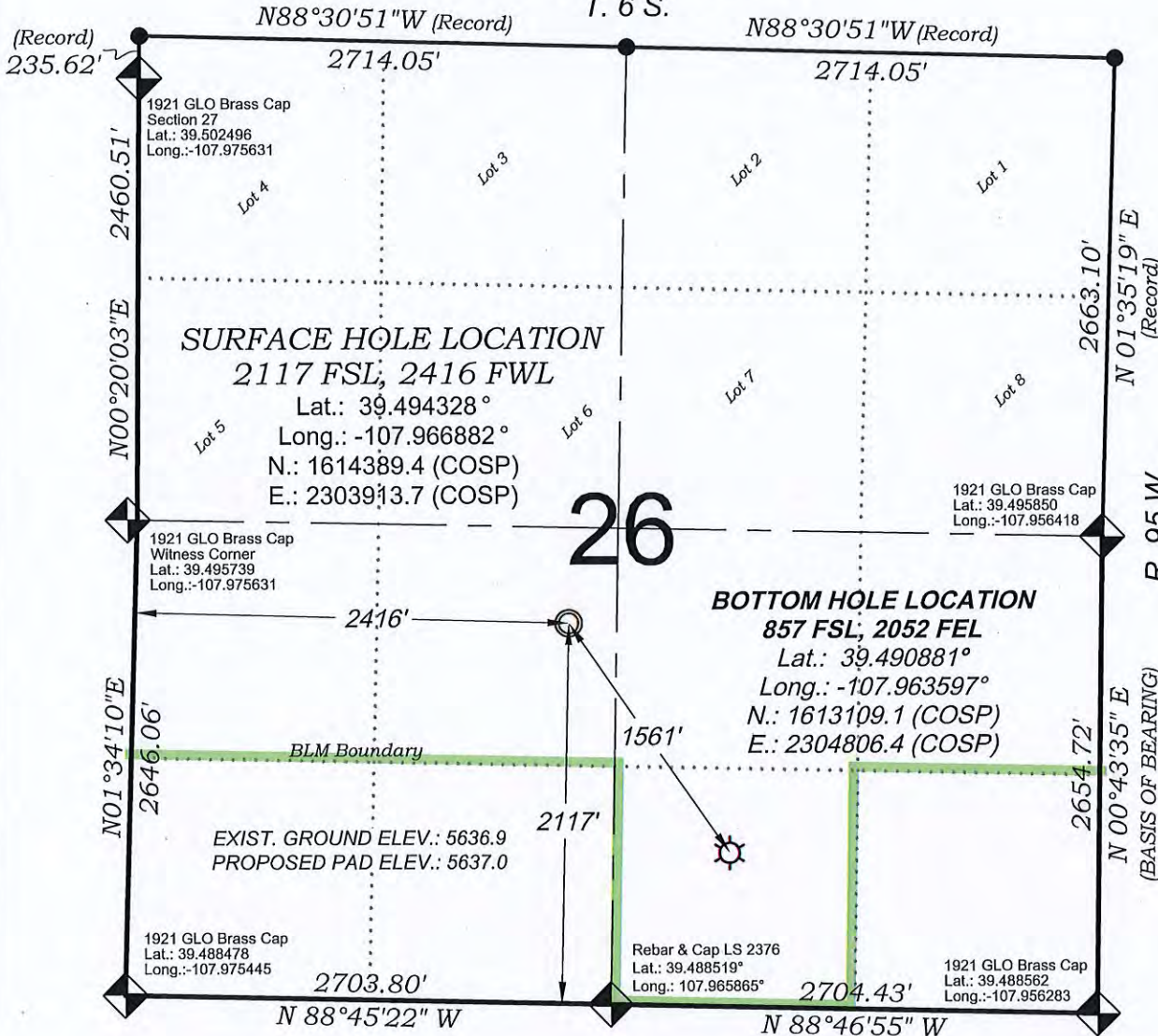


# Federal PA 334-26

T. 6 S.



SEE CONSTRUCTION LAYOUT PLAT  
 FOR VISIBLE IMPROVEMENTS  
 WITHIN 500' OF THIS LOCATION

## - LEGEND -

- FIELD LOCATED SECTION MONUMENTS AS DESCRIBED
- FIELD SURVEYED WELL LOCATION
- CALCULATED BOTTOM HOLE LOCATION
- CALCULATED SECTION CORNER LOCATION

## SURVEYORS STATEMENT

I, MICHAEL J. LANGHORNE, A REGISTERED LAND SURVEYOR IN THE STATE OF COLORADO DO HEREBY CERTIFY THAT THE SURVEY SHOWN HEREON WAS PREPARED UNDER MY DIRECT SUPERVISION AND HAS BEEN STAKED ON THE GROUND AS SHOWN ON THE PLAT AND CHECKING THAT THIS MAP IS A TRUE REPRESENTATION THEREOF.

MICHAEL J. LANGHORNE, COLORADO REGISTRATION NO. 36572  
 FOR AND ON BEHALF OF  
 BOOKCLIFF SURVEY SERVICES, INC.

## REFERENCES

- 1) Resurvey and Extension Survey T. 6 S., R. 95 W., 6th P.M (GLO PLAT)
- 2) U.S.G.S. QUAD: RULISON, CO

## NOTES

- 1) ELEVATIONS BASED ON N.A.V.D. 1988 PUBLISHED COORDINATES.
- 2) LATITUDES AND LONGITUDES ARE BASE ON NAD 83, PUBLISHED COORDINATES
- 3) STATE PLANE COORDINATES ARE BASED ON COLORADO CENTRAL ZONE, U.S. SURVEY FEET.
- 4) ELEVATION MASK SET TO 15"
- 5) GPS OPERATOR J. KIRKPATRICK, OBSERVED A PDOP 1.0 ON SURVEY POINT NUMBER 153.
- 6) SURFACE AND BOTTOM HOLE LOCATIONS ARE MEASURED 90° FROM SECTION LINES.

## WELL LOCATION PLAT Prepared for:



TEP Rocky Mountain LLC

NE1/4 SW1/4, SECTION 26  
 T. 6 S., R. 95 W. of the 6th. P.M.  
 GARFIELD COUNTY, COLORADO

136 East Third Street  
 Rifle, Colorado  
 81650 Ph. (970)  
 625-2720 Fax (970)  
 625-2773



**BOOKCLIFF**  
 Survey Services, Inc.

SURVEY DATE: 4/12/12  
 MAP DATE: 6/16/17  
 SCALE: 1" = 1000'  
 PLAT: 1 of 1  
 PROJECT: TEP Valley