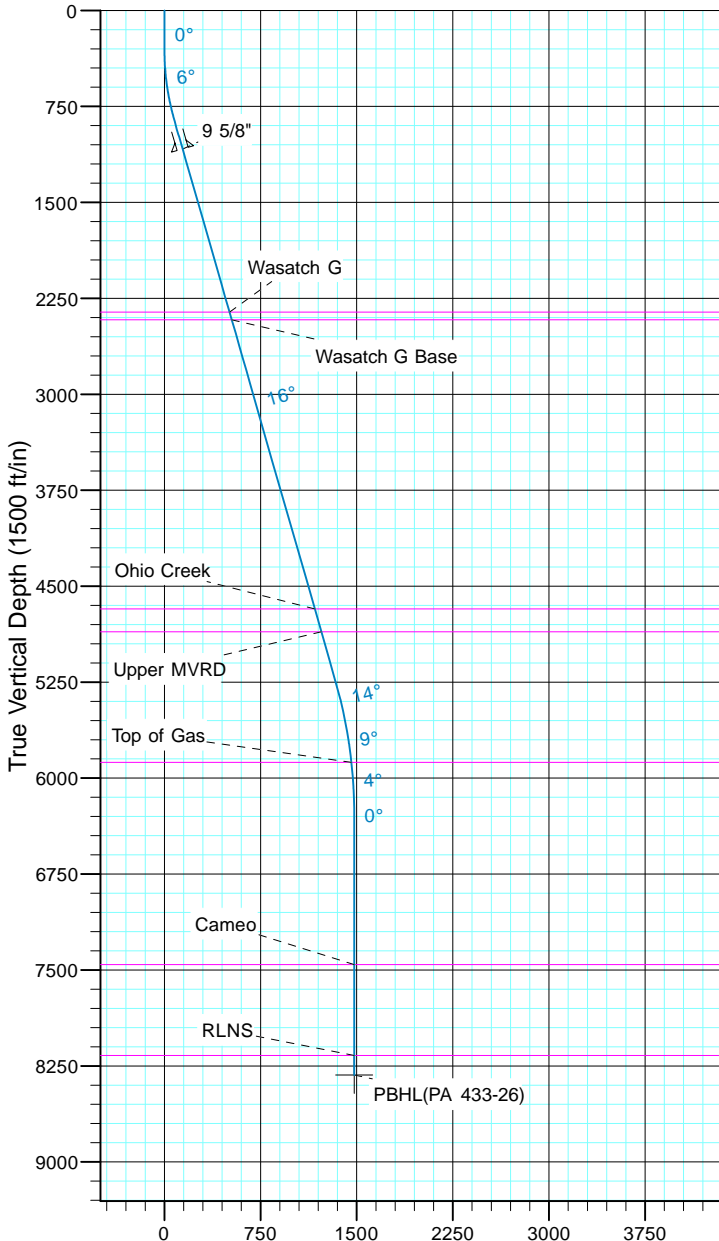


TEP Rocky Mountain LLC
Project: Garfield County, CO NAD83
Site: PA 23-26 Pad
Well: PA 433-26
Wellbore: OH
Design: Plan #1



Azimuths to True North
Magnetic North: 9.70°

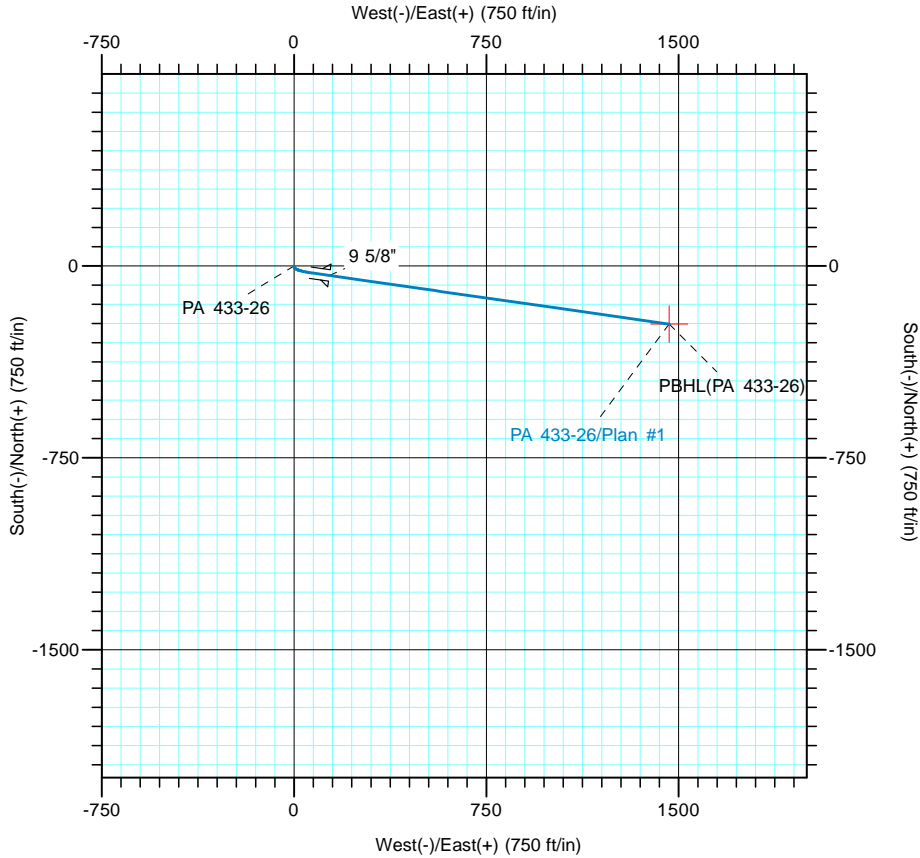
Magnetic Field
Strength: 51543.2snT
Dip Angle: 65.59°
Date: 5/19/2017
Model: IGRF2015



Vertical Section at 98.84° (1500 ft/in)

CASING DETAILS
No casing data is available

FORMATION TOP DETAILS		
TVDPath	MDPath	Formation
2358.0	2426.1	Wasatch G
2418.0	2488.5	Wasatch G Base
4678.0	4839.5	Ohio Creek
4858.0	5026.8	Upper MVRD
5878.0	6075.0	Top of Gas
7458.0	7655.8	Cameo
8168.0	8365.8	RLNS



DESIGN TARGET DETAILS							
Name	TVD	+N/-S	+E/-W	Northing	Easting	Latitude	Longitude
PBHL(PA 433-26)	8321.0	-227.7	1463.3	1614122.60	2305407.80	39° 29' 37.313 N	107° 57' 41.689 W

SECTION DETAILS										
Sec	MD	Inc	Azi	TVD	+N/-S	+E/-W	Dleg	TFace	VSect	Target
1	0.0	0.00	0.00	0.0	0.0	0.0	0.00	0.00	0.0	
2	180.0	0.00	0.00	180.0	0.0	0.0	0.00	0.00	0.0	
3	330.0	3.00	180.00	329.9	-3.9	0.0	2.00	180.00	0.6	
4	858.2	16.00	98.16	850.9	-28.2	72.5	3.00	-92.36	76.0	
5	5419.2	16.00	98.16	5235.3	-206.7	1316.8	0.00	0.00	1333.0	
6	6485.8	0.00	0.00	6288.0	-227.7	1463.3	1.50	180.00	1480.9	
7	8518.8	0.00	0.00	8321.0	-227.7	1463.3	0.00	0.00	1480.9	PBHL(PA 433-26)