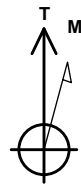


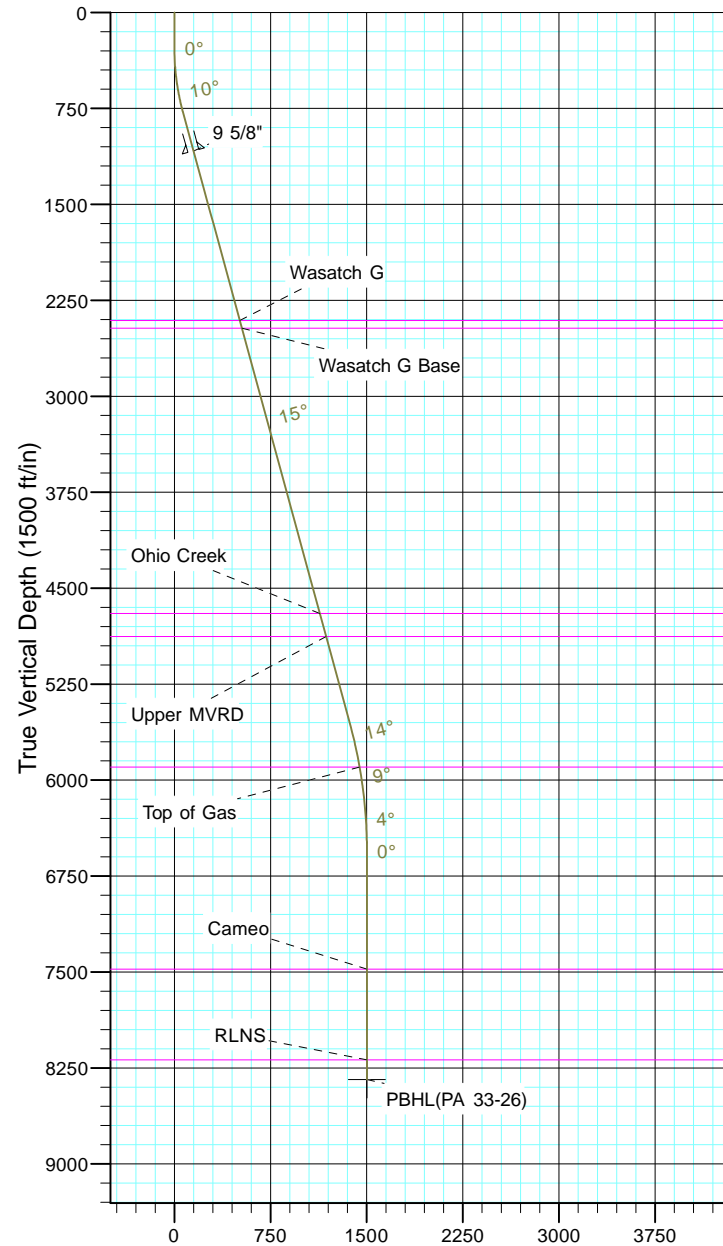
# TEP Rocky Mountain LLC

Project: Garfield County, CO NAD83  
 Site: PA 23-26 Pad  
 Well: PA 33-26  
 Wellbore: OH  
 Design: Plan #1



Azimuths to True North  
 Magnetic North: 9.70°

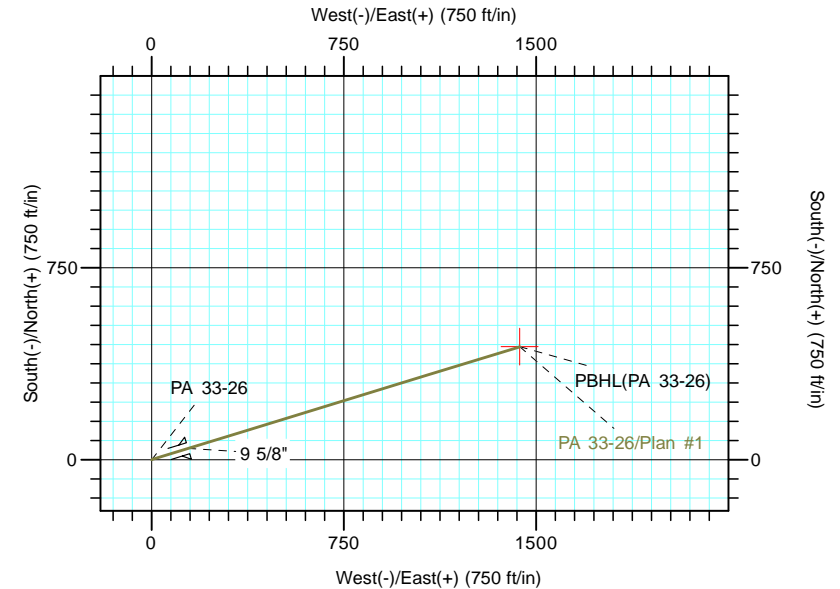
Magnetic Field  
 Strength: 51543.2snT  
 Dip Angle: 65.59°  
 Date: 5/19/2017  
 Model: IGRF2015



Vertical Section at 72.91° (1500 ft/in)

CASING DETAILS			
TVD	MD	Name	Size
1083.0	1100.0	9 5/8"	9.625

FORMATION TOP DETAILS		
TVDPath	MDPath	Formation
2408.0	2473.3	Wasatch G
2468.0	2535.5	Wasatch G Base
4698.0	4846.9	Ohio Creek
4878.0	5033.4	Upper MVRD
5898.0	6086.7	Top of Gas
7478.0	7670.0	Cameo
8188.0	8380.0	RLNS



DESIGN TARGET DETAILS						
Name	TVD	+N/-S	+E/-W	Northing	Easting	Latitude
PBHL(PA 33-26)	8341.0	441.3	1435.7	1614792.40	2305420.90	39° 29' 43.934 N
						107° 57' 41.753 W

SECTION DETAILS										
Sec	MD	Inc	Azi	TVD	+N/-S	+E/-W	Dleg	TFace	VSect	Target
1	0.0	0.00	0.00	0.0	0.0	0.0	0.00	0.00	0.0	
2	280.0	0.00	0.00	280.0	0.0	0.0	0.00	0.00	0.0	
3	788.3	15.25	72.91	782.3	19.8	64.3	3.00	72.91	67.2	
4	5732.5	15.25	72.91	5552.4	401.8	1307.2	0.00	0.00	1367.5	
5	6749.0	0.00	0.00	6557.0	441.3	1435.7	1.50	180.00	1502.0	
6	8533.0	0.00	0.00	8341.0	441.3	1435.7	0.00	0.00	1502.0	PBHL(PA 33-26)