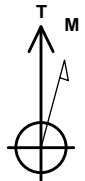
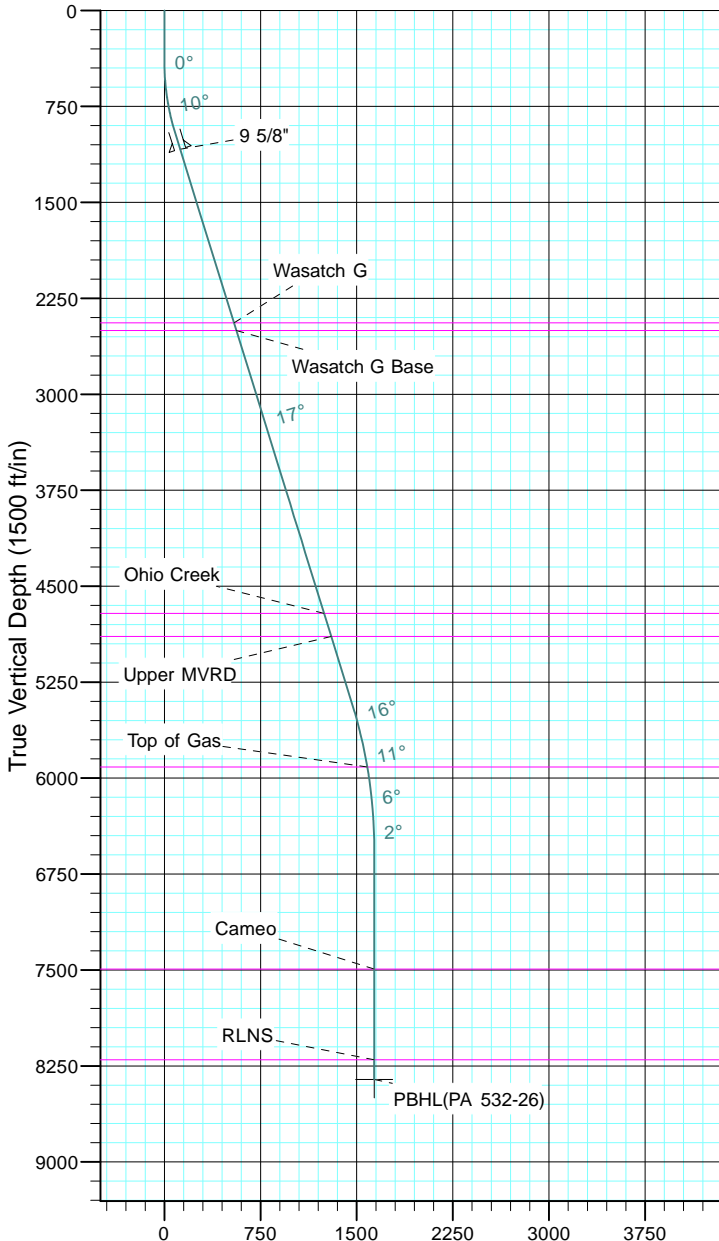


TEP Rocky Mountain LLC
Project: Garfield County, CO NAD83
Site: PA 23-26 Pad
Well: PA 532-26
Wellbore: OH
Design: Plan #1



Azimuths to True North
Magnetic North: 9.70°

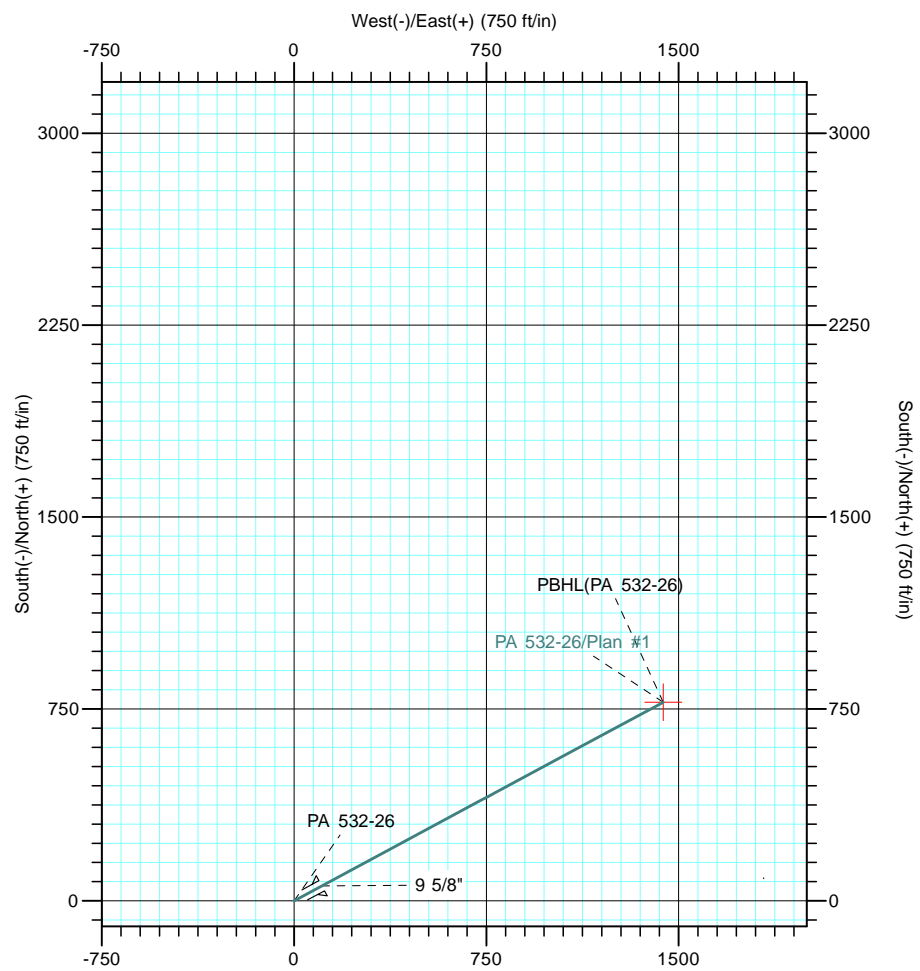
Magnetic Field
Strength: 51543.2nT
Dip Angle: 65.59°
Date: 5/19/2017
Model: IGRF2015



Vertical Section at 61.67° (1500 ft/in)

CASING DETAILS			
TVD	MD	Name	Size
1085.8	1100.0	9 5/8"	9.625

FORMATION TOP DETAILS		
TVDPath	MDPath	Formation
2443.0	2520.8	Wasatch G
2503.0	2583.6	Wasatch G Base
4713.0	4897.1	Ohio Creek
4893.0	5085.5	Upper MVRD
5913.0	6144.5	Top of Gas
7493.0	7727.5	Cameo
8203.0	8437.5	RLNS



DESIGN TARGET DETAILS						
Name	TVD	+N/-S	+E/-W	Northing	Easting	Latitude
PBHL(PA 532-26)	8356.0	776.6	1440.7	1615127.30	2305427.50	39° 29' 47.244 N

						Longitude
						107° 57' 41.785 W

SECTION DETAILS										
Sec	MD	Inc	Azi	TVD	+N/-S	+E/-W	Dleg	TFace	VSect	Target
1	0.0	0.00	0.00	0.0	0.0	0.0	0.00	0.00	0.0	
2	400.0	0.00	0.00	400.0	0.0	0.0	0.00	0.00	0.0	
3	973.4	17.20	61.67	964.9	40.5	75.2	3.00	61.67	85.4	
4	5640.7	17.20	61.67	5423.3	695.5	1290.3	0.00	0.00	1465.8	
5	6787.5	0.00	0.00	6553.0	776.6	1440.7	1.50	180.00	1636.7	
6	8590.5	0.00	0.00	8356.0	776.6	1440.7	0.00	0.00	1636.7	PBHL(PA 532-26)