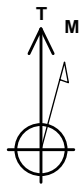


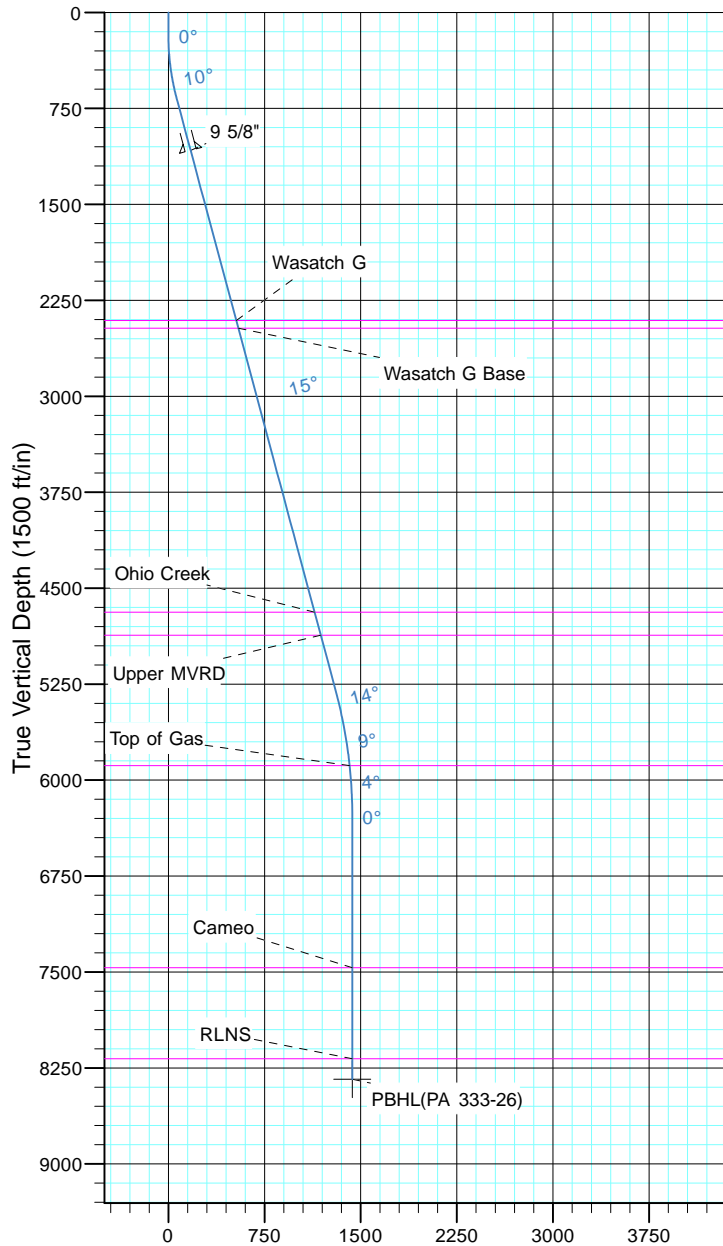
# TEP Rocky Mountain LLC

Project: Garfield County, CO NAD83  
 Site: PA 23-26 Pad  
 Well: PA 333-26  
 Wellbore: OH  
 Design: Plan #1



Azimuths to True North  
 Magnetic North: 9.70°

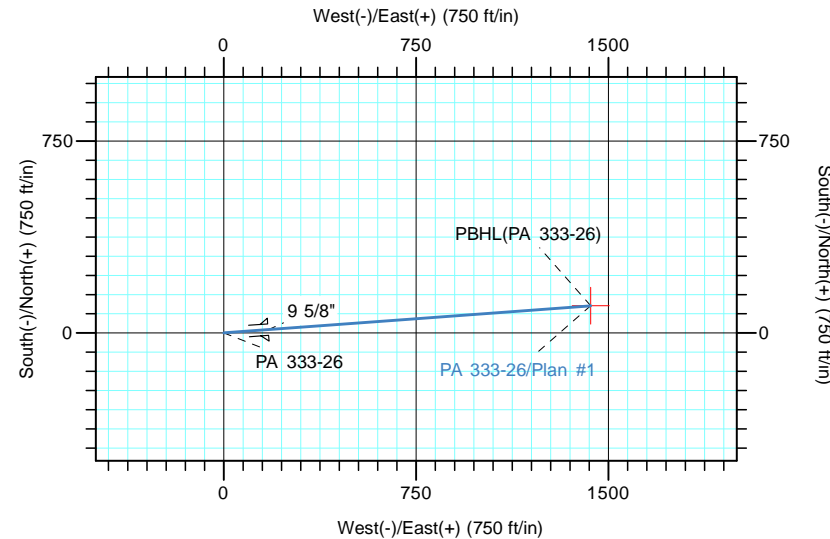
Magnetic Field  
 Strength: 51543.2snT  
 Dip Angle: 65.59°  
 Date: 5/19/2017  
 Model: IGRF2015



Vertical Section at 85.76° (1500 ft/in)

TVD	MD	Name	Size
1080.0	1100.0	9 5/8"	9.625

TVDPATH	MDPATH	FORMATION
2408.0	2474.9	Wasatch G
2468.0	2537.0	Wasatch G Base
4688.0	4835.3	Ohio Creek
4868.0	5021.7	Upper MVRD
5888.0	6067.6	Top of Gas
7468.0	7648.3	Cameo
8178.0	8358.3	RLNS



Name	TVD	+N/-S	+E/-W	Northing	Easting	Latitude	Longitude
PBHL(PA 333-26)	8339.0	106.0	1430.8	1614457.50	2305414.40	39° 29' 40.623 N	107° 57' 41.720 W

Sec	MD	Inc	Azi	TVD	+N/-S	+E/-W	Dleg	TFace	Vsect	Target
1	0.0	0.00	0.00	0.0	0.0	0.0	0.00	0.00	0.0	
2	180.0	0.00	0.00	180.0	0.0	0.0	0.00	0.00	0.0	
3	680.1	15.00	85.76	674.4	4.8	64.9	3.00	85.76	65.1	
4	5468.1	15.00	85.76	5299.2	96.4	1301.0	0.00	0.00	1304.5	
5	6468.3	0.00	0.00	6288.0	106.0	1430.8	1.50	180.00	1434.7	
6	8519.3	0.00	0.00	8339.0	106.0	1430.8	0.00	0.00	1434.7	PBHL(PA 333-26)