

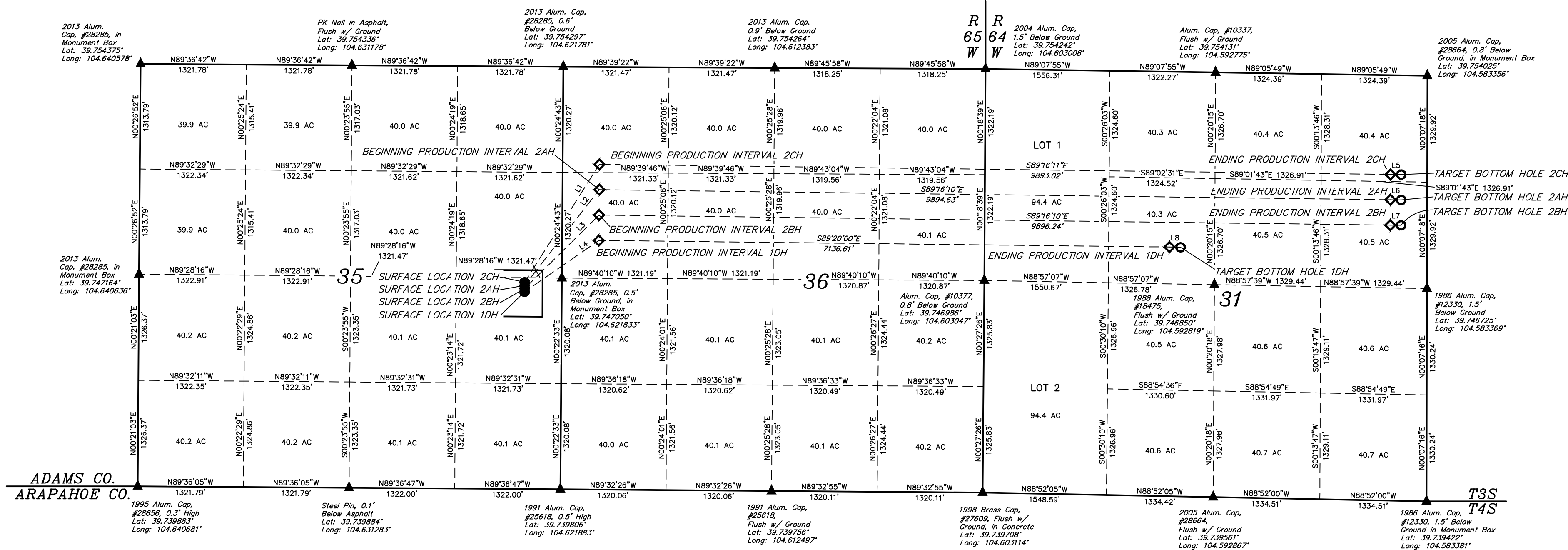
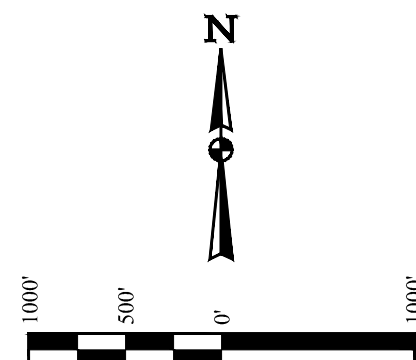
LEGEND:

- ▲ = SECTION CORNERS LOCATED. (NAD 83)
● = PROPOSED WELLHEAD.
◇ = PRODUCTION INTERVAL.
○ = TARGET BOTTOM HOLE.

T3S, R65W, 6th P.M.

ConocoPhillips Company

BIG SANDY #3-65 36-31 2CH, 2AH, 2BH & 1DH
NE 1/4 SE 1/4, SECTION 35, T3S, R65W, 6th P.M.
ADAMS COUNTY, COLORADO



LINE TABLE

LINE	DIRECTION	LENGTH
L1	N32°24'34"E	1745.67'
L2	N37°57'18"E	1517.89'
L3	N45°21'52"E	1309.15'
L4	N55°19'55"E	1130.09'
L5	S89°05'49"E	135.01'
L6	S89°05'49"E	135.01'
L7	S89°05'49"E	135.01'
L8	S88°43'01"E	138.03'

	WELL	SURFACE LOCATION	BEGINNING PRODUCTION INTERVAL	ENDING PRODUCTION INTERVAL	TARGET BOTTOM HOLE
	2CH	2585' FSL 465' FEL	1216' FNL 460' FWL	1240' FNL 460' FEL	1240' FNL 325' FEL
	2AH	2545' FSL 465' FEL	1533' FNL 460' FWL	1557' FNL 460' FEL	1557' FNL 325' FEL
	2BH	2505' FSL 465' FEL	1850' FNL 460' FWL	1874' FNL 460' FEL	1874' FNL 325' FEL
	1DH	2465' FSL 465' FEL	2167' FNL 460' FWL	2191' FNL 2313' FWL	2192' FNL 2451' FWL

BASIS OF BEARINGS

BASIS OF BEARINGS IS A G.P.S. OBSERVATION

BASIS OF ELEVATION

BENCHMARK 374 LOCATED ON THE SECTION LINE BETWEEN SECTIONS 12 & 13, T3S, R64W, 6th P.M., TAKEN FROM 1988 PUBLISHED DATUM BY THE UNITED STATES DEPARTMENT OF THE INTERIOR, GEOLOGICAL SURVEY AS BEING 6054.61 FEET.



UEL, LLC
Corporate Office * 85 South 200 East
Vernal, UT 84078 * (435) 789-1017

CERTIFICATE OF REGISTRATION
THIS IS TO CERTIFY THAT THE ABOVE-NAMED SURVEYOR HAS BEEN LICENSED BY THE STATE OF COLORADO AND THAT THE SAME ARE TRUE AND CORRECT TO THE BEST OF HIS KNOWLEDGE AND BELIEF.

REGISTERED LAND SURVEYOR
RECEIVED IN THE STATE OF COLORADO
STATE OF COLORADO LAND SURVEYING BOARD
REV: 2 07-25-17 J.J. (UPDATE FOOTAGE CALL)

SURVEYED BY	CHAD MEIERS, R.F.	07-05-17	SCALE
DRAWN BY	L.C.S.	10-17-16	1" = 1000'
SECTION BREAKDOWN			