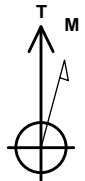
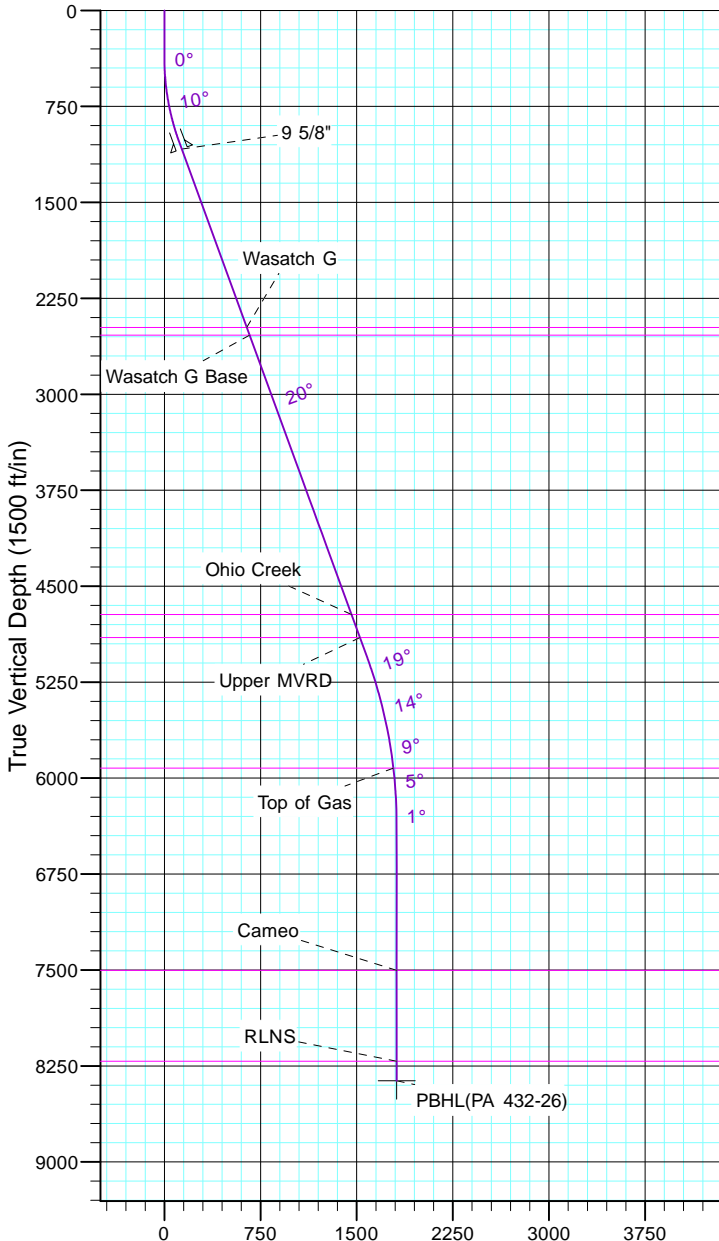


TEP Rocky Mountain LLC
Project: Garfield County, CO NAD83
Site: PA 23-26 Pad
Well: PA 432-26
Wellbore: OH
Design: Plan #1



Azimuths to True North
Magnetic North: 9.70°

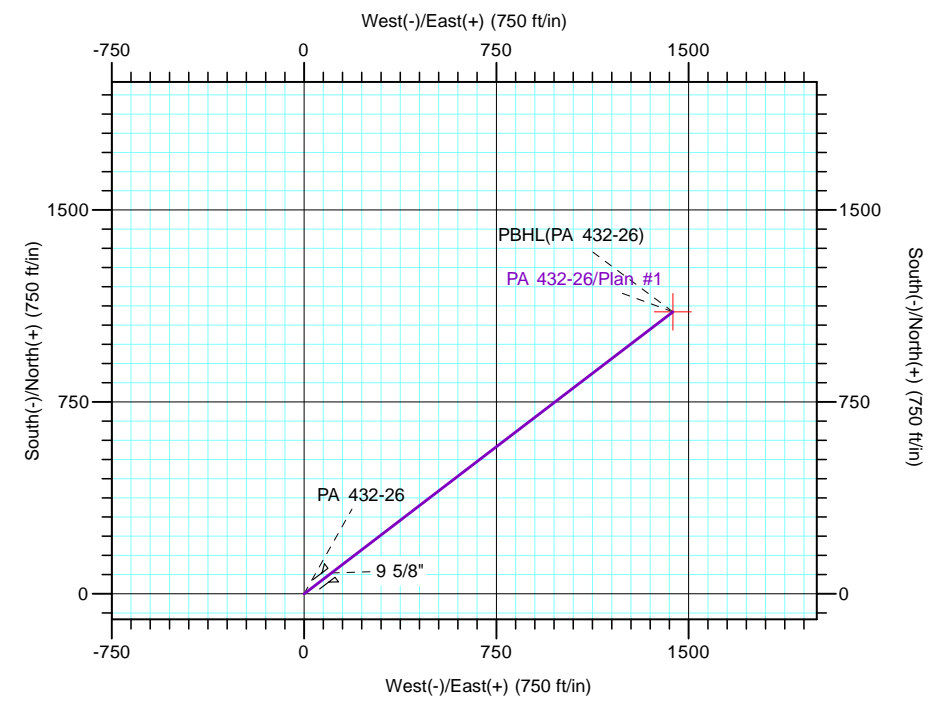
Magnetic Field
Strength: 51543.2snT
Dip Angle: 65.59°
Date: 5/19/2017
Model: IGRF2015



Vertical Section at 52.55° (1500 ft/in)

CASING DETAILS
No casing data is available

FORMATION TOP DETAILS		
TVDPath	MDPath	Formation
2478.0	2584.5	Wasatch G
2538.0	2648.4	Wasatch G Base
4723.0	4973.6	Ohio Creek
4903.0	5165.2	Upper MVRD
5923.0	6221.0	Top of Gas
7503.0	7802.0	Cameo
8213.0	8512.0	RLNS



DESIGN TARGET DETAILS							
Name	TVD	+N/-S	+E/-W	Northing	Easting	Latitude	Longitude
PBHL(PA 432-26)	8366.0	1101.6	1438.5	1615462.30	2305434.00	39° 29' 50.556 N	107° 57' 41.818 W

SECTION DETAILS										
Sec	MD	Inc	Azi	TVD	+N/-S	+E/-W	Dleg	TFace	VSect	Target
1	0.0	0.00	0.00	0.0	0.0	0.0	0.00	0.00	0.0	
2	375.0	0.00	0.00	375.0	0.0	0.0	0.00	0.00	0.0	
3	1041.7	20.00	52.55	1028.3	70.0	91.5	3.00	52.55	115.2	
4	5328.5	20.00	52.55	5056.5	961.5	1255.6	0.00	0.00	1581.5	
5	6662.0	0.00	0.00	6363.0	1101.6	1438.5	1.50	180.00	1811.9	
6	8665.0	0.00	0.00	8366.0	1101.6	1438.5	0.00	0.00	1811.9	PBHL(PA 432-26)