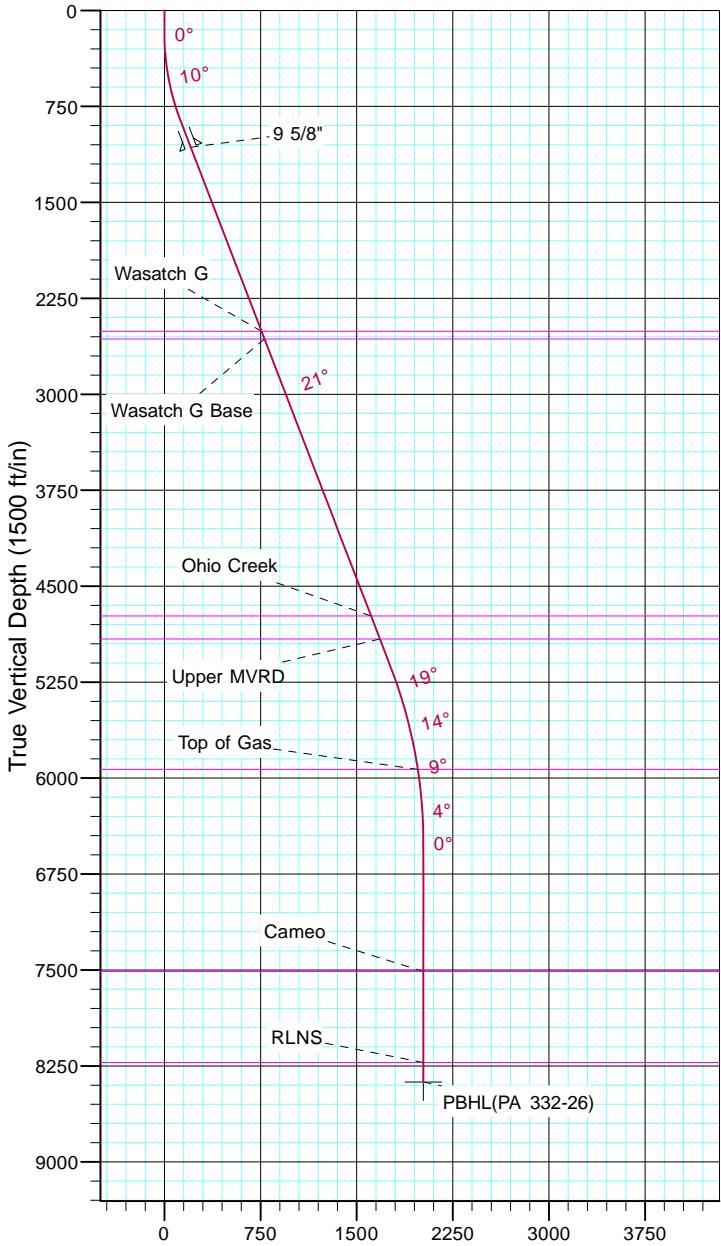


TEP Rocky Mountain LLC
Project: Garfield County, CO NAD83
Site: PA 23-26 Pad
Well: PA 332-26
Wellbore: OH
Design: Plan #1



Azimuths to True North
Magnetic North: 9.70°

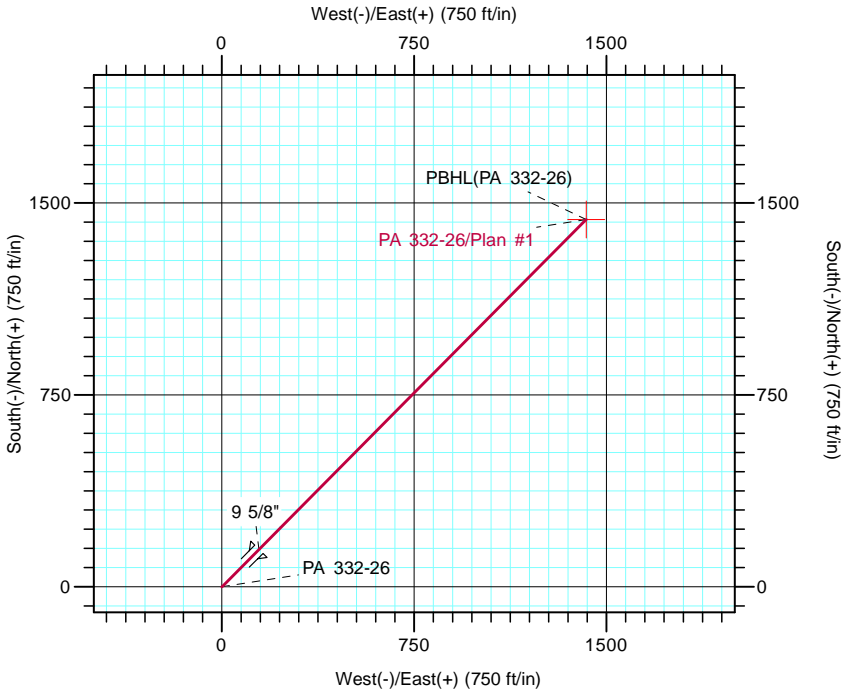
Magnetic Field
Strength: 51543.5nT
Dip Angle: 65.59°
Date: 5/18/2017
Model: IGRF2015



Vertical Section at 44.70° (1500 ft/in)

CASING DETAILS			
TVD	MD	Name	Size
1069.8	1100.0	9 5/8"	9.625

FORMATION TOP DETAILS		
TVDPath	MDPath	Formation
2508.0	2640.5	Wasatch G
2568.0	2704.8	Wasatch G Base
4733.0	5023.8	Ohio Creek
4913.0	5216.6	Upper MVRD
5933.0	6281.4	Top of Gas
7513.0	7863.6	Cameo
8223.0	8573.6	RLNS



DESIGN TARGET DETAILS						
Name	TVD	+N/-S	+E/-W	Northing	Easting	Latitude
PBHL(PA 332-26)	8376.0	1436.0	1421.0	1615797.20	2305440.60	39° 29' 53.867 N

SECTION DETAILS										
Sec	MD	Inc	Azi	TVD	+N/-S	+E/-W	Dleg	TFace	VSect	Target
1	0.0	0.00	0.00	0.0	0.0	0.0	0.00	0.00	0.0	
2	180.0	0.00	0.00	180.0	0.0	0.0	0.00	0.00	0.0	
3	880.0	21.00	44.70	864.4	90.2	89.2	3.00	44.70	126.8	
4	5455.6	21.00	44.70	5136.2	1255.7	1242.6	0.00	0.00	1766.6	
5	6855.6	0.00	0.00	6505.0	1436.0	1421.0	1.50	180.00	2020.2	
6	8726.6	0.00	0.00	8376.0	1436.0	1421.0	0.00	0.00	2020.2	PBHL(PA 332-26)