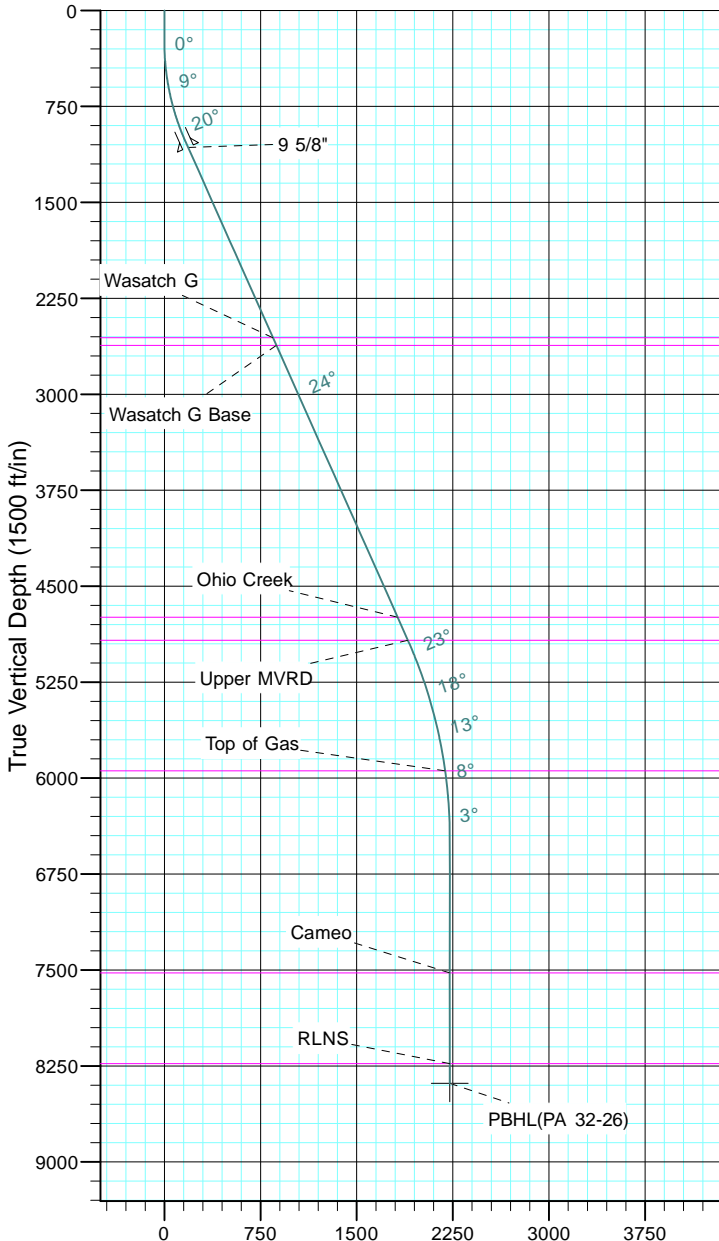


TEP Rocky Mountain LLC
Project: Garfield County, CO NAD83
Site: PA 23-26 Pad
Well: PA 32-26
Wellbore: OH
Design: Plan #1



Azimuths to True North
Magnetic North: 9.70°

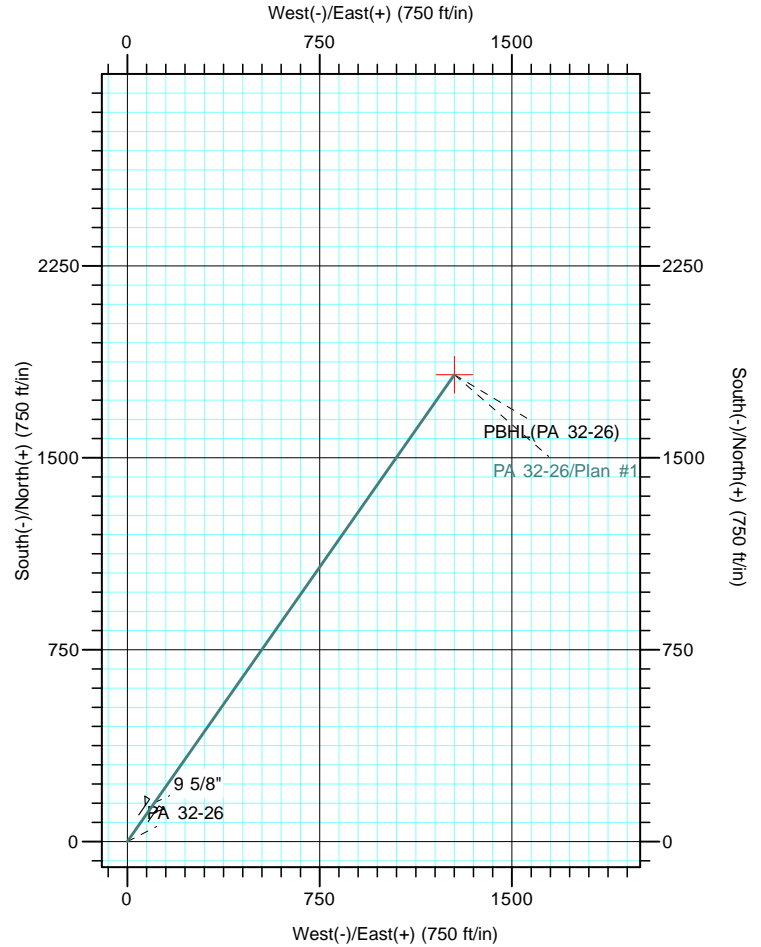
Magnetic Field
Strength: 51543.2snT
Dip Angle: 65.59°
Date: 5/19/2017
Model: IGRF2015



Vertical Section at 34.95° (1500 ft/in)

CASING DETAILS			
TVD	MD	Name	Size
1072.5	1100.0	9 5/8"	9.625

FORMATION TOP DETAILS		
TVDPath	MDPath	Formation
2558.0	2726.1	Wasatch G
2618.0	2791.8	Wasatch G Base
4743.0	5117.9	Ohio Creek
4923.0	5314.9	Upper MVRD
5943.0	6378.9	Top of Gas
7523.0	7960.6	Cameo
8233.0	8670.6	RLNS



DESIGN TARGET DETAILS						
Name	TVD	+N/-S	+E/-W	Northing	Easting	Latitude
PBHL(PA 32-26)	8386.0	1825.1	1275.6	1616190.00	2305298.30	39° 29' 57.709 N
		107° 57' 43.800 W				

SECTION DETAILS										
Sec	MD	Inc	Azi	TVD	+N/-S	+E/-W	Dleg	TFace	VSect	Target
1	0.0	0.00	0.00	0.0	0.0	0.0	0.00	0.00	0.0	
2	250.0	0.00	0.00	250.0	0.0	0.0	0.00	0.00	0.0	
3	1050.0	24.00	34.95	1026.8	135.3	94.6	3.00	34.95	165.1	
4	5306.6	24.00	34.95	4915.4	1554.4	1086.4	0.00	0.00	1896.4	
5	6906.6	0.00	0.00	6469.0	1825.1	1275.6	1.50	180.00	2226.7	
6	8823.6	0.00	0.00	8386.0	1825.1	1275.6	0.00	0.00	2226.7	PBHL(PA 32-26)