

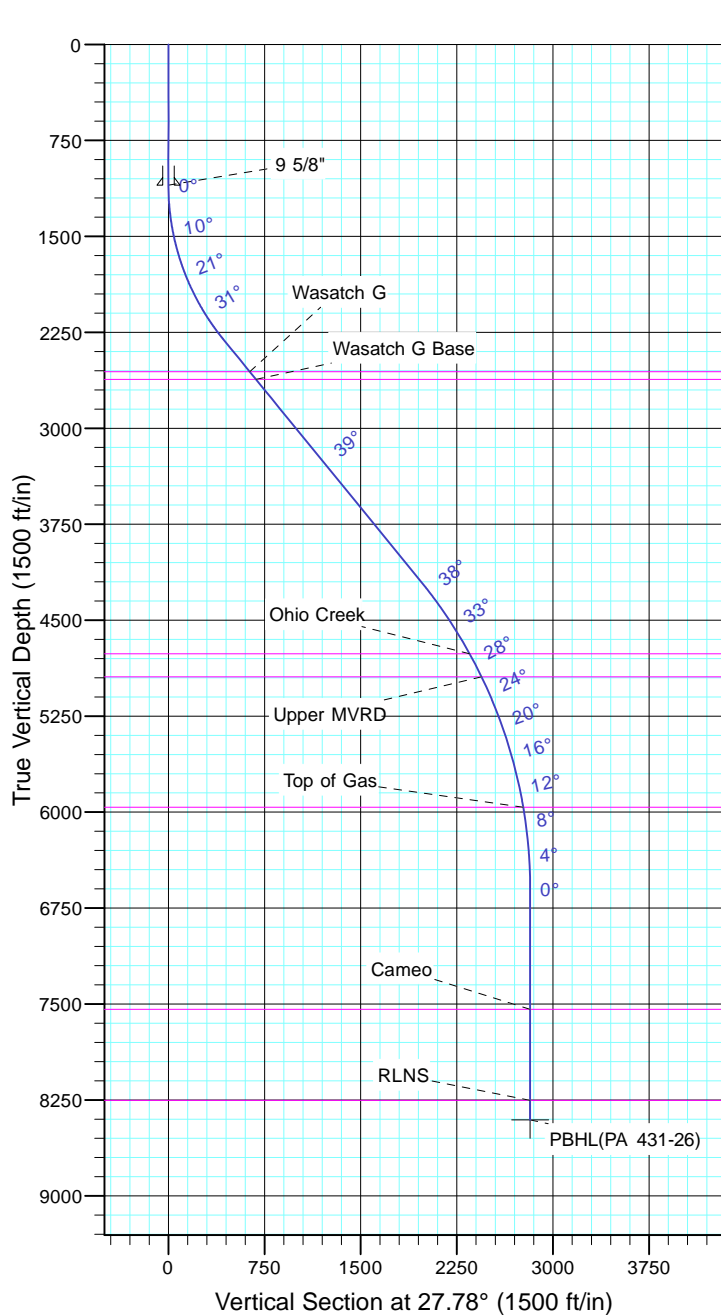
TEP Rocky Mountain LLC

Project: Garfield County, CO NAD83
 Site: PA 23-26 Pad
 Well: PA 431-26
 Wellbore: OH
 Design: Plan #1



Azimuths to True North
 Magnetic North: 9.70°

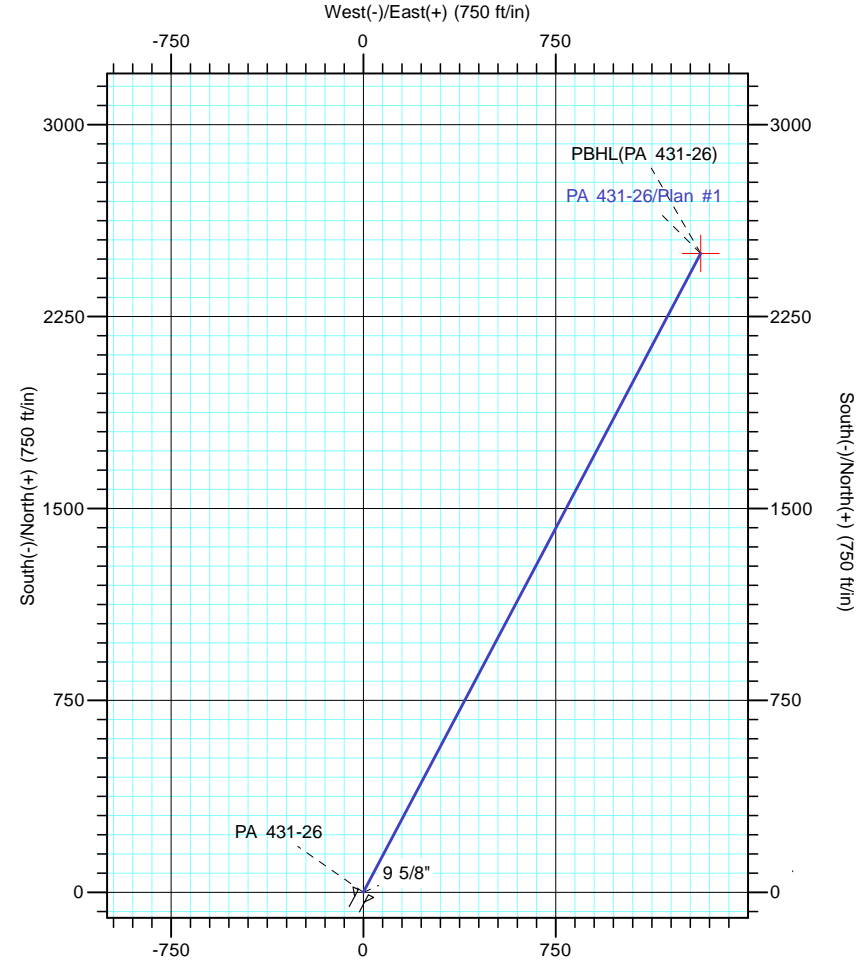
Magnetic Field
 Strength: 51543.2snT
 Dip Angle: 65.59°
 Date: 5/19/2017
 Model: IGRF2015



CASING DETAILS
 No casing data is available

FORMATION TOP DETAILS

TVDPPath	MDPath	Formation
2558.0	2730.3	Wasatch G
2618.0	2807.7	Wasatch G Base
4763.0	5527.2	Ohio Creek
4943.0	5729.7	Upper MVRD
5963.0	6804.0	Top of Gas
7543.0	8387.0	Cameo
8253.0	9097.0	RLNS



DESIGN TARGET DETAILS

Name	TVD	+N/-S	+E/-W	Northing	Easting	Latitude	Longitude
PBHL(PA 431-26)	8406.0	2496.9	1315.5	1616859.90	2305311.40	39° 30' 4.331 N	107° 57' 43.864 W

SECTION DETAILS

Sec	MD	Inc	Azi	TVD	+N/-S	+E/-W	Dleg	TFace	VSect	Target
1	0.0	0.00	0.00	0.0	0.0	0.0	0.00	0.00	0.0	
2	1100.0	0.00	0.00	1100.0	0.0	0.0	0.00	0.00	0.0	
3	2405.5	39.17	27.78	2306.2	379.6	200.0	3.00	27.78	429.1	
4	4836.0	39.17	27.78	4190.6	1737.7	915.5	0.00	0.00	1964.1	
5	7447.0	0.00	0.00	6603.0	2496.9	1315.5	1.50	180.00	2822.3	
6	9250.0	0.00	0.00	8406.0	2496.9	1315.5	0.00	0.00	2822.3	PBHL(PA 431-26)