

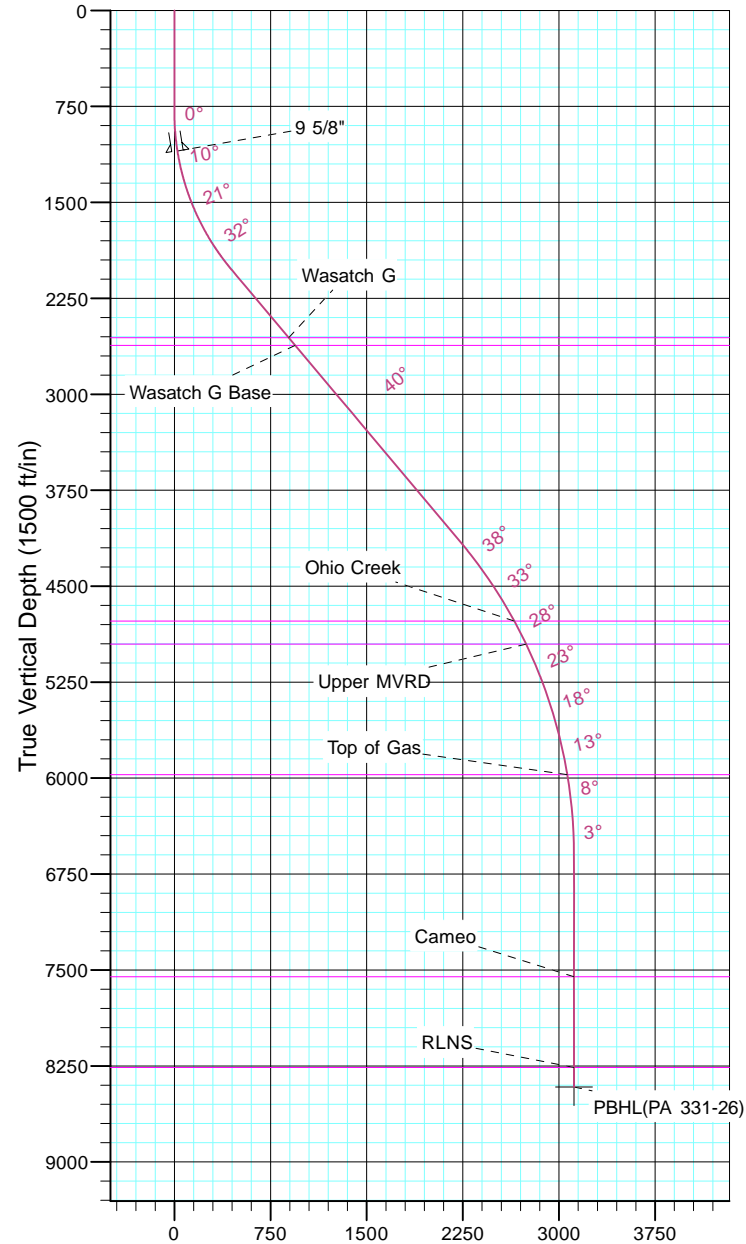
# TEP Rocky Mountain LLC

Project: Garfield County, CO NAD83  
Site: PA 23-26 Pad  
Well: PA 331-26  
Wellbore: OH  
Design: Plan #1



Azimuths to True North  
Magnetic North: 9.70°

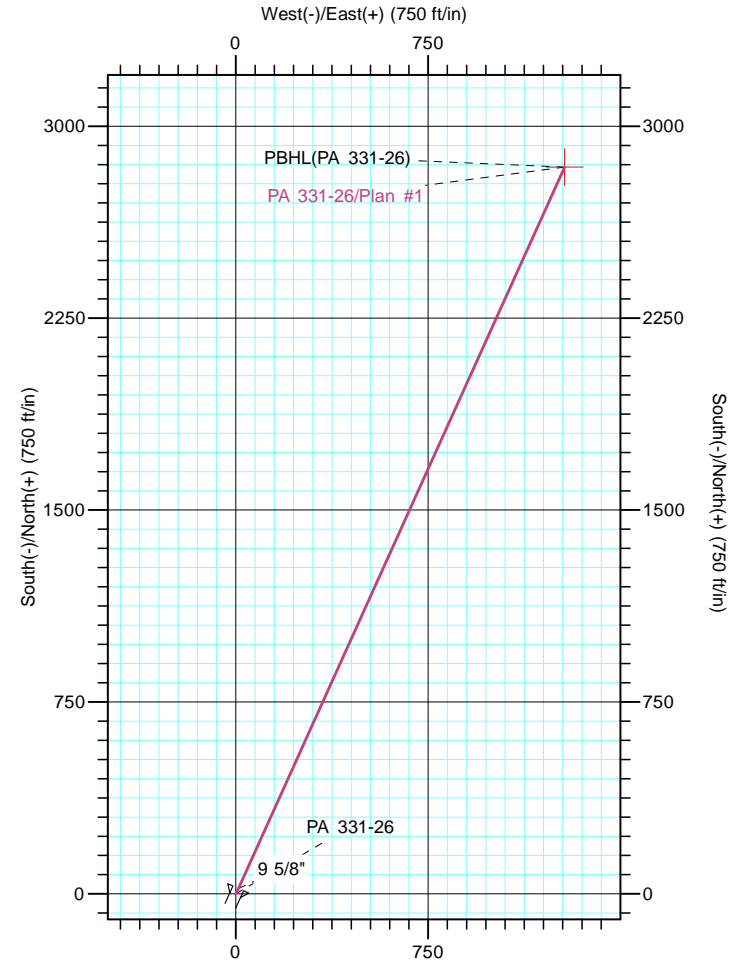
Magnetic Field  
Strength: 51543.2snT  
Dip Angle: 65.59°  
Date: 5/19/2017  
Model: IGRF2015



Vertical Section at 24.30° (1500 ft/in)

CASING DETAILS			
TVD	MD	Name	Size
1098.8	1100.0	9 5/8"	9.625

FORMATION TOP DETAILS			
TVDPATH	MDPATH	FORMATION	
2558.0	2825.7	Wasatch G	
2618.0	2904.0	Wasatch G Base	
4773.0	5658.6	Ohio Creek	
4953.0	5860.8	Upper MVRD	
5973.0	6933.8	Top of Gas	
7553.0	8516.6	Cameo	
8263.0	9226.6	RLNS	



DESIGN TARGET DETAILS							
Name	TVD	+N/-S	+E/-W	Northing	Easting	Latitude	Longitude
PBHL(PA 331-26)	8416.0	2840.7	1282.5	1617194.90	2305317.90	39° 30' 7.643 N	107° 57' 43.897 W

SECTION DETAILS										
Sec	MD	Inc	Azi	TVD	+N/-S	+E/-W	Dleg	TFace	Vsect	Target
1	0.0	0.00	0.00	0.0	0.0	0.0	0.00	0.00	0.0	
2	800.0	0.00	0.00	800.0	0.0	0.0	0.00	0.00	0.0	
3	2133.3	40.00	24.30	2027.6	407.2	183.8	3.00	24.30	446.8	
4	4897.0	40.00	24.30	4144.8	2026.3	914.8	0.00	0.00	2223.2	
5	7563.6	0.00	0.00	6600.0	2840.7	1282.5	1.50	180.00	3116.8	
6	9379.6	0.00	0.00	8416.0	2840.7	1282.5	0.00	0.00	3116.8	PBHL(PA 331-26)