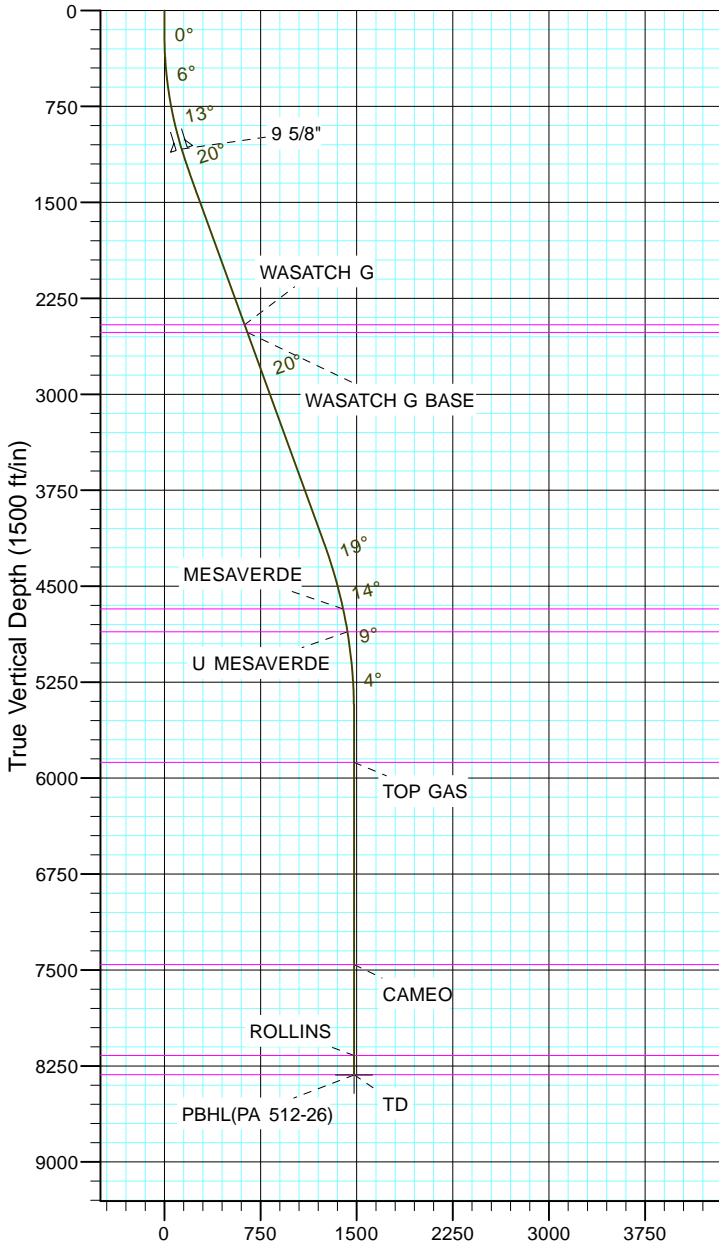


TEP Rocky Mountain LLC
Project: Garfield County, CO NAD83
Site: PA 23-26 Pad
Well: PA 512-26
Wellbore: OH
Design: Plan #1



Azimuths to True North
Magnetic North: 11.44°

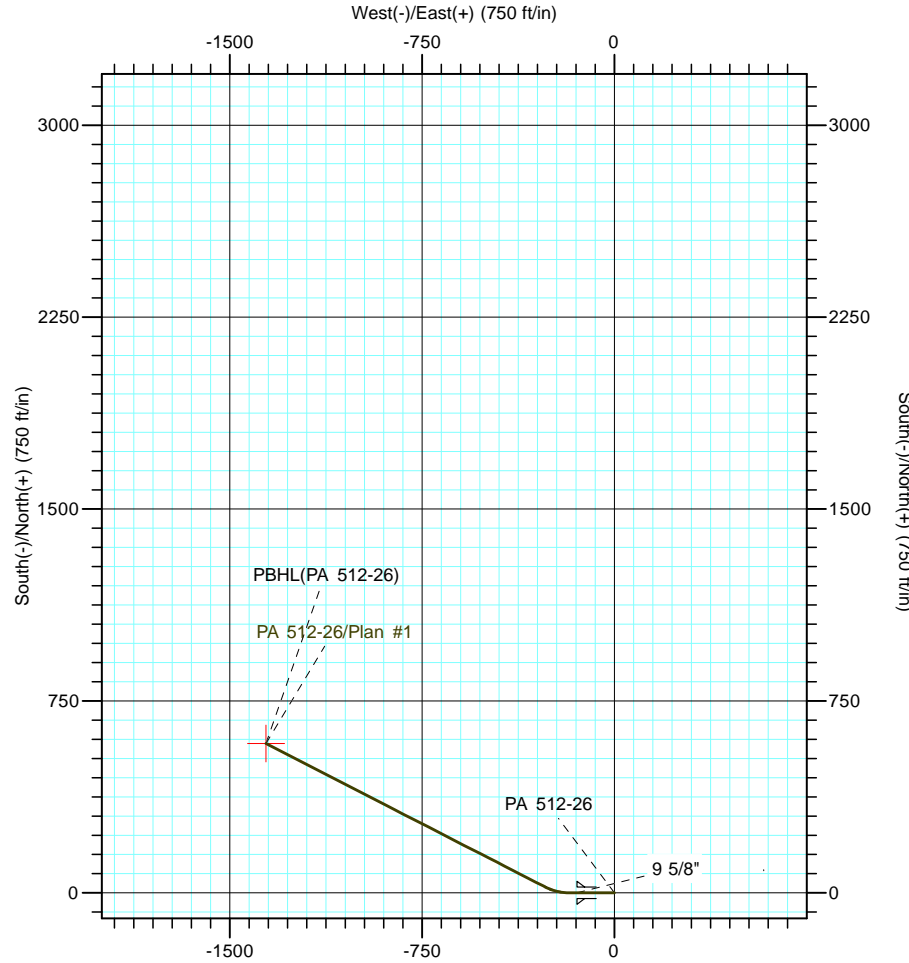
Magnetic Field
Strength: 53054.0snT
Dip Angle: 65.99°
Date: 12/31/2004
Model: IGRF2000



Vertical Section at 293.24° (1500 ft/in)

CASING DETAILS			
TVD	MD	Name	Size
1084.3	1100.0	9 5/8"	9.625

FORMATION TOP DETAILS			
TVDPath	MDPath	Formation	
2458.0	2560.9	WASATCH G	
2518.0	2624.7	WASATCH G BASE	
4678.0	4911.9	MESAVERDE	
4858.0	5095.1	U MESAVERDE	
5878.0	6117.9	TOP GAS	
7458.0	7697.9	CAMEO	
8168.0	8407.9	ROLLINS	
8318.0	8557.9	TD	



DESIGN TARGET DETAILS						
Name	TVD	+N/-S	+E/-W	Northing	Easting	Latitude
PBHL(PA 512-26)	8321.0	583.5	-1358.9	1615008.90	2302525.50	39° 29' 45.296 N

		Longitude			
		107° 58' 18.751 W			

SECTION DETAILS										
Sec	MD	Inc	Azi	TVD	+N/-S	+E/-W	Dleg	TFace	VSect	Target
1	0.0	0.00	0.00	0.0	0.0	0.0	0.00	0.00	0.0	
2	180.0	0.00	0.00	180.0	0.0	0.0	0.00	0.00	0.0	
3	1180.0	20.00	270.00	1159.8	0.0	-172.8	2.00	270.00	158.8	
4	1488.0	20.00	297.24	1449.9	24.2	-272.5	3.00	102.80	259.9	
5	4386.3	20.00	297.24	4173.3	478.0	-1154.0	0.00	0.00	1249.0	
6	5719.9	0.00	0.00	5480.0	583.5	-1358.9	1.50	180.00	1478.9	
7	8560.9	0.00	0.00	8321.0	583.5	-1358.9	0.00	0.00	1478.9	PBHL(PA 512-26)