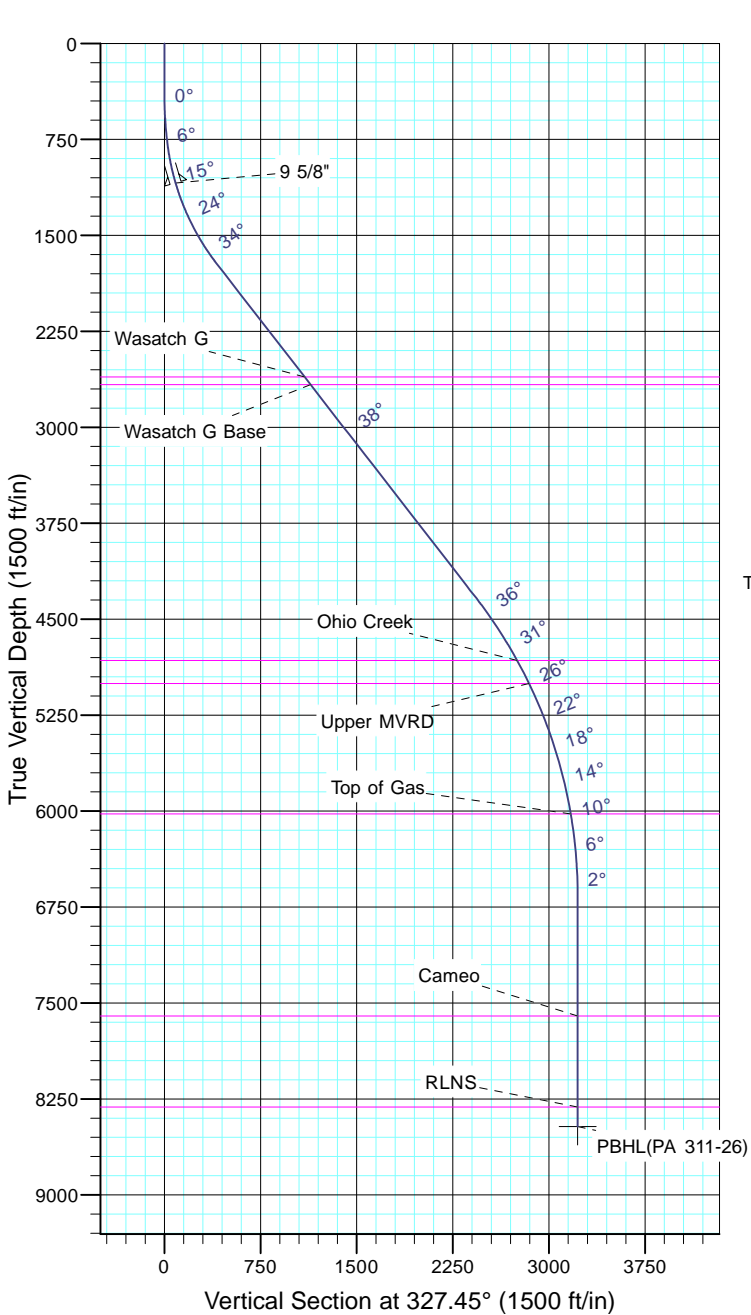


TEP Rocky Mountain LLC  
Project: Garfield County, CO NAD83  
Site: PA 23-26 Pad  
Well: PA 311-26  
Wellbore: OH  
Design: Plan #1



Azimuths to True North  
Magnetic North: 11.44°  
  
Magnetic Field  
Strength: 53054.0snT  
Dip Angle: 65.99°  
Date: 12/31/2004  
Model: IGRF2000

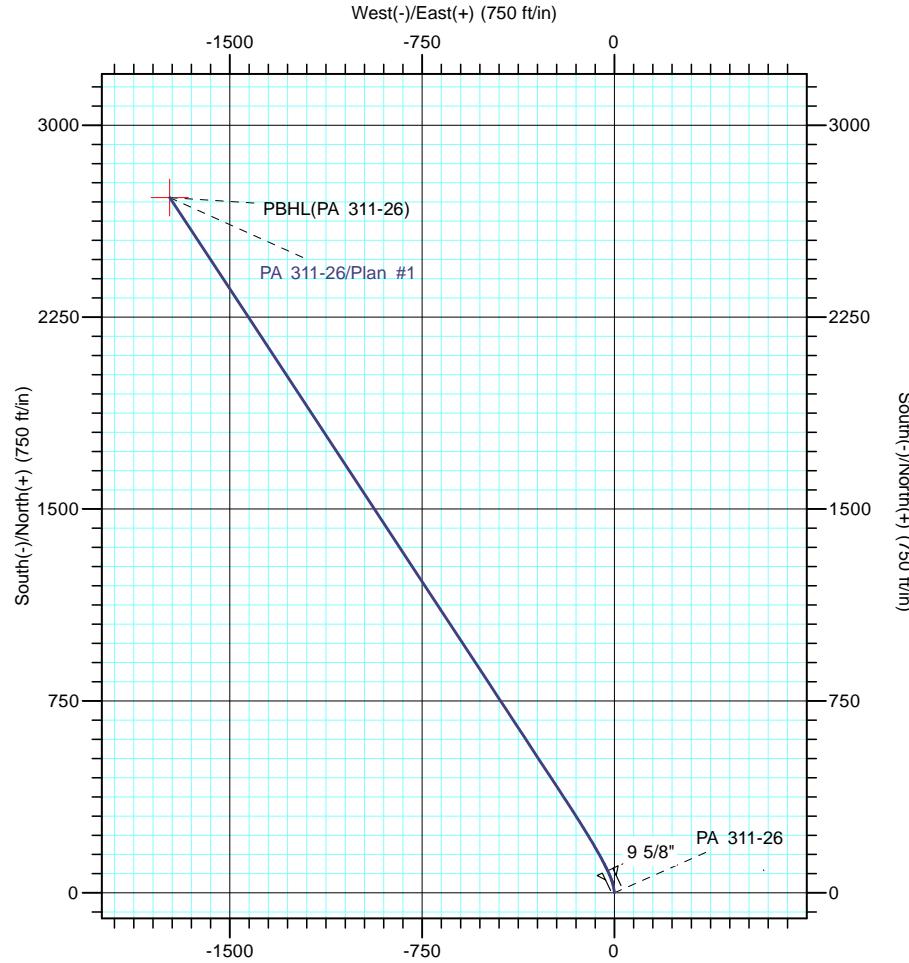


CASING DETAILS

TVD	MD	Name	Size
1091.7	1100.0	9 5/8"	9.625

FORMATION TOP DETAILS

TVDPath	MDPath	Formation
2608.0	2932.2	Wasatch G
2668.0	3008.1	Wasatch G Base
4823.0	5700.7	Ohio Creek
5003.0	5903.3	Upper MVRD
6023.0	6977.5	Top of Gas
7603.0	8560.5	Cameo
8313.0	9270.5	RLNS



DESIGN TARGET DETAILS

Name	TVD	+N/-S	+E/-W	Northing	Easting	Latitude	Longitude
PBHL(PA 311-26)	8466.0	2717.7	-1734.5	1617152.90	2302230.50	39° 30' 6.399 N	107° 58' 23.257 W

SECTION DETAILS

Sec	MD	Inc	Azi	TVD	+N/-S	+E/-W	Dleg	TFace	VSect	Target
1	0.0	0.00	0.00	0.0	0.0	0.0	0.00	0.00	0.0	
2	400.0	0.00	0.00	400.0	0.0	0.0	0.00	0.00	0.0	
3	800.0	8.00	350.00	798.7	27.5	-4.8	2.00	350.00	25.7	
4	1818.8	37.78	326.75	1728.0	366.3	-192.7	3.00	-28.40	412.5	
5	5102.2	37.78	326.75	4323.2	2048.3	-1295.5	0.00	0.00	2423.6	
6	7620.5	0.00	0.00	6663.0	2717.7	-1734.5	1.50	180.00	3224.1	
7	9423.5	0.00	0.00	8466.0	2717.7	-1734.5	0.00	0.00	3224.1	PBHL(PA 311-26)