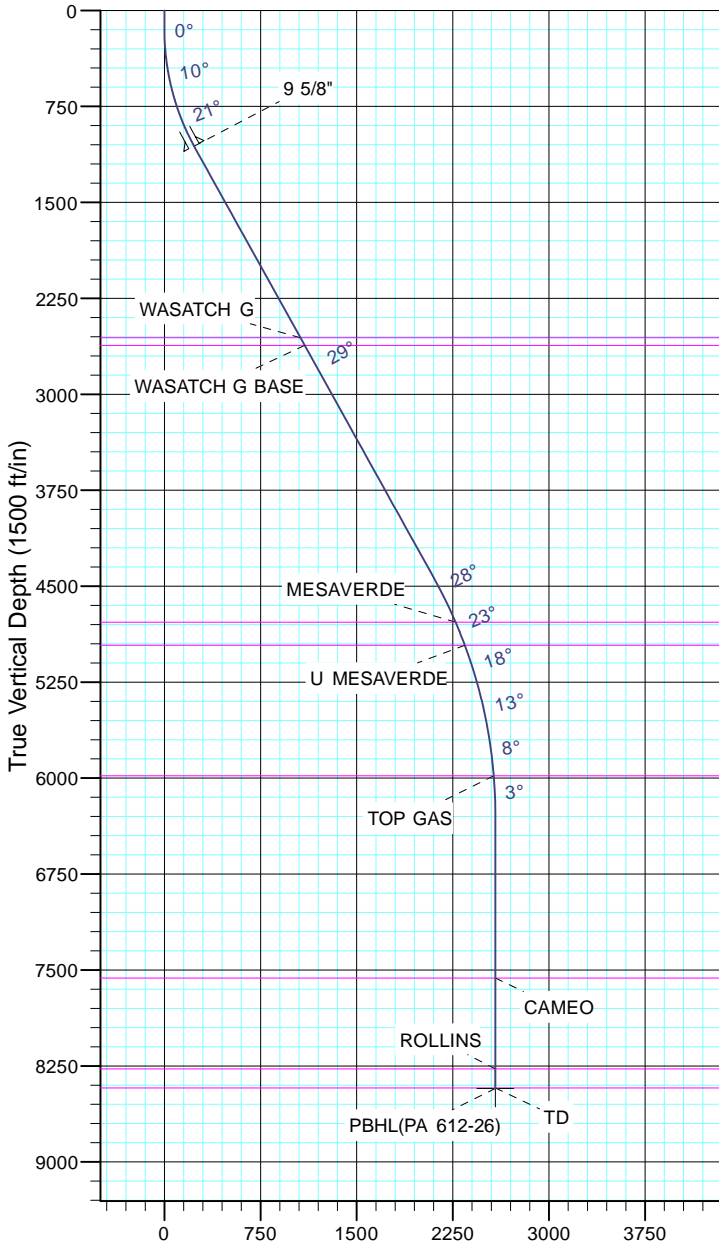


TEP Rocky Mountain LLC  
Project: Garfield County, CO NAD83  
Site: PA 23-26 Pad  
Well: PA 612-26  
Wellbore: OH  
Design: Plan #1



Azimuths to True North  
Magnetic North: 11.44°  
  
Magnetic Field  
Strength: 53054.0snT  
Dip Angle: 65.99°  
Date: 12/31/2004  
Model: IGRF2000



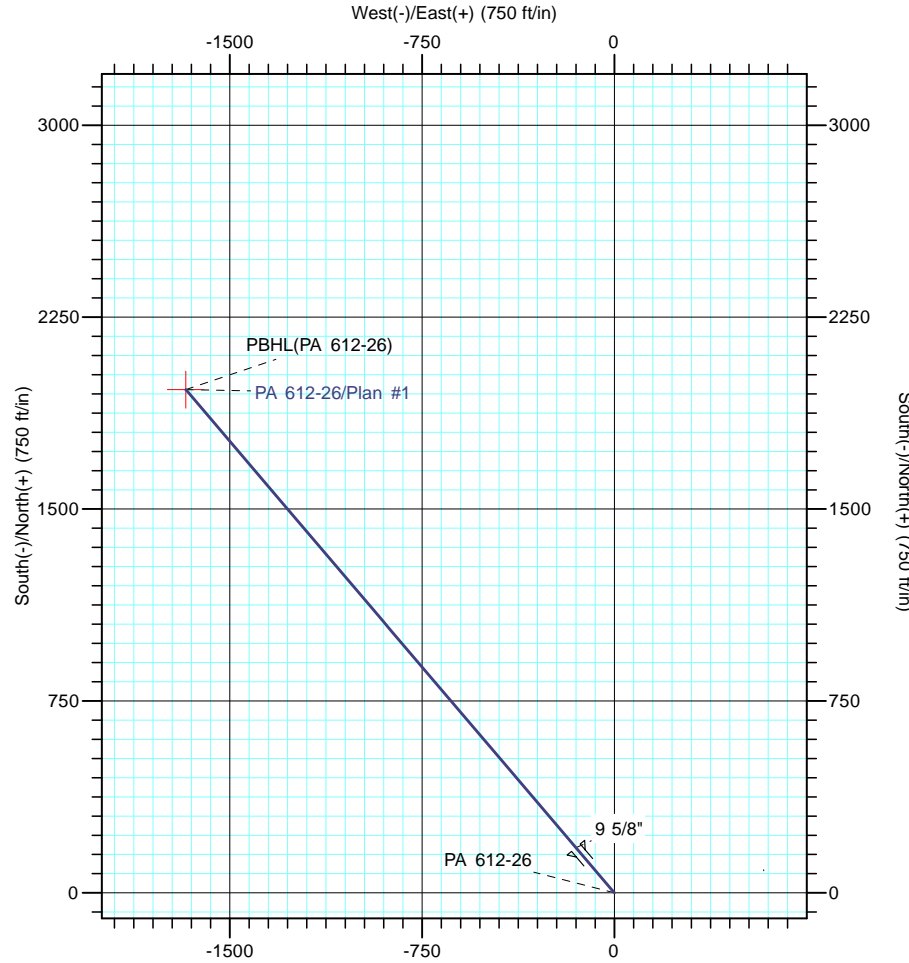
Vertical Section at 319.64° (1500 ft/in)

CASING DETAILS

TVD	MD	Name	Size
1061.3	1100.0	9 5/8"	9.625

FORMATION TOP DETAILS

TVDPath	MDPath	Formation
2558.0	2811.2	WASATCH G
2618.0	2879.8	WASATCH G BASE
4783.0	5345.1	MESAVERDE
4963.0	5538.9	U MESAVERDE
5983.0	6586.8	TOP GAS
7563.0	8167.1	CAMEO
8273.0	8877.1	ROLLINS
8423.0	9027.1	TD



DESIGN TARGET DETAILS

Name	TVD	+N/-S	+E/-W	Northing	Easting	Latitude	Longitude
PBHL(PA 612-26)	8426.0	1967.0	-1672.0	1616410.50	2302257.50	39° 29' 59.072 N	107° 58' 22.655 W

SECTION DETAILS

Sec	MD	Inc	Azi	TVD	+N/-S	+E/-W	Dleg	TFace	VSect	Target
1	0.0	0.00	0.00	0.0	0.0	0.0	0.00	0.00	0.0	
2	150.0	0.00	0.00	150.0	0.0	0.0	0.00	0.00	0.0	
3	1116.7	29.00	319.64	1075.9	182.5	-155.1	3.00	319.64	239.5	
4	4959.8	29.00	319.64	4437.1	1602.1	-1361.8	0.00	0.00	2102.6	
5	6893.1	0.00	0.00	6289.0	1967.0	-1672.0	1.50	180.00	2581.6	
6	9030.1	0.00	0.00	8426.0	1967.0	-1672.0	0.00	0.00	2581.6	PBHL(PA 612-26)