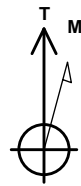


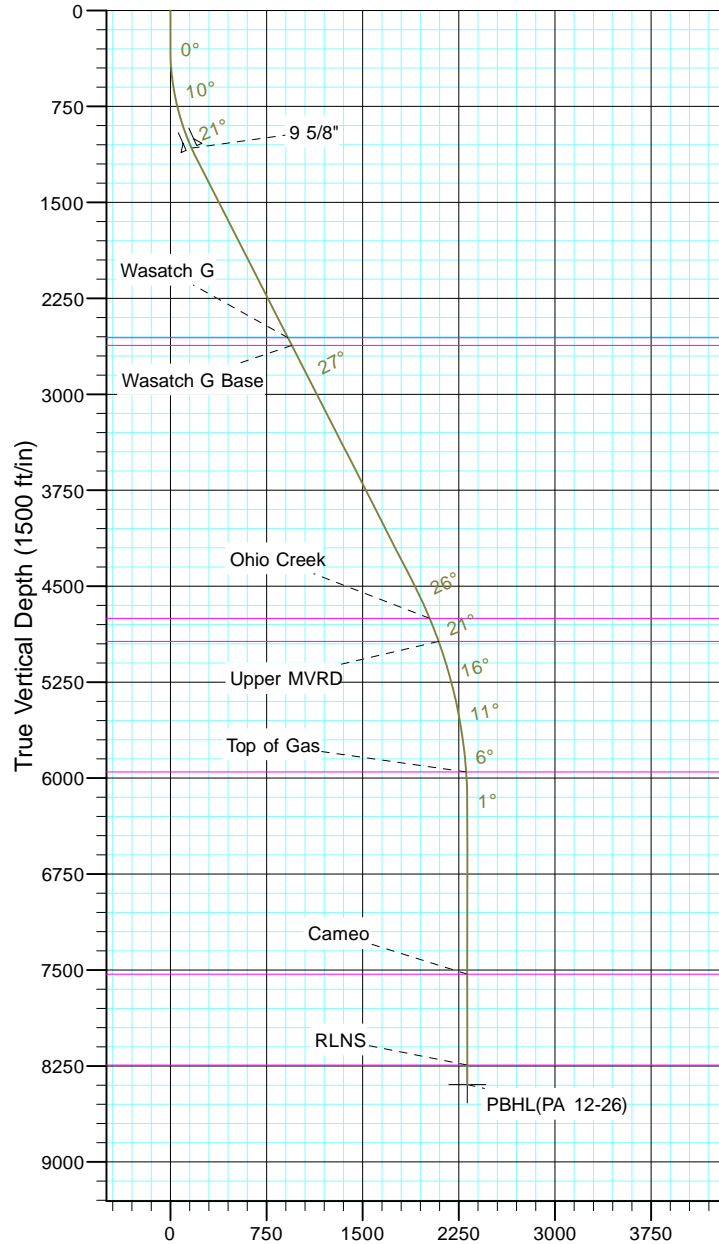
# TEP Rocky Mountain LLC

Project: Garfield County, CO NAD83  
 Site: PA 23-26 Pad  
 Well: PA 12-26  
 Wellbore: OH  
 Design: Plan #1



Azimuths to True North  
 Magnetic North: 9.70°

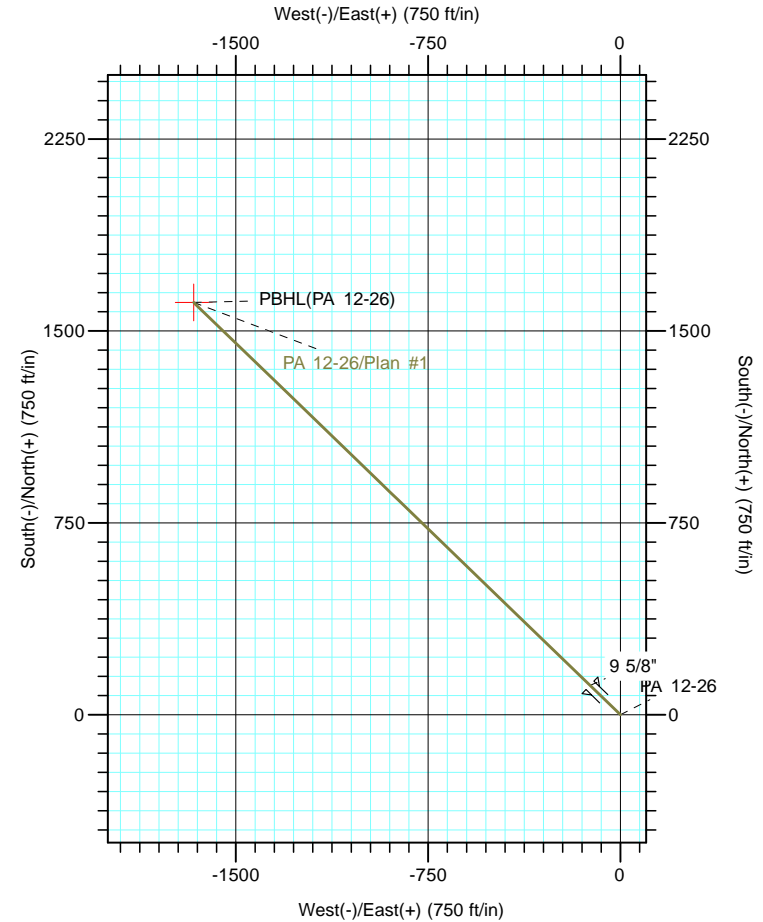
Magnetic Field  
 Strength: 51543.2snT  
 Dip Angle: 65.59°  
 Date: 5/19/2017  
 Model: IGRF2015



Vertical Section at 314.07° (1500 ft/in)

CASING DETAILS			
TVD	MD	Name	Size
1076.8	1100.0	9 5/8"	9.625

FORMATION TOP DETAILS		
TVDPath	MDPath	Formation
2558.0	2761.1	Wasatch G
2618.0	2828.5	Wasatch G Base
4753.0	5219.3	Ohio Creek
4933.0	5412.3	Upper MVRD
5953.0	6457.9	Top of Gas
7533.0	8038.1	Cameo
8243.0	8748.1	RLNS



DESIGN TARGET DETAILS						
Name	TVD	+N/-S	+E/-W	Northing	Easting	Latitude
PBHL(PA 12-26)	8396.0	1611.4	-1664.4	1616055.20	2302277.90	39° 29' 55.567 N

SECTION DETAILS										
Sec	MD	Inc	Azi	TVD	+N/-S	+E/-W	Dleg	TFace	VSect	Target
1	0.0	0.00	0.00	0.0	0.0	0.0	0.00	0.00	0.0	
2	300.0	0.00	0.00	300.0	0.0	0.0	0.00	0.00	0.0	
3	1200.1	27.00	314.07	1167.1	144.8	-149.6	3.00	314.07	208.2	
4	4927.0	27.00	314.07	4487.8	1321.8	-1365.2	0.00	0.00	1900.3	
5	6727.1	0.00	0.00	6222.0	1611.4	-1664.4	1.50	180.00	2316.7	
6	8901.1	0.00	0.00	8396.0	1611.4	-1664.4	0.00	0.00	2316.7	PBHL(PA 12-26)