

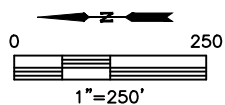
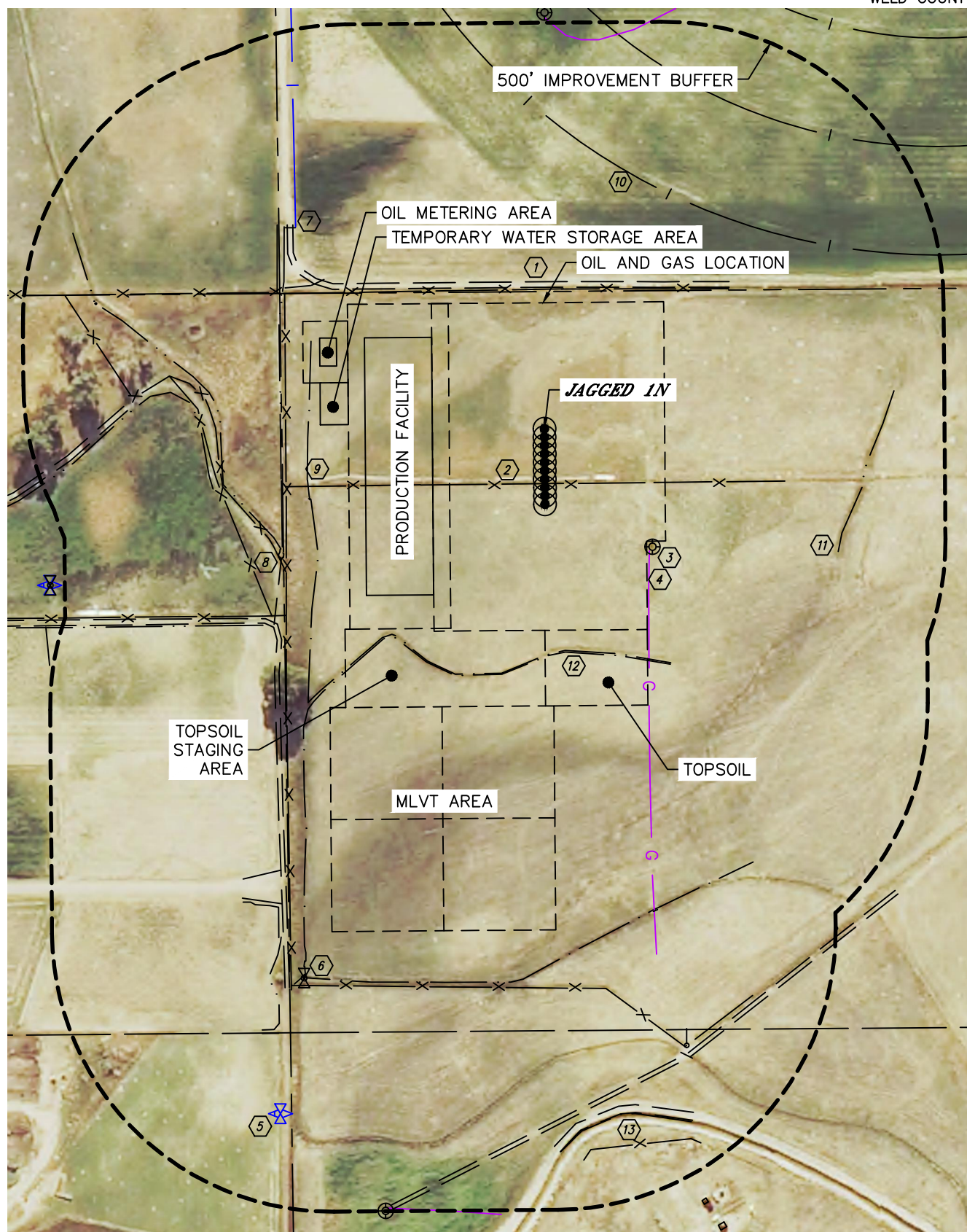


Lat40°, Inc. 6250 W. 10th Street, Unit 2, Greeley, CO 970-515-5294

# LOCATION DRAWING

JAGGED 4N64W08 1-10 PAD

SECTION: 8  
TOWNSHIP: 4N  
RANGE: 64W  
6TH. P.M.  
WELD COUNTY, CO





Lat40°, Inc. 6250 W. 10th Street, Unit 2, Greeley, CO 970-515-5294

# LOCATION DRAWING

JAGGED 4N64W08 1-10 PAD

SECTION: 8  
TOWNSHIP: 4N  
RANGE: 64W  
6TH. P.M.  
WELD COUNTY, CO

IMPROVEMENTS:  
(MEASURED FROM THE PROPOSED JAGGED 1N WELL LOCATION)

- BUI NO BUILDING UNITS WITHIN 500' IMPROVEMENT BUFFER
- B1 NO BUILDINGS WITHIN 500' IMPROVEMENT BUFFER
- 1 ROAD/EDGE OF GRAVEL 253' E, 591' & 918' NW, 746' N, 1036' & 1217' SW
- 2 FENCE 98' & 998' W, 250' E, 462' N, 528' & 577' NW, 536' NE, 1289' SW
- 3 EXISTING WELL HEAD 286' SW, 743' E, 1425' NW
- 4 GAS LINE LOCATES ±288' SW, ±698' SE, ±1405' NW (NOBLE)
- 5 AIR VALVE 1311' NW
- 6 IRRIGATION VALVE 1071' NW
- 7 IRRIGATION LINE LOCATES ±572' NE
- 8 CONCRETE STRUCTURE 516' NW
- 9 PIPE 433', 524', 1043' & 1065' NW, 475' & 571' NE, 882' & 1140' SW
- 10 IRRIGATION PIVOT TRACK 475' & 668' SE
- 11 LOW AREA 563' SW
- 12 DITCH 398', 859' SW, 437', 517', 602', 613' & 977' NW, 471' N, 490' NE
- 13 NERES CANAL 1232' SW