

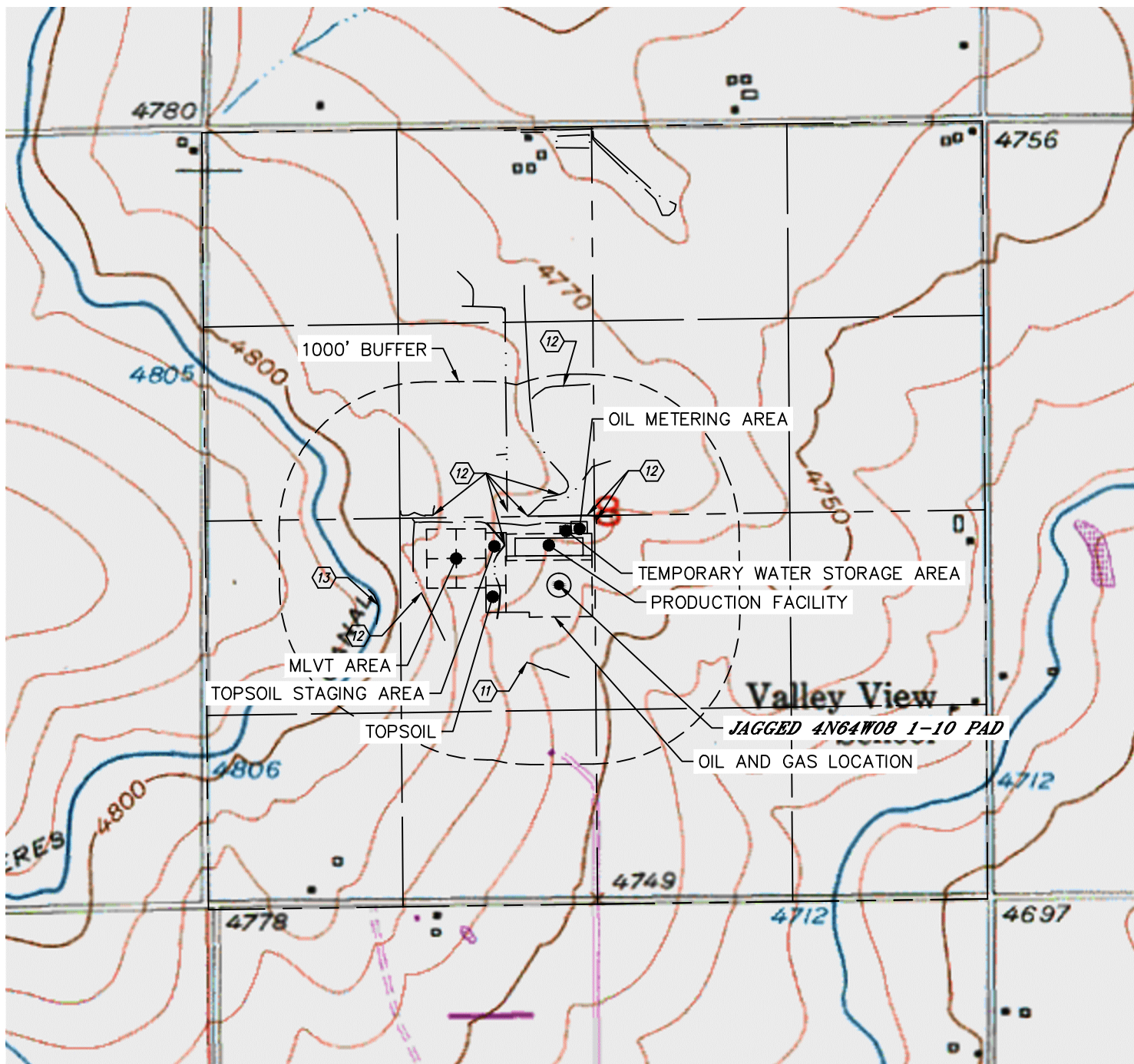


Lat40°, Inc. 6250 W. 10th Street, Unit 2, Greeley, CO 970-515-5294

HYDROLOGY MAP

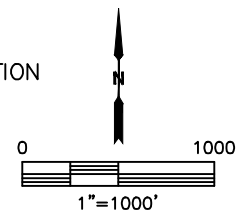
JAGGED 4N64W08 1-10 PAD

SECTION: 8
TOWNSHIP: 4N
RANGE: 64W
6TH. P.M.
WELD COUNTY, CO



DISTANCES MEASURED FROM THE EDGE OF THE OIL AND GAS LOCATION.

- (11) LOW AREA 309' S
- (12) DITCH 43', 95', 122', 147', 199' & 923' N, 50' SW, 63' E, (1) INSIDE LOCATION
- (13) NERES CANAL 350' SW



NEAREST DOWN GRADIENT SURFACE WATER: LOW AREA 309' S

DATE: 6/14/2017
PROJECT#: 2016123