



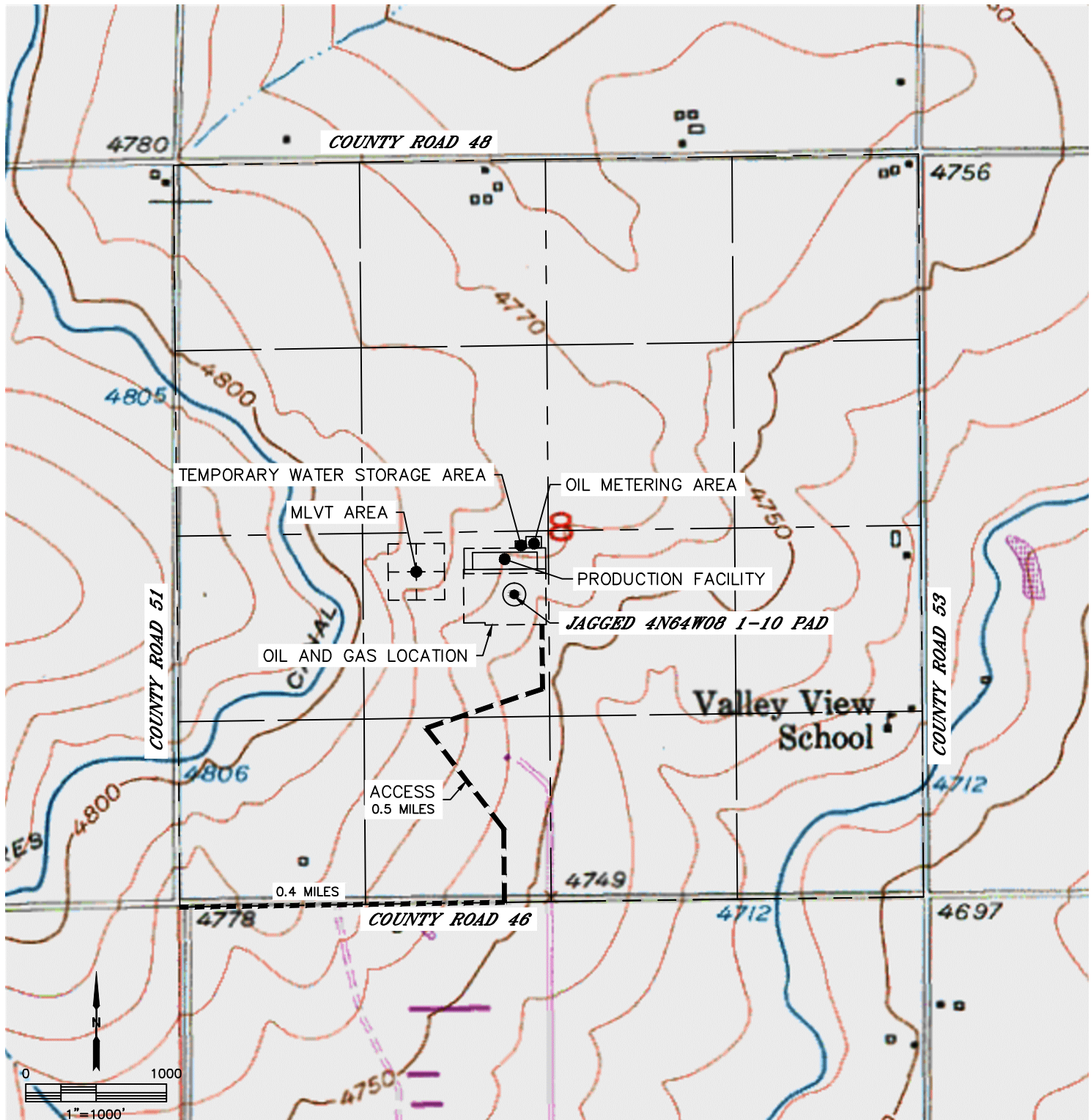
Lat40°, Inc. 6250 W. 10th Street, Unit 2, Greeley, CO 970-515-5294

ACCESS ROAD MAP

JAGGED 4N64W08 1-10 PAD

SECTION: 8
TOWNSHIP: 4N
RANGE: 64W
6TH. P.M.
WELD COUNTY, CO

DRIVING DIRECTIONS TO JAGGED 4N64W08 1-10 PAD
FROM THE INTERSECTION OF COUNTY ROAD 46 AND COUNTY ROAD 51 GO EAST ON COUNTY ROAD 46 FOR 0.4 MILES TO A PROPOSED ACCESS TO THE NORTH. THENCE NORTH, NORTHWEST, NORTHEAST AND THEN NORTH ALONG AN EXISTING FENCE LINE FOR 0.5 MILES TO THE PROPOSED WELL PAD AND PRODUCTION FACILITY.





Lat40°, Inc. 6250 W. 10th Street, Unit 2, Greeley, CO 970-515-5294

ACCESS ROAD MAP

JAGGED 4N64W08 1-10 PAD

SECTION: 8
TOWNSHIP: 4N
RANGE: 64W
6TH. P.M.
WELD COUNTY, CO

