

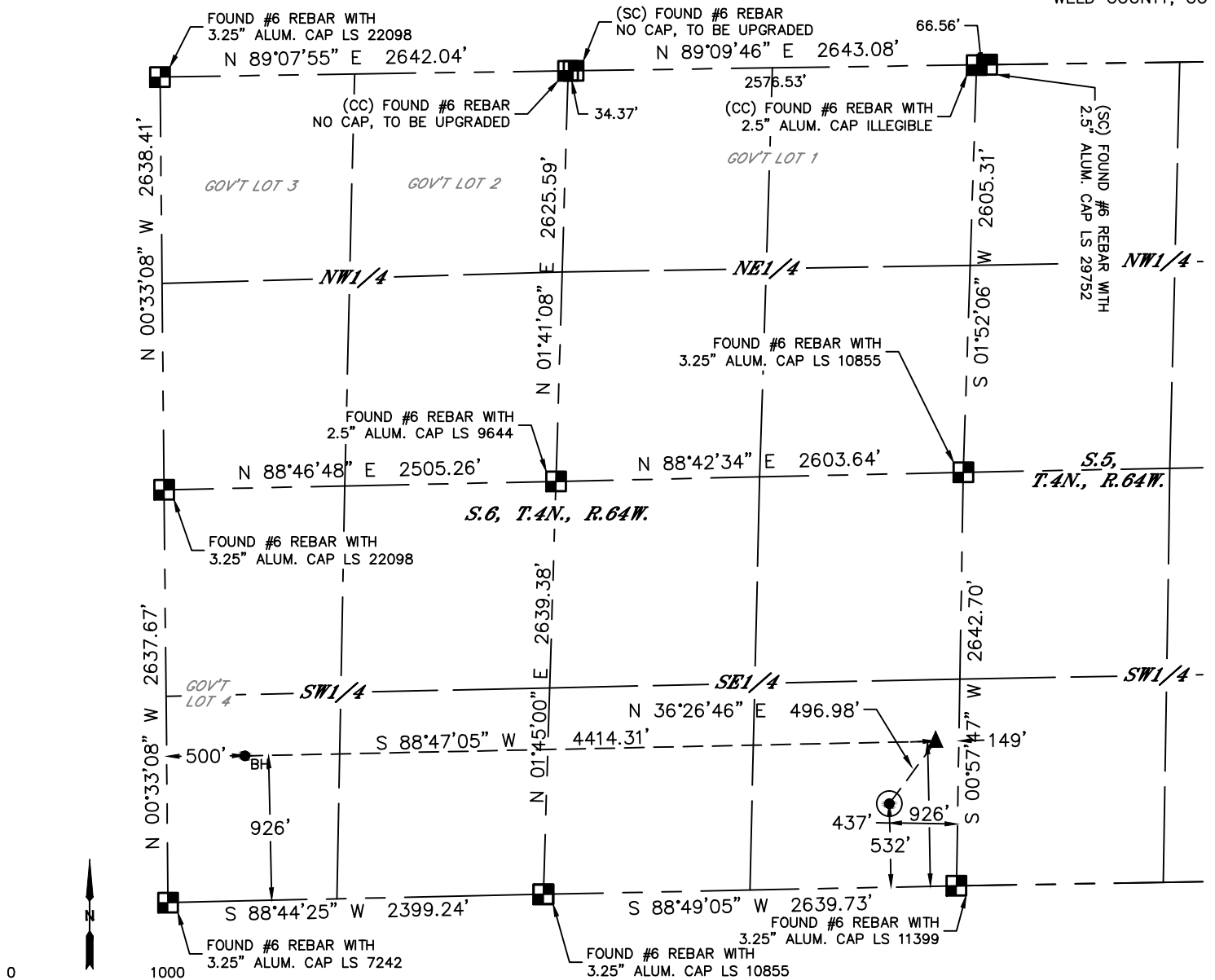


Lat40°, Inc. 6250 W. 10th Street, Unit 2, Greeley, CO 970-515-5294

WELL LOCATION CERTIFICATE

HAROLD 6X-234

SECTION: 6
TOWNSHIP: 4N
RANGE: 64W
6TH. P.M.
WELD COUNTY, CO



Distance to nearest spacing unit boundary line = 925'

CLIENT: PDC ENERGY						LANDMAN: JEFF HINDMARSH													
INSTRUMENT OPERATOR: JAKE STILLE						SURVEY DATE: 12/2/2016			SURFACE USE: PASTURE										
SHL FOOTAGE			SHL LAT °			SHL LONG °		SHL PDOP		SHL ELEV (FT.)		SHL 1/4/1/4		SHL S-T-R					
532		FSL		437		FEL		40.33554		-104.58549		1.6		4787		SESE		6-4N-64W	

BHL FOOTAGE				BHL LAT °	BHL LONG °	BHL S-T-R	EP LAT °	EP LONG °	EP S-T-R
926	FSL	500	FWL	40.33649	-104.60025	6-4N-64W	40.33662	-104.58442	6-4N-64W

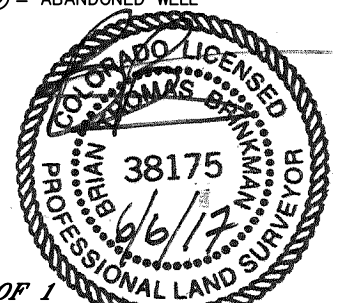
NOTE:

- 1) Bearings shown are Grid Bearings of the Colorado State Plane Coordinate System, North Zone, North American Datum 1983. The lineal dimensions as contained herein are based upon the "U.S. Survey Foot."
- 2) Distances to section lines measured at 90 degrees from said section lines.
- 3) Ground elevations are based on an observed GPS elevation (NAVD 1988 DATUM).
- 4) Latitude and Longitude shown are (NAD 83 DATUM).
- 5) IMPROVEMENTS: See LOCATION DRAWING for all visible improvements within 500' of oil and gas location.
- 6) This map does not represent a boundary survey.

LEGEND

- = ALIQUOT MONUMENT AS DESCRIBED
- = CALCULATED POSITION
- = SURFACE HOLE LOCATION (SHL)
- ▲ = ENTRY POINT LOCATION (EP)
- BH = BOTTOM HOLE LOCATION (BHL)
- ⊙ = EXISTING WELL
- ⊙ = ABANDONED WELL

NEAREST CULTURAL ITEMS	
BUILDING	±777' NE
BUILDING UNIT	±777' NE
HIGH OCCUPANCY BUILDING UNIT	5280+
DESIGNATED OUTSIDE ACTIVITY AREA	5280+
PUBLIC ROAD (CR 51)	±439' E
ABOVE GROUND UTILITY	±463' E
RAILROAD	5280+
PROPERTY LINE	±466' E



SHEET 1 OF 1

Brian T. Brinkman—On behalf of Lat40°, Inc.
Colorado Licensed Professional Land Surveyor No. 38175
DATE: 06/06/2017
PROJECT#: 2016098