

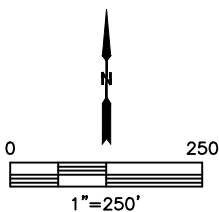
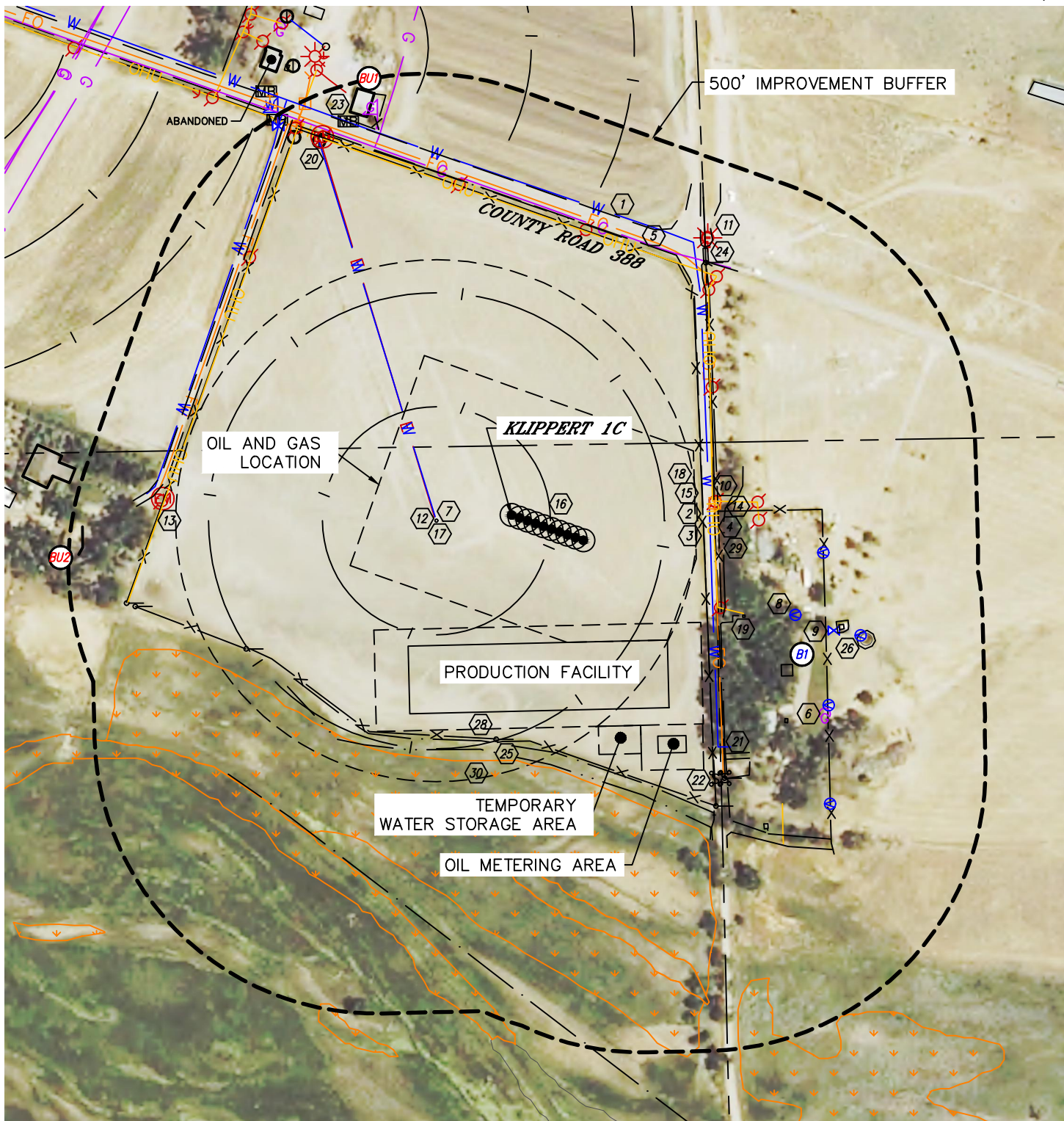


Lat40°, Inc. 6250 W. 10th Street, Unit 2, Greeley, CO 970-515-5294

LOCATION DRAWING

KLIPPERT 5N63W19 1-10 PAD

SECTION: 19
TOWNSHIP: 5N
RANGE: 63W
6TH. P.M.
WELD COUNTY, CO





LOCATION DRAWING
KLIPPERT 5N63W19 1-10 PAD

SECTION: 19
TOWNSHIP: 5N
RANGE: 63W
6TH. P.M.
WELD COUNTY, CO

IMPROVEMENTS:
(MEASURED FROM THE PROPOSED KLIPPERT 1C WELL LOCATION)

- ① BUILDING UNIT BU1 751' NW, BU2 762' W
- ② BUILDING B1 547' SE
- ③ COUNTY ROAD 388 531' NE
- ④ ROAD 340' E, 567' SE, 598' NW, 566', 568' & 604' NE
- ⑤ FENCE 340' & (2) 366' E, 398' S, 520' NE, 590' & 725' NW, 602', 606' & 636' SE
- ⑥ OVERHEAD UTILITY LINE 357' & 363' E, 518' NE, 589' NW, 702' SE
- ⑦ GAS LINE LOCATES (DCP) ±534' NE, ±696' NW
- ⑧ GAS SERVICE 658' SE
- ⑨ WATER LINE LOCATES ±136' W, ±351' E, ±551' SE, ±564' NE, ±613' NW
- ⑩ SPIGOT 534', 557', 655', 656' & 762' SE
- ⑪ WATER VALVE 607' SE, 804' NW
- ⑫ FIBER OPTIC LOCATE ±360' E, ±541' NE, ±604', ±787' & ±788' NW
- ⑬ ELECTRIC SERVICE (2) 601' NE
- ⑭ ELECTRIC LINE LOCATES ±137' W, ±805' NW
- ⑮ ELECTRIC METER 619' W, 750' NW
- ⑯ POWER/LIGHT POLE 362', 437' & 438' E, 405' SE, 523', 531', 558' & 602' NE, 593', 621', 662', 749' & 786' NW
- ⑰ TELEPHONE PEDESTAL 316' E, 816' NW
- ⑱ IRRIGATION PIVOT TRACK 69' & 271' E, 603' NE, 658' N, 753' & 767' NW
- ⑲ IRRIGATION CENTER PIVOT 134' W
- ⑳ IRRIGATION END GUN 329' E
- ㉑ IRRIGATION PUMP 447', 605', 613' & 707' SE
- ㉒ IRRIGATION WELL 746' & 773' NW
- ㉓ PIPE 555', 641', 671' & 718' SE
- ㉔ POST 591' & 601' SE
- ㉕ MAILBOX 758' & 815' NW
- ㉖ CATTLE GUARD 564' NE
- ㉗ GATE 398' S, 528' & 687' SW, 565' NE, 600' & 630' SE
- ㉘ WATER TANK WITH CONCRETE BASE 651' SE
- ㉙ ITEM HAS BEEN INTENTIONALLY REMOVED
- ㉚ DITCH 404' S, 419', 684' & 726' SE, 530' NE, 664' SW
- ㉛ BORROW DITCH 376' E
- ㉜ APPROXIMATE EDGE OF USFSW NATIONAL WETLANDS INVENTORY 435' S