

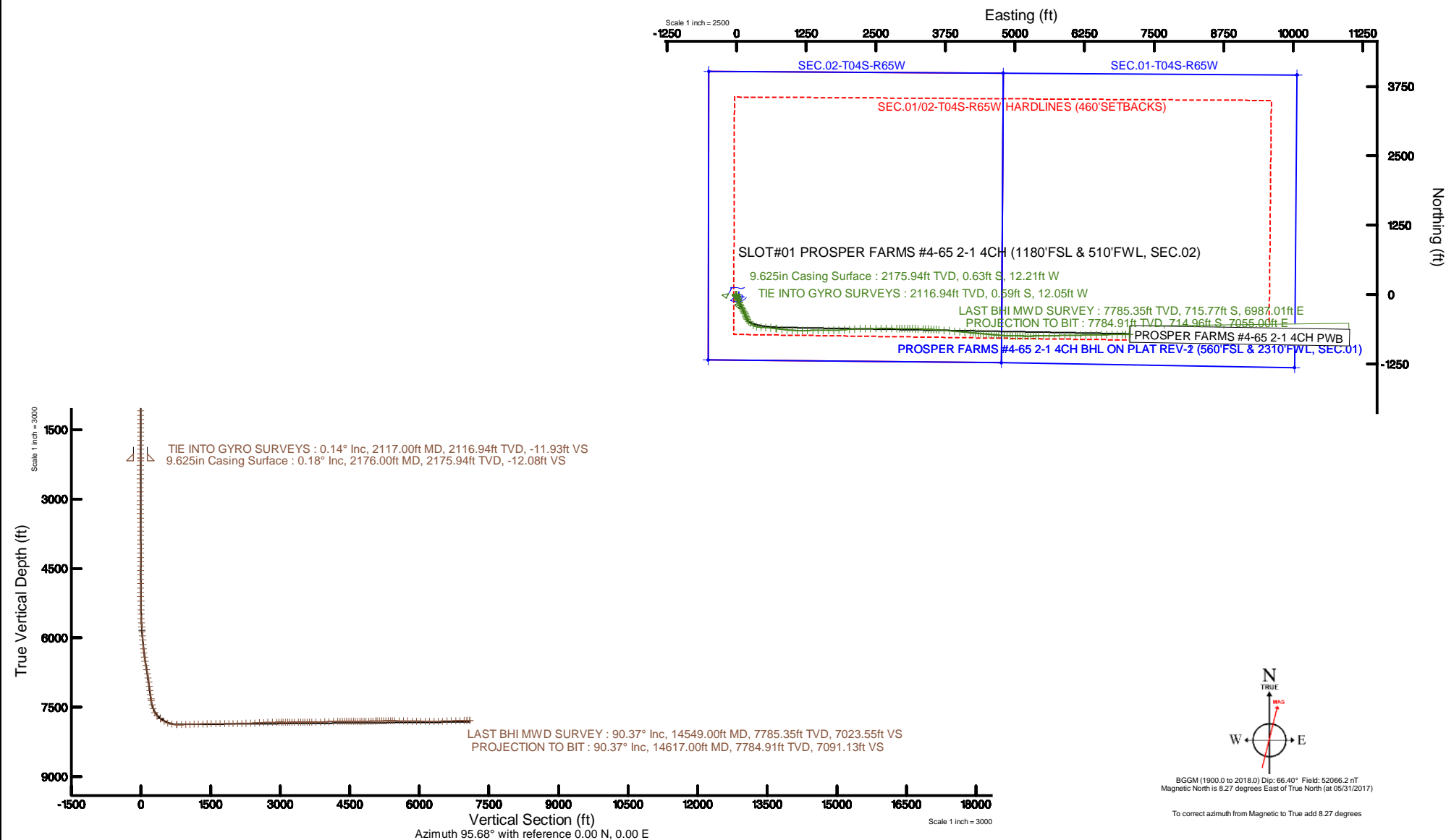
Location:	COLORADO	Slot:	SLOT#01 PROSPER FARMS #4-65 2-1 4CH (1180'FSL & 510'FWL, SEC.02)
Field:	ARAPAHOE COUNTY (NAD83/TN)	Well:	PROSPER FARMS #4-65 2-1 4CH
Facility:	SEC.02-T04S-R65W	Wellbore:	PROSPER FARMS #4-65 2-1 4CH PWB

Location:	COLORADO	Slot:	SLOT#01 PROSPER FARMS #4-65 2-1 4CH (1180'FSL & 510'FWL, SEC.02)
Field:	ARAPAHOE COUNTY (NAD83/TN)	Well:	PROSPER FARMS #4-65 2-1 4CH
Facility:	SEC.02-T04S-R65W	Wellbore:	PROSPER FARMS #4-65 2-1 4CH PWB

Plot reference wellpath is PROSPER FARMS #4-65-2-1 4CH (REV-C.0) PWP	Grid System: NAD83 / Lambert Colorado SP, Central Zone (502), US feet
True vertical depths are referenced to RIG (26.25KB) (RKB)	* = Wellpath was transformed from a different geoidic datum
Measured depths are referenced to RIG (26.25KB) (RKB)	North Reference: True north
RIG (26.25KB) (RKB) to Mean Sea Level: 5658.25 feet	Scale: True distance
Mean Sea Level to Mud line (At Slot: SLOTR01 PROSPER FARMS #4-65-2-1 4CH (1180FSL & 510FWL, SEC.02)): 0 feet	Depths are in feet
Coordinates are in feet referenced to Slot	Created by: bensajac on 2017-06-23
	Database: WA_DEN_Denver_Dein



**BAKER
HUGHES**
INTEQ



REFERENCE WELLPATH IDENTIFICATION			
Operator	Burlington Resources	Slot	SLOT#01 PROSPER FARMS #4-65 2-1 4CH (1180'FSL & 510'FWL, SEC.02)
Area	COLORADO	Well	PROSPER FARMS #4-65 2-1 4CH
Field	ARAPAHOE COUNTY (NAD83/TN)	Wellbore	PROSPER FARMS #4-65 2-1 4CH AWP
Facility	SEC.02-T04S-R65W		

REPORT SETUP INFORMATION			
Projection System	NAD83 / Lambert Colorado SP, Central Zone (502), US feet	Software System	WellArchitect® 5.0
North Reference	True	User	Bensjacj
Scale	0.999996	Report Generated	06/23/2017 at 1:28 PM
Convergence at slot	0.55° East	Database/Source file	WA_DEN_Denver_Defn/PROSPER_FARMS_#4-65_2-1_4CH_AWP.xml

WELLPATH LOCATION						
	Local coordinates		Grid coordinates		Geographic coordinates	
	North[ft]	East[ft]	Easting[US ft]	Northing[US ft]	Latitude	Longitude
Slot Location	40.47	-39.85	3242192.91	1691511.00	39°43'43.860"N	104°38'20.070"W
Facility Reference Pt			3242233.14	1691470.91	39°43'43.460"N	104°38'19.560"W
Field Reference Pt			3256721.09	1679994.75	39°41'48.650"N	104°35'15.610"W

WELLPATH DATUM			
Calculation method	Minimum curvature	RIG (26.25'KB) (RKB) to Facility Vertical Datum	5658.25ft
Horizontal Reference Pt	Slot	RIG (26.25'KB) (RKB) to Mean Sea Level	5658.25ft
Vertical Reference Pt	RIG (26.25'KB) (RKB)	RIG (26.25'KB) (RKB) to Mud Line at Slot (SLOT#01 PROSPER FARMS #4-65 2-1 4CH (1180'FSL & 510'FWL, SEC.02))	5658.25ft
MD Reference Pt	RIG (26.25'KB) (RKB)	Section Origin	N 0.00, E 0.00 ft
Field Vertical Reference	Mean Sea Level	Section Azimuth	95.68°

REFERENCE WELLPATH IDENTIFICATION

Operator	Burlington Resources	Slot	SLOT#01 PROSPER FARMS #4-65 2-1 4CH (1180'FSL & 510'FWL, SEC.02)
Area	COLORADO	Well	PROSPER FARMS #4-65 2-1 4CH
Field	ARAPAHOE COUNTY (NAD83/TN)	Wellbore	PROSPER FARMS #4-65 2-1 4CH AWB
Facility	SEC.02-T04S-R65W		

WELLPATH DATA (155 stations)

MD [ft]	Inclination [°]	Azimuth [°]	TVD [ft]	Vert Sect [ft]	North [ft]	East [ft]	DLS [°/100ft]	Comments
2117.00	0.140	250.090	2116.94	-11.93	-0.59	-12.05	0.07	TIE INTO GYRO SURVEYS
2278.00	0.260	264.290	2277.94	-12.46	-0.69	-12.59	0.08	
2373.00	0.250	280.030	2372.94	-12.88	-0.67	-13.01	0.07	
2467.00	0.230	274.150	2466.94	-13.28	-0.62	-13.40	0.03	
2561.00	0.190	263.110	2560.94	-13.62	-0.63	-13.75	0.06	
2656.00	0.210	242.040	2655.94	-13.91	-0.73	-14.06	0.08	
2750.00	0.290	259.490	2749.94	-14.29	-0.85	-14.44	0.12	
2845.00	0.330	271.450	2844.94	-14.79	-0.89	-14.95	0.08	
2939.00	0.340	274.960	2938.93	-15.34	-0.86	-15.50	0.02	
3034.00	0.750	152.780	3033.93	-15.28	-1.39	-15.50	1.03	
3128.00	0.960	143.410	3127.92	-14.42	-2.57	-14.75	0.27	
3222.00	0.770	147.440	3221.91	-13.50	-3.73	-13.94	0.21	
3317.00	0.880	147.800	3316.90	-12.66	-4.89	-13.20	0.12	
3412.00	0.640	148.560	3411.89	-11.89	-5.96	-12.54	0.25	
3506.00	0.850	146.670	3505.88	-11.13	-6.99	-11.88	0.22	
3601.00	0.750	153.680	3600.87	-10.36	-8.13	-11.22	0.15	
3695.00	0.530	146.270	3694.87	-9.76	-9.05	-10.71	0.25	
3789.00	0.530	134.800	3788.86	-9.14	-9.72	-10.16	0.11	
3884.00	0.620	137.470	3883.86	-8.42	-10.40	-9.50	0.10	
3978.00	0.500	152.320	3977.86	-7.81	-11.14	-8.96	0.20	
4072.00	0.570	167.310	4071.85	-7.44	-11.96	-8.67	0.17	
4167.00	0.590	178.020	4166.85	-7.23	-12.91	-8.55	0.12	
4261.00	0.680	171.800	4260.84	-7.03	-13.95	-8.45	0.12	
4355.00	0.840	202.420	4354.83	-7.09	-15.14	-8.63	0.46	
4450.00	1.020	215.080	4449.82	-7.71	-16.47	-9.39	0.29	
4544.00	0.930	206.230	4543.81	-8.39	-17.84	-10.20	0.19	
4639.00	0.770	184.650	4638.80	-8.65	-19.17	-10.60	0.37	
4733.00	0.770	133.300	4732.79	-8.14	-20.23	-10.19	0.71	
4827.00	0.610	135.760	4826.78	-7.25	-21.02	-9.38	0.17	
4921.00	0.570	128.100	4920.78	-6.47	-21.67	-8.66	0.09	
5016.00	0.590	124.520	5015.77	-5.65	-22.24	-7.89	0.04	
5110.00	0.630	108.760	5109.77	-4.72	-22.68	-7.00	0.18	
5204.00	0.740	94.810	5203.76	-3.61	-22.90	-5.91	0.21	
5299.00	0.860	91.010	5298.75	-2.29	-22.96	-4.58	0.14	
5393.00	2.190	157.630	5392.72	-0.74	-24.63	-3.19	2.14	
5488.00	3.640	147.750	5487.60	1.97	-28.86	-0.89	1.61	
5582.00	4.810	149.720	5581.34	6.12	-34.79	2.69	1.25	
5677.00	6.090	149.430	5675.91	11.44	-42.57	7.26	1.35	
5771.00	7.580	155.850	5769.24	17.47	-52.52	12.33	1.78	
5865.00	8.580	161.500	5862.31	23.43	-64.83	17.09	1.36	
5960.00	8.050	154.650	5956.31	29.76	-77.56	22.19	1.18	
6055.00	9.460	157.910	6050.20	36.83	-90.81	27.97	1.57	
6149.00	11.900	161.680	6142.57	44.37	-107.17	33.93	2.70	
6243.00	13.420	160.700	6234.28	52.92	-126.66	40.58	1.63	
6338.00	15.200	160.230	6326.33	62.93	-148.79	48.44	1.88	

REFERENCE WELLPATH IDENTIFICATION

Operator	Burlington Resources	Slot	SLOT#01 PROSPER FARMS #4-65 2-1 4CH (1180'FSL & 510'FWL, SEC.02)
Area	COLORADO	Well	PROSPER FARMS #4-65 2-1 4CH
Field	ARAPAHOE COUNTY (NAD83/TN)	Wellbore	PROSPER FARMS #4-65 2-1 4CH AWB
Facility	SEC.02-T04S-R65W		

WELLPATH DATA (155 stations)

MD [ft]	Inclination [°]	Azimuth [°]	TVD [ft]	Vert Sect [ft]	North [ft]	East [ft]	DLS [°/100ft]	Comments
6432.00	15.890	159.930	6416.89	73.81	-172.47	57.02	0.74	
6527.00	16.710	152.310	6508.08	86.98	-196.78	67.83	2.41	
6621.00	18.720	146.810	6597.62	103.88	-221.38	82.37	2.78	
6716.00	17.610	146.290	6687.89	122.57	-246.09	98.69	1.18	
6810.00	17.370	150.280	6777.55	139.72	-270.11	113.54	1.30	
6905.00	16.120	149.960	6868.51	155.64	-293.84	127.17	1.32	
6999.00	16.400	158.190	6958.77	169.39	-317.46	138.64	2.47	
7093.00	16.170	159.450	7049.00	181.30	-342.04	148.16	0.45	
7187.00	15.980	162.330	7139.32	192.21	-366.62	156.68	0.87	
7281.00	17.350	158.190	7229.37	203.81	-391.96	165.82	1.93	
7376.00	16.000	153.720	7320.38	217.28	-416.86	176.88	1.96	
7409.00	15.680	152.540	7352.13	222.13	-424.89	180.95	1.38	
7503.00	19.640	143.090	7441.70	239.77	-448.81	196.30	5.19	
7598.00	25.770	144.530	7529.30	264.19	-478.42	217.90	6.48	
7692.00	32.490	136.400	7611.39	296.82	-513.40	247.21	8.28	
7787.00	42.990	119.180	7686.62	346.14	-547.86	293.34	15.58	
7881.00	55.410	105.670	7748.08	414.08	-574.11	359.00	17.06	
7976.00	61.480	94.200	7797.90	494.58	-587.77	438.54	12.10	
8070.00	68.200	91.390	7837.84	579.49	-591.86	523.47	7.64	
8164.00	78.800	96.290	7864.52	669.42	-597.99	613.23	12.33	
8259.00	90.520	98.810	7873.35	763.78	-610.42	706.82	12.62	
8276.00	90.740	98.010	7873.16	780.76	-612.90	723.64	4.88	
8368.00	90.430	95.950	7872.22	872.73	-624.08	814.95	2.26	
8459.00	91.690	95.330	7870.54	963.71	-633.02	905.49	1.54	
8550.00	91.450	93.410	7868.04	1054.65	-639.95	996.18	2.13	
8641.00	91.720	91.610	7865.53	1145.47	-643.94	1087.06	2.00	
8736.00	91.970	89.780	7862.47	1240.06	-645.09	1182.00	1.94	
8828.00	92.130	89.140	7859.18	1331.46	-644.22	1273.93	0.72	
8921.00	91.690	89.350	7856.08	1423.82	-643.00	1366.87	0.52	
9014.00	90.980	89.240	7853.91	1516.22	-641.85	1459.84	0.77	
9108.00	90.400	89.460	7852.78	1609.63	-640.79	1553.83	0.66	
9205.00	90.120	89.550	7852.34	1706.07	-639.95	1650.82	0.30	
9299.00	90.090	89.320	7852.16	1799.51	-639.02	1744.82	0.25	
9394.00	89.660	87.140	7852.37	1893.70	-636.09	1839.77	2.34	
9488.00	90.740	86.310	7852.04	1986.55	-630.72	1933.61	1.45	
9583.00	90.550	85.480	7850.97	2080.17	-623.92	2028.36	0.90	
9678.00	91.170	86.800	7849.55	2173.84	-617.52	2123.13	1.53	
9772.00	91.910	88.470	7847.02	2266.87	-613.65	2217.01	1.94	
9866.00	92.340	91.340	7843.54	2360.32	-613.49	2310.94	3.09	
9961.00	92.340	88.230	7839.66	2454.73	-613.13	2405.85	3.27	
10056.00	93.020	88.400	7835.21	2548.84	-610.34	2500.70	0.74	
10150.00	92.810	89.720	7830.43	2642.09	-608.80	2594.57	1.42	
10245.00	91.510	90.060	7826.85	2736.54	-608.62	2689.50	1.41	
10339.00	91.970	91.300	7824.00	2830.13	-609.74	2783.44	1.41	
10434.00	90.800	90.930	7821.70	2924.80	-611.58	2878.40	1.29	

REFERENCE WELLPATH IDENTIFICATION

Operator	Burlington Resources	Slot	SLOT#01 PROSPER FARMS #4-65 2-1 4CH (1180'FSL & 510'FWL, SEC.02)
Area	COLORADO	Well	PROSPER FARMS #4-65 2-1 4CH
Field	ARAPAHOE COUNTY (NAD83/TN)	Wellbore	PROSPER FARMS #4-65 2-1 4CH AWB
Facility	SEC.02-T04S-R65W		

WELLPATH DATA (155 stations)

MD [ft]	Inclination [°]	Azimuth [°]	TVD [ft]	Vert Sect [ft]	North [ft]	East [ft]	DLS [°/100ft]	Comments
10482.00	90.400	90.260	7821.20	2972.61	-612.08	2926.39	1.63	
10528.00	89.720	90.200	7821.15	3018.40	-612.27	2972.39	1.48	
10572.00	89.720	90.210	7821.37	3062.20	-612.42	3016.39	0.02	
10623.00	89.820	90.290	7821.57	3112.97	-612.65	3067.39	0.25	
10668.00	90.250	90.790	7821.54	3157.79	-613.07	3112.39	1.47	
10717.00	90.060	90.560	7821.41	3206.60	-613.65	3161.38	0.61	
10762.00	90.120	91.010	7821.34	3251.44	-614.26	3206.38	1.01	
10812.00	90.860	91.680	7820.91	3301.29	-615.44	3256.36	2.00	
10906.00	89.720	92.160	7820.44	3395.09	-618.59	3350.31	1.32	
10951.00	89.880	92.710	7820.59	3440.02	-620.50	3395.26	1.27	
11000.00	89.600	92.720	7820.82	3488.95	-622.82	3444.21	0.57	
11045.00	90.090	93.000	7820.94	3533.89	-625.07	3489.15	1.25	
11095.00	89.660	93.350	7821.05	3583.85	-627.84	3539.08	1.11	
11140.00	89.630	92.820	7821.33	3628.80	-630.26	3584.01	1.18	
11189.00	90.310	93.800	7821.35	3677.76	-633.09	3632.93	2.43	
11284.00	91.050	94.440	7820.22	3772.71	-639.91	3727.67	1.03	
11378.00	92.380	95.550	7817.41	3866.66	-648.09	3821.27	1.84	
11473.00	92.220	95.580	7813.60	3961.58	-657.30	3915.75	0.17	
11567.00	92.150	95.190	7810.01	4055.51	-666.11	4009.26	0.42	
11662.00	92.130	94.920	7806.47	4150.44	-674.48	4103.83	0.28	
11756.00	92.000	95.210	7803.08	4244.38	-682.77	4197.40	0.34	
11806.00	90.800	94.720	7801.86	4294.36	-687.10	4247.20	2.59	
11851.00	89.410	94.890	7801.78	4339.35	-690.86	4292.04	3.11	
11901.00	89.420	95.040	7802.29	4389.34	-695.19	4341.85	0.30	
11945.00	89.600	95.090	7802.66	4433.34	-699.08	4385.67	0.42	
11994.00	89.350	95.020	7803.11	4482.33	-703.39	4434.48	0.53	
12040.00	89.140	94.820	7803.72	4528.33	-707.34	4480.31	0.63	
12089.00	89.230	95.150	7804.42	4577.32	-711.60	4529.12	0.70	
12134.00	88.640	95.240	7805.25	4622.31	-715.67	4573.92	1.33	
12183.00	89.320	95.650	7806.12	4671.30	-720.32	4622.70	1.62	
12228.00	90.400	95.390	7806.23	4716.30	-724.65	4667.49	2.47	
12272.00	91.170	95.760	7805.63	4760.29	-728.92	4711.27	1.94	
12323.00	91.080	93.750	7804.63	4811.27	-733.15	4762.09	3.94	
12366.00	91.760	92.620	7803.56	4854.22	-735.54	4805.00	3.07	
12417.00	91.690	91.450	7802.03	4905.09	-737.35	4855.95	2.30	
12474.00	91.970	91.440	7800.21	4961.91	-738.78	4912.90	0.49	
12512.00	92.160	91.460	7798.84	4999.78	-739.74	4950.86	0.50	
12574.00	92.470	91.730	7796.33	5061.57	-741.47	5012.79	0.66	
12606.00	91.600	91.410	7795.20	5093.47	-742.34	5044.76	2.90	
12655.00	90.990	90.440	7794.09	5142.29	-743.14	5093.74	2.34	
12701.00	91.200	90.230	7793.21	5188.08	-743.40	5139.73	0.65	
12747.00	91.510	90.620	7792.12	5233.87	-743.75	5185.71	1.08	
12795.00	90.650	90.250	7791.22	5281.66	-744.11	5233.70	1.95	
12841.00	90.620	89.730	7790.71	5327.43	-744.10	5279.70	1.13	
12890.00	89.780	88.830	7790.54	5376.12	-743.49	5328.70	2.51	

REFERENCE WELLPATH IDENTIFICATION

Operator	Burlington Resources	Slot	SLOT#01 PROSPER FARMS #4-65 2-1 4CH (1180'FSL & 510'FWL, SEC.02)
Area	COLORADO	Well	PROSPER FARMS #4-65 2-1 4CH
Field	ARAPAHOE COUNTY (NAD83/TN)	Wellbore	PROSPER FARMS #4-65 2-1 4CH AWB
Facility	SEC.02-T04S-R65W		

WELLPATH DATA (155 stations)

MD [ft]	Inclination [°]	Azimuth [°]	TVD [ft]	Vert Sect [ft]	North [ft]	East [ft]	DLS [°/100ft]	Comments
12936.00	89.380	88.680	7790.88	5421.79	-742.49	5374.68	0.93	
12984.00	89.570	88.950	7791.32	5469.44	-741.49	5422.67	0.69	
13079.00	89.080	89.080	7792.43	5563.79	-739.86	5517.65	0.53	
13173.00	88.830	88.970	7794.15	5657.14	-738.26	5611.62	0.29	
13268.00	88.980	89.020	7795.96	5751.48	-736.60	5706.59	0.17	
13362.00	88.920	88.960	7797.69	5844.82	-734.94	5800.56	0.09	
13457.00	89.170	89.320	7799.27	5939.19	-733.51	5895.53	0.46	
13551.00	88.680	89.240	7801.03	6032.59	-732.33	5989.51	0.53	
13646.00	89.020	88.800	7802.94	6126.93	-730.71	6084.48	0.59	
13740.00	89.410	87.960	7804.23	6220.15	-728.05	6178.43	0.99	
13834.00	90.250	87.780	7804.51	6313.28	-724.56	6272.36	0.91	
13929.00	91.720	88.990	7802.87	6407.49	-721.88	6367.31	2.00	
14023.00	92.200	89.370	7799.66	6500.83	-720.54	6461.24	0.65	
14117.00	91.880	89.620	7796.31	6594.23	-719.71	6555.18	0.43	
14212.00	91.760	89.240	7793.30	6688.61	-718.76	6650.13	0.42	
14306.00	91.140	88.990	7790.92	6781.97	-717.31	6744.08	0.71	
14401.00	91.540	89.830	7788.70	6876.37	-716.33	6839.05	0.98	
14495.00	91.480	89.920	7786.22	6969.86	-716.13	6933.02	0.12	
14549.00	90.370	89.320	7785.35	7023.55	-715.77	6987.01	2.34	LAST BHI MWD SURVEY
14617.00	90.370	89.320	7784.91	7091.13	-714.96	7055.00	0.00	PROJECTION TO BIT

HOLE & CASING SECTIONS - Ref Wellbore: PROSPER FARMS #4-65 2-1 4CH AWB Ref Wellpath: PROSPER FARMS #4-65 2-1 4CH AWP

String/Diameter	Start MD [ft]	End MD [ft]	Interval [ft]	Start TVD [ft]	End TVD [ft]	Start N/S [ft]	Start E/W [ft]	End N/S [ft]	End E/W [ft]
9.625in Casing Surface	26.25	2176.00	2149.75	26.25	2175.94	0.00	0.00	-0.63	-12.21
8.5in Open Hole	2176.00	14617.00	12441.00	2175.94	7784.91	-0.63	-12.21	-714.96	7055.00

REFERENCE WELLPATH IDENTIFICATION			
Operator	Burlington Resources	Slot	SLOT#01 PROSPER FARMS #4-65 2-1 4CH (1180'FSL & 510'FWL, SEC.02)
Area	COLORADO	Well	PROSPER FARMS #4-65 2-1 4CH
Field	ARAPAHOE COUNTY (NAD83/TN)	Wellbore	PROSPER FARMS #4-65 2-1 4CH AWB
Facility	SEC.02-T04S-R65W		

TARGETS								
Name	TVD [ft]	North [ft]	East [ft]	Grid East [US ft]	Grid North [US ft]	Latitude	Longitude	Shape
SEC.01-T04S-R65W	-0.25	-40.47	39.85	3242233.14	1691470.91	39°43'43.460"N	104°38'19.560"W	polygon
SEC.01-T04S-R65W NE CORNER	-0.25	3957.23	10066.26	3252221.15	1695563.44	39°44'22.949"N	104°36'11.210"W	point
SEC.01-T04S-R65W SE CORNER	-0.25	-1312.32	10023.05	3252227.89	1690293.75	39°43'30.871"N	104°36'11.790"W	point
SEC.02-T04S-R65W	-0.25	-40.47	39.85	3242233.14	1691470.91	39°43'43.460"N	104°38'19.560"W	polygon
SEC.02-T04S-R65W NE CORNER	-0.25	3991.40	4787.94	3246942.78	1695547.58	39°44'23.302"N	104°37'18.779"W	point
SEC.02-T04S-R65W NW CORNER	-0.25	4019.00	-498.52	3241656.33	1695525.07	39°44'23.579"N	104°38'26.452"W	point
SEC.02-T04S-R65W SE CORNER	-0.25	-1224.96	4756.01	3246960.29	1690331.18	39°43'31.750"N	104°37'19.200"W	point
SEC.02-T04S-R65W SW CORNER	-0.25	-1174.76	-513.24	3241690.83	1690331.43	39°43'32.250"N	104°38'26.639"W	point
SEC.01/02-T04S-R65W HARDLINES (460'SETBACKS)	7751.75	-40.47	39.85	3242233.14	1691470.91	39°43'43.460"N	104°38'19.560"W	polygon
PROSPER FARMS #4-65 2-1 4CH BHL ON PLAT REV-1 (560'FSL & 2310'FWL, SEC.01)	7753.75	-703.28	7068.63	3249267.85	1690874.76	39°43'36.900"N	104°36'49.600"W	point
PROSPER FARMS #4-65 2-1 4CH BHL ON PLAT REV-2 (560'FSL & 2310'FWL, SEC.01)	7816.00	-703.28	7068.63	3249267.85	1690874.76	39°43'36.900"N	104°36'49.600"W	point

WELLPATH COMPOSITION - Ref Wellbore: PROSPER FARMS #4-65 2-1 4CH AWP				Ref Wellpath: PROSPER FARMS #4-65 2-1 4CH AWP	
Start MD [ft]	End MD [ft]	Positional Uncertainty Model	Log Name/Comment	Wellbore	
26.25	2117.00	BHI Generic gyro - continuous (Standard)	GYRO SURFACE SURVEYS <26.25 - 2117>	PROSPER FARMS #4-65 2-1 4CH AWB	
2117.00	14549.00	Custom BHI NaviTrak (Standard Rotating+Axial Corr) (Rockies 0.03Gt model)	BHI MWD NAVI (STANDARD + AXIAL) <2117 - 14549>	PROSPER FARMS #4-65 2-1 4CH AWB	
14549.00	14617.00	Blind Drilling (std)	Projection to bit	PROSPER FARMS #4-65 2-1 4CH AWB	

REFERENCE WELLPATH IDENTIFICATION			
Operator	Burlington Resources	Slot	SLOT#01 PROSPER FARMS #4-65 2-1 4CH (1180'FSL & 510'FWL, SEC.02)
Area	COLORADO	Well	PROSPER FARMS #4-65 2-1 4CH
Field	ARAPAHOE COUNTY (NAD83/TN)	Wellbore	PROSPER FARMS #4-65 2-1 4CH AWB
Facility	SEC.02-T04S-R65W		

WELLPATH COMMENTS					
MD [ft]	Inclination [°]	Azimuth [°]	TVD [ft]	Comment	
2117.00	0.140	250.090	2116.94	TIE INTO GYRO SURVEYS	
14549.00	90.370	89.320	7785.35	LAST BHI MWD SURVEY	
14617.00	90.370	89.320	7784.91	PROJECTION TO BIT	