

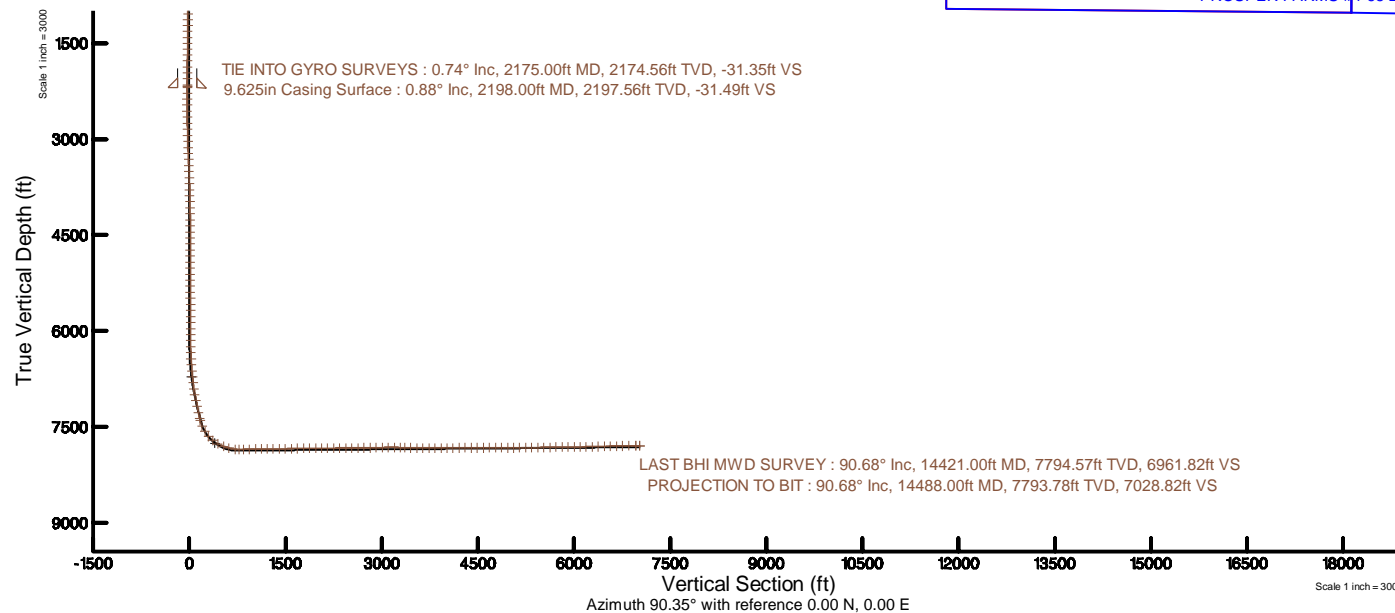
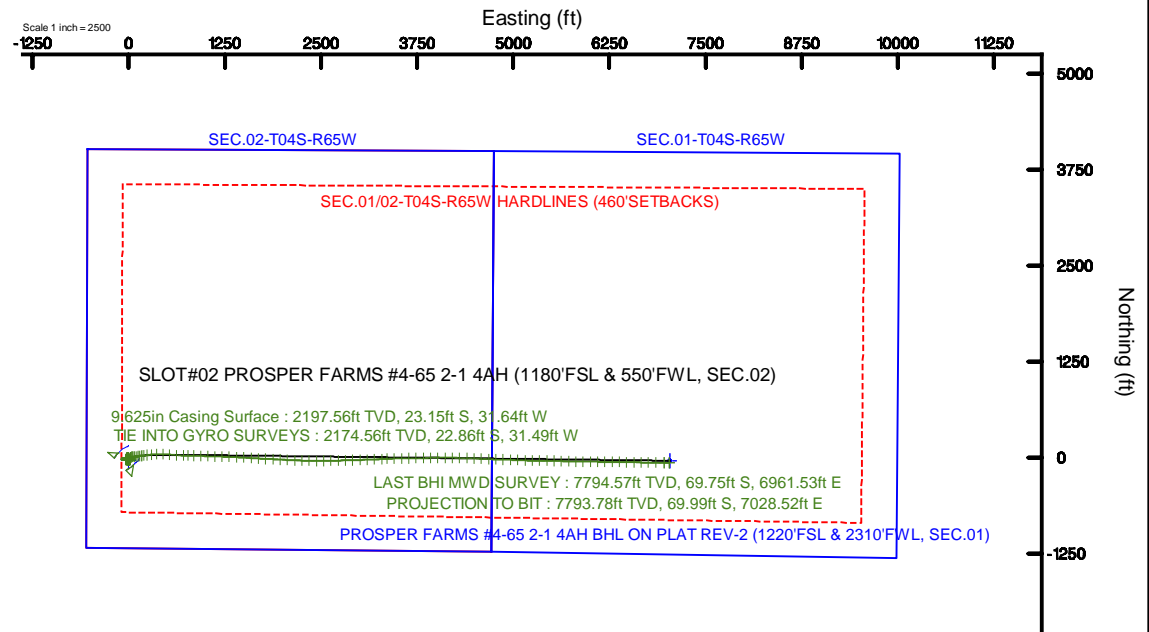
# Burlington Resources

Location: COLORADO Slot: SLOT#02 PROSPER FARMS #4-65 2-1 4AH (1180'FSL & 550'FWL, SEC.02)  
 Field: ARAPAHOE COUNTY (NAD83/TN) Well: PROSPER FARMS #4-65 2-1 4AH  
 Facility: SEC.02-T04S-R65W Wellbore: PROSPER FARMS #4-65 2-1 4AH PWB

Plot reference wellpath is PROSPER FARMS #4-65 2-1 4AH (REV-B.0) PWB	Grid System: NAD83 / Lambert Colorado SP, Central Zone (602), US feet
True vertical depths are referenced to RIG (26.25KB) (RKB)	* = Wellpath was transformed from a different geodetic datum
Measured depths are referenced to RIG (26.25KB) (RKB)	North Reference: True north
RIG (26.25KB) (RKB) to Mean Sea Level: 5658.25 feet	Scale: True distance
Mean Sea Level to Mud line (At Slot: SLOT#02 PROSPER FARMS #4-65 2-1 4AH (1180'FSL & 550'FWL, SEC.02)): 0 feet	Depths are in feet
Coordinates are in feet referenced to Slot	Created by: bensjacj on 2017-06-23
	Database: WA_DEN_Denver_Defn

**BURLINGTON**  
RESOURCES

**BAKER  
HUGHES**  
INTEQ



N  
TRUE

W E

BGGM (1900.0 to 2018.0) Dip: 66.40° Field: 52066.2 nT  
 Magnetic North is 8.27 degrees East of True North (at 05/31/2017)

To correct azimuth from Magnetic to True add 8.27 degrees

A compass rose diagram showing the relationship between magnetic and true north. The true north is indicated by a vertical arrow pointing upwards. The magnetic north is indicated by a red arrow pointing slightly to the right of true north. The diagram includes a circle with 'W' and 'E' labels.

REFERENCE WELLPATH IDENTIFICATION			
Operator	Burlington Resources	Slot	SLOT#02 PROSPER FARMS #4-65 2-1 4AH (1180'FSL & 550'FWL, SEC.02)
Area	COLORADO	Well	PROSPER FARMS #4-65 2-1 4AH
Field	ARAPAHOE COUNTY (NAD83/TN)	Wellbore	PROSPER FARMS #4-65 2-1 4AH AWP
Facility	SEC.02-T04S-R65W		

REPORT SETUP INFORMATION			
Projection System	NAD83 / Lambert Colorado SP, Central Zone (502), US feet	Software System	WellArchitect® 5.0
North Reference	True	User	Bensjacj
Scale	0.999996	Report Generated	06/23/2017 at 1:45 PM
Convergence at slot	0.55° East	Database/Source file	WA_DEN_Denver_Defn/PROSPER_FARMS_#4-65_2-1_4AH_AWP.xml

WELLPATH LOCATION						
	Local coordinates		Grid coordinates		Geographic coordinates	
	North[ft]	East[ft]	Easting[US ft]	Northing[US ft]	Latitude	Longitude
Slot Location	40.47	-0.00	3242232.76	1691511.38	39°43'43.860"N	104°38'19.560"W
Facility Reference Pt			3242233.14	1691470.91	39°43'43.460"N	104°38'19.560"W
Field Reference Pt			3256721.09	1679994.75	39°41'48.650"N	104°35'15.610"W

WELLPATH DATUM			
Calculation method	Minimum curvature	RIG (26.25'KB) (RKB) to Facility Vertical Datum	5658.25ft
Horizontal Reference Pt	Slot	RIG (26.25'KB) (RKB) to Mean Sea Level	5658.25ft
Vertical Reference Pt	RIG (26.25'KB) (RKB)	RIG (26.25'KB) (RKB) to Mud Line at Slot (SLOT#02 PROSPER FARMS #4-65 2-1 4AH (1180'FSL & 550'FWL, SEC.02))	5658.25ft
MD Reference Pt	RIG (26.25'KB) (RKB)	Section Origin	N 0.00, E 0.00 ft
Field Vertical Reference	Mean Sea Level	Section Azimuth	90.35°

REFERENCE WELLPATH IDENTIFICATION			
Operator	Burlington Resources	Slot	SLOT#02 PROSPER FARMS #4-65 2-1 4AH (1180'FSL & 550'FWL, SEC.02)
Area	COLORADO	Well	PROSPER FARMS #4-65 2-1 4AH
Field	ARAPAHOE COUNTY (NAD83/TN)	Wellbore	PROSPER FARMS #4-65 2-1 4AH AWB
Facility	SEC.02-T04S-R65W		

WELLPATH DATA (133 stations)								
MD [ft]	Inclination [°]	Azimuth [°]	TVD [ft]	Vert Sect [ft]	North [ft]	East [ft]	DLS [°/100ft]	Comments
2175.00	0.740	202.540	2174.56	-31.35	-22.86	-31.49	0.08	TIE INTO GYRO SURVEYS
2281.00	1.440	224.760	2280.54	-32.54	-24.44	-32.69	0.76	
2376.00	0.960	206.820	2375.52	-33.73	-25.99	-33.89	0.64	
2470.00	1.490	205.000	2469.50	-34.59	-27.80	-34.76	0.57	
2565.00	0.740	178.040	2564.48	-35.08	-29.54	-35.26	0.94	
2659.00	2.250	112.490	2658.45	-33.35	-30.85	-33.54	2.19	
2753.00	1.760	109.500	2752.39	-30.27	-32.04	-30.47	0.53	
2848.00	1.580	114.930	2847.35	-27.70	-33.08	-27.91	0.25	
2942.00	1.450	115.490	2941.32	-25.45	-34.13	-25.66	0.14	
3037.00	1.350	121.050	3036.29	-23.40	-35.23	-23.62	0.18	
3131.00	2.080	108.480	3130.25	-20.82	-36.34	-21.05	0.87	
3225.00	2.690	89.440	3224.17	-17.00	-36.86	-17.23	1.06	
3320.00	2.710	90.170	3319.06	-12.52	-36.84	-12.75	0.04	
3415.00	2.240	90.740	3413.97	-8.42	-36.88	-8.65	0.50	
3509.00	1.990	97.100	3507.91	-4.96	-37.10	-5.19	0.36	
3604.00	1.750	90.350	3602.86	-1.87	-37.31	-2.11	0.34	
3698.00	1.460	100.990	3696.82	0.74	-37.55	0.51	0.44	
3792.00	1.240	98.370	3790.79	2.92	-37.93	2.69	0.24	
3887.00	1.240	114.330	3885.77	4.88	-38.50	4.64	0.36	
3981.00	1.960	51.400	3979.74	7.06	-37.92	6.82	1.89	
4076.00	1.330	53.330	4074.70	9.20	-36.24	8.98	0.67	
4170.00	0.930	58.320	4168.68	10.72	-35.19	10.50	0.44	
4264.00	0.590	50.460	4262.67	11.74	-34.48	11.52	0.38	
4358.00	0.490	42.170	4356.67	12.38	-33.88	12.17	0.13	
4453.00	0.240	123.160	4451.67	12.82	-33.69	12.61	0.54	
4547.00	0.760	213.200	4545.67	12.64	-34.31	12.43	0.85	
4642.00	0.460	167.020	4640.66	12.39	-35.21	12.17	0.58	
4736.00	0.470	135.390	4734.66	12.75	-35.86	12.53	0.27	
4830.00	0.860	348.100	4828.65	12.87	-35.44	12.65	1.36	
4924.00	1.090	351.590	4922.64	12.59	-33.86	12.38	0.25	
5019.00	0.860	345.090	5017.63	12.26	-32.28	12.06	0.27	
5113.00	0.620	2.240	5111.62	12.09	-31.09	11.90	0.34	
5207.00	0.790	27.460	5205.61	12.40	-30.01	12.22	0.37	
5302.00	1.370	35.380	5300.60	13.35	-28.50	13.18	0.63	
5396.00	1.260	33.660	5394.57	14.57	-26.73	14.40	0.12	
5491.00	1.130	37.290	5489.55	15.70	-25.11	15.55	0.16	
5586.00	1.140	28.360	5584.53	16.71	-23.53	16.56	0.19	
5680.00	1.450	15.280	5678.51	17.45	-21.56	17.32	0.45	
5774.00	1.310	17.810	5772.48	18.08	-19.39	17.96	0.16	
5868.00	1.140	18.020	5866.46	18.69	-17.48	18.58	0.18	
5963.00	1.270	358.990	5961.44	18.95	-15.53	18.85	0.44	
6058.00	1.970	356.420	6056.40	18.81	-12.85	18.73	0.74	
6152.00	2.320	352.300	6150.33	18.44	-9.35	18.38	0.41	
6246.00	2.210	29.900	6244.26	19.06	-5.89	19.03	1.56	
6341.00	2.900	51.440	6339.17	21.84	-2.81	21.82	1.23	

**REFERENCE WELLPATH IDENTIFICATION**

Operator	Burlington Resources	Slot	SLOT#02 PROSPER FARMS #4-65 2-1 4AH (1180'FSL & 550'FWL, SEC.02)
Area	COLORADO	Well	PROSPER FARMS #4-65 2-1 4AH
Field	ARAPAHOE COUNTY (NAD83/TN)	Wellbore	PROSPER FARMS #4-65 2-1 4AH AWB
Facility	SEC.02-T04S-R65W		

**WELLPATH DATA (133 stations)**

MD [ft]	Inclination [°]	Azimuth [°]	TVD [ft]	Vert Sect [ft]	North [ft]	East [ft]	DLS [°/100ft]	Comments
6436.00	3.480	56.090	6434.02	26.09	0.30	26.09	0.67	
6530.00	4.320	70.390	6527.81	31.77	3.08	31.79	1.36	
6624.00	4.990	82.990	6621.50	39.16	4.77	39.19	1.30	
6719.00	5.730	85.300	6716.08	47.98	5.66	48.01	0.81	
6813.00	6.650	85.520	6809.54	58.08	6.47	58.12	0.98	
6908.00	7.830	80.740	6903.78	69.94	7.94	69.99	1.39	
7002.00	10.420	85.280	6996.58	84.72	9.67	84.78	2.86	
7096.00	11.490	83.620	7088.87	102.49	11.41	102.56	1.19	
7190.00	12.570	79.630	7180.80	121.84	14.29	121.93	1.45	
7284.00	12.440	80.530	7272.57	141.86	17.80	141.97	0.25	
7379.00	12.390	82.050	7365.35	162.03	20.89	162.16	0.35	
7412.00	13.620	85.250	7397.50	169.40	21.70	169.54	4.32	
7507.00	22.030	83.580	7487.86	198.29	24.63	198.44	8.87	
7601.00	32.380	83.110	7571.35	240.88	29.63	241.07	11.01	
7696.00	41.810	85.140	7647.04	297.78	35.38	298.00	10.01	
7790.00	51.320	87.010	7711.60	365.77	39.96	366.03	10.22	
7884.00	61.650	92.330	7763.46	443.99	40.19	444.25	11.95	
7979.00	69.690	94.720	7802.57	530.34	34.82	530.56	8.77	
8073.00	74.590	92.940	7831.39	619.61	28.86	619.80	5.52	
8167.00	83.050	91.750	7849.60	711.69	25.11	711.86	9.09	
8230.00	90.090	90.850	7853.37	774.52	23.68	774.69	11.27	
8303.00	92.060	91.810	7852.00	847.50	21.99	847.65	3.00	
8394.00	92.340	92.100	7848.51	938.39	18.89	938.53	0.44	
8485.00	90.460	92.070	7846.28	1029.32	15.58	1029.44	2.07	
8577.00	90.250	91.690	7845.71	1121.29	12.56	1121.39	0.47	
8669.00	90.430	92.140	7845.17	1213.25	9.48	1213.33	0.53	
8763.00	90.490	92.310	7844.41	1307.20	5.83	1307.26	0.19	
8858.00	90.250	92.330	7843.80	1402.14	1.99	1402.18	0.25	
8953.00	91.200	93.140	7842.60	1497.05	-2.54	1497.06	1.31	
9047.00	92.190	93.830	7839.82	1590.87	-8.25	1590.84	1.28	
9142.00	91.360	93.900	7836.88	1685.64	-14.65	1685.58	0.88	
9237.00	90.520	92.570	7835.32	1780.51	-20.01	1780.42	1.66	
9331.00	90.060	92.180	7834.84	1874.45	-23.91	1874.33	0.64	
9425.00	91.420	93.620	7833.63	1968.34	-28.66	1968.20	2.11	
9520.00	89.660	92.720	7832.73	2063.22	-33.92	2063.05	2.08	
9614.00	90.000	92.360	7833.01	2157.15	-38.08	2156.95	0.53	
9709.00	90.680	91.750	7832.45	2252.10	-41.49	2251.89	0.96	
9803.00	90.890	91.220	7831.16	2346.08	-43.93	2345.85	0.61	
9898.00	91.290	91.090	7829.35	2441.05	-45.84	2440.81	0.44	
9993.00	89.780	88.550	7828.46	2536.03	-45.54	2535.80	3.11	
10087.00	91.110	89.900	7827.73	2630.00	-44.27	2629.78	2.02	
10181.00	89.910	87.640	7826.90	2723.96	-42.25	2723.75	2.72	
10276.00	90.590	88.260	7826.48	2818.87	-38.85	2818.68	0.97	
10370.00	91.110	88.420	7825.09	2912.80	-36.13	2912.63	0.58	
10465.00	91.730	88.420	7822.73	3007.72	-33.51	3007.57	0.65	

## REFERENCE WELLPATH IDENTIFICATION

Operator	Burlington Resources	Slot	SLOT#02 PROSPER FARMS #4-65 2-1 4AH (1180'FSL & 550'FWL, SEC.02)
Area	COLORADO	Well	PROSPER FARMS #4-65 2-1 4AH
Field	ARAPAHOE COUNTY (NAD83/TN)	Wellbore	PROSPER FARMS #4-65 2-1 4AH AWB
Facility	SEC.02-T04S-R65W		

## WELLPATH DATA (133 stations)

MD [ft]	Inclination [°]	Azimuth [°]	TVD [ft]	Vert Sect [ft]	North [ft]	East [ft]	DLS [°/100ft]	Comments
10559.00	90.990	88.800	7820.50	3101.65	-31.23	3101.51	0.88	
10654.00	88.680	86.840	7820.78	3196.54	-27.62	3196.43	3.19	
10748.00	88.670	86.870	7822.95	3290.34	-22.46	3290.27	0.03	
10816.00	88.460	87.300	7824.65	3358.21	-19.01	3358.16	0.70	
10910.00	89.170	88.670	7826.60	3452.11	-15.70	3452.08	1.64	
11005.00	89.170	88.710	7827.97	3547.06	-13.53	3547.04	0.04	
11099.00	89.230	89.040	7829.29	3641.02	-11.69	3641.01	0.36	
11194.00	89.480	89.190	7830.36	3735.99	-10.22	3736.00	0.31	
11288.00	89.510	89.070	7831.18	3829.96	-8.79	3829.98	0.13	
11383.00	90.490	89.160	7831.18	3924.94	-7.32	3924.97	1.04	
11477.00	91.020	89.360	7829.95	4018.91	-6.11	4018.95	0.60	
11572.00	90.960	90.100	7828.30	4113.89	-5.66	4113.94	0.78	
11666.00	90.860	90.820	7826.81	4207.88	-6.42	4207.92	0.77	
11760.00	89.820	91.420	7826.25	4301.87	-8.25	4301.90	1.28	
11855.00	89.290	91.340	7826.99	4396.85	-10.54	4396.87	0.56	
11949.00	89.970	92.030	7827.60	4490.82	-13.31	4490.83	1.03	
12044.00	90.920	92.980	7826.86	4585.75	-17.46	4585.73	1.41	
12138.00	90.990	93.160	7825.29	4679.63	-22.49	4679.58	0.21	
12233.00	89.230	91.270	7825.11	4774.57	-26.16	4774.50	2.72	
12327.00	89.690	91.800	7826.00	4868.55	-28.68	4868.46	0.75	
12422.00	89.540	91.980	7826.64	4963.51	-31.81	4963.41	0.25	
12516.00	90.220	92.380	7826.83	5057.46	-35.39	5057.34	0.84	
12611.00	91.790	92.810	7825.17	5152.37	-39.69	5152.23	1.71	
12705.00	91.020	91.140	7822.86	5246.30	-42.93	5246.14	1.96	
12800.00	89.910	89.510	7822.09	5341.30	-43.47	5341.13	2.08	
12894.00	89.910	90.180	7822.24	5435.29	-43.21	5435.13	0.71	
12989.00	91.390	91.800	7821.16	5530.27	-44.85	5530.10	2.31	
13083.00	92.090	92.460	7818.31	5624.18	-48.35	5623.99	1.02	
13178.00	90.460	91.540	7816.19	5719.12	-51.66	5718.91	1.97	
13272.00	90.340	91.430	7815.54	5813.10	-54.10	5812.87	0.17	
13366.00	90.400	90.840	7814.93	5907.09	-55.96	5906.85	0.63	
13461.00	90.310	90.380	7814.34	6002.08	-56.97	6001.84	0.49	
13555.00	90.650	90.240	7813.55	6096.08	-57.48	6095.84	0.39	
13649.00	91.850	90.840	7811.50	6190.05	-58.36	6189.81	1.43	
13744.00	91.260	90.660	7808.92	6285.02	-59.61	6284.77	0.65	
13838.00	91.420	91.040	7806.73	6378.99	-61.00	6378.73	0.44	
13933.00	91.660	91.120	7804.17	6473.95	-62.79	6473.68	0.27	
14027.00	91.480	90.910	7801.60	6567.90	-64.46	6567.63	0.29	
14122.00	91.330	90.790	7799.27	6662.87	-65.86	6662.59	0.20	
14216.00	91.020	90.960	7797.34	6756.85	-67.30	6756.56	0.38	
14311.00	90.710	90.810	7795.91	6851.83	-68.77	6851.54	0.36	
14421.00	90.680	90.210	7794.57	6961.82	-69.75	6961.53	0.55	LAST BHI MWD SURVEY
14488.00	90.680	90.210	7793.78	7028.82	-69.99	7028.52	0.00	PROJECTION TO BIT

REFERENCE WELLPATH IDENTIFICATION			
Operator	Burlington Resources	Slot	SLOT#02 PROSPER FARMS #4-65 2-1 4AH (1180'FSL & 550'FWL, SEC.02)
Area	COLORADO	Well	PROSPER FARMS #4-65 2-1 4AH
Field	ARAPAHOE COUNTY (NAD83/TN)	Wellbore	PROSPER FARMS #4-65 2-1 4AH AWB
Facility	SEC.02-T04S-R65W		

HOLE & CASING SECTIONS - Ref Wellbore: PROSPER FARMS #4-65 2-1 4AH AWB Ref Wellpath: PROSPER FARMS #4-65 2-1 4AH AWP									
String/Diameter	Start MD [ft]	End MD [ft]	Interval [ft]	Start TVD [ft]	End TVD [ft]	Start N/S [ft]	Start E/W [ft]	End N/S [ft]	End E/W [ft]
9.625in Casing Surface	26.25	2198.00	2171.75	26.25	2197.56	0.00	0.00	-23.15	-31.64
8.5in Open Hole	2198.00	14488.00	12290.00	2197.56	7793.78	-23.15	-31.64	-69.99	7028.52

TARGETS								
Name	TVD [ft]	North [ft]	East [ft]	Grid East [US ft]	Grid North [US ft]	Latitude	Longitude	Shape
SEC.01-T04S-R65W	-0.25	-40.47	0.00	3242233.14	1691470.91	39°43'43.460"N	104°38'19.560"W	polygon
SEC.02-T04S-R65W	-0.25	-40.47	0.00	3242233.14	1691470.91	39°43'43.460"N	104°38'19.560"W	polygon
PROSPER FARMS #4-65 2-1 4AH BHL ON PLAT REV-1 (1220'FSL & 2310'FWL, SEC.01)	7745.75	-43.55	7033.29	3249266.10	1691534.50	39°43'43.420"N	104°36'49.540"W	point
SEC.01/02-T04S-R65W HARDLINES (460'SETBACKS)	7751.75	-40.47	0.00	3242233.14	1691470.91	39°43'43.460"N	104°38'19.560"W	polygon
PROSPER FARMS #4-65 2-1 4AH BHL ON PLAT REV-2 (1220'FSL & 2310'FWL, SEC.01)	7816.00	-43.55	7033.29	3249266.10	1691534.50	39°43'43.420"N	104°36'49.540"W	point

WELLPATH COMPOSITION - Ref Wellbore: PROSPER FARMS #4-65 2-1 4AH AWB Ref Wellpath: PROSPER FARMS #4-65 2-1 4AH AWP			
Start MD [ft]	End MD [ft]	Positional Uncertainty Model	Log Name/Comment
26.25	2175.00	BHI Generic gyro - continuous (Standard)	GYRO SURFACE SURVEYS <26.25 - 2175>
2175.00	14421.00	Custom BHI NaviTrak (Standard Rotating+Axial Corr) (Rockies 0.03Gt model)	BHI MWD NAVI (STANDARD + AXIAL) <2175 - 14421>
14421.00	14488.00	Blind Drilling (std)	Projection to bit

REFERENCE WELLPATH IDENTIFICATION			
Operator	Burlington Resources	Slot	SLOT#02 PROSPER FARMS #4-65 2-1 4AH (1180'FSL & 550'FWL, SEC.02)
Area	COLORADO	Well	PROSPER FARMS #4-65 2-1 4AH
Field	ARAPAHOE COUNTY (NAD83/TN)	Wellbore	PROSPER FARMS #4-65 2-1 4AH AWB
Facility	SEC.02-T04S-R65W		

WELLPATH COMMENTS					
MD [ft]	Inclination [°]		Azimuth [°]	TVD [ft]	Comment
2175.00	0.740		202.540	2174.56	TIE INTO GYRO SURVEYS
14421.00	90.680		90.210	7794.57	LAST BHI MWD SURVEY
14488.00	90.680		90.210	7793.78	PROJECTION TO BIT