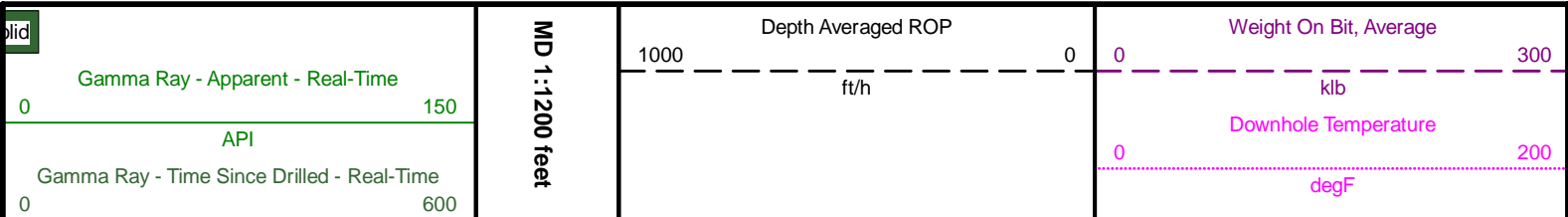


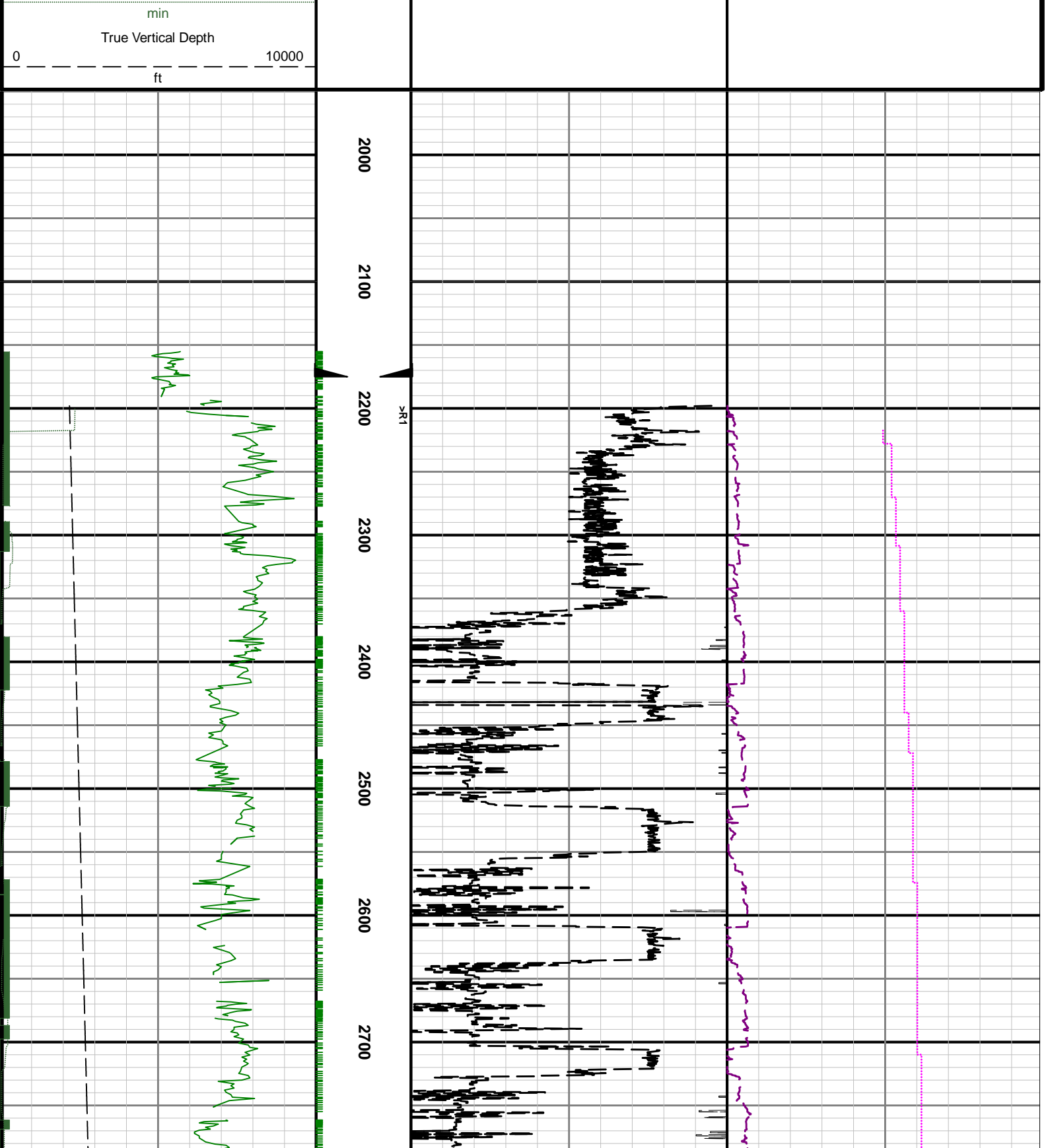


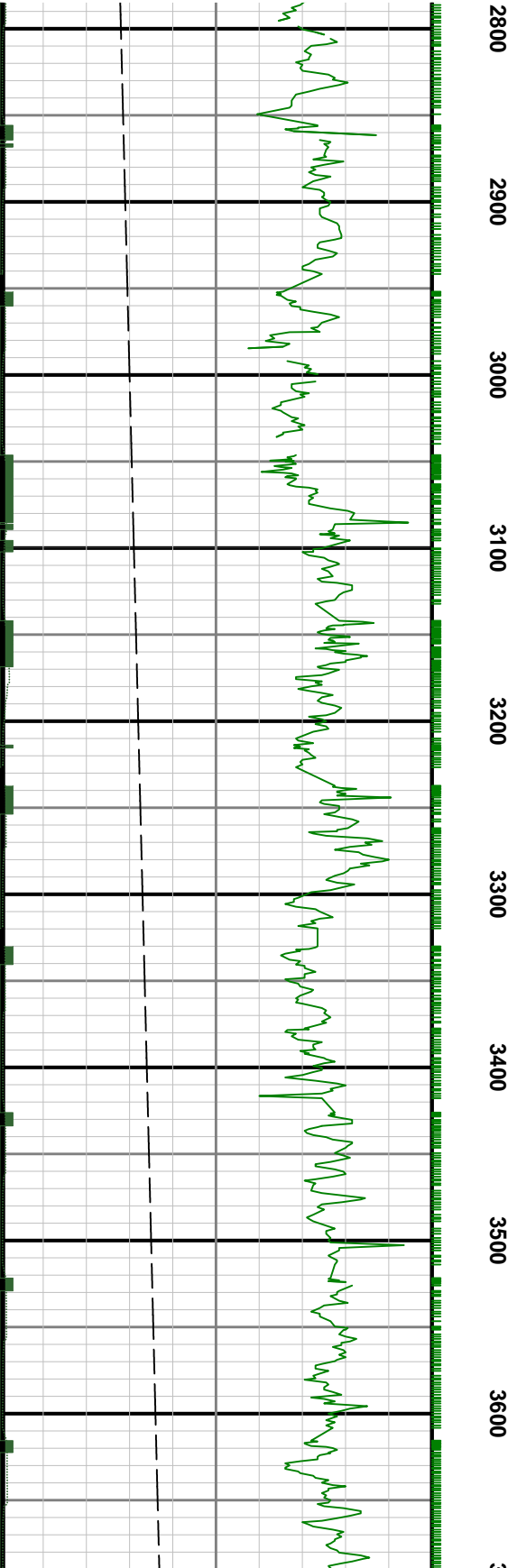
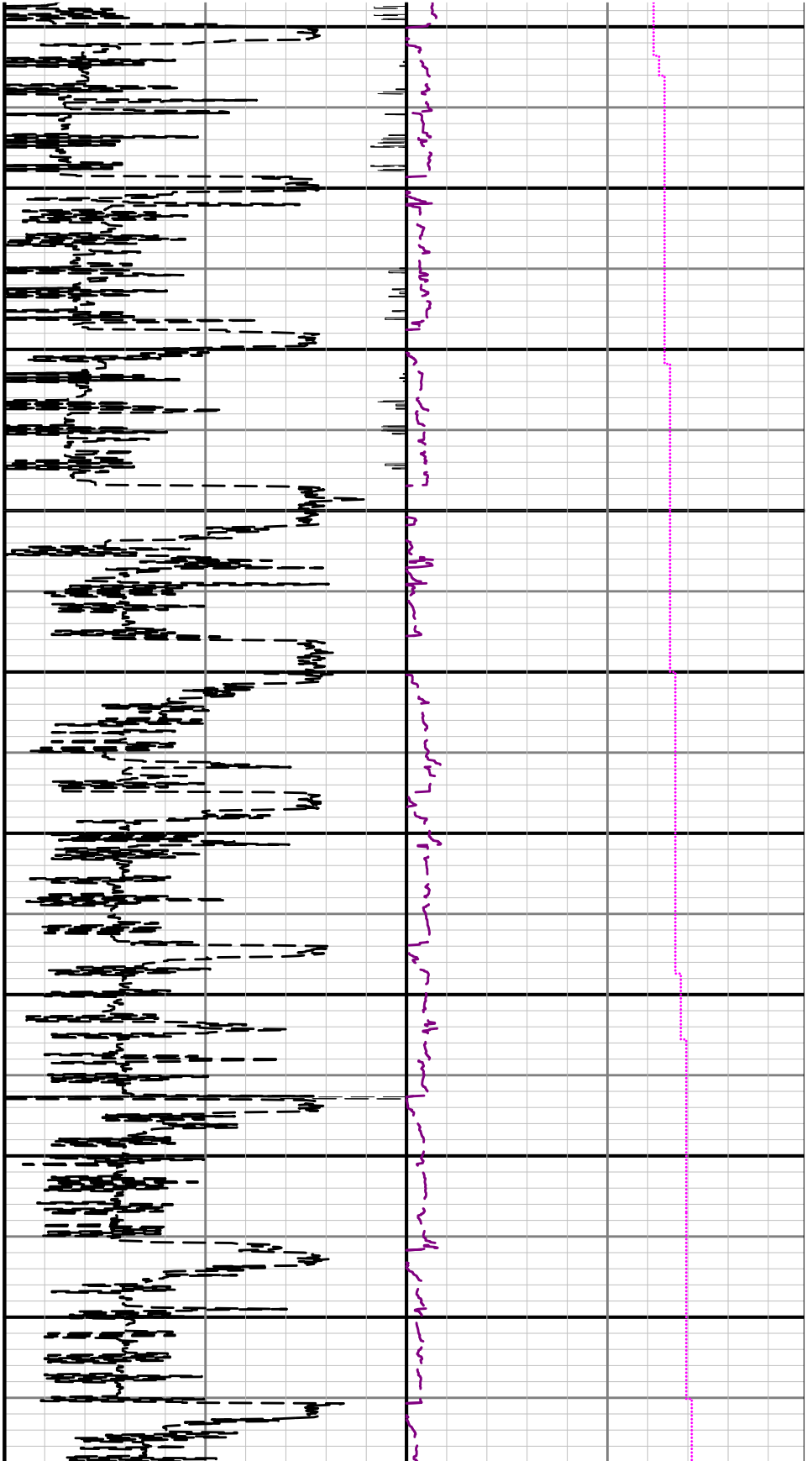
Drilling Dynamics
Gamma Ray

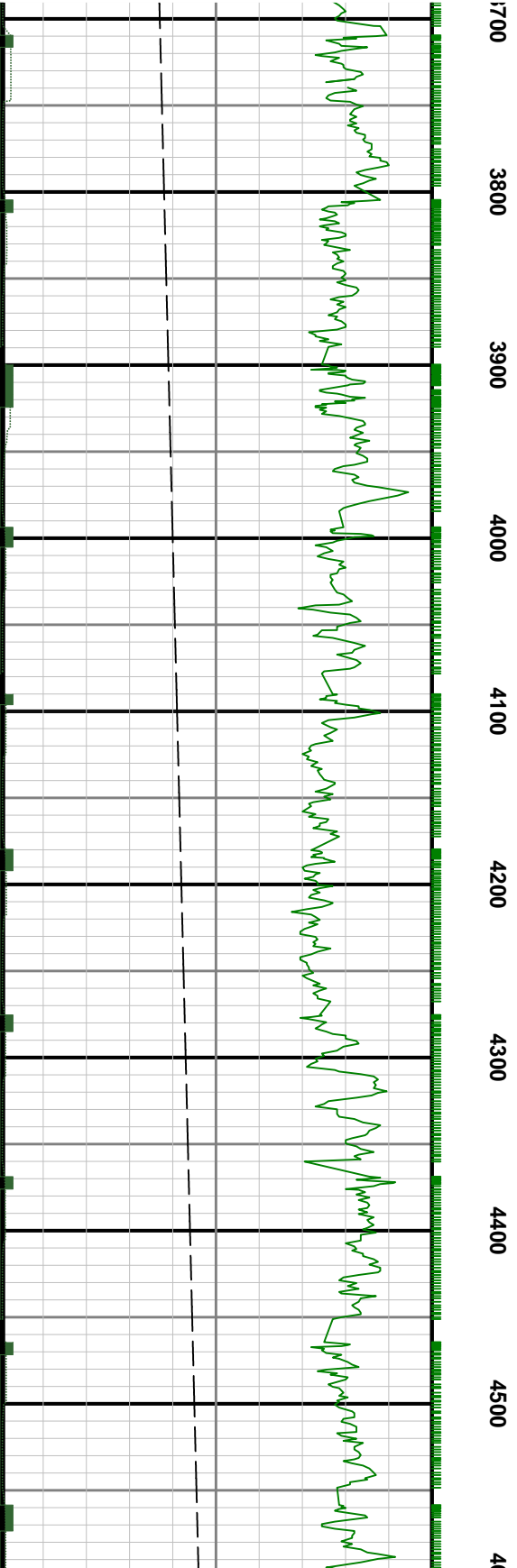
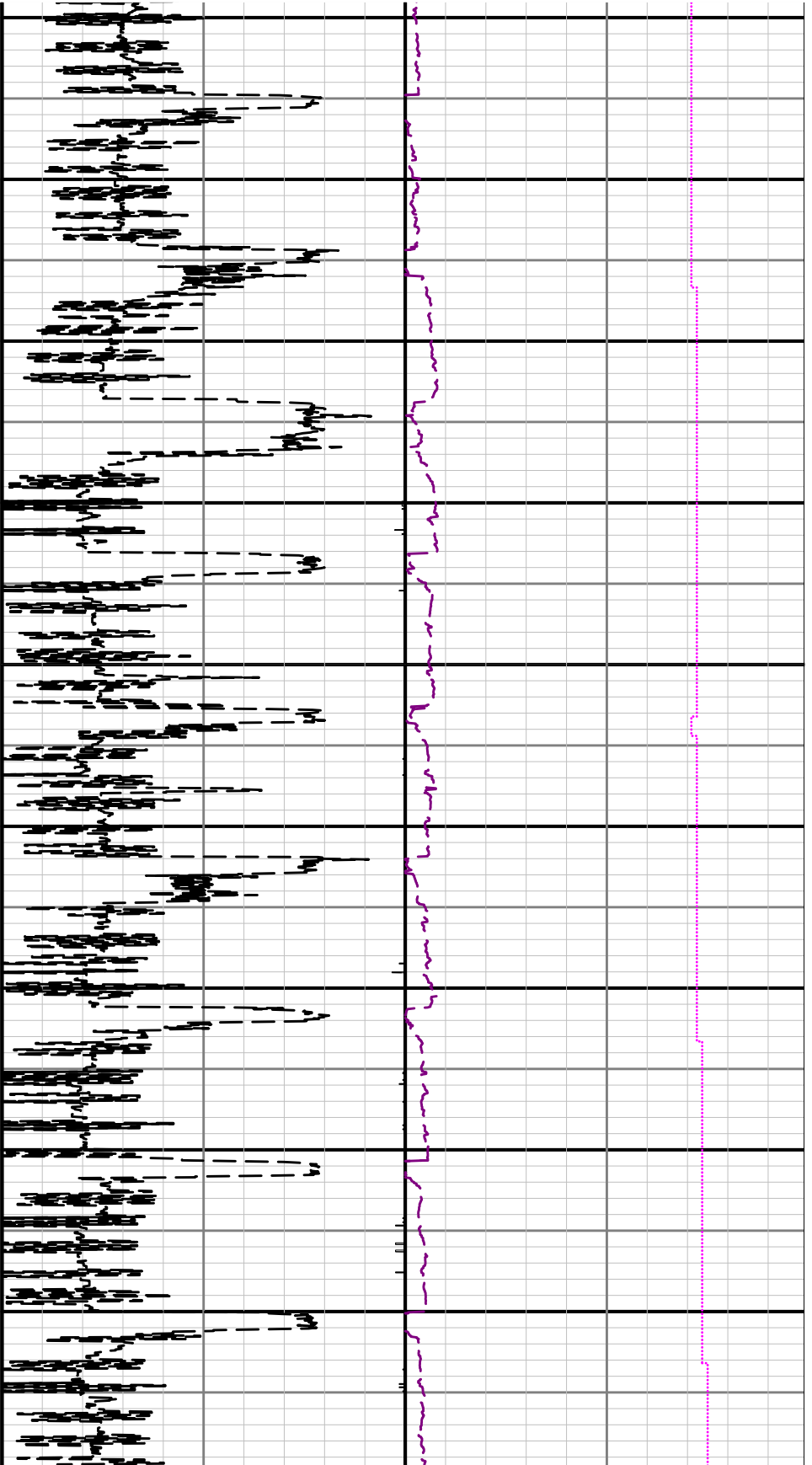
Scale: 1:1200 MD	Company: ConocoPhillips
Depth Reference: Driller's Depth	Well: PROSPER FARMS 4-65-2-1-4AH
	Field: N/A
	County: ArapahoeCountry: United States
	State: Colorado
Status: Field Print	Surface Location: Latitude: 40° 14' 11.11" N Longitude: 104° 41' 07.11" W
API: 05005072490000	Other Services: N/A
Job ID: 8514724	SEC: 2TWN: 4SRGE: 65W
Permanent Datum (P.D.): Ground Level	Elevation: 5632.00 ftInterval: 2198.00 ft - 12844.62 ft
Log Measured From: Rig Floor	Above P.D. 26.25 ftCreated: 2017-06-20 13:35:05
BHI Rep 1: N/A	BHI Rep 2: N/A
Client Representative: N/A	Elevations: Elev. KB: N/A Elev. DF: 5658.25 ft Elev. GL: 5632.00 ft

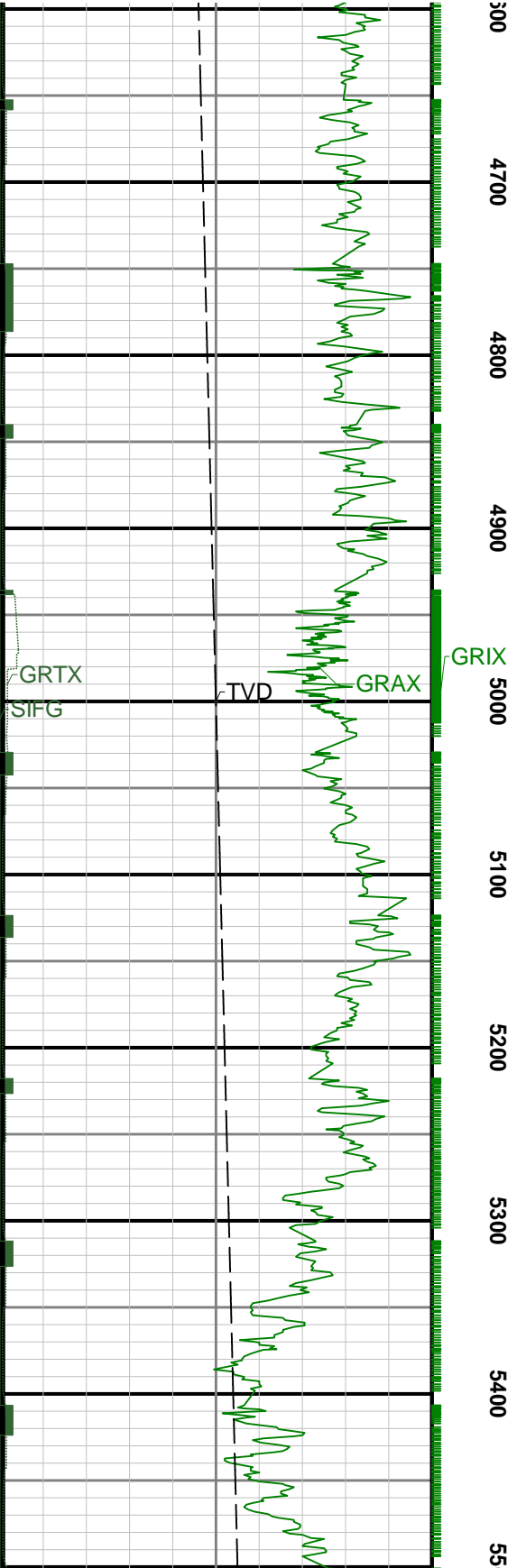
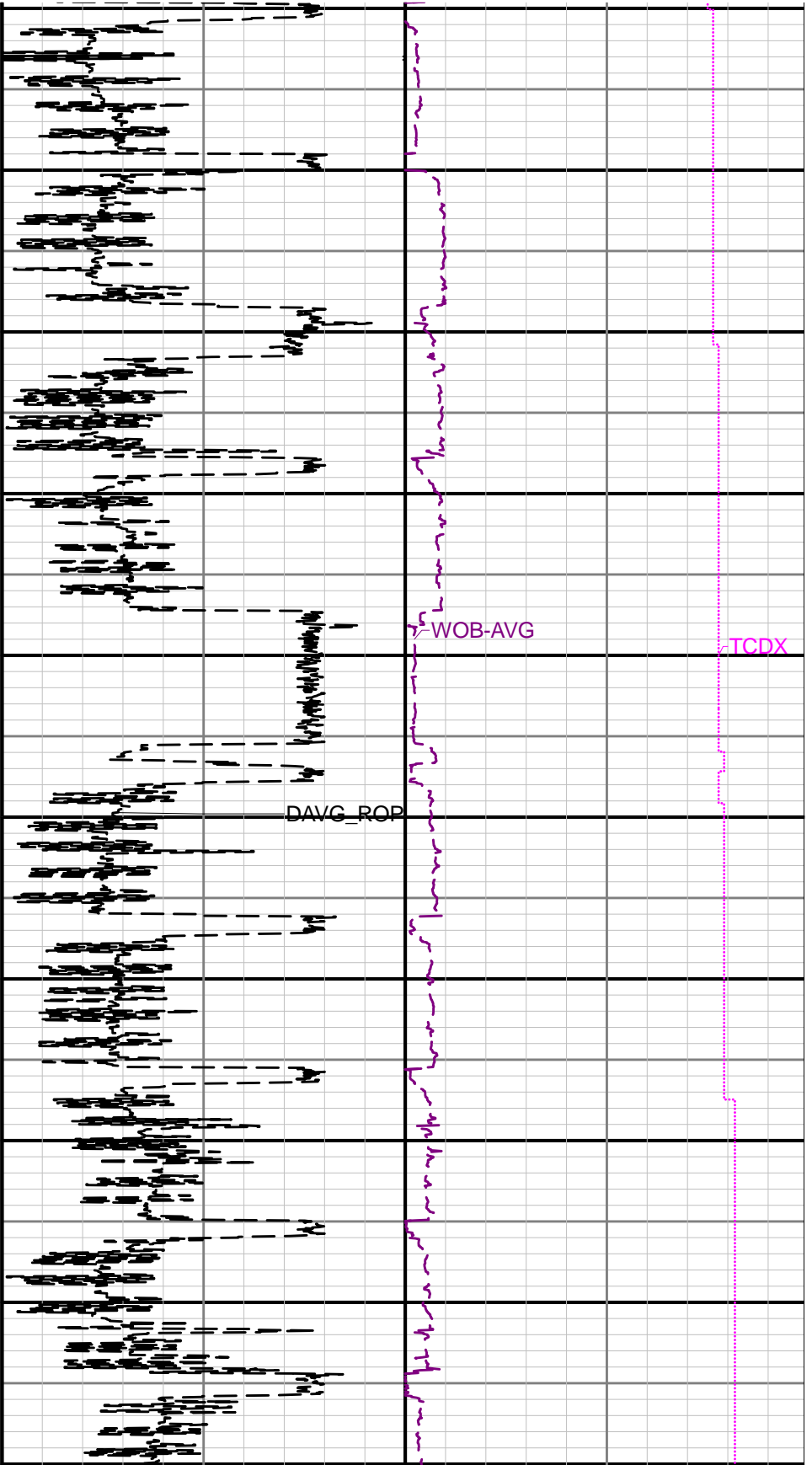
"These interpretations and analyses ("Interpretations") are opinions provided by Baker Hughes Oilfield Operations, Inc ("Baker Hughes"), based upon industry practice, empirical relationships, assumptions and measurements, (many of which may be provided by the customer). The Interpretations are not infallible and may be subject to different opinions. Vjwu."Dcmgt"JwiJgu"fqgu"pqv"ycttcpv"vjgkt"ceewtce{."eqttgevpguu."qt"eqorngvgpguu."qt"vjcv"vjg"ewuvqogtøu"cpflqt"cp{"vjktf"rctv{øu"tgnkcpeg"qp"uwej"Kpvgtrtgv cvkqpu"yknn"cee qornku j"cp{"rctvkewnct"tguwnvu0"Vjg"ewuvqogt"cuuwogu"hwnn"responsibility for the use of the Interpretations and for decisions based thereon and the customer agrees to release, defend and indemnify Baker Hughes, its parent, subsidiaries and affiliated or related entities, and subcontractors, together with its and their officers, directors, employees, agents and invitees against, any and all claims, losses, damages, or expenses sustained by the customer or any third party arising out of reliance upon or use of the Interpretations, without regard to the cause(s) thereof, including without limitation any form of negligence on the part of Baker Hughes. Unless other contract terms have been agreed to by the parties, each party's liabilities and qdnkicvkqpu"ujcnn"dg"iqxgtpgf"d{"Dcmgt"JwiJgu"Kpeqtrqt cvgføu"Yqtnfykfg"Vgtou"cpf"Eqpfkvkqpu0\$""

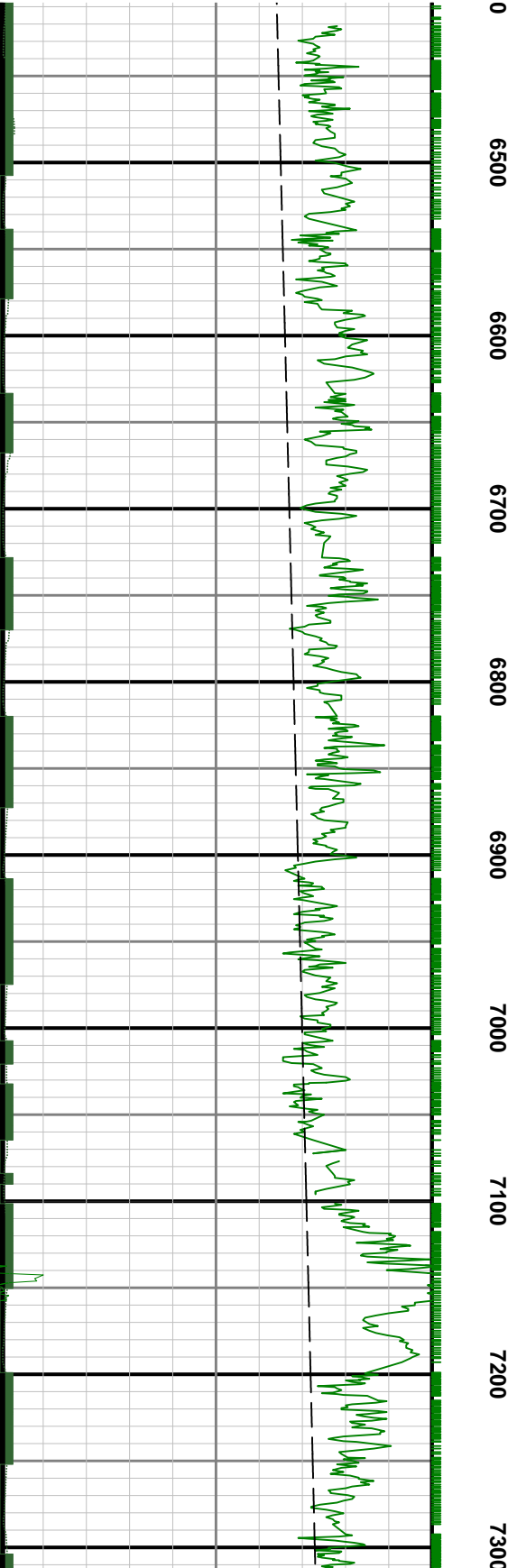
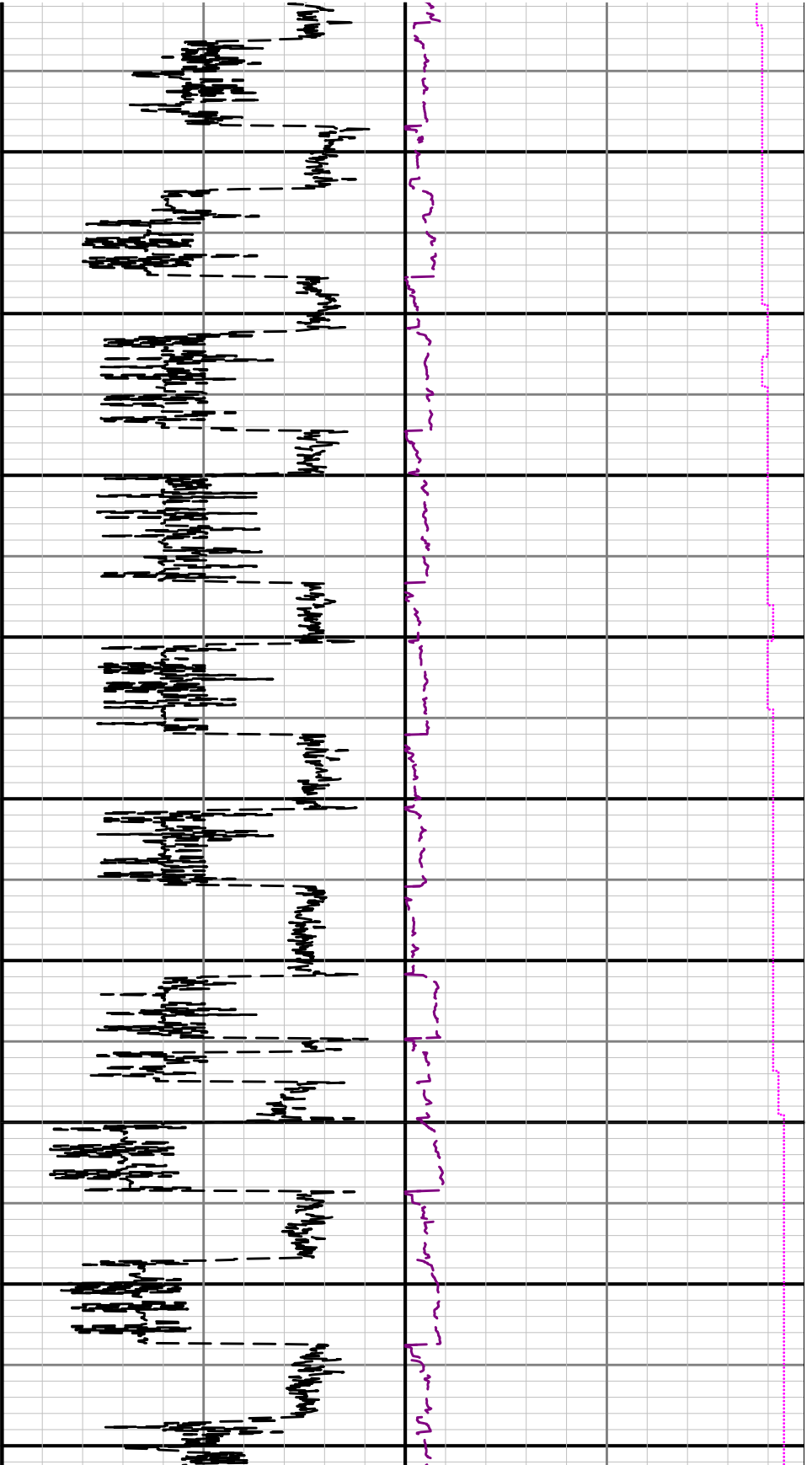


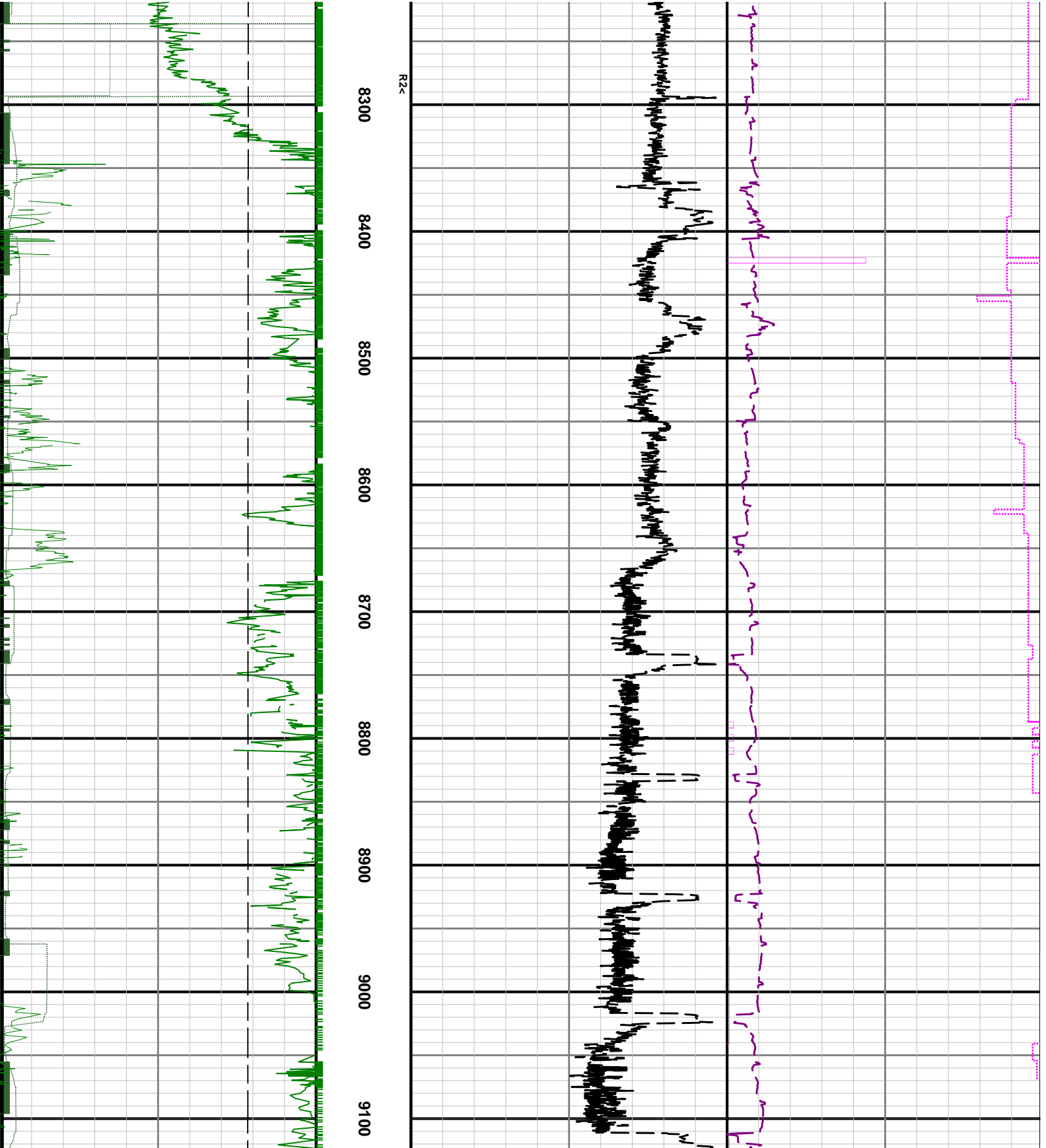


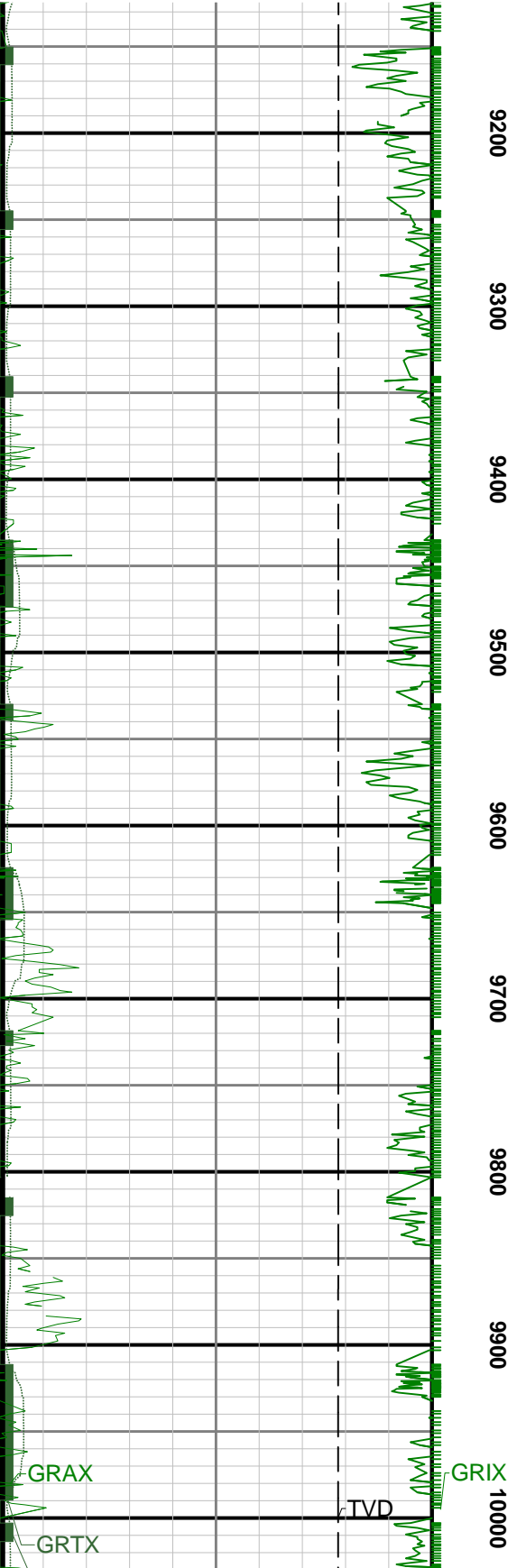
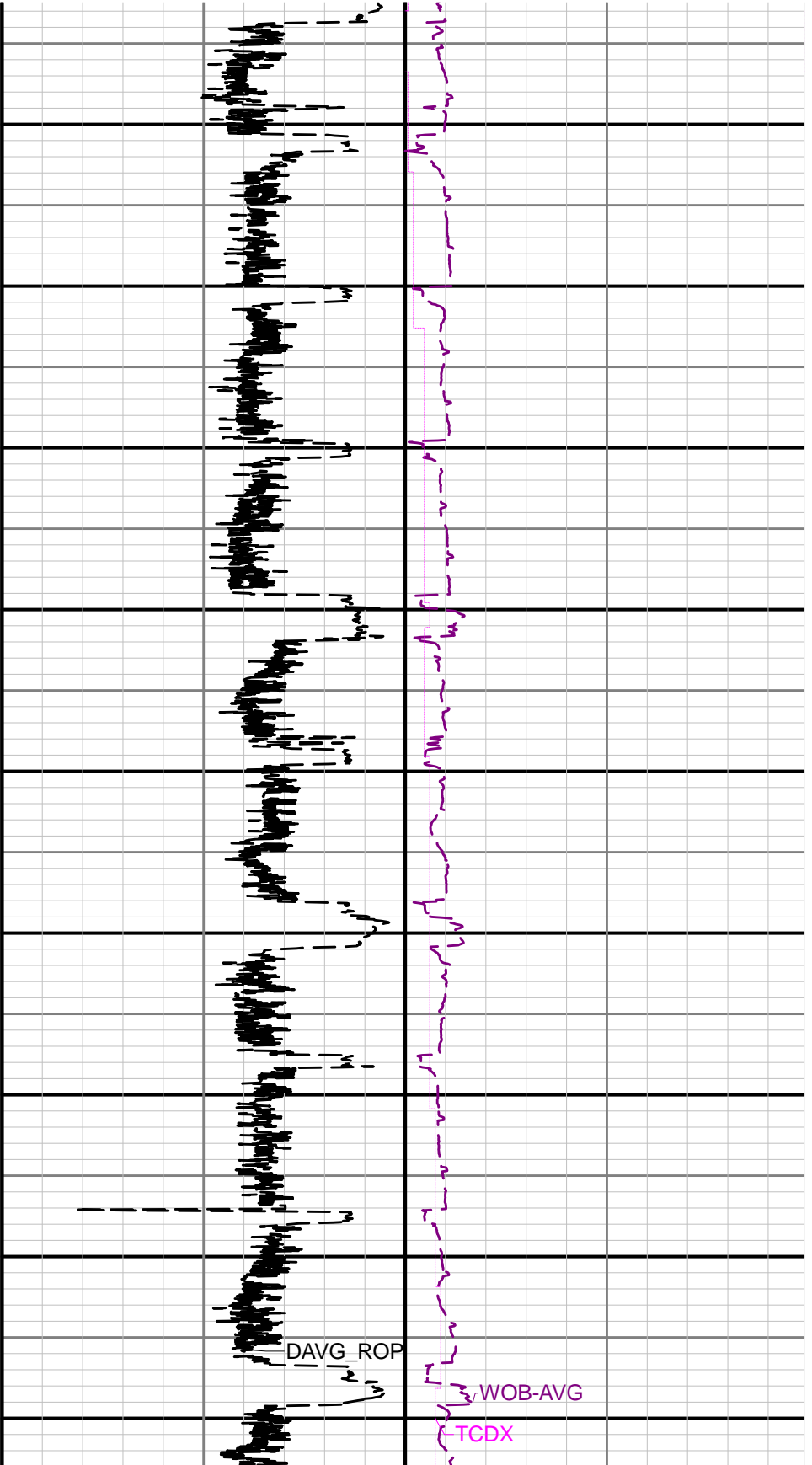


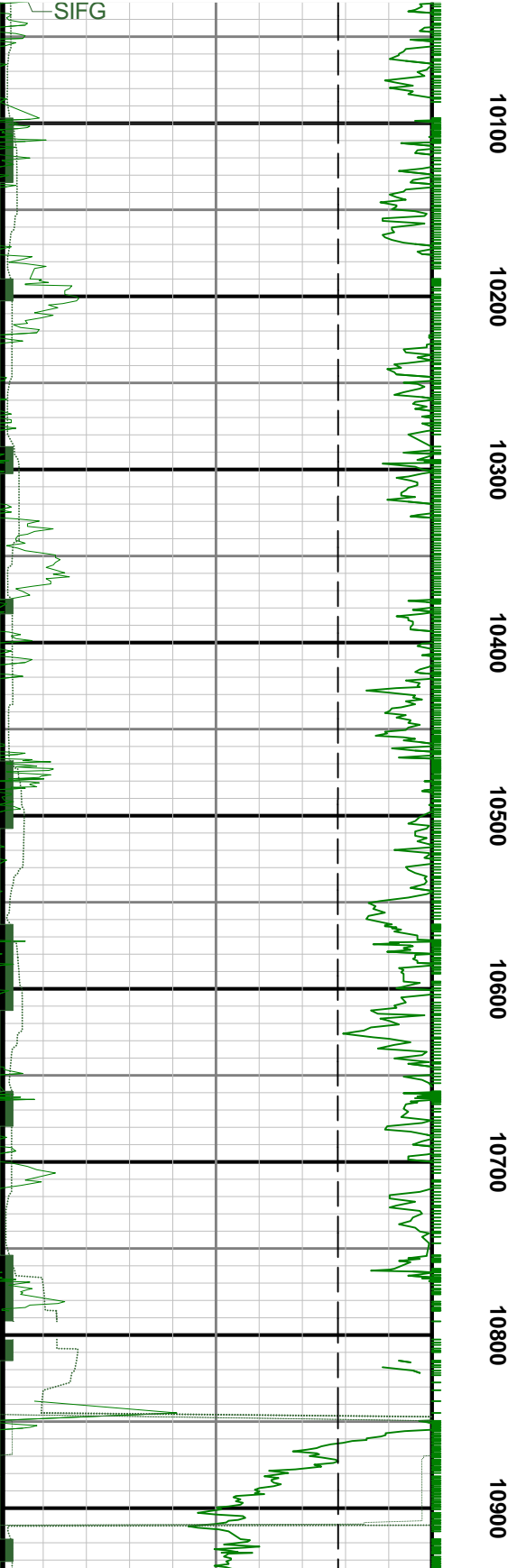
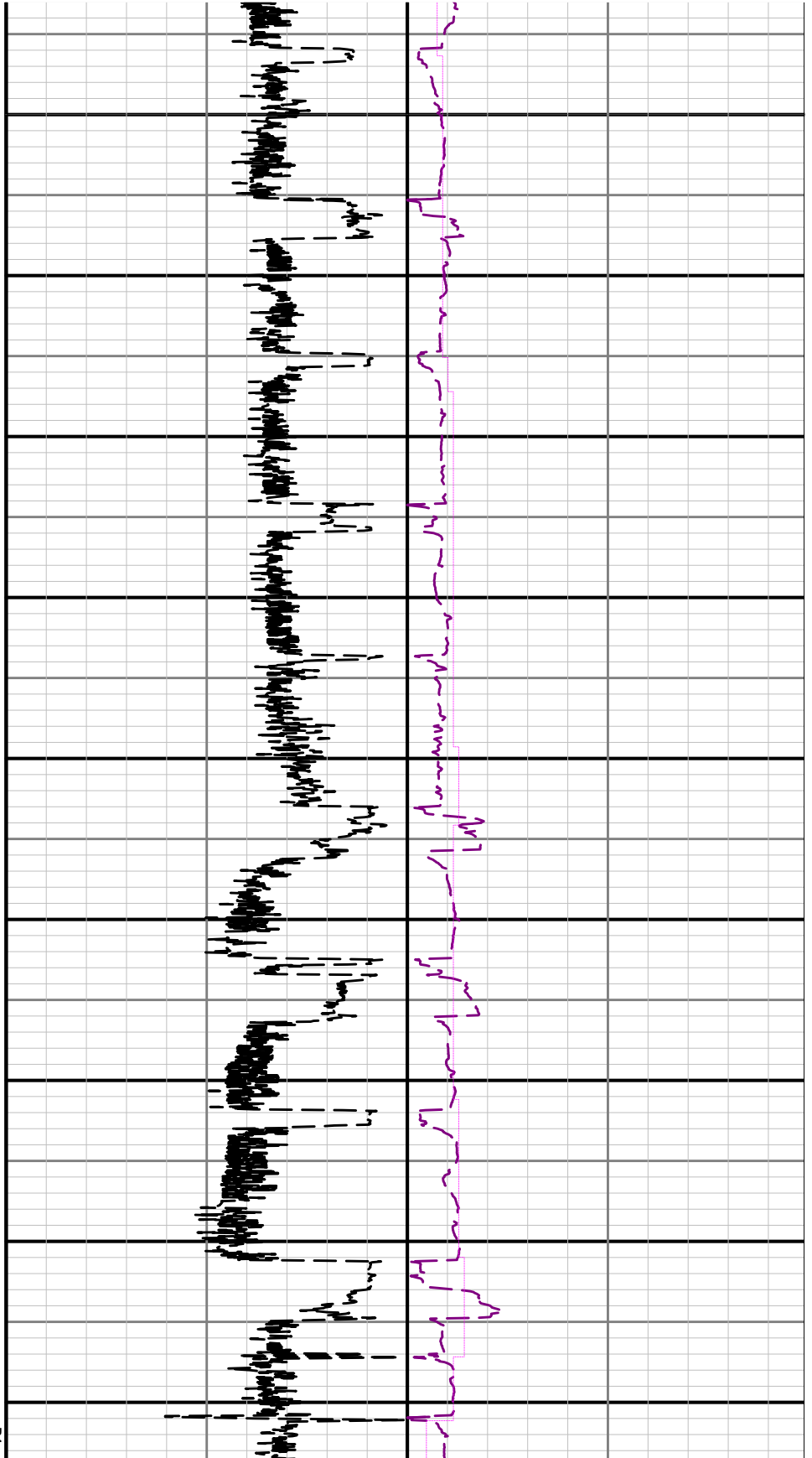


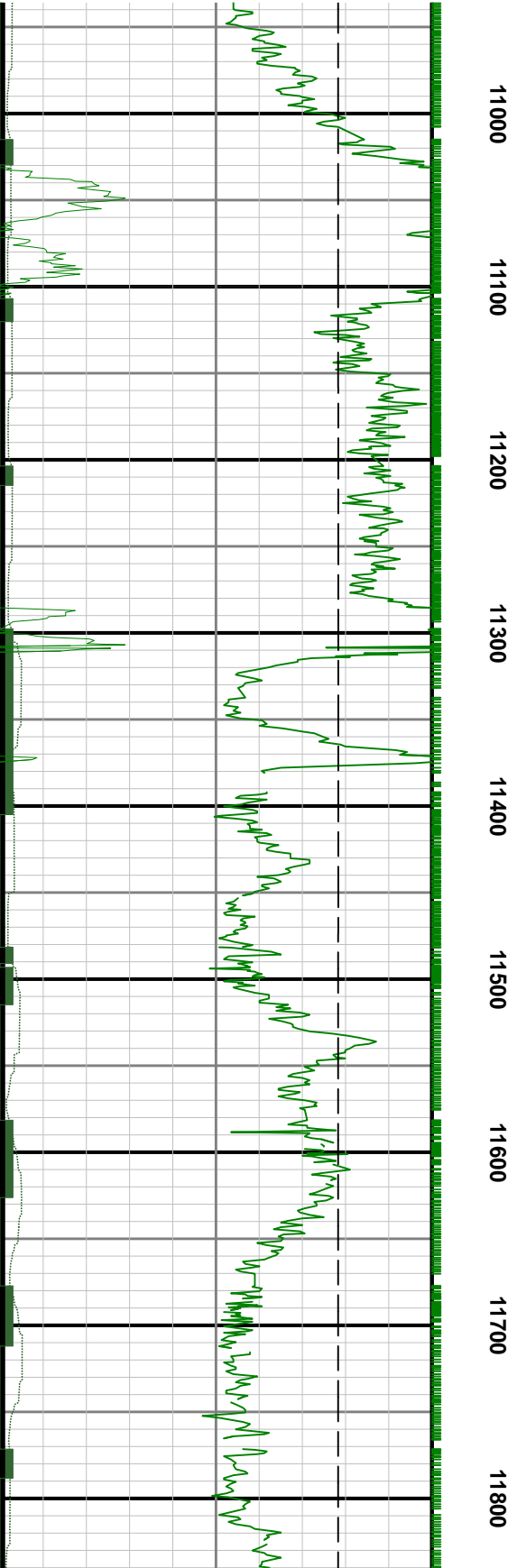
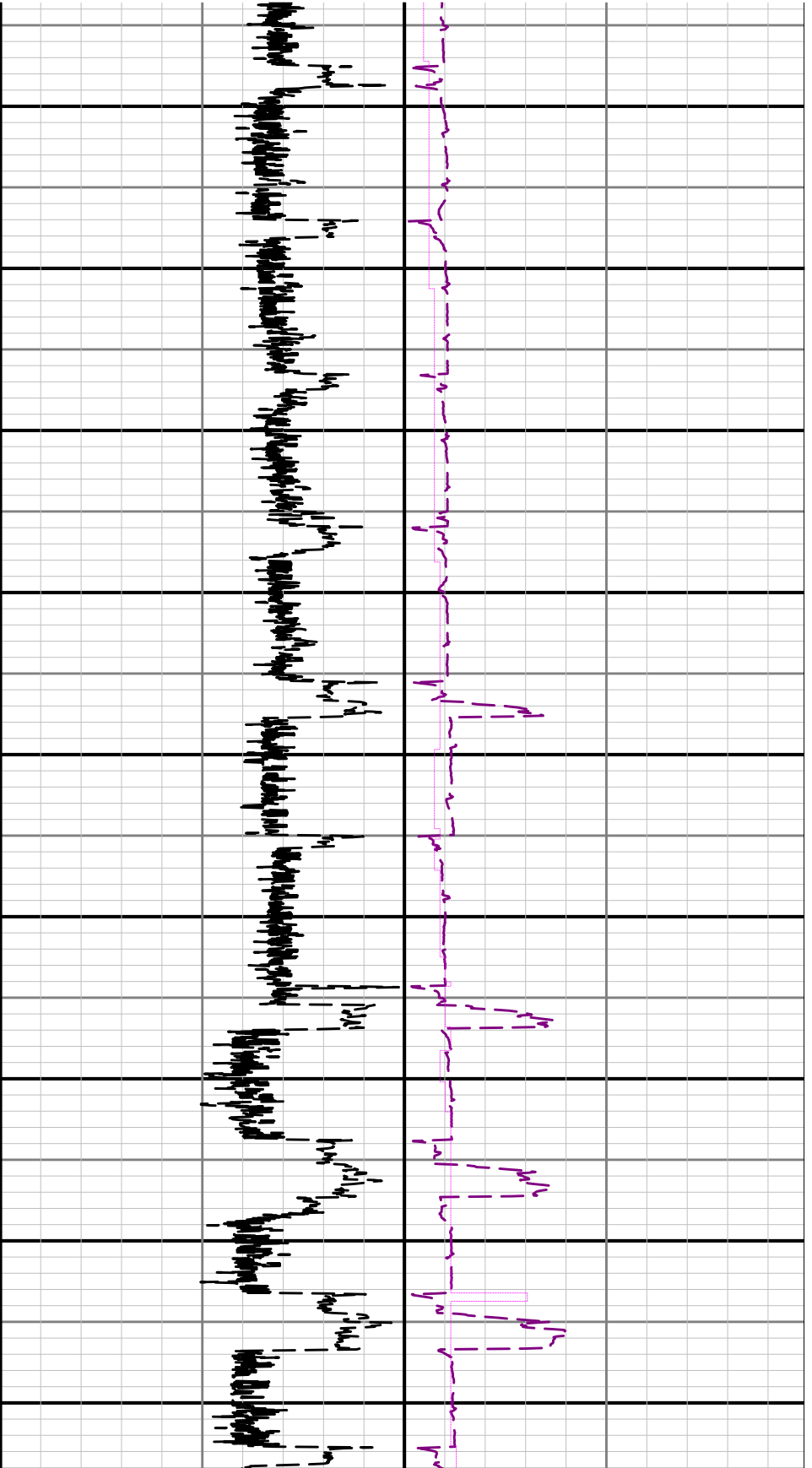


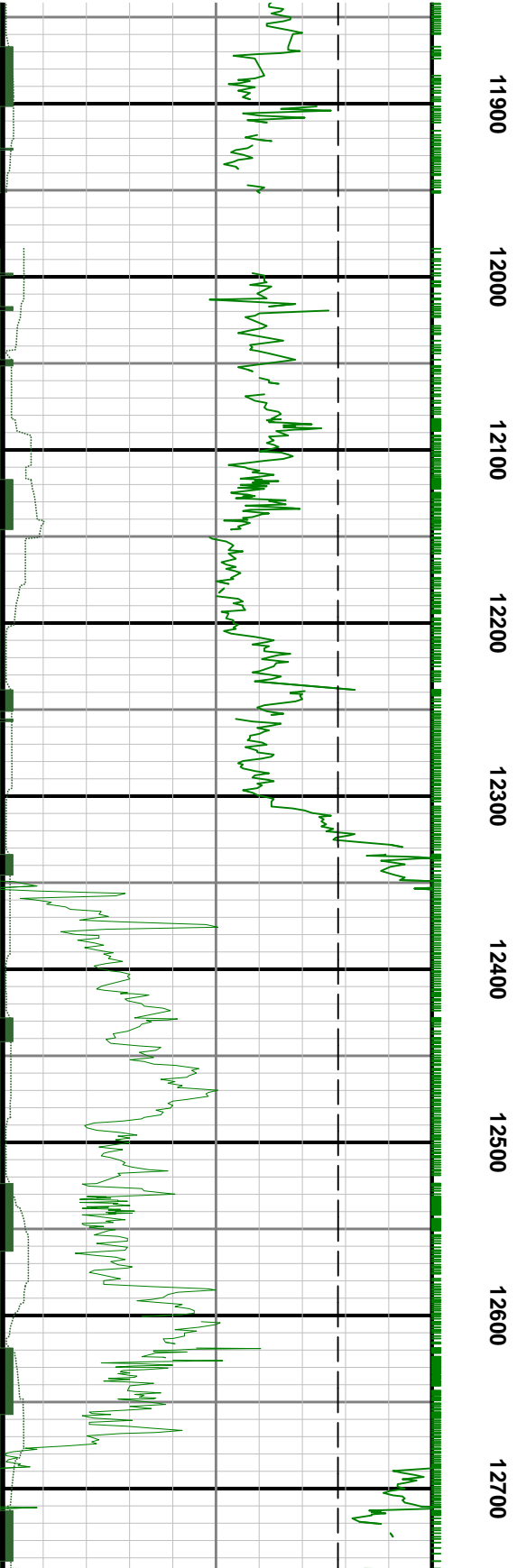
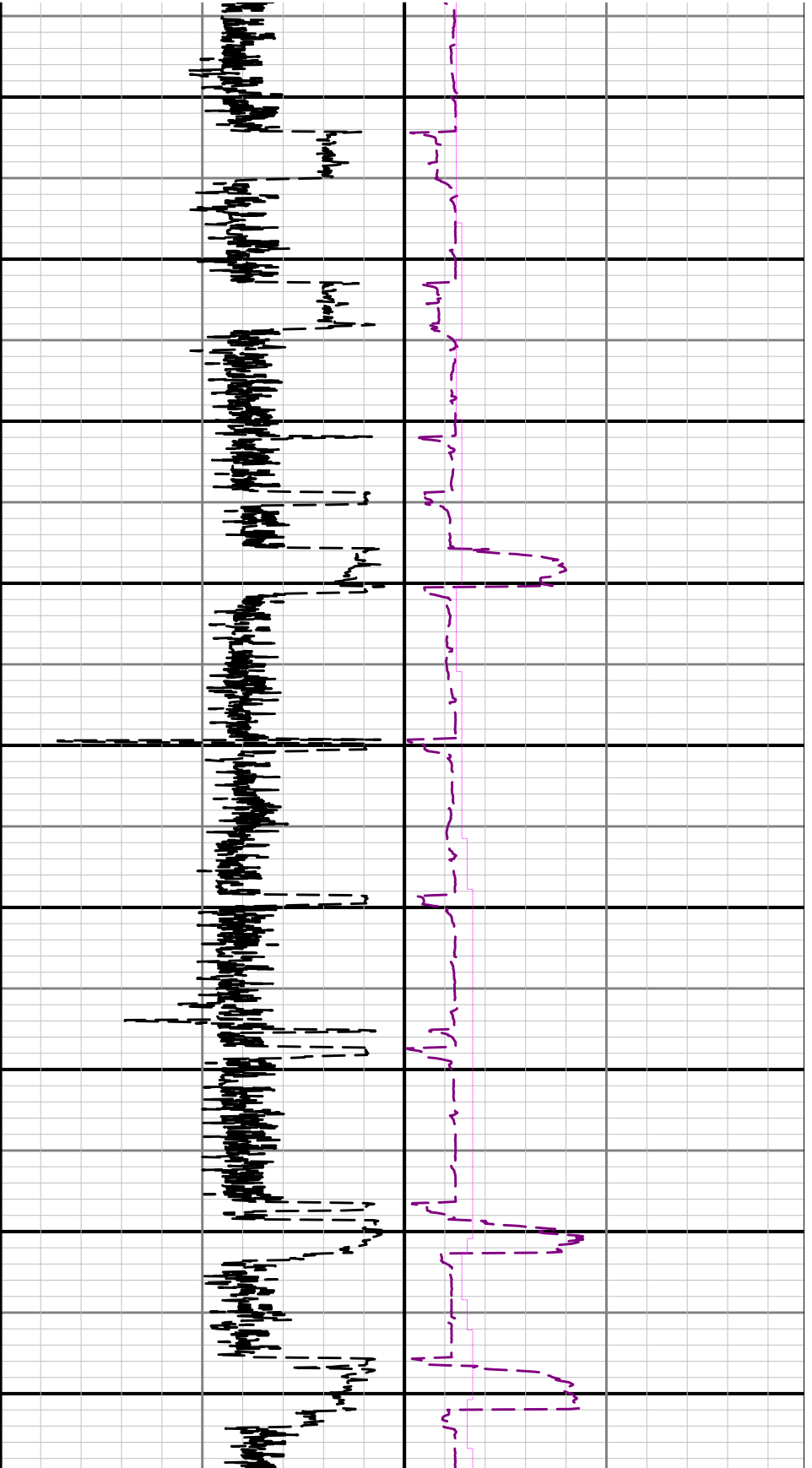


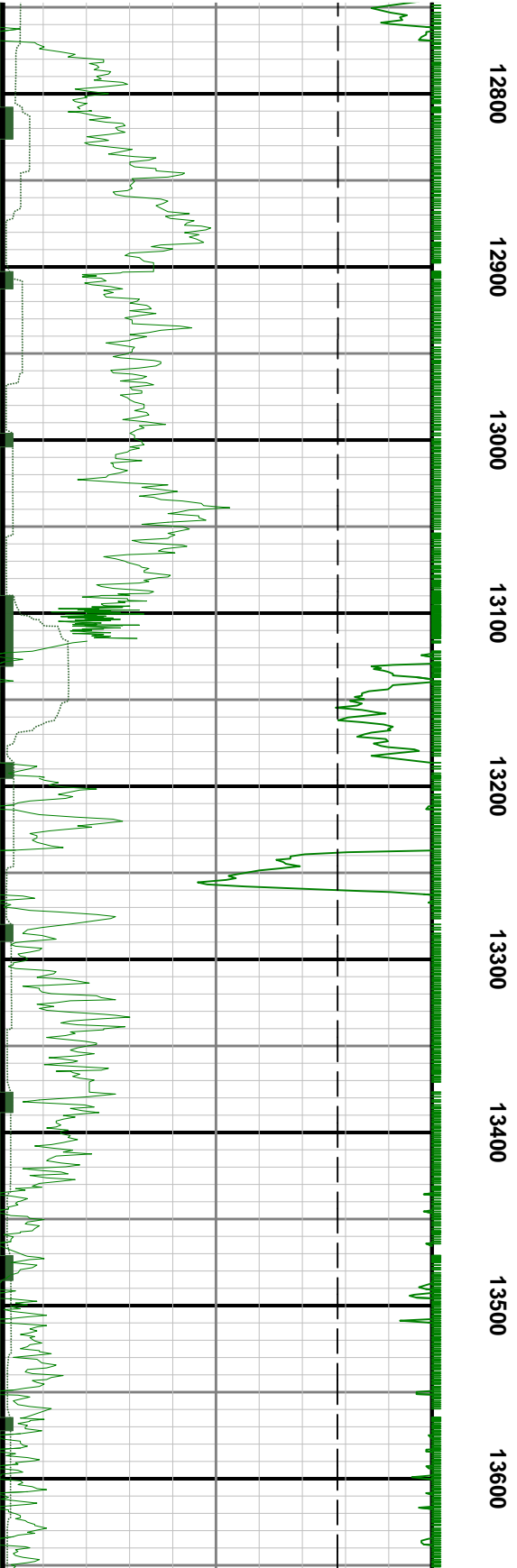
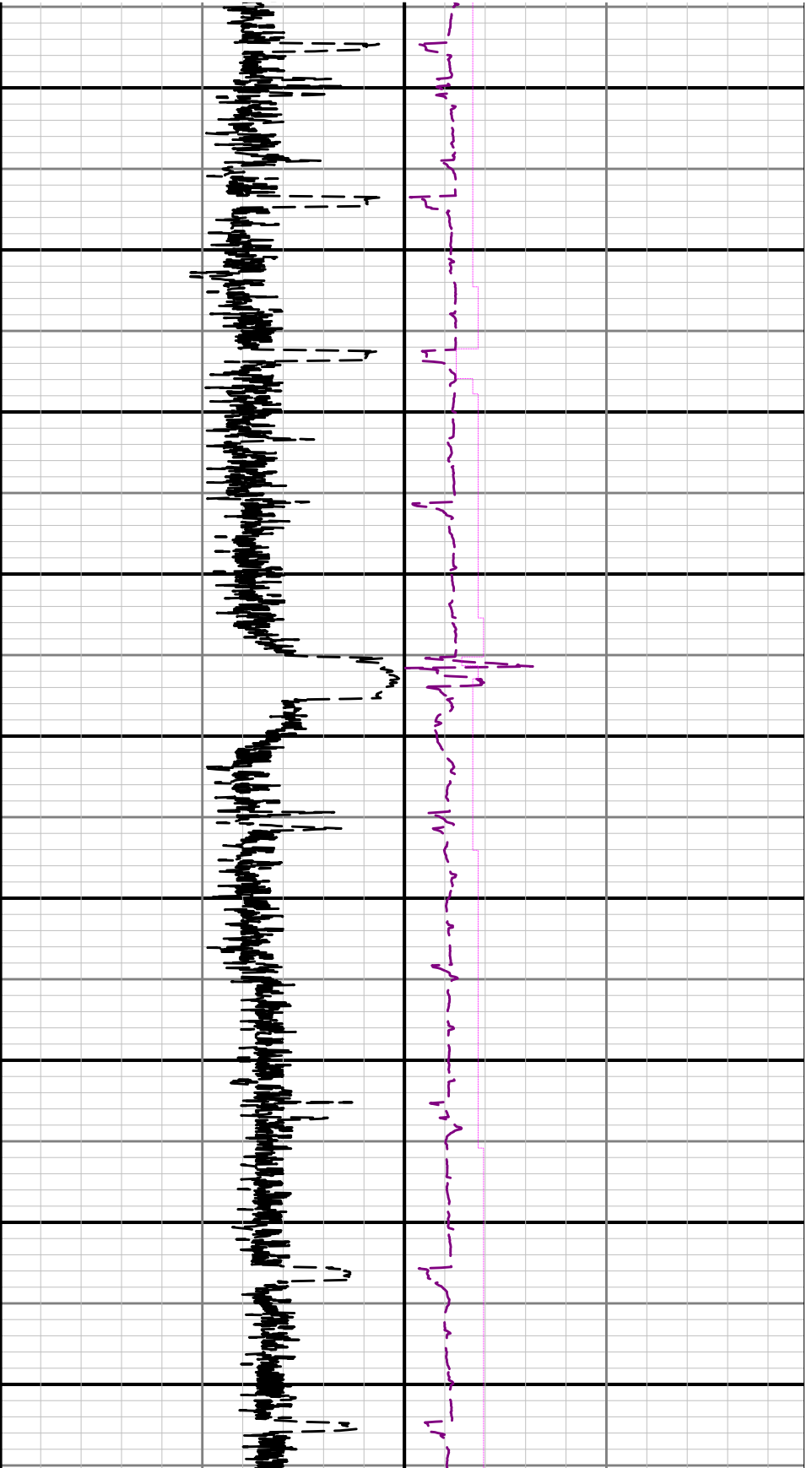


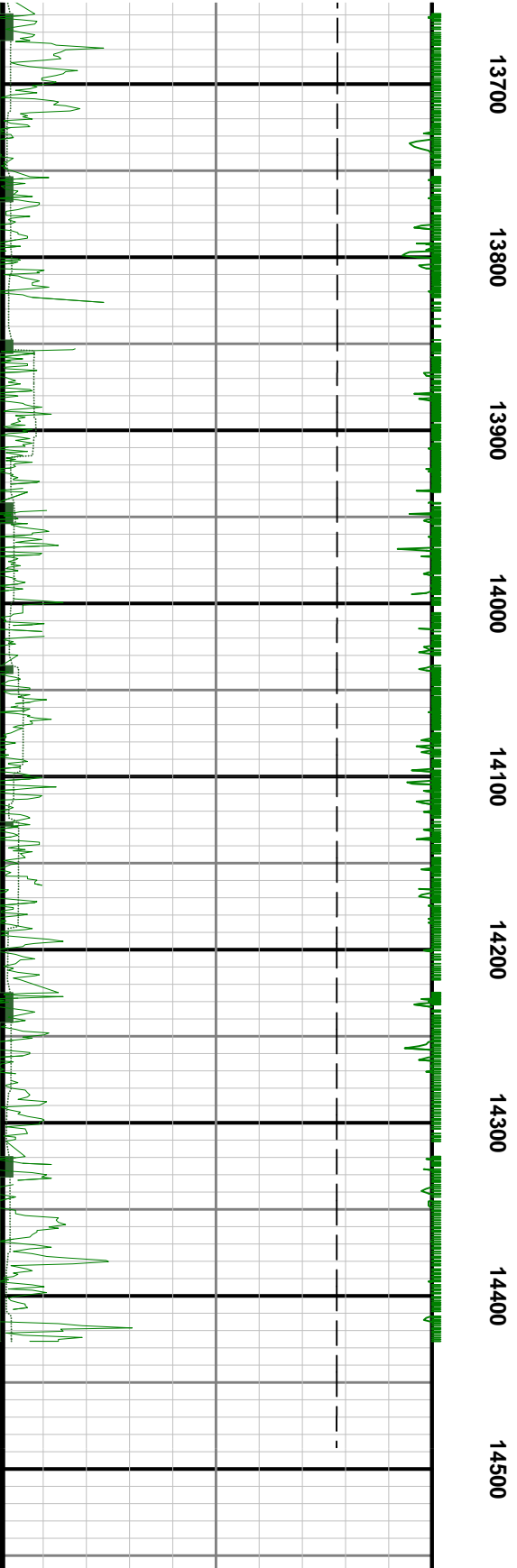
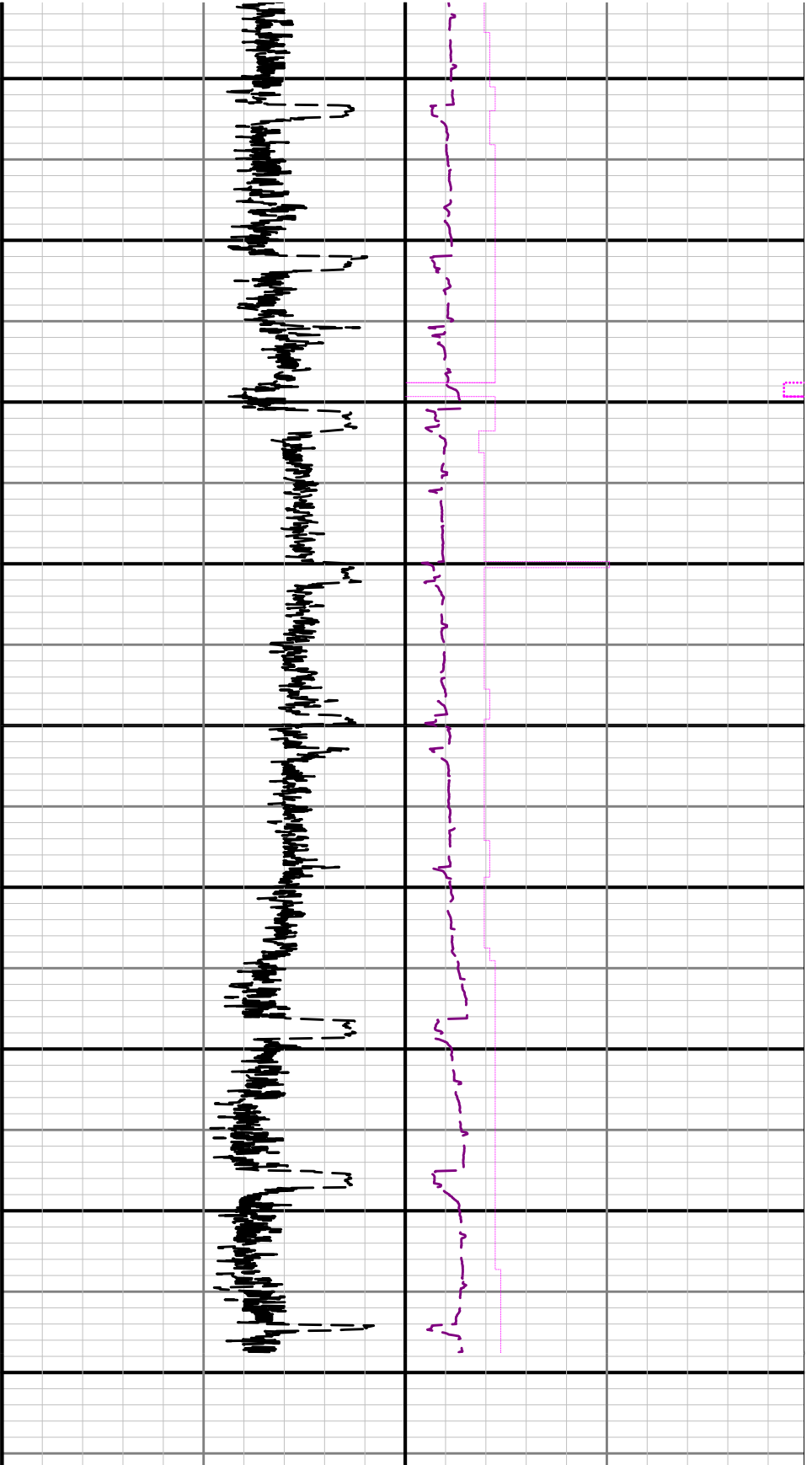


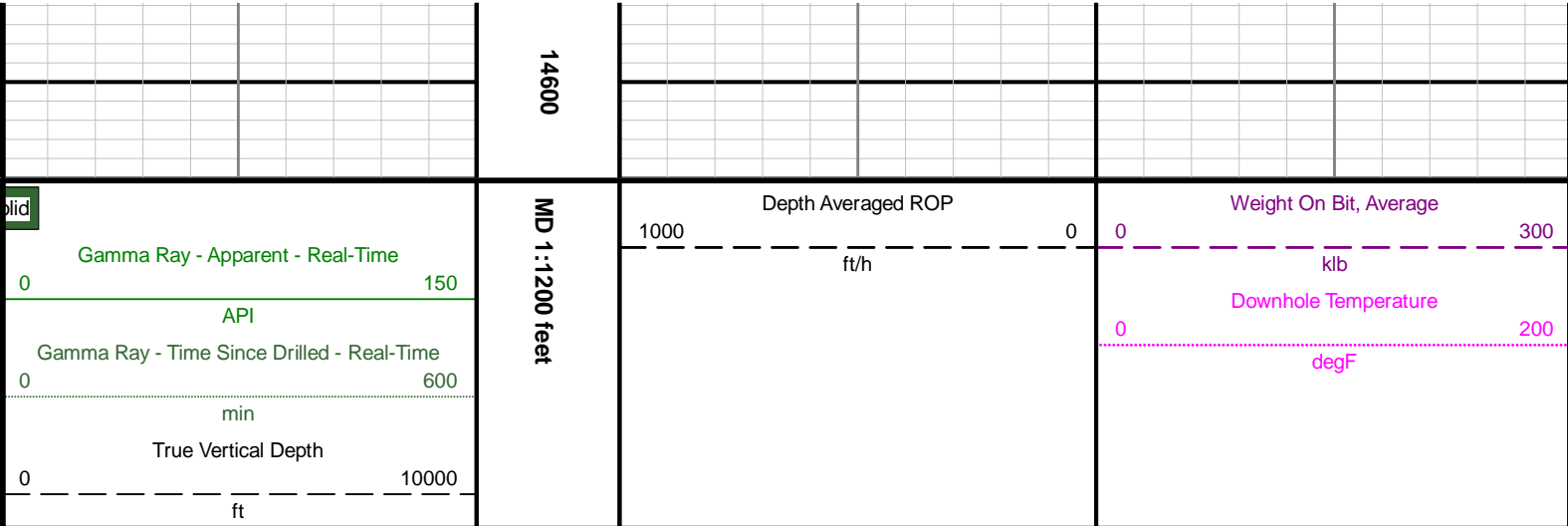













<div></div>		LWD REALTIME LOG - 8.500" SECTION						
		Drilling Dynamics Gamma Ray						
Scale:	1:1200 MD	Company: ConocoPhillips						
		Well: PROSPER FARMS 4-65-2-1-4AH						
Depth Reference:	Driller's Depth	Field: N/A						
		County: Arapahoe			Country: United States			
		State: Colorado						
Status:	Field Print	Surface Location:				Other Services:		
		Latitude: 40° 41' 11" N Longitude: 104° 07' 11" W				N/A		
API:	05005072490000							
Job ID:	8514724	SEC:	2	TWN:	4S	RGE:	65W	
						Elevations:		
Permanent Datum (P.D.): Ground Level		Elevation:	5632.00 ft	Interval:	2198.00 ft - 12844.62 ft		Elev. KB:	N/A
Log Measured From: Rig Floor		Above P.D.	26.25 ft	Created:	2017-06-20 13:35:06		Elev. DF:	5658.25 ft
							Elev. GL:	5632.00 ft