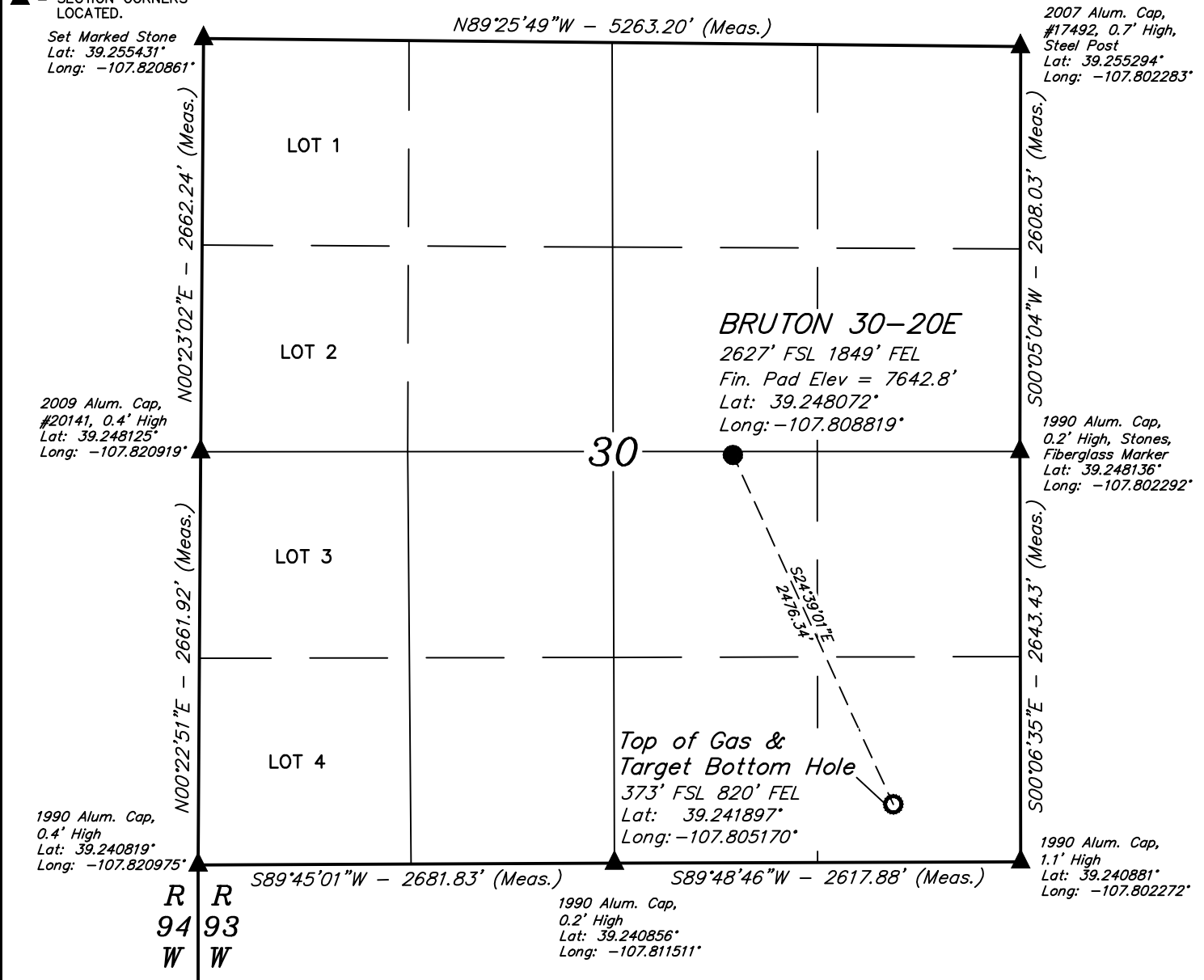


LEGEND:

- = PROPOSED WELLHEAD.
 ○ = TOP OF GAS & TARGET BOTTOM HOLE.
 ▲ = SECTION CORNERS LOCATED.

T9S, R93W, 6th P.M.

**NOTE DISTANCE TO NEAREST:**

BUILDING: OVER A MILE
BUILDING UNIT: OVER A MILE
HOB: OVER A MILE
DOAA: OVER A MILE
PUBLIC ROAD: OVER A MILE
ABOVE GROUND UTILITY: N08°E 4715'
RAILROAD: OVER A MILE
PROPERTY LINE: S58°W 2474'

PDOP = 1.5

NOTE:

- 1.) All latitudes and longitudes are given in NAD 83 coordinates.
- 2.) Distances to nearest section lines are measured perpendicularly.

CERTIFICATE
 THIS IS TO CERTIFY THAT THE ABOVE PLAT WAS PREPARED FROM FIELD NOTES OF ACTUAL SURVEYS MADE BY ME OR UNDER MY SUPERVISION AND THAT THE SAME ARE TRUE AND CORRECT TO THE BEST OF MY KNOWLEDGE AND BELIEF.

REGISTERED LAND SURVEYOR
 REGISTRATION NO. 38130
 STATE OF COLORADO 06-28-17

**BASIS OF BEARINGS**

BASIS OF BEARINGS IS A G.P.S. OBSERVATION

BASIS OF ELEVATION

BENCH MARK (19 RDS) LOCATED IN THE SE 1/4 OF SECTION 16, T9S, R93W, 6th P.M., TAKEN FROM THE SOUTH MAMM PEAK, QUADRANGLE, COLORADO, 7.5 MINUTE QUAD. (TOPOGRAPHIC MAP) PUBLISHED BY THE UNITED STATES DEPARTMENT OF THE INTERIOR, GEOLOGICAL SURVEY. SAID ELEVATION IS MARKED AS BEING 7252 FEET.

**LARAMIE ENERGY, LLC**

BRUTON 30-20E
NW 1/4 SE 1/4, SECTION 30, T9S, R93W, 6th P.M.
MESA COUNTY, COLORADO

SURVEYED BY: BRADEN BOX, B.B.	DATE: 03-27-15
DRAWN BY: S.S.	DATE DRAWN: 06-28-17
SCALE: 1" = 1000'	

WELL LOCATION PLAT

UELS, LLC
 Corporate Office * 85 South 200 East
 Vernal, UT 84078 * (435) 789-1017