



Survey Certification

7327 West Barton Road
Casper, WY 82604
(307)-472-6621 Fax (307) 472-5439

Operator	Synergy Resources Corp.
Well Name & No.	Fagerberg 36N-7B-M
API #	05-123-41853
County & State	Weld County, CO
SDI Job No.	352773
Rig	PD 462
Survey Date	5-Apr-2016

I, Robert Scott, having personal knowledge of all the facts, hereby certify that the attached directional survey run from a measured depth of 0 feet to a measured depth of 15,322 feet is true and correct as determined from all available records.

A handwritten signature in blue ink that reads 'Robert H. Scott II'.

Signature

7-Apr-2016

Date

Robert H. Scott II

Rockies Region Well Planner
Scientific Drilling - Rocky Mountain District



Synergy Resources Corp.

Weld County, CO NAD 83
SRC Fagerberg 33-12 Pad
Fagerberg 36N-7B-M

OH

Design: OH

Standard Survey Report

06 April, 2016



Project: Weld County, CO NAD 83
Site: SRC Fagerberg 33-12 Pad
Well: Fagerberg 36N-7B-M
Wellbore: OH
Design: OH

WELL DETAILS: Fagerberg 36N-7B-M

		GL 4800 & KB 20 @ 4820.00ft (PD 462) 4800.00			
+N/-S	+E/-W	Northing	Easting	Latitude	Longitude
0.00	0.00	1425407.90	3212990.06	40.4986210	-104.7341290

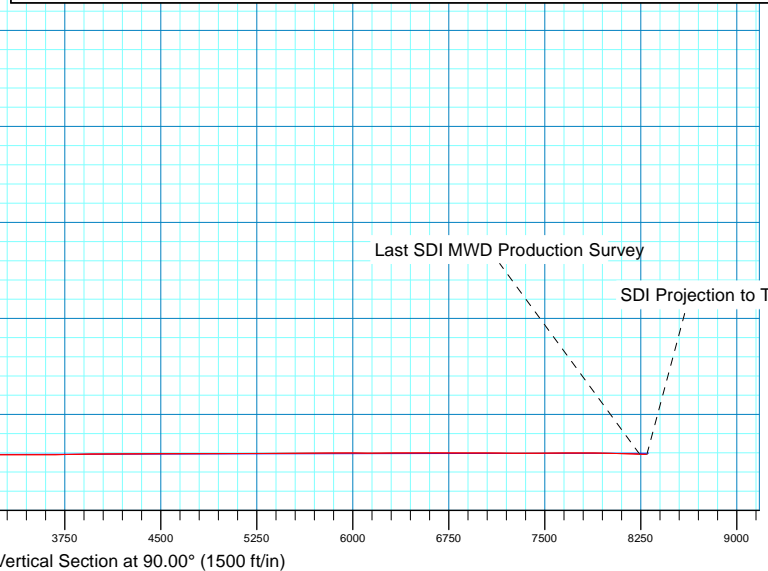
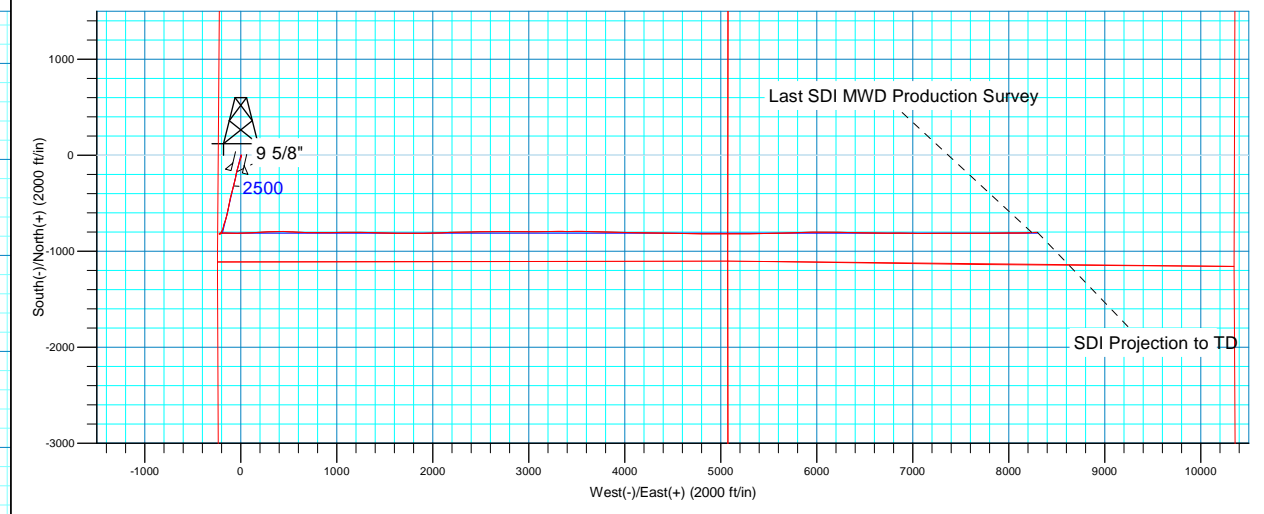
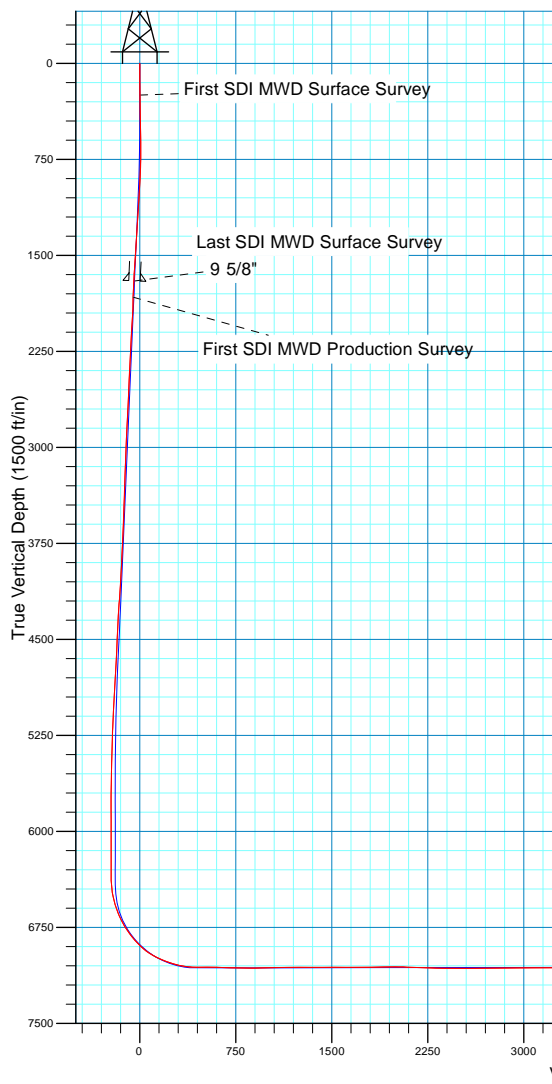
PROJECT DETAILS: Weld County, CO NAD 83

Geodetic System: US State Plane 1983
Datum: North American Datum 1983
Ellipsoid: GRS 1980
Zone: Colorado Northern Zone
System Datum: Mean Sea Level
Local North: True



Azimuths to True North
Magnetic North: 8.49°

Magnetic Field
Strength: 52600.5nT
Dip Angle: 67.03°
Date: 2/17/2016
Model: BGGM2015



Company:	Synergy Resources Corp.	Local Co-ordinate Reference:	Well Fagerberg 36N-7B-M
Project:	Weld County, CO NAD 83	TVD Reference:	GL 4800 & KB 20 @ 4820.00ft (PD 462)
Site:	SRC Fagerberg 33-12 Pad	MD Reference:	GL 4800 & KB 20 @ 4820.00ft (PD 462)
Well:	Fagerberg 36N-7B-M	North Reference:	True
Wellbore:	OH	Survey Calculation Method:	Minimum Curvature
Design:	OH	Database:	Casper District

Project	Weld County, CO NAD 83		
Map System:	US State Plane 1983	System Datum:	Mean Sea Level
Geo Datum:	North American Datum 1983		
Map Zone:	Colorado Northern Zone		

Site		SRC Fagerberg 33-12 Pad, SECTION 12 T6N R66W			
Site Position:		Northing:	1,425,367.83 usft	Latitude:	40.4985110
From:	Lat/Long	Easting:	3,212,990.12 usft	Longitude:	-104.7341300
Position Uncertainty:	3.28 ft	Slot Radius:	13.200 in	Grid Convergence:	0.49 °

Well		Fagerberg 36N-7B-M, 1111 FSL 235 FWL				
Well Position	+N/-S	0.00 ft	Northing:	1,425,407.90 usft	Latitude:	40.4986210
	+E/-W	0.00 ft	Easting:	3,212,990.06 usft	Longitude:	-104.7341290
Position Uncertainty		3.28 ft	Wellhead Elevation:	0.00 ft	Ground Level:	4,800.00 ft

Wellbore	OH				
Magnetics	Model Name	Sample Date	Declination (°)	Dip Angle (°)	Field Strength (nT)
	BGGM2015	2/17/2016	8.49	67.03	52,601

Design	OH				
Audit Notes:					
Version:	1.0	Phase:	ACTUAL	Tie On Depth:	0.00
Vertical Section:	Depth From (TVD) (ft)	+N/-S (ft)	+E/-W (ft)	Direction (°)	
	0.00	0.00	0.00	90.00	

Survey Program	Date	4/6/2016			
From (ft)	To (ft)	Survey (Wellbore)	Tool Name	Description	
249.00	1,663.00	Survey #1 Surface (OH)	SDI MWD	SDI MWD - Standard ver 1.0.1	
1,850.00	15,379.00	Survey #2 Production (OH)	SDI MWD	SDI MWD - Standard ver 1.0.1	

Survey										
Measured Depth (ft)	Inclination (°)	Azimuth (°)	Vertical Depth (ft)	+N/-S (ft)	+E/-W (ft)	Vertical Section (ft)	Dogleg Rate (°/100ft)	Build Rate (°/100ft)	Turn Rate (°/100ft)	
0.00	0.00	0.00	0.00	0.00	0.00	0.00	0.00	0.00	0.00	
249.00	1.07	37.71	248.99	1.84	1.42	1.42	0.43	0.43	0.00	
First SDI MWD Surface Survey										
436.00	1.53	79.18	435.94	3.69	4.94	4.94	0.54	0.25	22.18	
528.00	1.03	125.08	527.92	3.44	6.83	6.83	1.19	-0.54	49.89	
622.00	1.58	168.96	621.90	1.69	7.76	7.76	1.17	0.59	46.68	
717.00	3.27	188.95	716.81	-2.28	7.59	7.59	1.96	1.78	21.04	
811.00	5.78	193.78	810.51	-9.52	6.05	6.05	2.70	2.67	5.14	
904.00	8.31	199.92	902.80	-20.39	2.64	2.64	2.83	2.72	6.60	
999.00	11.21	198.81	996.42	-35.59	-2.67	-2.67	3.06	3.05	-1.17	

Company:	Synergy Resources Corp.	Local Co-ordinate Reference:	Well Fagerberg 36N-7B-M
Project:	Weld County, CO NAD 83	TVD Reference:	GL 4800 & KB 20 @ 4820.00ft (PD 462)
Site:	SRC Fagerberg 33-12 Pad	MD Reference:	GL 4800 & KB 20 @ 4820.00ft (PD 462)
Well:	Fagerberg 36N-7B-M	North Reference:	True
Wellbore:	OH	Survey Calculation Method:	Minimum Curvature
Design:	OH	Database:	Casper District

Survey									
Measured Depth (ft)	Inclination (°)	Azimuth (°)	Vertical Depth (ft)	+N/-S (ft)	+E/-W (ft)	Vertical Section (ft)	Dogleg Rate (°/100ft)	Build Rate (°/100ft)	Turn Rate (°/100ft)
1,094.00	11.76	199.43	1,089.51	-53.46	-8.87	-8.87	0.59	0.58	0.65
1,189.00	11.60	195.39	1,182.55	-71.80	-14.63	-14.63	0.88	-0.17	-4.25
1,284.00	12.54	194.42	1,275.45	-91.00	-19.73	-19.73	1.01	0.99	-1.02
1,378.00	13.35	194.87	1,367.06	-111.37	-25.06	-25.06	0.87	0.86	0.48
1,472.00	13.45	195.94	1,458.50	-132.37	-30.84	-30.84	0.28	0.11	1.14
1,568.00	14.10	198.18	1,551.74	-154.21	-37.56	-37.56	0.88	0.68	2.33
1,663.00	13.45	192.91	1,644.01	-175.98	-43.64	-43.64	1.49	-0.68	-5.55
Last SDI MWD Surface Survey									
1,850.00	13.11	188.68	1,826.01	-218.14	-51.70	-51.70	0.55	-0.18	-2.26
First SDI MWD Production Survey									
1,944.00	12.23	186.31	1,917.72	-238.58	-54.40	-54.40	1.09	-0.94	-2.52
2,036.00	12.86	197.05	2,007.54	-258.05	-58.47	-58.47	2.62	0.68	11.67
2,130.00	12.27	195.37	2,099.29	-277.69	-64.19	-64.19	0.74	-0.63	-1.79
2,224.00	11.11	195.38	2,191.34	-296.05	-69.24	-69.24	1.23	-1.23	0.01
2,318.00	10.49	195.56	2,283.67	-313.03	-73.94	-73.94	0.66	-0.66	0.19
2,412.00	10.77	194.74	2,376.06	-329.76	-78.47	-78.47	0.34	0.30	-0.87
2,505.00	9.28	195.05	2,467.63	-345.41	-82.62	-82.62	1.60	-1.60	0.33
2,598.00	10.84	192.63	2,559.20	-361.19	-86.48	-86.48	1.74	1.68	-2.60
2,693.00	9.55	191.76	2,652.70	-377.62	-90.04	-90.04	1.37	-1.36	-0.92
2,788.00	11.45	195.73	2,746.11	-394.41	-94.21	-94.21	2.14	2.00	4.18
2,884.00	10.79	195.04	2,840.30	-412.26	-99.12	-99.12	0.70	-0.69	-0.72
2,978.00	10.77	195.19	2,932.65	-429.24	-103.71	-103.71	0.04	-0.02	0.16
3,072.00	8.78	194.94	3,025.28	-444.64	-107.86	-107.86	2.12	-2.12	-0.27
3,166.00	10.79	193.82	3,117.90	-460.12	-111.81	-111.81	2.15	2.14	-1.19
3,259.00	11.74	188.23	3,209.11	-477.94	-115.24	-115.24	1.56	1.02	-6.01
3,353.00	9.74	188.09	3,301.46	-495.28	-117.73	-117.73	2.13	-2.13	-0.15
3,446.00	10.16	189.86	3,393.06	-511.15	-120.24	-120.24	0.56	0.45	1.90
3,539.00	10.60	190.35	3,484.54	-527.64	-123.18	-123.18	0.48	0.47	0.53
3,633.00	10.94	190.72	3,576.89	-544.91	-126.40	-126.40	0.37	0.36	0.39
3,727.00	10.49	194.39	3,669.25	-561.97	-130.18	-130.18	0.87	-0.48	3.90
3,822.00	10.96	193.17	3,762.59	-579.14	-134.39	-134.39	0.55	0.49	-1.28
3,917.00	13.26	193.57	3,855.47	-598.52	-139.00	-139.00	2.42	2.42	0.42
4,010.00	14.34	191.67	3,945.78	-620.17	-143.84	-143.84	1.26	1.16	-2.04
4,104.00	13.74	195.75	4,036.98	-642.32	-149.22	-149.22	1.23	-0.64	4.34
4,199.00	13.34	195.74	4,129.34	-663.72	-155.26	-155.26	0.42	-0.42	-0.01
4,294.00	10.90	200.49	4,222.21	-682.69	-161.37	-161.37	2.77	-2.57	5.00
4,389.00	9.83	199.39	4,315.66	-698.75	-167.21	-167.21	1.15	-1.13	-1.16
4,484.00	9.73	197.34	4,409.28	-714.07	-172.30	-172.30	0.38	-0.11	-2.16
4,577.00	10.52	192.22	4,500.83	-729.86	-176.44	-176.44	1.29	0.85	-5.51
4,672.00	10.20	192.25	4,594.29	-746.56	-180.06	-180.06	0.34	-0.34	0.03
4,768.00	9.63	201.50	4,688.86	-762.34	-184.80	-184.80	1.76	-0.59	9.64
4,862.00	8.31	200.75	4,781.71	-776.01	-190.09	-190.09	1.41	-1.40	-0.80
4,957.00	7.58	208.25	4,875.80	-787.95	-195.49	-195.49	1.33	-0.77	7.89

Company:	Synergy Resources Corp.	Local Co-ordinate Reference:	Well Fagerberg 36N-7B-M
Project:	Weld County, CO NAD 83	TVD Reference:	GL 4800 & KB 20 @ 4820.00ft (PD 462)
Site:	SRC Fagerberg 33-12 Pad	MD Reference:	GL 4800 & KB 20 @ 4820.00ft (PD 462)
Well:	Fagerberg 36N-7B-M	North Reference:	True
Wellbore:	OH	Survey Calculation Method:	Minimum Curvature
Design:	OH	Database:	Casper District

Survey										
Measured Depth (ft)	Inclination (°)	Azimuth (°)	Vertical Depth (ft)	+N/-S (ft)	+E/-W (ft)	Vertical Section (ft)	Dogleg Rate (°/100ft)	Build Rate (°/100ft)	Turn Rate (°/100ft)	
5,051.00	6.48	204.46	4,969.09	-798.24	-200.62	-200.62	1.27	-1.17	-4.03	
5,146.00	6.20	204.65	5,063.51	-807.78	-204.98	-204.98	0.30	-0.29	0.20	
5,241.00	4.74	215.04	5,158.07	-815.66	-209.37	-209.37	1.85	-1.54	10.94	
5,335.00	2.33	233.41	5,251.89	-819.98	-213.14	-213.14	2.80	-2.56	19.54	
5,429.00	1.61	266.84	5,345.84	-821.19	-215.99	-215.99	1.41	-0.77	35.56	
5,522.00	1.32	255.03	5,438.81	-821.54	-218.33	-218.33	0.45	-0.31	-12.70	
5,617.00	1.08	286.44	5,533.79	-821.57	-220.25	-220.25	0.73	-0.25	33.06	
5,711.00	1.46	274.81	5,627.76	-821.21	-222.29	-222.29	0.49	0.40	-12.37	
5,806.00	1.25	327.75	5,722.74	-820.24	-224.05	-224.05	1.29	-0.22	55.73	
5,900.00	0.85	36.81	5,816.73	-818.81	-224.18	-224.18	1.31	-0.43	73.47	
5,995.00	0.69	39.31	5,911.72	-817.80	-223.39	-223.39	0.17	-0.17	2.63	
6,089.00	0.54	13.64	6,005.71	-816.94	-222.93	-222.93	0.33	-0.16	-27.31	
6,183.00	0.93	330.16	6,099.71	-815.84	-223.20	-223.20	0.70	0.41	-46.26	
6,277.00	0.82	352.24	6,193.70	-814.52	-223.68	-223.68	0.37	-0.12	23.49	
6,372.00	0.42	11.52	6,288.69	-813.50	-223.70	-223.70	0.47	-0.42	20.29	
6,468.00	0.61	6.93	6,384.69	-812.65	-223.57	-223.57	0.20	0.20	-4.78	
6,562.00	10.61	86.93	6,478.14	-811.69	-214.84	-214.84	11.19	10.64	85.11	
6,656.00	16.60	84.82	6,569.46	-810.01	-192.80	-192.80	6.39	6.37	-2.24	
6,751.00	22.81	92.43	6,658.87	-809.56	-160.86	-160.86	7.06	6.54	8.01	
6,845.00	31.36	91.16	6,742.49	-810.83	-118.12	-118.12	9.12	9.10	-1.35	
6,939.00	38.91	86.62	6,819.32	-809.59	-64.11	-64.11	8.49	8.03	-4.83	
7,034.00	45.00	94.20	6,889.98	-810.29	-0.72	-0.72	8.33	6.41	7.98	
7,129.00	56.26	86.60	6,950.20	-810.41	72.50	72.50	13.35	11.85	-8.00	
7,224.00	66.43	85.79	6,995.69	-804.85	155.57	155.57	10.73	10.71	-0.85	
7,319.00	71.81	86.28	7,029.54	-798.72	244.09	244.09	5.68	5.66	0.52	
7,414.00	80.31	88.82	7,052.41	-794.82	336.11	336.11	9.32	8.95	2.67	
7,508.00	88.12	90.68	7,061.88	-794.43	429.56	429.56	8.54	8.31	1.98	
7,603.00	91.74	92.23	7,061.99	-796.84	524.51	524.51	4.15	3.81	1.63	
7,698.00	87.52	93.32	7,062.61	-801.44	619.37	619.37	4.59	-4.44	1.15	
7,793.00	88.99	91.39	7,065.50	-805.34	714.24	714.24	2.55	1.55	-2.03	
7,887.00	88.59	89.81	7,067.48	-806.32	808.21	808.21	1.73	-0.43	-1.68	
7,983.00	90.30	89.50	7,068.41	-805.74	904.20	904.20	1.81	1.78	-0.32	
8,040.00	91.51	88.88	7,067.51	-804.94	961.19	961.19	2.39	2.12	-1.09	
8,135.00	91.54	88.52	7,064.98	-802.78	1,056.13	1,056.13	0.38	0.03	-0.38	
8,229.00	91.18	90.62	7,062.75	-802.08	1,150.09	1,150.09	2.27	-0.38	2.23	
8,322.00	89.93	91.36	7,061.85	-803.69	1,243.07	1,243.07	1.56	-1.34	0.80	
8,414.00	89.33	90.87	7,062.45	-805.48	1,335.05	1,335.05	0.84	-0.65	-0.53	
8,510.00	90.87	91.59	7,062.28	-807.54	1,431.03	1,431.03	1.77	1.60	0.75	
8,604.00	89.66	92.46	7,061.84	-810.86	1,524.97	1,524.97	1.59	-1.29	0.93	
8,698.00	89.16	89.73	7,062.81	-812.65	1,618.93	1,618.93	2.95	-0.53	-2.90	
8,792.00	90.27	89.95	7,063.28	-812.39	1,712.93	1,712.93	1.20	1.18	0.23	
8,886.00	91.28	91.08	7,062.01	-813.24	1,806.92	1,806.92	1.61	1.07	1.20	
8,982.00	91.38	89.28	7,059.78	-813.54	1,902.89	1,902.89	1.88	0.10	-1.88	
9,075.00	89.60	88.59	7,058.98	-811.81	1,995.86	1,995.86	2.05	-1.91	-0.74	

Company:	Synergy Resources Corp.	Local Co-ordinate Reference:	Well Fagerberg 36N-7B-M
Project:	Weld County, CO NAD 83	TVD Reference:	GL 4800 & KB 20 @ 4820.00ft (PD 462)
Site:	SRC Fagerberg 33-12 Pad	MD Reference:	GL 4800 & KB 20 @ 4820.00ft (PD 462)
Well:	Fagerberg 36N-7B-M	North Reference:	True
Wellbore:	OH	Survey Calculation Method:	Minimum Curvature
Design:	OH	Database:	Casper District

Survey									
Measured Depth (ft)	Inclination (°)	Azimuth (°)	Vertical Depth (ft)	+N/-S (ft)	+E/-W (ft)	Vertical Section (ft)	Dogleg Rate (°/100ft)	Build Rate (°/100ft)	Turn Rate (°/100ft)
9,168.00	87.75	87.41	7,061.14	-808.57	2,088.77	2,088.77	2.36	-1.99	-1.27
9,261.00	88.39	86.53	7,064.27	-803.65	2,181.59	2,181.59	1.17	0.69	-0.95
9,355.00	87.92	89.10	7,067.29	-800.07	2,275.47	2,275.47	2.78	-0.50	2.73
9,448.00	89.16	88.86	7,069.66	-798.42	2,368.42	2,368.42	1.36	1.33	-0.26
9,542.00	90.40	87.86	7,070.02	-795.73	2,462.38	2,462.38	1.69	1.32	-1.06
9,636.00	89.46	90.68	7,070.14	-794.53	2,556.36	2,556.36	3.16	-1.00	3.00
9,731.00	90.34	89.63	7,070.31	-794.78	2,651.36	2,651.36	1.44	0.93	-1.11
9,823.00	90.94	91.05	7,069.28	-795.33	2,743.35	2,743.35	1.68	0.65	1.54
9,917.00	89.93	91.02	7,068.56	-797.03	2,837.33	2,837.33	1.07	-1.07	-0.03
10,012.00	91.07	89.03	7,067.74	-797.07	2,932.32	2,932.32	2.41	1.20	-2.09
10,105.00	89.76	88.51	7,067.06	-795.07	3,025.29	3,025.29	1.52	-1.41	-0.56
10,198.00	89.97	89.95	7,067.28	-793.82	3,118.28	3,118.28	1.56	0.23	1.55
10,292.00	91.48	90.26	7,066.09	-794.00	3,212.27	3,212.27	1.64	1.61	0.33
10,386.00	89.43	89.58	7,065.34	-793.86	3,306.26	3,306.26	2.30	-2.18	-0.72
10,479.00	89.53	90.59	7,066.19	-794.00	3,399.25	3,399.25	1.09	0.11	1.09
10,572.00	90.10	89.25	7,066.49	-793.87	3,492.25	3,492.25	1.57	0.61	-1.44
10,666.00	90.20	91.79	7,066.24	-794.73	3,586.24	3,586.24	2.70	0.11	2.70
10,758.00	90.84	91.38	7,065.41	-797.27	3,678.20	3,678.20	0.83	0.70	-0.45
10,852.00	92.11	89.80	7,062.99	-798.24	3,772.16	3,772.16	2.16	1.35	-1.68
10,945.00	90.54	91.98	7,060.84	-799.68	3,865.11	3,865.11	2.89	-1.69	2.34
11,040.00	90.84	91.27	7,059.69	-802.38	3,960.07	3,960.07	0.81	0.32	-0.75
11,133.00	89.60	90.82	7,059.34	-804.07	4,053.05	4,053.05	1.42	-1.33	-0.48
11,225.00	90.03	91.22	7,059.63	-805.71	4,145.03	4,145.03	0.64	0.47	0.43
11,318.00	91.17	91.14	7,058.66	-807.63	4,238.01	4,238.01	1.23	1.23	-0.09
11,412.00	90.10	92.05	7,057.62	-810.24	4,331.96	4,331.96	1.49	-1.14	0.97
11,506.00	88.86	91.21	7,058.47	-812.92	4,425.92	4,425.92	1.59	-1.32	-0.89
11,599.00	90.30	90.28	7,059.15	-814.12	4,518.91	4,518.91	1.84	1.55	-1.00
11,693.00	91.24	91.24	7,057.89	-815.37	4,612.89	4,612.89	1.43	1.00	1.02
11,786.00	89.50	90.26	7,057.29	-816.59	4,705.87	4,705.87	2.15	-1.87	-1.05
11,881.00	90.64	90.25	7,057.17	-817.01	4,800.87	4,800.87	1.20	1.20	-0.01
11,975.00	89.43	90.15	7,057.12	-817.34	4,894.87	4,894.87	1.29	-1.29	-0.11
12,070.00	90.97	90.27	7,056.78	-817.69	4,989.86	4,989.86	1.63	1.62	0.13
12,163.00	91.01	90.29	7,055.18	-818.14	5,082.85	5,082.85	0.05	0.04	0.02
12,256.00	90.30	89.71	7,054.11	-818.14	5,175.84	5,175.84	0.99	-0.76	-0.62
12,349.00	89.33	88.91	7,054.41	-817.02	5,268.83	5,268.83	1.35	-1.04	-0.86
12,442.00	90.70	89.46	7,054.39	-815.70	5,361.82	5,361.82	1.59	1.47	0.59
12,537.00	88.89	89.24	7,054.73	-814.62	5,456.81	5,456.81	1.92	-1.91	-0.23
12,631.00	90.20	88.19	7,055.48	-812.51	5,550.78	5,550.78	1.79	1.39	-1.12
12,724.00	91.27	88.99	7,054.28	-810.23	5,643.74	5,643.74	1.44	1.15	0.86
12,818.00	89.80	88.07	7,053.41	-807.81	5,737.70	5,737.70	1.84	-1.56	-0.98
12,912.00	90.97	87.95	7,052.77	-804.55	5,831.64	5,831.64	1.25	1.24	-0.13
13,006.00	90.07	88.40	7,051.92	-801.56	5,925.59	5,925.59	1.07	-0.96	0.48
13,100.00	88.73	90.54	7,052.91	-800.69	6,019.57	6,019.57	2.69	-1.43	2.28

Company:	Synergy Resources Corp.	Local Co-ordinate Reference:	Well Fagerberg 36N-7B-M
Project:	Weld County, CO NAD 83	TVD Reference:	GL 4800 & KB 20 @ 4820.00ft (PD 462)
Site:	SRC Fagerberg 33-12 Pad	MD Reference:	GL 4800 & KB 20 @ 4820.00ft (PD 462)
Well:	Fagerberg 36N-7B-M	North Reference:	True
Wellbore:	OH	Survey Calculation Method:	Minimum Curvature
Design:	OH	Database:	Casper District

Survey										
Measured Depth (ft)	Inclination (°)	Azimuth (°)	Vertical Depth (ft)	+N/-S (ft)	+E/-W (ft)	Vertical Section (ft)	Dogleg Rate (°/100ft)	Build Rate (°/100ft)	Turn Rate (°/100ft)	
13,194.00	91.01	90.16	7,053.12	-801.26	6,113.56	6,113.56	2.46	2.43	-0.40	
13,289.00	89.63	90.66	7,052.59	-801.94	6,208.56	6,208.56	1.55	-1.45	0.53	
13,381.00	90.37	91.65	7,052.59	-803.80	6,300.54	6,300.54	1.34	0.80	1.08	
13,476.00	89.73	91.02	7,052.50	-806.01	6,395.51	6,395.51	0.95	-0.67	-0.66	
13,570.00	91.14	91.28	7,051.79	-807.90	6,489.49	6,489.49	1.53	1.50	0.28	
13,665.00	90.03	91.11	7,050.82	-809.88	6,584.46	6,584.46	1.18	-1.17	-0.18	
13,757.00	88.96	90.68	7,051.63	-811.31	6,676.44	6,676.44	1.25	-1.16	-0.47	
13,851.00	90.13	89.88	7,052.38	-811.77	6,770.44	6,770.44	1.51	1.24	-0.85	
13,944.00	89.43	90.06	7,052.74	-811.72	6,863.43	6,863.43	0.78	-0.75	0.19	
14,039.00	90.87	90.90	7,052.49	-812.52	6,958.43	6,958.43	1.75	1.52	0.88	
14,134.00	89.80	91.21	7,051.93	-814.27	7,053.41	7,053.41	1.17	-1.13	0.33	
14,228.00	89.30	89.82	7,052.67	-815.11	7,147.40	7,147.40	1.57	-0.53	-1.48	
14,323.00	90.37	89.03	7,052.94	-814.16	7,242.39	7,242.39	1.40	1.13	-0.83	
14,418.00	89.40	89.99	7,053.13	-813.35	7,337.39	7,337.39	1.44	-1.02	1.01	
14,512.00	90.67	89.95	7,053.08	-813.30	7,431.38	7,431.38	1.35	1.35	-0.04	
14,606.00	89.06	90.13	7,053.30	-813.36	7,525.38	7,525.38	1.72	-1.71	0.19	
14,700.00	89.93	89.88	7,054.13	-813.37	7,619.38	7,619.38	0.96	0.93	-0.27	
14,794.00	91.75	90.19	7,052.75	-813.43	7,713.36	7,713.36	1.96	1.94	0.33	
14,889.00	90.13	89.42	7,051.19	-813.11	7,808.34	7,808.34	1.89	-1.71	-0.81	
14,984.00	88.49	89.01	7,052.33	-811.80	7,903.33	7,903.33	1.78	-1.73	-0.43	
15,078.00	89.23	88.72	7,054.20	-809.94	7,997.29	7,997.29	0.85	0.79	-0.31	
15,170.00	87.92	88.99	7,056.49	-808.11	8,089.24	8,089.24	1.45	-1.42	0.29	
15,265.00	88.36	88.76	7,059.58	-806.24	8,184.17	8,184.17	0.52	0.46	-0.24	
15,322.00	88.76	88.46	7,061.01	-804.86	8,241.14	8,241.14	0.88	0.70	-0.53	
Last SDI MWD Production Survey										
15,379.00	88.76	88.46	7,062.24	-803.33	8,298.10	8,298.10	0.00	0.00	0.00	
SDI Projection to TD										

Design Annotations					
Measured Depth (ft)	Vertical Depth (ft)	Local Coordinates			
		+N/-S (ft)	+E/-W (ft)	Comment	
249.00	248.99	1.84	1.42	First SDI MWD Surface Survey	
1,663.00	1,644.01	-175.98	-43.64	Last SDI MWD Surface Survey	
1,850.00	1,826.01	-218.14	-51.70	First SDI MWD Production Survey	
15,322.00	7,061.01	-804.86	8,241.14	Last SDI MWD Production Survey	
15,379.00	7,062.24	-803.33	8,298.10	SDI Projection to TD	

Checked By: _____	Approved By: _____	Date: _____
-------------------	--------------------	-------------