

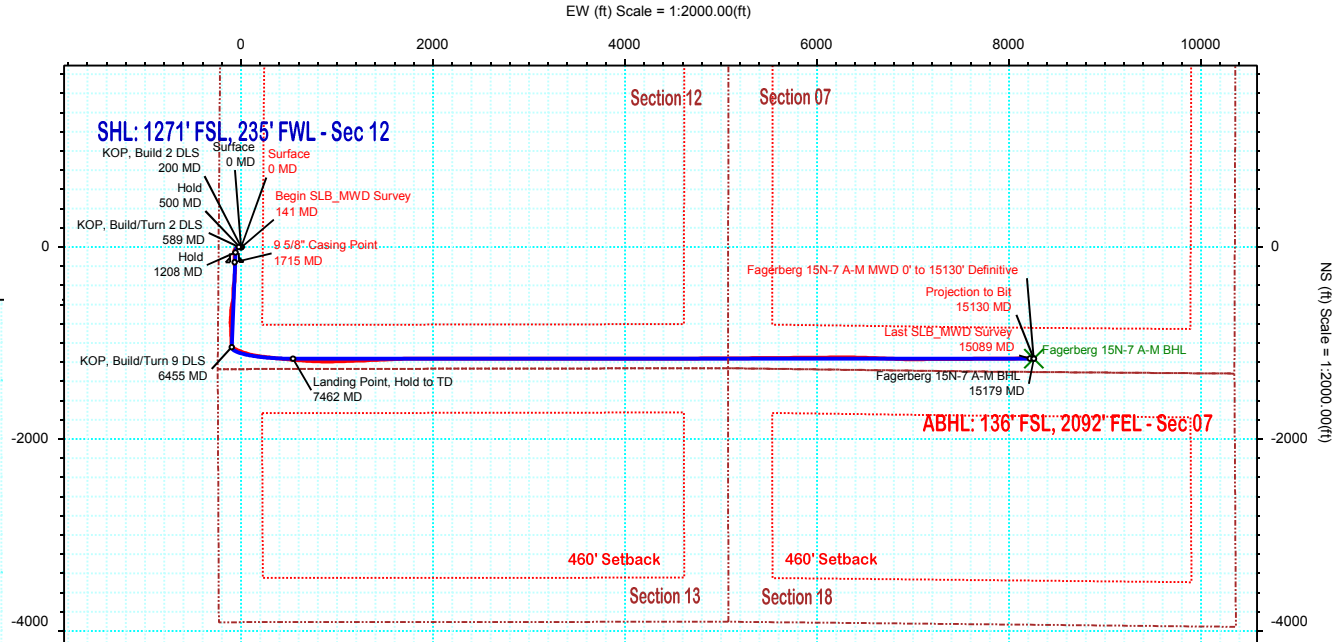
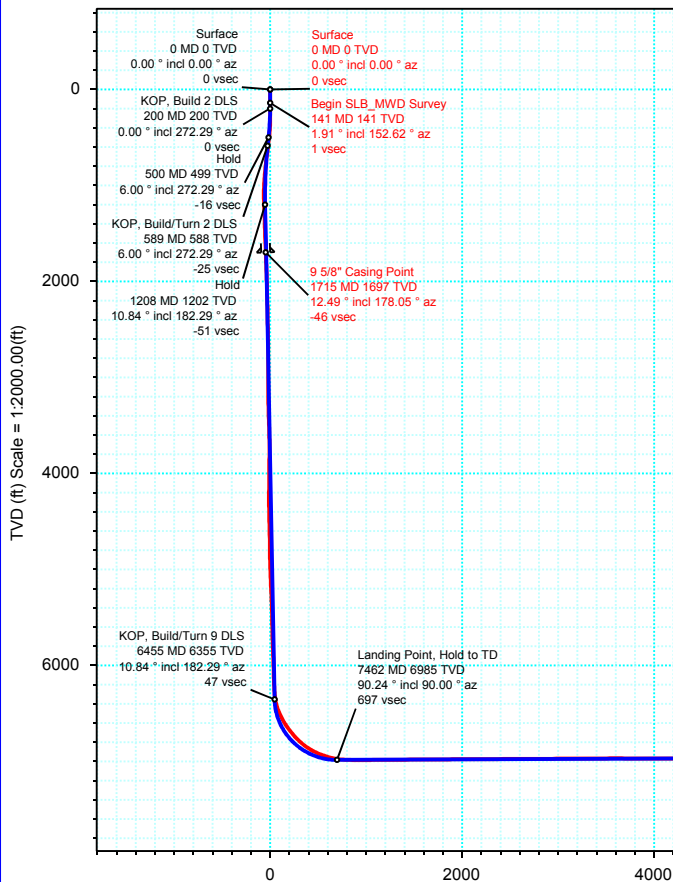
Borehole: Original Hole	Well: Fagerberg 15N-7 A-M	Field: CO, Weld County (NAD 83 NZ)	Structure: 12-06N-66W (Fagerberg 32-12 Pad) - PD 462
-----------------------------------	-------------------------------------	--	--

Gravity & Magnetic Parameters		Surface Location NAD83 Colorado State Plane, Northern Zone, US Feet			Miscellaneous		
Model: HDGM 2016	Dip: 67.037°	Date: 27-Jun-2016	Lat: N 40 29 56.62	Northing: 1425567.84ftUS	Grid Conv: 0.4949°	Slot: Fagerberg 15N-7 A-M	TVD Ref: KB 20ft(4820ft above MSL)
MagDec: 8.3°	FS: 52675.265nT	Gravity FS: 999.045mgn (9.80665 Based)	Lon: W 104 44 2.85	Easting: 3212989.79ftUS	Scale Fact: 0.99996621	Plan: Fagerberg 15N-7 A-M MWD 0' to 15130' Definitive	

PvA



True North
Tot Corr (M->T 8.300°)
Mag Dec (8.300°)
Grid Conv (0.495°)



Target Description		Surface Location					Local Coord	
Latitude	Longitude	Latitude	Longitude	TV	VSec	N(+)/S(-)	E(+)/W(-)	
Fagerberg 33-12 Pad Sec 13 - 460' Setback	N 40 29 56.62 W 104 44 2.85	1425567.84	3212989.786	N 40 29 56.62	W 104 44 2.85	4820.00	0.00	0.00
Fagerberg 33-12 Pad Sec 07 - 460' Setback	N 40 29 56.62 W 104 44 2.85	1425567.84	3212989.79	4820.00	0.00	0.00	0.00	0.00
Fagerberg 33-12 Pad Sec 18 - 460' Setback	N 40 29 56.62 W 104 44 2.85	1425567.84	3212989.79	4820.00	0.00	0.00	0.00	0.00
Fagerberg 33-12 Pad Sec 12-07	N 40 29 56.62 W 104 44 2.85	1425567.84	3212989.79	4820.00	0.00	0.00	0.00	0.00
Fagerberg 33-12 Pad Sec 12 - 460' Setback	N 40 29 56.62 W 104 44 2.85	1425567.84	3212989.79	4820.00	0.00	0.00	0.00	0.00
Fagerberg 33-12 Pad Sec 13-18	N 40 29 56.62 W 104 44 2.85	1425567.84	3212989.79	4820.00	0.00	0.00	0.00	0.00
Fagerberg 15N-7 A-M BHL	N 40 29 45.11 W 104 42 15.97	1424476.26	3221256.25	6952.67	8338.52	-1162.98	8257.02	

Critical Points								
Critical Point	MD	INCL	AZIM	TVD	VSEC	N(+)/S(-)	E(+)/W(-)	DLS
Surface	0.00	0.00	0.00	0.00	0.00	0.00	0.00	
Begin SLB_MWD Survey	141.00	1.91	152.62	140.97	1.36	-2.09	1.08	1.35
9 5/8" Casing Point	1715.00	12.49	178.05	1697.44	-45.62	-157.52	-68.26	0.57
Last SLB_MWD Survey	15089.00	89.21	90.13	6960.08	8296.67	-1160.80	8215.07	1.69
Projection to Bit	15130.00	89.21	90.13	6960.64	8337.28	-1160.89	8256.06	0.01



Fagerberg 15N-7 A-M MWD 0' to 15130' Definitive Survey Geodetic Report

(Def Survey)

Report Date: June 27, 2016 - 09:22 AM
Client: Synergy
Field: CO, Weld County (NAD 83 NZ)
Structure / Slot: Synergy 12-06N-66W (Fagerberg 32-12 Pad) - PD 462 / Fagerberg 15N-7 A-M
Well: Fagerberg 15N-7 A-M
Borehole: Original Hole
UWI / API#: Unknown / Unknown
Survey Name: Fagerberg 15N-7 A-M MWD 0' to 15130' Definitive
Survey Date: June 27, 2016
Tort / AHD / DDI / ERD Ratio: 199.930 ° / 9475.046 ft / 6.613 / 1.356
Coordinate Reference System: NAD83 Colorado State Plane, Northern Zone, US Feet
Location Lat / Long: N 40° 29' 56.61600", W 104° 44' 2.85000"
Location Grid N/E Y/X: N 1425567.840 ftUS, E 3212989.786 ftUS
CRS Grid Convergence Angle: 0.4949 °
Grid Scale Factor: 0.99996621
Version / Patch: 2.9.370.0

Survey / DLS Computation: Minimum Curvature / Lubinski
Vertical Section Azimuth: 98.017 ° (True North)
Vertical Section Origin: 0.000 ft, 0.000 ft
TVD Reference Datum: KB 20ft
TVD Reference Elevation: 4820.000 ft above MSL
Seabed / Ground Elevation: 4800.000 ft above MSL
Magnetic Declination: 8.300 °
Total Gravity Field Strength: 999.0448mgn (9.80665 Based)
Gravity Model: GARM
Total Magnetic Field Strength: 52575.265 nT
Magnetic Dip Angle: 67.037 °
Declination Date: June 27, 2016
Magnetic Declination Model: HDGM 2016
North Reference: True North
Grid Convergence Used: 0.0000 °
Total Corr Mag North->True North: 8.3000 °
Local Coord Referenced To: Well Head

Comments	MD (ft)	Incl (°)	Azim True (°)	TVD (ft)	VSEC (ft)	NS (ft)	EW (ft)	DLS (°/100ft)	Northing (ftUS)	Easting (ftUS)	Latitude (°)	Longitude (°)
Surface Begin	0.00	0.00	0.00	0.00	0.00	0.00	0.00	N/A	1425567.84	3212989.79	40.499060	-104.734125
SLB_MWD Survey	141.00	1.91	152.62	140.97	1.36	-2.09	1.08	1.35	1425565.76	3212990.88	40.499054	-104.734121
	235.00	1.01	199.76	234.95	2.10	-4.26	1.52	1.52	1425563.60	3212991.34	40.499048	-104.734120
	329.00	1.36	269.34	328.93	0.83	-5.05	0.13	1.47	1425562.80	3212989.96	40.499046	-104.734125
	422.00	4.10	277.01	421.82	-3.58	-4.65	-4.27	2.96	1425563.15	3212985.56	40.499047	-104.734140
	515.00	6.58	280.33	514.40	-12.23	-3.29	-12.81	2.70	1425564.44	3212977.00	40.499051	-104.734171
	609.00	7.21	279.86	607.72	-23.51	-1.31	-23.93	0.67	1425566.32	3212965.87	40.499056	-104.734211
	702.00	7.54	265.77	699.96	-35.32	-0.76	-35.77	1.97	1425566.77	3212954.02	40.499058	-104.734254
	795.00	7.46	238.37	792.19	-45.94	-4.38	-47.01	3.81	1425563.05	3212942.82	40.499048	-104.734294
	889.00	8.85	222.12	885.25	-54.69	-12.95	-57.06	2.85	1425554.40	3212932.84	40.499024	-104.734330
	984.00	8.12	212.42	979.22	-61.57	-24.04	-65.56	1.69	1425543.24	3212924.44	40.498994	-104.734361
	1078.00	8.15	192.72	1072.29	-64.86	-36.15	-70.59	2.95	1425531.08	3212919.51	40.498961	-104.734379
	1170.00	9.52	177.01	1163.21	-63.94	-50.12	-71.63	3.00	1425517.11	3212918.60	40.498922	-104.734383
	1263.00	10.17	175.51	1254.84	-60.69	-65.99	-70.58	0.75	1425501.25	3212919.78	40.498879	-104.734379
	1356.00	11.21	178.50	1346.22	-57.42	-83.21	-69.70	1.27	1425484.04	3212920.80	40.498832	-104.734376
	1449.00	11.67	179.57	1437.37	-54.54	-101.65	-69.40	0.54	1425465.60	3212921.27	40.498781	-104.734375
	1543.00	12.16	179.09	1529.35	-51.61	-121.05	-69.17	0.54	1425446.20	3212921.67	40.498728	-104.734374
	1670.00	12.24	178.33	1653.48	-47.27	-147.89	-68.56	0.14	1425419.37	3212922.50	40.498654	-104.734372
9 5/8" Casing Point	1715.00	12.49	178.05	1697.44	-45.62	-157.52	-68.26	0.57	1425409.74	3212922.89	40.498628	-104.734370
	1758.00	12.73	177.80	177.80	-43.98	-166.90	-67.92	0.57	1425400.36	3212923.31	40.498602	-104.734369
	1851.00	11.51	177.24	1830.32	-40.43	-186.41	-67.08	1.32	1425380.87	3212924.32	40.498548	-104.734366
	1944.00	11.31	176.33	1921.49	-36.85	-204.78	-66.05	0.29	1425362.51	3212925.51	40.498498	-104.734362
	2038.00	10.83	182.89	2013.74	-34.19	-222.79	-65.91	1.44	1425344.49	3212925.81	40.498448	-104.734362
	2131.00	11.05	180.48	2105.05	-32.24	-240.43	-66.42	0.55	1425326.85	3212925.45	40.498400	-104.734364
	2224.00	10.64	176.83	2196.39	-29.40	-257.92	-66.02	0.86	1425309.37	3212926.00	40.498352	-104.734362
	2316.00	10.86	184.10	2286.78	-27.16	-275.04	-66.17	1.49	1425292.24	3212925.99	40.498305	-104.734363
	2411.00	10.70	182.59	2380.10	-25.72	-292.78	-67.21	0.35	1425274.50	3212925.11	40.498256	-104.734367
	2505.00	10.31	182.05	2472.53	-24.02	-309.91	-67.90	0.42	1425257.37	3212924.56	40.498209	-104.734369
	2600.00	10.32	178.78	2565.99	-21.77	-326.91	-68.03	0.62	1425240.37	3212924.59	40.498163	-104.734370
	2693.00	9.95	182.21	2657.54	-19.62	-343.27	-68.16	0.76	1425224.01	3212924.60	40.498118	-104.734370
	2787.00	10.41	191.73	2750.07	-19.35	-359.70	-70.20	1.86	1425207.56	3212922.70	40.498073	-104.734377
	2882.00	10.80	189.41	2843.45	-20.12	-376.89	-73.40	0.60	1425190.34	3212919.64	40.498025	-104.734389
	2976.00	10.88	189.32	2935.77	-20.54	-394.33	-76.28	0.09	1425172.88	3212916.92	40.497978	-104.734399
	3071.00	10.66	185.75	3029.10	-20.39	-411.91	-78.61	0.74	1425155.28	3212914.74	40.497929	-104.734408
	3165.00	10.75	185.91	3121.46	-19.73	-429.28	-80.38	0.11	1425137.89	3212913.12	40.497882	-104.734414
	3258.00	10.70	183.73	3212.84	-18.76	-446.53	-81.84	0.44	1425120.64	3212911.81	40.497834	-104.734419
	3353.00	10.16	180.71	3306.27	-17.04	-463.71	-82.52	0.81	1425103.45	3212911.28	40.497787	-104.734422
	3447.00	10.13	178.38	3398.80	-14.60	-480.27	-82.38	0.44	1425086.89	3212911.56	40.497742	-104.734421
	3540.00	10.01	178.17	3490.37	-11.85	-496.52	-81.89	0.13	1425070.65	3212912.18	40.497697	-104.734419
	3633.00	9.51	176.24	3582.02	-8.89	-512.27	-81.13	0.64	1425054.91	3212913.08	40.497654	-104.734417
	3727.00	8.87	185.20	3674.82	-6.95	-527.23	-81.28	1.67	1425039.94	3212913.07	40.497613	-104.734417
	3820.00	10.34	190.72	3766.51	-7.00	-542.58	-83.48	1.87	1425024.58	3212910.99	40.497571	-104.734425
	3914.00	10.95	189.70	3858.89	-7.66	-559.67	-86.56	0.68	1425007.46	3212908.07	40.497524	-104.734436
	4008.00	11.45	192.42	3951.10	-8.63	-577.59	-90.07	0.77	1424989.51	3212904.71	40.497475	-104.734449
	4101.00	11.57	190.45	4042.23	-9.74	-595.78	-93.75	0.44	1424971.29	3212901.19	40.497425	-104.734462
	4194.00	12.14	190.54	4133.25	-10.57	-614.57	-97.23	0.61	1424952.47	3212897.87	40.497373	-104.734475
	4288.00	11.66	187.83	4225.23	-10.97	-633.70	-100.33	0.78	1424933.32	3212894.93	40.497321	-104.734486
	4381.00	11.19	188.26	4316.38	-10.98	-651.95	-102.91	0.52	1424915.05	3212892.51	40.497271	-104.734495
	4475.00	12.09	183.33	4408.45	-10.21	-670.80	-104.79	1.43	1424896.19	3212890.80	40.497219	-104.734502
	4569.00	12.66	179.77	4500.27	-7.93	-690.93	-105.32	1.01	1424876.05	3212890.44	40.497164	-104.734504
	4662.00	12.19	182.33	4591.09	-5.50	-710.93	-105.68	0.78	1424856.05	3212890.25	40.497109	-104.734505
	4755.00	12.27	183.33	4681.98	-3.72	-730.60	-106.66	0.25	1424836.37	3212889.45	40.497055	-104.734508
	4848.00	11.33	183.28	4773.01	-2.15	-749.60	-107.75	1.01	1424817.37	3212888.52	40.497002	-104.734512
	4942.00	11.40	186.59	4865.17	-1.16	-768.05	-109.35	0.70	1424798.90	3212887.08	40.496952	-104.734518
	5037.00	10.97	178.99	4958.37	0.49	-786.42	-110.27	1.62	1424780.53	3212886.32	40.496901	-104.734521
	5131.00	11.08	176.45	5050.63	3.70	-804.38	-109.55	0.53	1424762.58	3212887.19	40.496852	-104.734519
	5222.00	10.53	174.07	5140.02	7.46	-821.37	-108.15	0.78	1424745.59	3212888.74	40.496805	-104.734514
	5316.00	9.30	173.70	5232.62	11.41	-837.47	-106.43	1.31	1424729.51	3212890.60	40.496761	-104.734508
	5411.00	8.41	172.66	5326.48	15.15	-851.99	-104.70	0.95	1424715.01	3212892.45	40.496721	-104.734501
	5505.00	9.77	178.59	5419.30	18.28	-866.78	-103.62	1.75	1424700.23	3212893.66	40.496681	-104.734498
	5598.00	10.27	180.85	5510.88	20.60	-882.95	-103.55	0.69	1424684.06	3212893.87	40.496636	-104.734497
	5691.00	9.24	181.89	5602.54	22.44	-898.70	-103.92	1.13	1424668.31	3212893.64	40.496593	-104.734499
	5784.00	11.03	178.39	5694.09	24.72	-915.05	-103.91	2.03	1424651.95	3212893.78	40.496548	-104.734499
	5877.00	12.37	177.99	5785.15	27.94	-933.90	-103.31	1.45	1424633.11	3212894.54	40.496497	-104.734496
	5970.00	11.05	176.43	5876.21	31.47	-952.75	-102.41	1.46	1424614.27	3212895.61	40.496445	-104.734493
	6064.00	9.86	179.15	5968.65	34.52	-969.79	-101.73	1.37	1424597.24	3212896.44	40.496398	-104.734491
	6159.00	11.00	179.64	6062.08	37.09	-986.99	-101.55					

Comments	MD (ft)	Incl (°)	Azim True (°)	TVD (ft)	VSEC (ft)	NS (ft)	EW (ft)	DLS (°/100ft)	Northing (ftUS)	Easting (ftUS)	Latitude (°)	Longitude (°)
	7006.00	49.53	97.74	6813.09	331.92	-1135.48	175.27	8.24	1424433.95	3213174.85	40.495943	-104.733495
	7099.00	57.90	96.92	6868.08	406.81	-1145.01	249.56	9.03	1424425.07	3213249.21	40.495917	-104.733228
	7193.00	66.08	96.53	6912.18	489.71	-1154.71	331.91	8.71	1424416.08	3213331.64	40.495890	-104.732932
	7288.00	72.31	94.90	6945.90	578.39	-1163.52	420.23	6.75	1424408.04	3213420.03	40.495866	-104.732614
	7383.00	79.06	94.76	6969.38	670.25	-1171.26	511.90	7.10	1424401.08	3213511.76	40.495845	-104.732284
	7477.00	85.69	94.80	6981.85	763.22	-1179.03	604.69	7.06	1424394.12	3213604.61	40.495824	-104.731951
	7572.00	89.59	93.64	6985.76	857.91	-1186.01	699.33	4.27	1424387.95	3213699.31	40.495805	-104.731611
	7665.00	90.03	91.52	6986.06	950.48	-1190.21	792.23	2.33	1424384.56	3213792.24	40.495793	-104.731277
	7759.00	90.48	90.19	6985.64	1043.75	-1191.61	886.22	1.50	1424383.97	3213886.23	40.495789	-104.730939
	7852.00	90.45	88.65	6984.89	1135.70	-1190.67	979.21	1.66	1424385.71	3213979.21	40.495792	-104.730604
	7946.00	90.65	87.76	6983.99	1228.32	-1187.72	1073.16	0.97	1424389.47	3214073.12	40.495800	-104.730266
	8039.00	90.45	88.10	6983.09	1319.87	-1184.36	1166.09	0.43	1424393.63	3214166.02	40.495809	-104.729932
	8133.00	90.41	87.64	6982.39	1412.40	-1180.87	1260.02	0.49	1424397.93	3214259.92	40.495819	-104.729595
	8227.00	90.58	87.65	6981.57	1504.86	-1177.01	1353.94	0.18	1424402.61	3214353.79	40.495829	-104.729257
	8320.00	90.41	87.37	6980.76	1596.30	-1172.97	1446.85	0.35	1424407.45	3214446.66	40.495840	-104.728923
	8413.00	90.31	87.64	6980.18	1687.74	-1168.93	1539.76	0.30	1424412.30	3214539.53	40.495851	-104.728589
	8507.00	90.31	88.03	6979.67	1780.25	-1165.37	1633.69	0.42	1424416.66	3214633.42	40.495861	-104.728251
	8600.00	90.58	88.48	6978.94	1871.90	-1162.54	1726.64	0.56	1424420.30	3214726.34	40.495869	-104.727917
	8694.00	90.48	90.05	6978.07	1964.80	-1161.33	1820.63	1.68	1424422.32	3214820.31	40.495872	-104.727579
	8787.00	90.34	90.11	6977.40	2056.91	-1161.46	1913.63	0.16	1424422.99	3214913.30	40.495872	-104.727245
	8881.00	90.38	90.04	6976.81	2150.01	-1161.59	2007.62	0.09	1424423.68	3215007.30	40.495871	-104.726907
	8974.00	90.31	89.66	6976.25	2242.06	-1161.34	2100.62	0.41	1424424.73	3215100.28	40.495872	-104.726572
	9067.00	90.17	90.25	6975.86	2334.14	-1161.27	2193.62	0.66	1424425.60	3215193.28	40.495872	-104.726238
	9160.00	90.17	90.40	6975.58	2426.30	-1161.80	2286.62	0.15	1424425.88	3215286.27	40.495871	-104.725903
	9255.00	90.21	90.33	6975.27	2520.46	-1162.40	2381.62	0.08	1424426.09	3215381.27	40.495869	-104.725562
	9350.00	90.14	90.19	6974.98	2614.59	-1162.83	2476.62	0.16	1424426.48	3215476.26	40.495868	-104.725220
	9441.00	90.52	89.70	6974.46	2704.68	-1162.75	2567.61	0.68	1424427.35	3215567.25	40.495868	-104.724883
	9535.00	90.62	89.46	6973.53	2797.66	-1162.06	2661.61	0.28	1424428.85	3215661.23	40.495870	-104.724555
	9630.00	90.38	90.17	6972.71	2891.69	-1161.76	2756.60	0.79	1424429.97	3215756.22	40.495871	-104.724214
	9723.00	90.38	89.90	6972.10	2983.78	-1161.82	2849.60	0.29	1424430.72	3215849.21	40.495871	-104.723879
	9817.00	90.31	90.19	6971.53	3076.87	-1161.89	2943.60	0.32	1424431.46	3215943.20	40.495870	-104.723541
	9910.00	90.52	89.44	6970.86	3168.92	-1161.59	3036.59	0.84	1424432.56	3216036.19	40.495871	-104.723207
	10003.00	90.17	90.14	6970.30	3260.96	-1161.24	3129.59	0.84	1424433.71	3216129.18	40.495872	-104.722873
	10096.00	90.31	89.93	6969.91	3353.06	-1161.30	3222.59	0.27	1424434.46	3216222.17	40.495872	-104.722538
	10189.00	90.41	89.70	6969.33	3445.10	-1161.00	3315.59	0.28	1424435.56	3216315.16	40.495873	-104.722204
	10283.00	90.24	90.22	6968.79	3538.17	-1160.93	3409.59	0.58	1424436.45	3216409.15	40.495873	-104.721866
	10378.00	89.83	90.24	6968.74	3632.30	-1161.31	3504.58	0.44	1424436.89	3216504.14	40.495872	-104.721524
	10471.00	89.62	90.50	6969.18	3724.47	-1161.91	3597.58	0.35	1424437.09	3216597.14	40.495870	-104.721190
	10564.00	89.86	90.30	6969.60	3816.65	-1162.56	3690.58	0.33	1424437.24	3216690.13	40.495868	-104.720856
	10658.00	89.76	90.14	6969.91	3909.78	-1162.93	3784.58	0.20	1424437.68	3216784.13	40.495867	-104.720518
	10752.00	89.73	90.23	6970.33	4002.90	-1163.24	3878.58	0.11	1424438.18	3216878.12	40.495866	-104.720180
	10846.00	89.73	90.10	6970.78	4096.02	-1163.51	3972.57	0.15	1424438.72	3216972.12	40.495865	-104.719842
	10939.00	89.97	89.66	6971.03	4188.08	-1163.32	4066.57	0.53	1424439.72	3217065.11	40.495866	-104.719507
	11034.00	89.83	89.57	6971.21	4282.06	-1162.68	4160.57	0.17	1424441.17	3217160.09	40.495868	-104.719166
	11129.00	89.73	90.25	6971.58	4376.11	-1162.53	4255.57	0.72	1424442.15	3217255.08	40.495868	-104.718824
	11224.00	89.90	89.69	6971.89	4470.18	-1162.48	4350.57	0.61	1424443.02	3217350.08	40.495868	-104.718483
	11318.00	90.03	89.63	6971.95	4563.18	-1161.93	4444.57	0.16	1424444.38	3217444.06	40.495870	-104.718145
	11412.00	90.03	89.50	6971.89	4656.16	-1161.21	4538.56	0.15	1424445.91	3217538.05	40.495871	-104.717807
	11507.00	90.27	90.13	6971.63	4750.19	-1160.90	4633.56	0.72	1424447.04	3217633.04	40.495872	-104.717465
	11601.00	90.24	89.95	6971.21	4843.27	-1160.97	4727.56	0.20	1424447.78	3217727.03	40.495872	-104.717127
	11695.00	90.38	89.63	6970.70	4936.31	-1160.62	4821.56	0.37	1424448.94	3217821.02	40.495873	-104.716789
	11788.00	90.48	89.52	6970.01	5028.30	-1159.93	4914.55	0.16	1424450.44	3217914.00	40.495875	-104.716455
	11882.00	90.41	89.94	6969.27	5121.31	-1159.49	5008.55	0.46	1424451.69	3218007.98	40.495876	-104.716117
	11975.00	90.62	89.61	6968.44	5213.35	-1159.13	5101.55	0.42	1424452.85	3218100.97	40.495877	-104.715782
	12069.00	90.45	89.48	6967.56	5306.32	-1158.38	5195.54	0.23	1424454.41	3218194.95	40.495879	-104.715445
	12163.00	90.41	89.55	6966.86	5399.32	-1157.58	5289.53	0.08	1424456.02	3218288.93	40.495881	-104.715107
	12256.00	90.55	89.21	6966.08	5491.22	-1156.58	5382.52	0.39	1424457.83	3218381.90	40.495884	-104.714772
	12349.00	90.31	89.80	6965.38	5583.19	-1155.77	5475.52	0.68	1424459.44	3218474.88	40.495886	-104.714438
	12442.00	90.45	89.61	6964.77	5675.22	-1155.29	5568.51	0.25	1424460.73	3218567.87	40.495887	-104.714103
	12536.00	90.41	89.56	6964.06	5768.20	-1154.60	5662.51	0.07	1424462.22	3218661.85	40.495889	-104.713766
	12629.00	90.52	89.57	6963.31	5860.18	-1153.89	5755.50	0.11	1424463.74	3218754.83	40.495891	-104.713431
	12723.00	90.45	89.74	6962.52	5953.18	-1153.33	5849.50	0.20	1424465.11	3218848.82	40.495892	-104.713093
	12817.00	90.69	89.01	6961.59	6046.11	-1152.31	5943.49	0.82	1424466.94	3218942.79	40.495895	-104.712755
	12911.00	90.34	89.83	6960.74	6139.05	-1151.37	6037.48	0.94	1424468.70	3219036.77	40.495898	-104.712417
	13005.00	90.55	89.35	6960.01	6232.03	-1150.70	6131.47	0.55	1424470.18	3219130.75	40.495899	-104.712079
	13099.00	90.41	89.91	6959.22	6325.02	-1150.09	6225.47	0.61	1424471.60	3219224.73	40.495901	-104.711741
	13193.00	90.41	89.80	6958.54	6418.07	-1149.85	6319.46	0.11	1424472.65	3219318.72	40.495902	-104.711403
	13288.00	90.21	91.63	6958.03	6512.29	-1151.04	6414.45	1.94	1424472.28	3219413.71	40.495898	-104.711062
	13383.00	90.41	91.69	6957.52	6606.71	-1153.80	6509.41	0.23	1424470.34	3219508.68	40.495891	-104.710720
	13477.00	90.17	92.27	6957.04	6700.18	-1157.05	6603.35	0.66	1424467.91	3219602.65	40.495882	-104.710383
	13572.00	90.21	92.18	6956.73	6794.70	-1160.73	6698.28	0.10	1424465.04	3219697.60	40.495871	-104.710041
	13666.00	90.34	91.59	6956.28	6888.16	-1163.83	6792.23	0.64	1424462.76	3219791.57	40.495863	-104.709704
	13761.00	90.41	92.11	6955.65	6982.61	-1166.89	6887.17	0.54	1424460.51	3219886.53	40.495854	-104.709362
	13856.00	90.41	89.67	6954.96	7076.86	-1168.36	6982.15	2.57	1424459.86	3219981.52	40.495850	-104.709021
	13950.00	90.45	89.61	6954.26	7169.86	-1167.77	7076.15	0.07	1424461.27	3220075.50	40.495852	-104.708683
	14044.00	90.55	89.23	6953.44	7262.80	-1166.82	7170.14	0.42	1424463.03	3220169.48	40.495854	-104.708345
	14136.00	90.45	89.60	6952.64	7353.76	-1165.88	7262.13	0.41	1424464.76	3220261.46	40.495857	-104.708014
	14230.00	90.31	89.65	6952.02	7446.75	-116						

Comments	MD (ft)	Incl (°)	Azim True (°)	TVD (ft)	VSEC (ft)	NS (ft)	EW (ft)	DLS (°/100ft)	Northing (ftUS)	Easting (ftUS)	Latitude (°)	Longitude (°)
		1	1670.000	7477.000	Act Stns	8.750	5.500	NAL_MWD_PLUS_0.5_DEG				
		1	7477.000	15089.000	Act Stns	8.500	5.500	NAL_MWD_PLUS_0.5_DEG				
		1	15089.000	15130.000	Act Stns	8.500	5.500	SLB_BLIND+TREND				

Original Hole / Fagerberg 15N-7 A-M MWD 0' to 15130' Definitive
Original Hole / Fagerberg 15N-7 A-M MWD 0' to 15130' Definitive
Original Hole / Fagerberg 15N-7 A-M MWD 0' to 15130' Definitive