



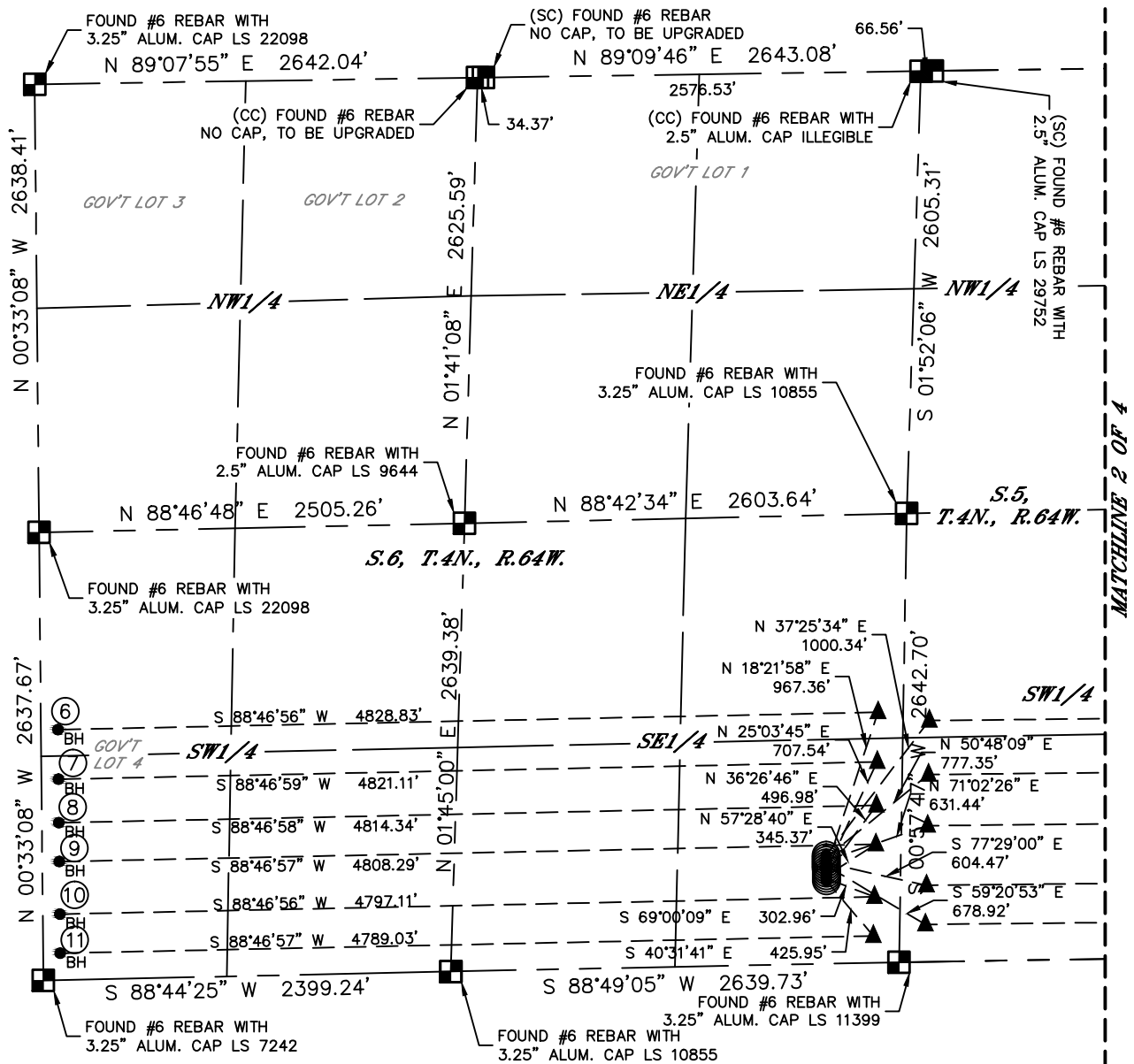
Lat40°, Inc. 6250 W. 10th Street, Unit 2, Greeley, CO 970-515-5294

# MULTI-WELL PLAN

HAROLD 4N64W6Y PAD

SECTION: 6  
TOWNSHIP: 4N  
RANGE: 64W  
6TH. P.M.  
WELD COUNTY, CO

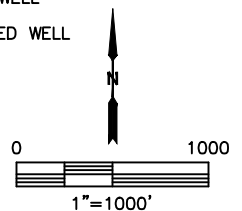
THIS MAP DOES NOT REPRESENT A BOUNDARY SURVEY



#	WELL NAME	BHL FOOTAGE	BHL LAT°	BHL LONG°	BHL S-T-R
1	HAROLD 6X-202	1420 FSL 100 FEL	40.33799	-104.54630	4-4N-64W
2	HAROLD 6X-302	1102 FSL 100 FEL	40.33711	-104.54632	4-4N-64W
3	HAROLD 6X-232	801 FSL 100 FEL	40.33629	-104.54634	4-4N-64W
4	HAROLD 6Y-312	450 FSL 100 FEL	40.33532	-104.54636	4-4N-64W
5	HAROLD 6Y-202	220 FSL 100 FEL	40.33469	-104.54638	4-4N-64W
6	HAROLD 6X-204	1474 FSL 100 FWL	40.33798	-104.60168	6-4N-64W
7	HAROLD 6X-304	1182 FSL 100 FWL	40.33718	-104.60168	6-4N-64W
8	HAROLD 6X-234	926 FSL 100 FWL	40.33648	-104.60168	6-4N-64W
9	HAROLD 6X-334	697 FSL 100 FWL	40.33585	-104.60168	6-4N-64W
10	HAROLD 6Y-214	388 FSL 100 FWL	40.33500	-104.60168	6-4N-64W
11	HAROLD 6Y-304	158 FSL 100 FWL	40.33437	-104.60168	6-4N-64W

## LEGEND

- = ALIQUOT MONUMENT AS DESCRIBED
- = CALCULATED POSITION
- = SURFACE HOLE LOCATION (SHL)
- ▲ = ENTRY POINT LOCATION (EP)
- = BOTTOM HOLE LOCATION (BHL)
- ⊙ = EXISTING WELL
- ⊙ = ABANDONED WELL



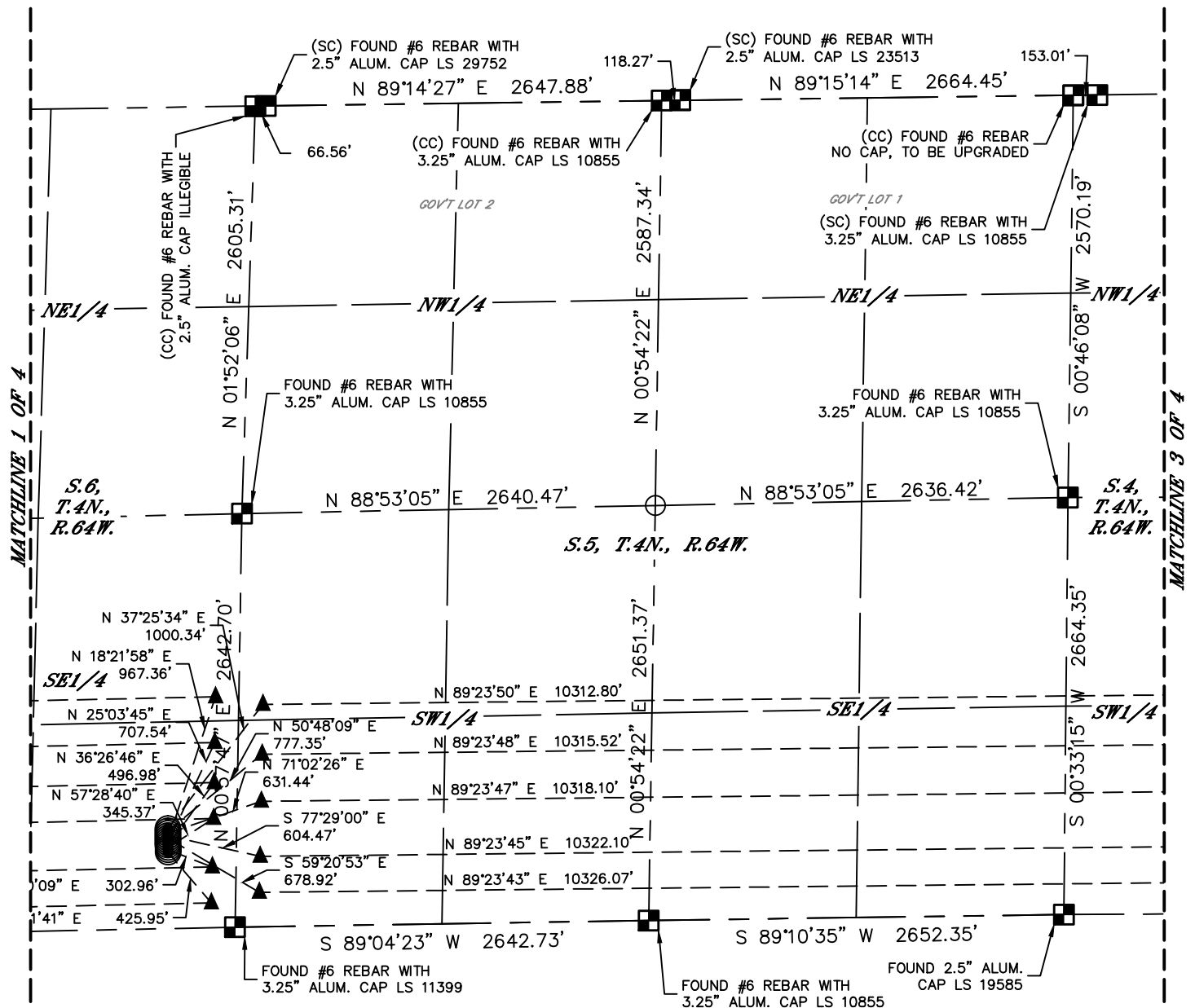


Lat40°, Inc. 6250 W. 10th Street, Unit 2, Greeley, CO 970-515-5294

# MULTI-WELL PLAN

HAROLD 4N64W6Y PAD

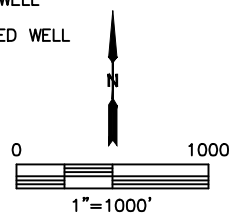
SECTION: 6  
TOWNSHIP: 4N  
RANGE: 64W  
6TH. P.M.  
WELD COUNTY, CO



#	WELL NAME	BHL FOOTAGE				BHL LAT°	BHL LONG°	BHL S-T-R
1	HAROLD 6X-202	1420	FSL	100	FEL	40.33799	-104.54630	4-4N-64W
2	HAROLD 6X-302	1102	FSL	100	FEL	40.33711	-104.54632	4-4N-64W
3	HAROLD 6X-232	801	FSL	100	FEL	40.33629	-104.54634	4-4N-64W
4	HAROLD 6Y-312	450	FSL	100	FEL	40.33532	-104.54636	4-4N-64W
5	HAROLD 6Y-202	220	FSL	100	FEL	40.33469	-104.54638	4-4N-64W
6	HAROLD 6X-204	1474	FSL	100	FWL	40.33798	-104.60168	6-4N-64W
7	HAROLD 6X-304	1182	FSL	100	FWL	40.33718	-104.60168	6-4N-64W
8	HAROLD 6X-234	926	FSL	100	FWL	40.33648	-104.60168	6-4N-64W
9	HAROLD 6X-334	697	FSL	100	FWL	40.33585	-104.60168	6-4N-64W
10	HAROLD 6Y-214	388	FSL	100	FWL	40.33500	-104.60168	6-4N-64W
11	HAROLD 6Y-304	158	FSL	100	FWL	40.33437	-104.60168	6-4N-64W

## LEGEND

- = ALIQUOT MONUMENT AS DESCRIBED
- = CALCULATED POSITION
- = SURFACE HOLE LOCATION (SHL)
- ▲ = ENTRY POINT LOCATION (EP)
- <sub>BH</sub> = BOTTOM HOLE LOCATION (BHL)
- ⊙ = EXISTING WELL
- ⊙ = ABANDONED WELL



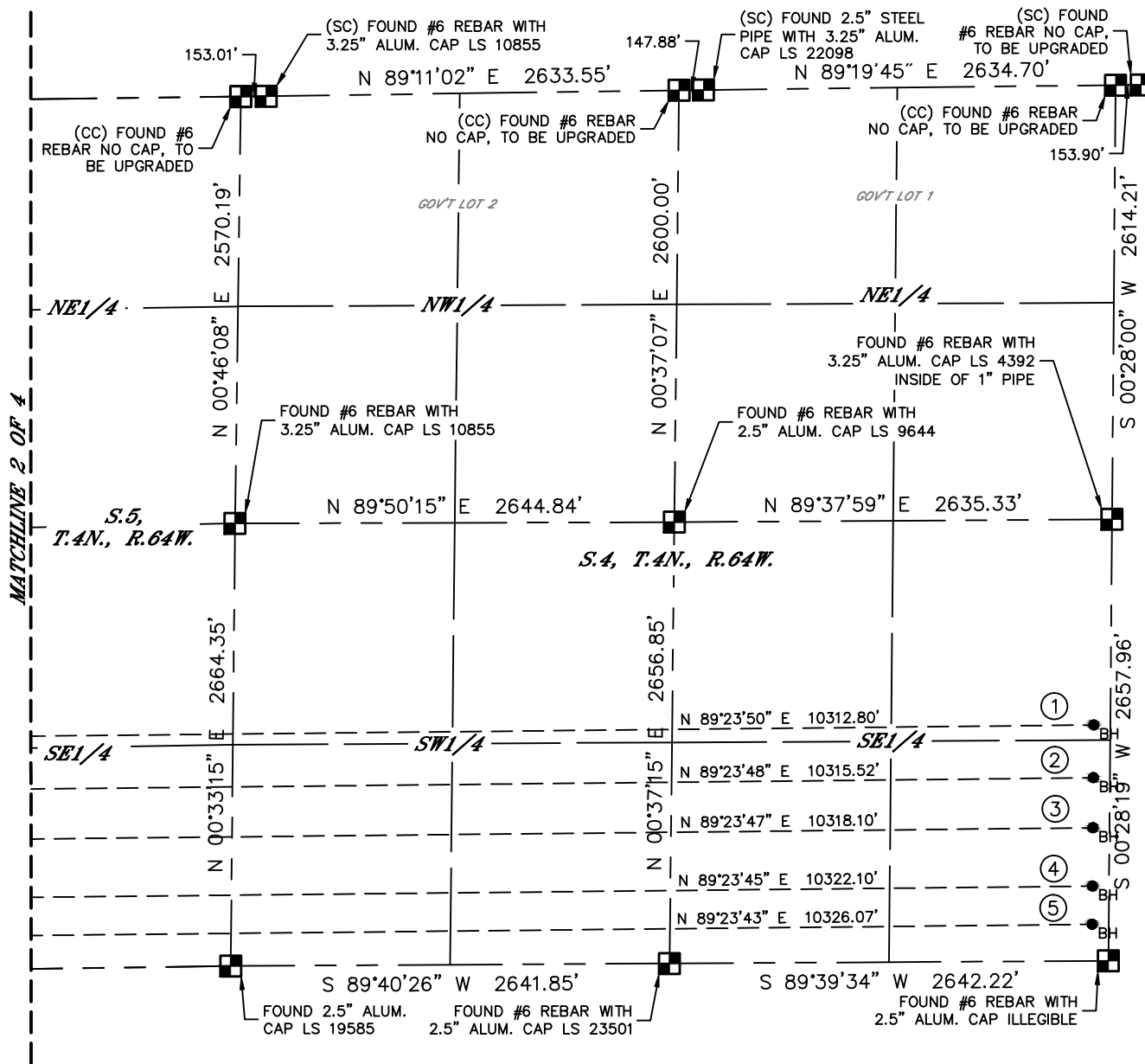


Lat40°, Inc. 6250 W. 10th Street, Unit 2, Greeley, CO 970-515-5294

# MULTI-WELL PLAN

HAROLD 4N64W6Y PAD

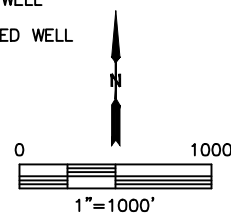
SECTION: 6  
TOWNSHIP: 4N  
RANGE: 64W  
6TH. P.M.  
WELD COUNTY, CO



#	WELL NAME	BHL FOOTAGE	BHL LAT °	BHL LONG °	BHL S-T-R
1	HAROLD 6X-202	1420 FSL 100 FEL	40.33799	-104.54630	4-4N-64W
2	HAROLD 6X-302	1102 FSL 100 FEL	40.33711	-104.54632	4-4N-64W
3	HAROLD 6X-232	801 FSL 100 FEL	40.33629	-104.54634	4-4N-64W
4	HAROLD 6Y-312	450 FSL 100 FEL	40.33532	-104.54636	4-4N-64W
5	HAROLD 6Y-202	220 FSL 100 FEL	40.33469	-104.54638	4-4N-64W
6	HAROLD 6X-204	1474 FSL 100 FWL	40.33798	-104.60168	6-4N-64W
7	HAROLD 6X-304	1182 FSL 100 FWL	40.33718	-104.60168	6-4N-64W
8	HAROLD 6X-234	926 FSL 100 FWL	40.33648	-104.60168	6-4N-64W
9	HAROLD 6X-334	697 FSL 100 FWL	40.33585	-104.60168	6-4N-64W
10	HAROLD 6Y-214	388 FSL 100 FWL	40.33500	-104.60168	6-4N-64W
11	HAROLD 6Y-304	158 FSL 100 FWL	40.33437	-104.60168	6-4N-64W

## LEGEND

- = ALIQUOT MONUMENT AS DESCRIBED
- = CALCULATED POSITION
- = SURFACE HOLE LOCATION (SHL)
- ▲ = ENTRY POINT LOCATION (EP)
- = BOTTOM HOLE LOCATION (BHL)
- ⊙ = EXISTING WELL
- ⊙ = ABANDONED WELL





Lat40°, Inc. 6250 W. 10th Street, Unit 2, Greeley, CO 970-515-5294

# MULTI-WELL PLAN

## HAROLD 4N64W6Y PAD

SECTION: 6  
TOWNSHIP: 4N  
RANGE: 64W  
6TH. P.M.  
WELD COUNTY, CO



#	WELL NAME	SHL FOOTAGE				SHL LAT °	SHL LONG °	SHL PDOP	SHL ELEV (FT.)	SHL 1/4/1/4	SHL S-T-R
1	HAROLD 6X-202	637	FSL	441	FEL	40.33582	-104.58549	1.7	4788	SESE	6-4N-64W
2	HAROLD 6X-302	622	FSL	440	FEL	40.33578	-104.58549	1.7	4788	SESE	6-4N-64W
3	HAROLD 6X-232	607	FSL	440	FEL	40.33574	-104.58549	1.6	4788	SESE	6-4N-64W
4	HAROLD 6Y-312	592	FSL	439	FEL	40.33570	-104.58549	1.6	4788	SESE	6-4N-64W
5	HAROLD 6Y-202	577	FSL	439	FEL	40.33566	-104.58549	1.6	4788	SESE	6-4N-64W
6	HAROLD 6X-204	562	FSL	438	FEL	40.33562	-104.58549	1.6	4788	SESE	6-4N-64W
7	HAROLD 6X-304	547	FSL	438	FEL	40.33558	-104.58549	1.6	4788	SESE	6-4N-64W
8	HAROLD 6X-234	532	FSL	437	FEL	40.33554	-104.58549	1.6	4787	SESE	6-4N-64W
9	HAROLD 6X-334	517	FSL	437	FEL	40.33549	-104.58549	1.6	4787	SESE	6-4N-64W
10	HAROLD 6Y-214	502	FSL	436	FEL	40.33545	-104.58549	1.7	4787	SESE	6-4N-64W
11	HAROLD 6Y-304	487	FSL	436	FEL	40.33541	-104.58549	1.7	4787	SESE	6-4N-64W

