

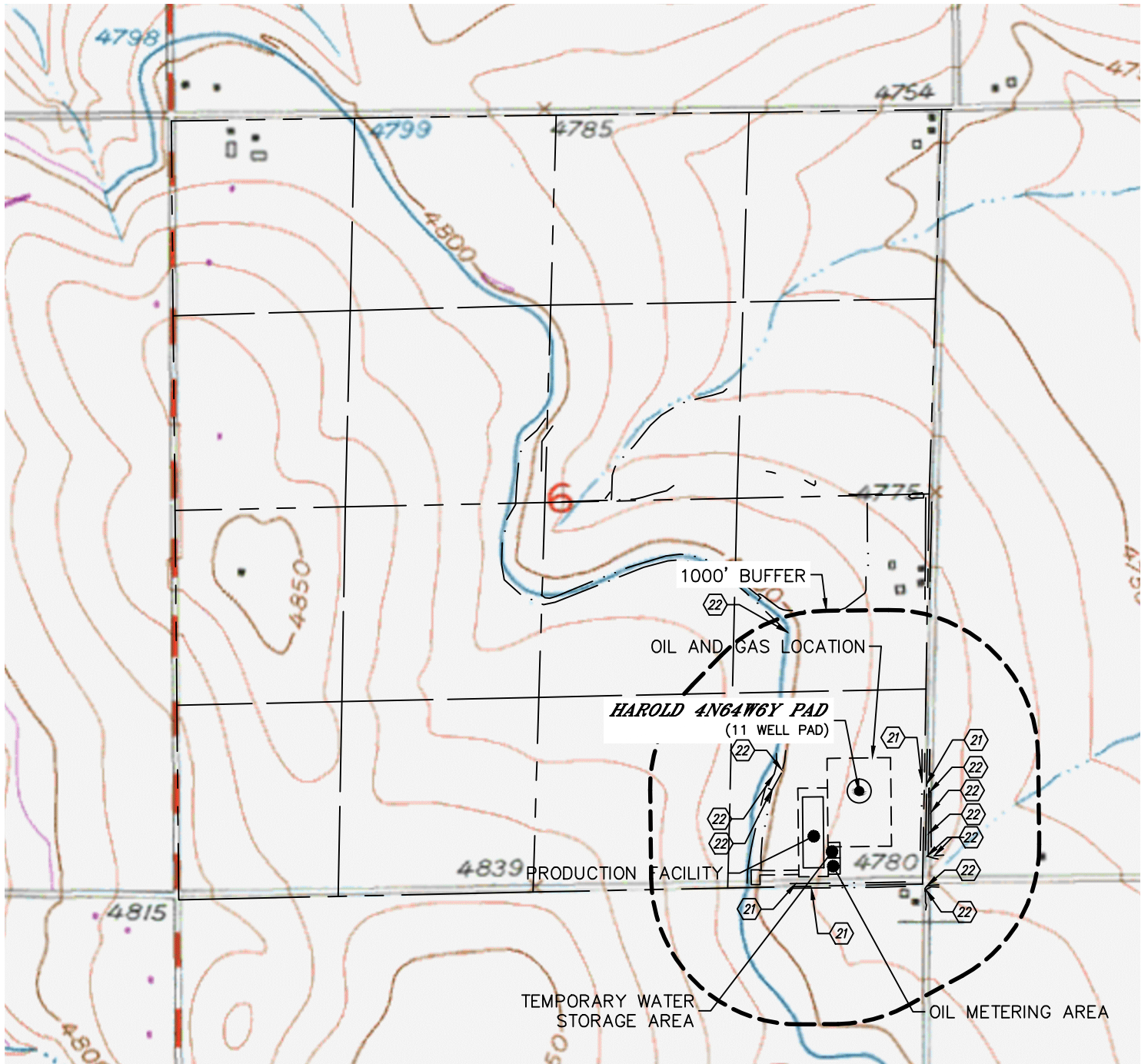


Lat40°, Inc. 6250 W. 10th Street, Unit 2, Greeley, CO 970-515-5294

HYDROLOGY MAP

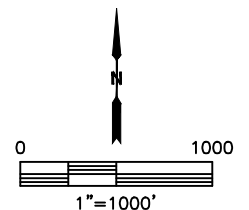
HAROLD 4N64W6Y PAD

SECTION: 6
TOWNSHIP: 4N
RANGE: 64W
6TH. P.M.
WELD COUNTY, CO



DISTANCES MEASURED FROM THE EDGE OF THE OIL AND GAS LOCATION.

- 21 BARROW DITCH 45', 77' S, 210', 243' E,
- 22 DITCH 250', 263', 269' E, 250', 296', 360', 376' SE, 256', 349' W, 147', 168', 178', 186, 893' NW



NEAREST DOWN GRADIENT SURFACE WATER: BARROW DITCH 45' S

DATE: 01/09/2017
PROJECT#: 2016098