



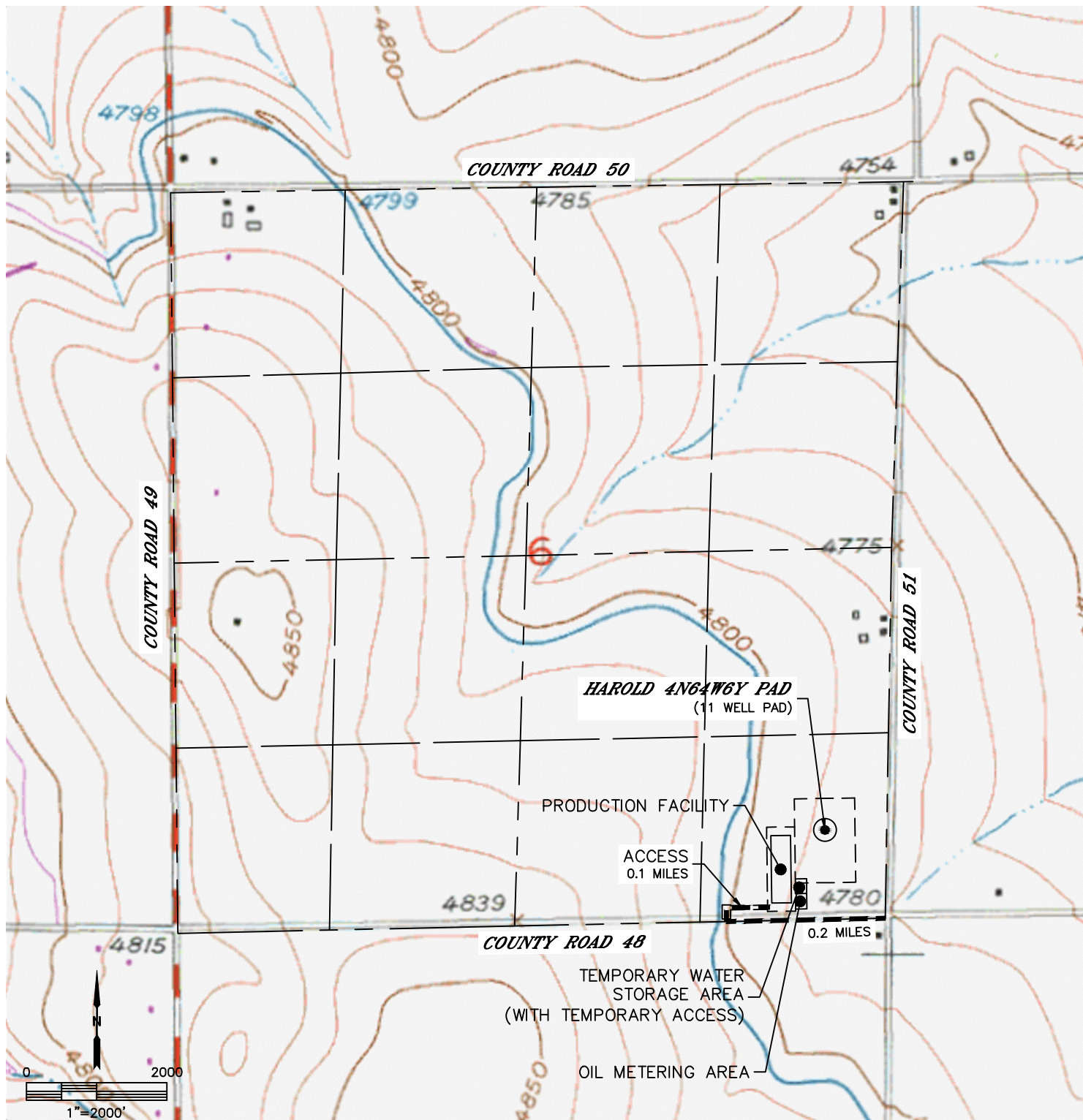
Lat40°, Inc. 6250 W. 10th Street, Unit 2, Greeley, CO 970-515-5294

ACCESS ROAD MAP

HAROLD 4N64W6Y PAD

SECTION: 6
TOWNSHIP: 4N
RANGE: 64W
6TH. P.M.
WELD COUNTY, CO

DRIVING DIRECTIONS TO HAROLD 4N64W6Y PAD:
FROM THE INTERSECTION OF COUNTY ROAD 48 AND COUNTY ROAD 51, DRIVE WEST ON COUNTY ROAD 48 FOR 0.2 MILES. TURN NORTH AND DRIVE ON EXISTING ACCESS ROAD FOR 0.1 MILES TO PROPOSED LOCATION.





Lat40°, Inc. 6250 W. 10th Street, Unit 2, Greeley, CO 970-515-5294

ACCESS ROAD MAP

HAROLD 4N64W6Y PAD

SECTION: 6
TOWNSHIP: 4N
RANGE: 64W
6TH. P.M.
WELD COUNTY, CO

