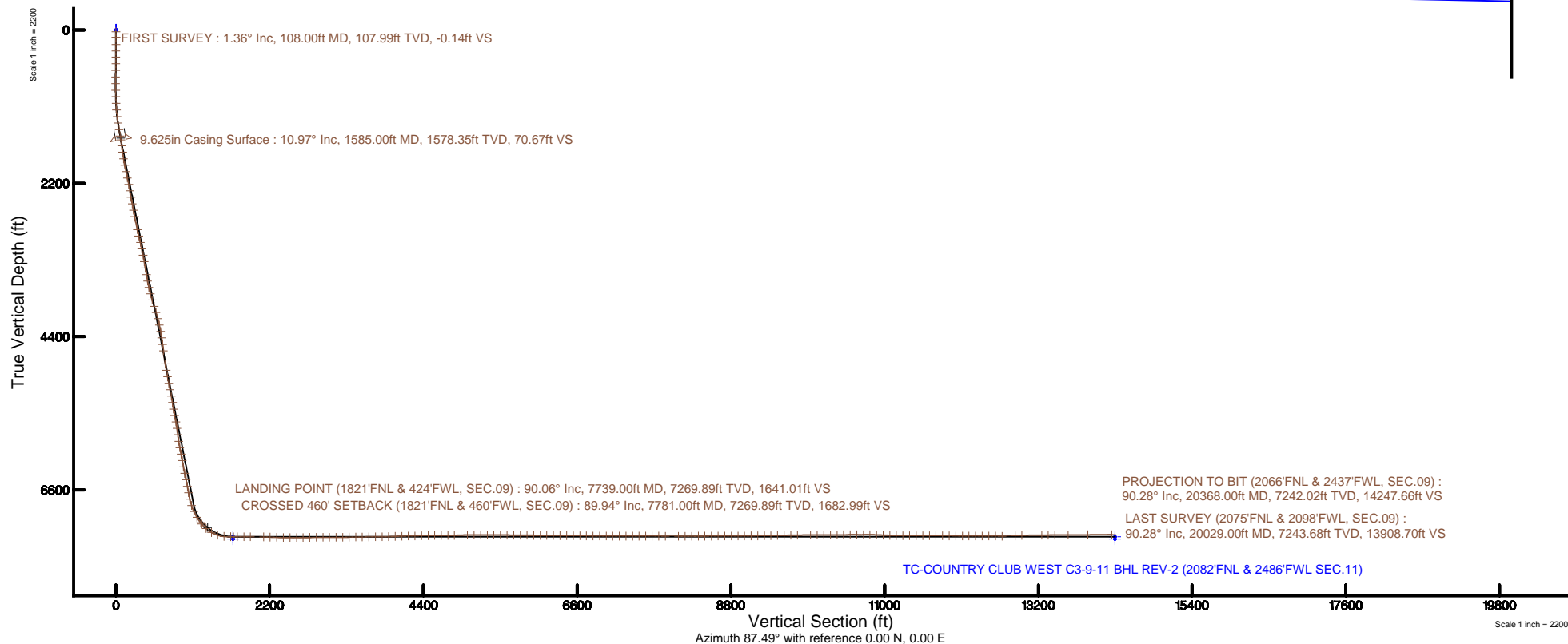
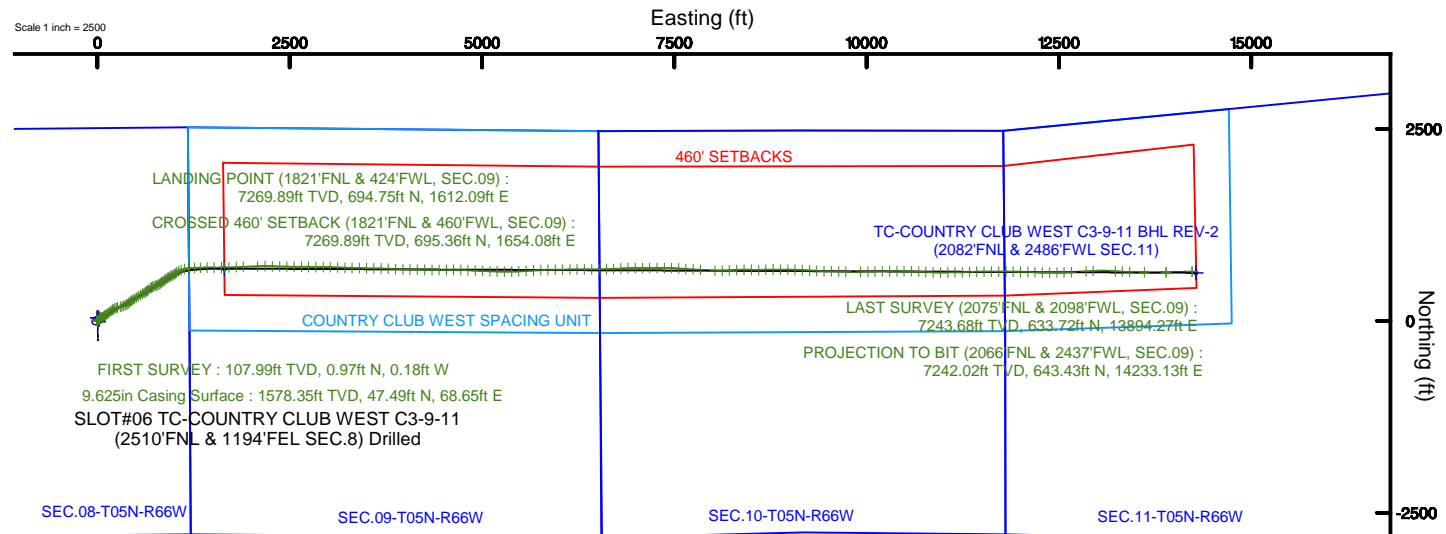


EXTRACTION OIL & GAS

Location: COLORADO Slot: SLOT#06 TC-COUNTRY CLUB WEST C3-9-11 (2510'FNL & 1194'FEL SEC.8) Drilled
Field: WELD COUNTY (NAD83/TRUE NORTH) Well: TC-COUNTRY CLUB WEST C3-9-11
Facility: SEC.08-T05N-R66W Wellbore: TC-COUNTRY CLUB WEST C3-9-11 PWB

| | |
|--|--|
| Plot reference wellpath is TC-COUNTRY CLUB WEST C3-9-11 REV-B.0 PWP | Grid System: NAD83 / Lambert Colorado SP, Northern Zone (501), US feet |
| True vertical depths are referenced to PATTERSON 341 (25) (RKB) | * = Wellpath was transformed from a different geodetic datum |
| Measured depths are referenced to PATTERSON 341 (25) (RKB) | North Reference: True north |
| PATTERSON 341 (25) (RKB) to Mean Sea Level: 4813 feet | Scale: True distance |
| Mean Sea Level to Mud line (At Slot: SLOT#06 TC-COUNTRY CLUB WEST C3-9-11 (2510'FNL & 1194'FEL SEC.8) Drilled): 0 feet | Depths are in feet |
| Coordinates are in feet referenced to Slot | Created by: ingmjamr on 2017-06-12 |
| | Database: WA_DEN_Deriver_Defn |





Actual Wellpath Report

TC-COUNTRY CLUB WEST C3-9-11 AWP

Page 1 of 12



REFERENCE WELLPATH IDENTIFICATION

| | | | |
|----------|--------------------------------|----------|--|
| Operator | EXTRACTION OIL & GAS | Slot | SLOT#06 TC-COUNTRY CLUB WEST C3-9-11 (2510'FNL & 1194'FEL SEC.8) Drilled |
| Area | COLORADO | Well | TC-COUNTRY CLUB WEST C3-9-11 |
| Field | WELD COUNTY (NAD83/TRUE NORTH) | Wellbore | TC-COUNTRY CLUB WEST C3-9-11 AWB |
| Facility | SEC.08-T05N-R66W | | |

REPORT SETUP INFORMATION

| | | | |
|---------------------|---|----------------------|---|
| Projection System | NAD83 / Lambert Colorado SP, Northern Zone (501), US feet | Software System | WellArchitect® 5.0 |
| North Reference | True | User | Ingmjmr |
| Scale | 0.999961 | Report Generated | 6/12/2017 at 2:10:43 PM |
| Convergence at slot | 0.46° East | Database/Source file | WA_DEN_Denver_Defn/TC-COUNTRY CLUB WEST C3-9-11_AWP.xml |

WELLPATH LOCATION

| | Local coordinates | | Grid coordinates | | Geographic coordinates | |
|-----------------------|-------------------|----------|------------------|-----------------|------------------------|-----------------|
| | North[ft] | East[ft] | Easting[US ft] | Northing[US ft] | Latitude | Longitude |
| Slot Location | 0.00 | 0.00 | 3195281.04 | 1394618.58 | 40°24'52.236"N | 104°47'55.248"W |
| Facility Reference Pt | | | 3195281.04 | 1394618.58 | 40°24'52.236"N | 104°47'55.248"W |
| Field Reference Pt | | | 3185481.27 | 1419166.81 | 40°28'55.560"N | 104°49'59.556"W |

WELLPATH DATUM

| | | | |
|--------------------------|---------------------------|--|-------------------|
| Calculation method | Minimum curvature | PATTERSON 341 (25') (RKB) to Facility Vertical Datum | 4813.00ft |
| Horizontal Reference Pt | Slot | PATTERSON 341 (25') (RKB) to Mean Sea Level | 4813.00ft |
| Vertical Reference Pt | PATTERSON 341 (25') (RKB) | PATTERSON 341 (25') (RKB) to Mud Line at Slot (SLOT#06 TC-COUNTRY CLUB WEST C3-9-11 (2510'FNL & 1194'FEL SEC.8) Drilled) | 4813.00ft |
| MD Reference Pt | PATTERSON 341 (25') (RKB) | Section Origin | N 0.00, E 0.00 ft |
| Field Vertical Reference | Mean Sea Level | Section Azimuth | 87.49° |

| REFERENCE WELLPATH IDENTIFICATION | | | |
|-----------------------------------|--------------------------------|----------|--|
| Operator | EXTRACTION OIL & GAS | Slot | SLOT#06 TC-COUNTRY CLUB WEST C3-9-11 (2510'FNL & 1194'FEL SEC.8) Drilled |
| Area | COLORADO | Well | TC-COUNTRY CLUB WEST C3-9-11 |
| Field | WELD COUNTY (NAD83/TRUE NORTH) | Wellbore | TC-COUNTRY CLUB WEST C3-9-11 AWP |
| Facility | SEC.08-T05N-R66W | | |

| WELLPATH DATA (205 stations) † = interpolated/extrapolated station | | | | | | | | | | |
|--|--------------------|----------------|-------------|-------------------|---------------|--------------|----------------|-----------------|------------------|--------------|
| MD [ft] | Inclination [°] | Azimuth [°] | TVD [ft] | Vert Sect [ft] | North [ft] | East [ft] | Latitude | Longitude | DLS [°/100ft] | Comments |
| 0.00† | 0.000 | 349.390 | 0.00 | 0.00 | 0.00 | 0.00 | 40°24'52.236"N | 104°47'55.248"W | 0.00 | |
| 25.00 | 0.000 | 349.390 | 25.00 | 0.00 | 0.00 | 0.00 | 40°24'52.236"N | 104°47'55.248"W | 0.00 | |
| 108.00 | 1.360 | 349.390 | 107.99 | -0.14 | 0.97 | -0.18 | 40°24'52.246"N | 104°47'55.250"W | 1.64 | FIRST SURVEY |
| 209.00 | 1.380 | 350.150 | 208.96 | -0.46 | 3.34 | -0.61 | 40°24'52.269"N | 104°47'55.256"W | 0.03 | |
| 300.00 | 1.130 | 345.090 | 299.94 | -0.80 | 5.29 | -1.03 | 40°24'52.288"N | 104°47'55.261"W | 0.30 | |
| 391.00 | 0.690 | 254.760 | 390.93 | -1.52 | 6.01 | -1.79 | 40°24'52.295"N | 104°47'55.271"W | 1.46 | |
| 485.00 | 0.480 | 243.570 | 484.93 | -2.43 | 5.69 | -2.69 | 40°24'52.292"N | 104°47'55.283"W | 0.25 | |
| 580.00 | 0.630 | 254.390 | 579.92 | -3.31 | 5.37 | -3.55 | 40°24'52.289"N | 104°47'55.294"W | 0.19 | |
| 675.00 | 0.790 | 259.960 | 674.92 | -4.46 | 5.12 | -4.69 | 40°24'52.287"N | 104°47'55.309"W | 0.18 | |
| 770.00 | 0.570 | 72.340 | 769.91 | -4.66 | 5.15 | -4.89 | 40°24'52.287"N | 104°47'55.311"W | 1.43 | |
| 865.00 | 0.440 | 53.400 | 864.91 | -3.90 | 5.51 | -4.15 | 40°24'52.290"N | 104°47'55.302"W | 0.22 | |
| 960.00 | 1.330 | 39.710 | 959.90 | -2.86 | 6.57 | -3.15 | 40°24'52.301"N | 104°47'55.289"W | 0.96 | |
| 1055.00 | 4.130 | 53.760 | 1054.78 | 0.73 | 9.44 | 0.32 | 40°24'52.329"N | 104°47'55.244"W | 3.01 | |
| 1149.00 | 4.970 | 62.750 | 1148.49 | 7.24 | 13.31 | 6.67 | 40°24'52.368"N | 104°47'55.162"W | 1.17 | |
| 1244.00 | 6.820 | 66.000 | 1242.98 | 16.23 | 17.49 | 15.48 | 40°24'52.409"N | 104°47'55.048"W | 1.98 | |
| 1339.00 | 9.850 | 64.820 | 1336.97 | 28.98 | 23.24 | 27.99 | 40°24'52.466"N | 104°47'54.886"W | 3.19 | |
| 1434.00 | 11.420 | 59.610 | 1430.33 | 44.79 | 31.46 | 43.46 | 40°24'52.547"N | 104°47'54.686"W | 1.94 | |
| 1529.00 | 11.570 | 57.360 | 1523.43 | 61.35 | 41.35 | 59.59 | 40°24'52.645"N | 104°47'54.478"W | 0.50 | |
| 1670.00 | 10.130 | 49.120 | 1661.91 | 83.30 | 57.10 | 80.88 | 40°24'52.800"N | 104°47'54.202"W | 1.50 | |
| 1764.00 | 9.690 | 46.040 | 1754.51 | 95.71 | 68.00 | 92.82 | 40°24'52.908"N | 104°47'54.048"W | 0.73 | |
| 1859.00 | 10.880 | 55.630 | 1847.99 | 109.32 | 78.61 | 105.98 | 40°24'53.013"N | 104°47'53.878"W | 2.19 | |
| 1953.00 | 12.620 | 57.360 | 1940.02 | 125.74 | 89.16 | 121.95 | 40°24'53.117"N | 104°47'53.671"W | 1.89 | |
| 2048.00 | 13.880 | 52.770 | 2032.49 | 144.09 | 101.65 | 139.76 | 40°24'53.240"N | 104°47'53.441"W | 1.73 | |
| 2143.00 | 15.130 | 53.300 | 2124.46 | 163.71 | 115.96 | 158.77 | 40°24'53.382"N | 104°47'53.195"W | 1.32 | |
| 2237.00 | 13.570 | 51.300 | 2215.52 | 182.76 | 130.18 | 177.22 | 40°24'53.522"N | 104°47'52.957"W | 1.74 | |
| 2333.00 | 11.700 | 47.840 | 2309.19 | 199.34 | 143.76 | 193.22 | 40°24'53.657"N | 104°47'52.750"W | 2.10 | |
| 2427.00 | 11.930 | 63.290 | 2401.23 | 215.55 | 154.53 | 208.97 | 40°24'53.763"N | 104°47'52.546"W | 3.36 | |
| 2522.00 | 11.520 | 73.540 | 2494.25 | 233.72 | 161.63 | 226.84 | 40°24'53.833"N | 104°47'52.315"W | 2.23 | |
| 2616.00 | 9.990 | 66.340 | 2586.60 | 250.43 | 167.56 | 243.31 | 40°24'53.892"N | 104°47'52.102"W | 2.16 | |
| 2711.00 | 11.800 | 67.770 | 2679.89 | 267.26 | 174.54 | 259.86 | 40°24'53.961"N | 104°47'51.889"W | 1.93 | |

| REFERENCE WELLPATH IDENTIFICATION | | | |
|-----------------------------------|--------------------------------|----------|--|
| Operator | EXTRACTION OIL & GAS | Slot | SLOT#06 TC-COUNTRY CLUB WEST C3-9-11 (2510'FNL & 1194'FEL SEC.8) Drilled |
| Area | COLORADO | Well | TC-COUNTRY CLUB WEST C3-9-11 |
| Field | WELD COUNTY (NAD83/TRUE NORTH) | Wellbore | TC-COUNTRY CLUB WEST C3-9-11 AWB |
| Facility | SEC.08-T05N-R66W | | |

| WELLPATH DATA (205 stations) | | | | | | | | | | |
|------------------------------|--------------------|----------------|-------------|-------------------|---------------|--------------|----------------|-----------------|------------------|----------|
| MD [ft] | Inclination [°] | Azimuth [°] | TVD [ft] | Vert Sect [ft] | North [ft] | East [ft] | Latitude | Longitude | DLS [°/100ft] | Comments |
| 2899.00 | 11.880 | 83.110 | 2863.93 | 304.66 | 184.14 | 296.87 | 40°24'54.056"N | 104°47'51.410"W | 1.67 | |
| 2994.00 | 14.350 | 73.000 | 2956.46 | 325.82 | 188.76 | 317.84 | 40°24'54.101"N | 104°47'51.139"W | 3.54 | |
| 3088.00 | 14.890 | 69.180 | 3047.42 | 348.56 | 196.45 | 340.27 | 40°24'54.177"N | 104°47'50.849"W | 1.18 | |
| 3183.00 | 12.310 | 68.660 | 3139.75 | 369.74 | 204.48 | 361.12 | 40°24'54.257"N | 104°47'50.579"W | 2.72 | |
| 3278.00 | 12.670 | 57.310 | 3232.51 | 388.33 | 213.79 | 379.32 | 40°24'54.349"N | 104°47'50.344"W | 2.61 | |
| 3373.00 | 11.220 | 55.740 | 3325.46 | 405.20 | 224.62 | 395.73 | 40°24'54.456"N | 104°47'50.132"W | 1.56 | |
| 3467.00 | 12.070 | 50.420 | 3417.52 | 420.82 | 236.03 | 410.86 | 40°24'54.568"N | 104°47'49.936"W | 1.46 | |
| 3562.00 | 12.590 | 45.200 | 3510.33 | 436.41 | 249.66 | 425.86 | 40°24'54.703"N | 104°47'49.742"W | 1.29 | |
| 3657.00 | 12.940 | 49.690 | 3602.99 | 452.47 | 263.84 | 441.32 | 40°24'54.843"N | 104°47'49.542"W | 1.11 | |
| 3751.00 | 13.430 | 61.240 | 3694.53 | 470.58 | 275.90 | 458.92 | 40°24'54.962"N | 104°47'49.315"W | 2.85 | |
| 3846.00 | 16.510 | 58.290 | 3786.29 | 492.27 | 288.31 | 480.08 | 40°24'55.085"N | 104°47'49.041"W | 3.34 | |
| 3940.00 | 19.840 | 58.740 | 3875.59 | 517.92 | 303.61 | 505.09 | 40°24'55.236"N | 104°47'48.718"W | 3.55 | |
| 4035.00 | 20.060 | 58.130 | 3964.89 | 546.25 | 320.58 | 532.70 | 40°24'55.404"N | 104°47'48.361"W | 0.32 | |
| 4130.00 | 19.430 | 57.520 | 4054.30 | 574.14 | 337.66 | 559.87 | 40°24'55.573"N | 104°47'48.010"W | 0.70 | |
| 4224.00 | 16.000 | 60.420 | 4143.83 | 599.23 | 352.46 | 584.33 | 40°24'55.719"N | 104°47'47.694"W | 3.77 | |
| 4318.00 | 13.600 | 59.890 | 4234.71 | 620.57 | 364.40 | 605.16 | 40°24'55.837"N | 104°47'47.424"W | 2.56 | |
| 4411.00 | 11.460 | 57.530 | 4325.49 | 638.26 | 374.85 | 622.42 | 40°24'55.940"N | 104°47'47.201"W | 2.37 | |
| 4506.00 | 9.600 | 55.520 | 4418.89 | 653.16 | 384.40 | 636.91 | 40°24'56.034"N | 104°47'47.014"W | 2.00 | |
| 4600.00 | 10.340 | 54.230 | 4511.47 | 666.87 | 393.77 | 650.22 | 40°24'56.127"N | 104°47'46.842"W | 0.82 | |
| 4695.00 | 8.860 | 39.920 | 4605.15 | 678.93 | 404.36 | 661.83 | 40°24'56.232"N | 104°47'46.692"W | 2.94 | |
| 4884.00 | 11.080 | 54.270 | 4791.31 | 703.96 | 426.14 | 685.92 | 40°24'56.447"N | 104°47'46.380"W | 1.75 | |
| 4978.00 | 12.350 | 63.220 | 4883.36 | 720.68 | 435.94 | 702.23 | 40°24'56.544"N | 104°47'46.169"W | 2.35 | |
| 5073.00 | 11.670 | 66.640 | 4976.28 | 738.92 | 444.33 | 720.12 | 40°24'56.627"N | 104°47'45.938"W | 1.04 | |
| 5167.00 | 10.420 | 67.450 | 5068.53 | 755.79 | 451.36 | 736.70 | 40°24'56.696"N | 104°47'45.724"W | 1.34 | |
| 5262.00 | 12.710 | 69.970 | 5161.60 | 773.83 | 458.24 | 754.46 | 40°24'56.764"N | 104°47'45.494"W | 2.47 | |
| 5356.00 | 11.500 | 74.670 | 5253.51 | 792.83 | 464.26 | 773.21 | 40°24'56.823"N | 104°47'45.252"W | 1.66 | |
| 5450.00 | 9.590 | 62.840 | 5345.93 | 809.09 | 470.31 | 789.22 | 40°24'56.883"N | 104°47'45.045"W | 3.06 | |
| 5545.00 | 9.970 | 50.380 | 5439.56 | 822.84 | 479.17 | 802.59 | 40°24'56.971"N | 104°47'44.872"W | 2.26 | |
| 5639.00 | 13.310 | 59.830 | 5531.62 | 838.92 | 489.80 | 818.22 | 40°24'57.076"N | 104°47'44.670"W | 4.08 | |
| 5734.00 | 12.060 | 59.340 | 5624.30 | 857.36 | 500.35 | 836.21 | 40°24'57.180"N | 104°47'44.437"W | 1.32 | |

| REFERENCE WELLPATH IDENTIFICATION | | | |
|-----------------------------------|--------------------------------|----------|--|
| Operator | EXTRACTION OIL & GAS | Slot | SLOT#06 TC-COUNTRY CLUB WEST C3-9-11 (2510'FNL & 1194'FEL SEC.8) Drilled |
| Area | COLORADO | Well | TC-COUNTRY CLUB WEST C3-9-11 |
| Field | WELD COUNTY (NAD83/TRUE NORTH) | Wellbore | TC-COUNTRY CLUB WEST C3-9-11 AWB |
| Facility | SEC.08-T05N-R66W | | |

| WELLPATH DATA (205 stations) † = interpolated/extrapolated station | | | | | | | | | | |
|--|--------------------|----------------|-------------|-------------------|---------------|--------------|----------------|-----------------|------------------|---|
| MD [ft] | Inclination [°] | Azimuth [°] | TVD [ft] | Vert Sect [ft] | North [ft] | East [ft] | Latitude | Longitude | DLS [°/100ft] | Comments |
| 5828.00 | 11.530 | 52.270 | 5716.32 | 873.69 | 511.11 | 852.09 | 40°24'57.286"N | 104°47'44.232"W | 1.64 | |
| 5922.00 | 8.620 | 50.340 | 5808.86 | 886.99 | 521.36 | 864.95 | 40°24'57.388"N | 104°47'44.066"W | 3.12 | |
| 6016.00 | 9.820 | 40.700 | 5901.65 | 898.09 | 531.93 | 875.60 | 40°24'57.492"N | 104°47'43.928"W | 2.08 | |
| 6111.00 | 14.380 | 54.570 | 5994.53 | 913.55 | 544.92 | 890.51 | 40°24'57.621"N | 104°47'43.735"W | 5.66 | |
| 6205.00 | 12.720 | 56.020 | 6085.92 | 932.18 | 557.47 | 908.60 | 40°24'57.745"N | 104°47'43.501"W | 1.80 | |
| 6299.00 | 11.630 | 56.770 | 6177.80 | 949.15 | 568.45 | 925.11 | 40°24'57.853"N | 104°47'43.288"W | 1.17 | |
| 6393.00 | 11.950 | 62.250 | 6269.82 | 966.10 | 578.17 | 941.65 | 40°24'57.949"N | 104°47'43.074"W | 1.24 | |
| 6488.00 | 12.110 | 67.820 | 6362.74 | 984.38 | 586.52 | 959.58 | 40°24'58.032"N | 104°47'42.842"W | 1.23 | |
| 6582.00 | 12.490 | 68.940 | 6454.58 | 1003.30 | 593.89 | 978.19 | 40°24'58.104"N | 104°47'42.601"W | 0.48 | |
| 6677.00 | 12.690 | 53.740 | 6547.32 | 1021.73 | 603.76 | 996.20 | 40°24'58.202"N | 104°47'42.369"W | 3.48 | |
| 6772.00 | 13.380 | 45.800 | 6639.88 | 1038.61 | 617.59 | 1012.49 | 40°24'58.339"N | 104°47'42.158"W | 2.02 | |
| 6866.00 | 15.270 | 55.010 | 6730.96 | 1057.18 | 632.28 | 1030.44 | 40°24'58.484"N | 104°47'41.926"W | 3.14 | |
| 6961.00 | 18.300 | 61.810 | 6821.92 | 1081.18 | 646.50 | 1053.84 | 40°24'58.624"N | 104°47'41.623"W | 3.80 | |
| 7056.00 | 26.850 | 68.760 | 6909.57 | 1115.01 | 661.35 | 1087.05 | 40°24'58.771"N | 104°47'41.194"W | 9.41 | |
| 7150.00 | 31.130 | 76.310 | 6991.80 | 1158.99 | 674.80 | 1130.48 | 40°24'58.904"N | 104°47'40.633"W | 5.98 | |
| 7245.00 | 38.700 | 82.340 | 7069.67 | 1212.75 | 684.59 | 1183.86 | 40°24'59.001"N | 104°47'39.942"W | 8.75 | |
| 7267.00 | 39.680 | 84.760 | 7086.72 | 1226.62 | 686.15 | 1197.68 | 40°24'59.016"N | 104°47'39.764"W | 8.26 | |
| 7361.00 | 47.310 | 86.840 | 7154.86 | 1291.24 | 690.80 | 1262.15 | 40°24'59.062"N | 104°47'38.930"W | 8.26 | |
| 7456.00 | 60.930 | 88.530 | 7210.41 | 1368.03 | 693.80 | 1338.88 | 40°24'59.092"N | 104°47'37.938"W | 14.41 | |
| 7550.00 | 72.920 | 90.050 | 7247.19 | 1454.30 | 694.82 | 1425.19 | 40°24'59.102"N | 104°47'36.822"W | 12.84 | |
| 7645.00 | 84.700 | 90.380 | 7265.59 | 1547.22 | 694.47 | 1518.22 | 40°24'59.098"N | 104°47'35.620"W | 12.40 | |
| 7739.00 | 90.060 | 89.270 | 7269.89 | 1641.01 | 694.75 | 1612.09 | 40°24'59.101"N | 104°47'34.406"W | 5.82 | LANDING POINT (1821'FNL & 424'FWL, SEC.09) |
| 7781.00† | 89.936 | 89.067 | 7269.89 | 1682.99 | 695.36 | 1654.08 | 40°24'59.107"N | 104°47'33.863"W | 0.57 | CROSSED 460' SETBACK (1821'FNL & 460'FWL, SEC.09) |
| 7834.00 | 89.780 | 88.810 | 7270.02 | 1735.98 | 696.35 | 1707.07 | 40°24'59.116"N | 104°47'33.178"W | 0.57 | |
| 7929.00 | 89.820 | 87.530 | 7270.35 | 1830.97 | 699.38 | 1802.02 | 40°24'59.146"N | 104°47'31.951"W | 1.35 | |
| 8023.00 | 89.880 | 86.670 | 7270.60 | 1924.96 | 704.14 | 1895.90 | 40°24'59.193"N | 104°47'30.737"W | 0.92 | |
| 8212.00 | 88.520 | 88.910 | 7273.24 | 2113.93 | 711.42 | 2084.73 | 40°24'59.265"N | 104°47'28.296"W | 1.39 | |
| 8306.00 | 88.030 | 90.530 | 7276.07 | 2207.81 | 711.88 | 2178.68 | 40°24'59.270"N | 104°47'27.081"W | 1.80 | |
| 8401.00 | 87.840 | 90.090 | 7279.49 | 2302.63 | 711.37 | 2273.62 | 40°24'59.264"N | 104°47'25.854"W | 0.50 | |
| 8496.00 | 90.060 | 91.350 | 7281.23 | 2397.46 | 710.17 | 2368.58 | 40°24'59.253"N | 104°47'24.626"W | 2.69 | |

| REFERENCE WELLPATH IDENTIFICATION | | | |
|-----------------------------------|--------------------------------|----------|--|
| Operator | EXTRACTION OIL & GAS | Slot | SLOT#06 TC-COUNTRY CLUB WEST C3-9-11 (2510'FNL & 1194'FEL SEC.8) Drilled |
| Area | COLORADO | Well | TC-COUNTRY CLUB WEST C3-9-11 |
| Field | WELD COUNTY (NAD83/TRUE NORTH) | Wellbore | TC-COUNTRY CLUB WEST C3-9-11 AWB |
| Facility | SEC.08-T05N-R66W | | |

| WELLPATH DATA (205 stations) | | | | | | | | | | |
|------------------------------|--------------------|----------------|-------------|-------------------|---------------|--------------|----------------|-----------------|------------------|----------|
| MD [ft] | Inclination [°] | Azimuth [°] | TVD [ft] | Vert Sect [ft] | North [ft] | East [ft] | Latitude | Longitude | DLS [°/100ft] | Comments |
| 8590.00 | 89.720 | 91.740 | 7281.41 | 2491.22 | 707.64 | 2462.55 | 40°24'59.227"N | 104°47'23.411"W | 0.55 | |
| 8684.00 | 89.780 | 90.890 | 7281.82 | 2585.01 | 705.48 | 2556.52 | 40°24'59.206"N | 104°47'22.196"W | 0.91 | |
| 8779.00 | 90.550 | 90.130 | 7281.55 | 2679.88 | 704.64 | 2651.52 | 40°24'59.198"N | 104°47'20.968"W | 1.14 | |
| 8873.00 | 90.770 | 91.910 | 7280.47 | 2773.69 | 702.96 | 2745.49 | 40°24'59.181"N | 104°47'19.753"W | 1.91 | |
| 8967.00 | 90.220 | 90.750 | 7279.65 | 2867.47 | 700.78 | 2839.46 | 40°24'59.159"N | 104°47'18.538"W | 1.37 | |
| 9062.00 | 90.370 | 90.140 | 7279.17 | 2962.34 | 700.04 | 2934.46 | 40°24'59.152"N | 104°47'17.310"W | 0.66 | |
| 9156.00 | 90.280 | 90.850 | 7278.63 | 3056.21 | 699.23 | 3028.45 | 40°24'59.144"N | 104°47'16.095"W | 0.76 | |
| 9251.00 | 90.370 | 91.800 | 7278.09 | 3150.99 | 697.04 | 3123.42 | 40°24'59.122"N | 104°47'14.867"W | 1.00 | |
| 9345.00 | 90.460 | 92.880 | 7277.41 | 3244.65 | 693.20 | 3217.34 | 40°24'59.084"N | 104°47'13.653"W | 1.15 | |
| 9439.00 | 90.830 | 91.060 | 7276.35 | 3338.35 | 689.97 | 3311.28 | 40°24'59.052"N | 104°47'12.438"W | 1.98 | |
| 9533.00 | 90.920 | 91.240 | 7274.92 | 3432.15 | 688.08 | 3405.25 | 40°24'59.033"N | 104°47'11.223"W | 0.21 | |
| 9627.00 | 90.890 | 91.370 | 7273.43 | 3525.93 | 685.94 | 3499.21 | 40°24'59.012"N | 104°47'10.008"W | 0.14 | |
| 9721.00 | 90.310 | 90.920 | 7272.45 | 3619.73 | 684.06 | 3593.18 | 40°24'58.993"N | 104°47'08.793"W | 0.78 | |
| 9816.00 | 90.250 | 91.370 | 7271.99 | 3714.54 | 682.16 | 3688.16 | 40°24'58.974"N | 104°47'07.566"W | 0.48 | |
| 9910.00 | 90.370 | 92.220 | 7271.48 | 3808.27 | 679.22 | 3782.12 | 40°24'58.945"N | 104°47'06.351"W | 0.91 | |
| 10004.00 | 92.120 | 92.470 | 7269.43 | 3901.91 | 675.37 | 3876.01 | 40°24'58.907"N | 104°47'05.137"W | 1.88 | |
| 10099.00 | 91.970 | 91.660 | 7266.04 | 3996.54 | 671.95 | 3970.89 | 40°24'58.873"N | 104°47'03.910"W | 0.87 | |
| 10193.00 | 91.850 | 91.770 | 7262.91 | 4090.23 | 669.14 | 4064.79 | 40°24'58.845"N | 104°47'02.696"W | 0.17 | |
| 10288.00 | 90.830 | 91.370 | 7260.69 | 4184.97 | 666.54 | 4159.73 | 40°24'58.819"N | 104°47'01.469"W | 1.15 | |
| 10382.00 | 90.950 | 90.390 | 7259.23 | 4278.79 | 665.10 | 4253.71 | 40°24'58.805"N | 104°47'00.254"W | 1.05 | |
| 10477.00 | 91.850 | 90.270 | 7256.91 | 4373.64 | 664.55 | 4348.68 | 40°24'58.799"N | 104°46'59.026"W | 0.96 | |
| 10571.00 | 91.080 | 89.990 | 7254.51 | 4467.51 | 664.34 | 4442.64 | 40°24'58.797"N | 104°46'57.811"W | 0.87 | |
| 10665.00 | 89.910 | 89.640 | 7253.69 | 4561.43 | 664.64 | 4536.64 | 40°24'58.800"N | 104°46'56.596"W | 1.30 | |
| 10759.00 | 89.880 | 89.870 | 7253.87 | 4655.35 | 665.04 | 4630.64 | 40°24'58.803"N | 104°46'55.381"W | 0.25 | |
| 10853.00 | 89.970 | 90.300 | 7253.99 | 4749.26 | 664.90 | 4724.64 | 40°24'58.802"N | 104°46'54.166"W | 0.47 | |
| 10947.00 | 92.180 | 94.550 | 7252.22 | 4842.86 | 660.93 | 4818.51 | 40°24'58.762"N | 104°46'52.952"W | 5.10 | |
| 11042.00 | 92.220 | 93.130 | 7248.58 | 4937.21 | 654.57 | 4913.22 | 40°24'58.699"N | 104°46'51.727"W | 1.49 | |
| 11136.00 | 91.010 | 91.650 | 7245.93 | 5030.82 | 650.65 | 5007.10 | 40°24'58.660"N | 104°46'50.514"W | 2.03 | |
| 11231.00 | 89.750 | 92.140 | 7245.30 | 5125.54 | 647.51 | 5102.04 | 40°24'58.629"N | 104°46'49.286"W | 1.42 | |
| 11325.00 | 89.850 | 92.240 | 7245.63 | 5219.22 | 643.92 | 5195.98 | 40°24'58.594"N | 104°46'48.072"W | 0.15 | |

| REFERENCE WELLPATH IDENTIFICATION | | | |
|-----------------------------------|--------------------------------|----------|--|
| Operator | EXTRACTION OIL & GAS | Slot | SLOT#06 TC-COUNTRY CLUB WEST C3-9-11 (2510'FNL & 1194'FEL SEC.8) Drilled |
| Area | COLORADO | Well | TC-COUNTRY CLUB WEST C3-9-11 |
| Field | WELD COUNTY (NAD83/TRUE NORTH) | Wellbore | TC-COUNTRY CLUB WEST C3-9-11 AWB |
| Facility | SEC.08-T05N-R66W | | |

| WELLPATH DATA (205 stations) | | | | | | | | | | |
|------------------------------|--------------------|----------------|-------------|-------------------|---------------|--------------|----------------|-----------------|------------------|----------|
| MD [ft] | Inclination [°] | Azimuth [°] | TVD [ft] | Vert Sect [ft] | North [ft] | East [ft] | Latitude | Longitude | DLS [°/100ft] | Comments |
| 11419.00 | 90.150 | 90.570 | 7245.63 | 5313.00 | 641.61 | 5289.94 | 40°24'58.571"N | 104°46'46.857"W | 1.81 | |
| 11514.00 | 89.880 | 88.680 | 7245.60 | 5407.93 | 642.24 | 5384.94 | 40°24'58.577"N | 104°46'45.629"W | 2.01 | |
| 11608.00 | 90.000 | 87.800 | 7245.70 | 5501.92 | 645.12 | 5478.89 | 40°24'58.605"N | 104°46'44.414"W | 0.94 | |
| 11703.00 | 88.770 | 86.310 | 7246.72 | 5596.90 | 650.00 | 5573.76 | 40°24'58.653"N | 104°46'43.188"W | 2.03 | |
| 11798.00 | 88.890 | 85.610 | 7248.66 | 5691.85 | 656.70 | 5668.50 | 40°24'58.719"N | 104°46'41.963"W | 0.75 | |
| 11893.00 | 90.090 | 87.610 | 7249.51 | 5786.83 | 662.31 | 5763.32 | 40°24'58.774"N | 104°46'40.737"W | 2.46 | |
| 11988.00 | 89.350 | 88.940 | 7249.97 | 5881.82 | 665.17 | 5858.28 | 40°24'58.802"N | 104°46'39.509"W | 1.60 | |
| 12082.00 | 89.480 | 89.040 | 7250.93 | 5975.78 | 666.83 | 5952.26 | 40°24'58.818"N | 104°46'38.294"W | 0.17 | |
| 12177.00 | 89.450 | 88.950 | 7251.82 | 6070.74 | 668.49 | 6047.24 | 40°24'58.834"N | 104°46'37.066"W | 0.10 | |
| 12272.00 | 89.600 | 88.980 | 7252.60 | 6165.71 | 670.21 | 6142.22 | 40°24'58.851"N | 104°46'35.838"W | 0.16 | |
| 12367.00 | 89.540 | 89.440 | 7253.32 | 6260.66 | 671.52 | 6237.21 | 40°24'58.864"N | 104°46'34.610"W | 0.49 | |
| 12461.00 | 89.510 | 89.840 | 7254.10 | 6354.59 | 672.11 | 6331.20 | 40°24'58.870"N | 104°46'33.395"W | 0.43 | |
| 12556.00 | 89.480 | 89.900 | 7254.93 | 6449.50 | 672.33 | 6426.20 | 40°24'58.871"N | 104°46'32.167"W | 0.07 | |
| 12651.00 | 89.600 | 89.540 | 7255.70 | 6544.43 | 672.79 | 6521.19 | 40°24'58.876"N | 104°46'30.939"W | 0.40 | |
| 12746.00 | 89.320 | 89.390 | 7256.59 | 6639.37 | 673.68 | 6616.19 | 40°24'58.884"N | 104°46'29.711"W | 0.33 | |
| 12840.00 | 89.230 | 87.040 | 7257.78 | 6733.35 | 676.61 | 6710.13 | 40°24'58.913"N | 104°46'28.496"W | 2.50 | |
| 12934.00 | 89.420 | 86.630 | 7258.89 | 6827.33 | 681.79 | 6803.98 | 40°24'58.964"N | 104°46'27.283"W | 0.48 | |
| 13028.00 | 89.420 | 87.990 | 7259.84 | 6921.33 | 686.21 | 6897.86 | 40°24'59.007"N | 104°46'26.069"W | 1.45 | |
| 13123.00 | 89.420 | 89.270 | 7260.80 | 7016.30 | 688.48 | 6992.83 | 40°24'59.029"N | 104°46'24.841"W | 1.35 | |
| 13217.00 | 89.880 | 90.100 | 7261.38 | 7110.23 | 688.99 | 7086.83 | 40°24'59.034"N | 104°46'23.626"W | 1.01 | |
| 13311.00 | 90.030 | 90.210 | 7261.45 | 7204.13 | 688.74 | 7180.83 | 40°24'59.032"N | 104°46'22.411"W | 0.20 | |
| 13405.00 | 89.850 | 90.400 | 7261.55 | 7298.01 | 688.24 | 7274.82 | 40°24'59.026"N | 104°46'21.195"W | 0.28 | |
| 13500.00 | 89.910 | 89.690 | 7261.75 | 7392.92 | 688.16 | 7369.82 | 40°24'59.025"N | 104°46'19.967"W | 0.75 | |
| 13594.00 | 89.970 | 91.630 | 7261.85 | 7486.77 | 687.08 | 7463.81 | 40°24'59.014"N | 104°46'18.752"W | 2.06 | |
| 13688.00 | 90.150 | 93.900 | 7261.75 | 7580.36 | 682.55 | 7557.70 | 40°24'58.969"N | 104°46'17.538"W | 2.42 | |
| 13782.00 | 90.250 | 93.840 | 7261.42 | 7673.78 | 676.20 | 7651.48 | 40°24'58.906"N | 104°46'16.326"W | 0.12 | |
| 13877.00 | 89.290 | 92.810 | 7261.80 | 7768.28 | 670.69 | 7746.32 | 40°24'58.852"N | 104°46'15.100"W | 1.48 | |
| 13971.00 | 89.290 | 93.120 | 7262.97 | 7861.85 | 665.83 | 7840.19 | 40°24'58.803"N | 104°46'13.886"W | 0.33 | |
| 14161.00 | 89.910 | 92.880 | 7264.29 | 8050.96 | 655.89 | 8029.92 | 40°24'58.704"N | 104°46'11.433"W | 0.35 | |
| 14255.00 | 90.890 | 89.550 | 7263.64 | 8144.75 | 653.90 | 8123.88 | 40°24'58.684"N | 104°46'10.218"W | 3.69 | |

| REFERENCE WELLPATH IDENTIFICATION | | | |
|-----------------------------------|--------------------------------|----------|--|
| Operator | EXTRACTION OIL & GAS | Slot | SLOT#06 TC-COUNTRY CLUB WEST C3-9-11 (2510'FNL & 1194'FEL SEC.8) Drilled |
| Area | COLORADO | Well | TC-COUNTRY CLUB WEST C3-9-11 |
| Field | WELD COUNTY (NAD83/TRUE NORTH) | Wellbore | TC-COUNTRY CLUB WEST C3-9-11 AWB |
| Facility | SEC.08-T05N-R66W | | |

| WELLPATH DATA (205 stations) | | | | | | | | | | |
|------------------------------|--------------------|----------------|-------------|-------------------|---------------|--------------|----------------|-----------------|------------------|----------|
| MD [ft] | Inclination [°] | Azimuth [°] | TVD [ft] | Vert Sect [ft] | North [ft] | East [ft] | Latitude | Longitude | DLS [°/100ft] | Comments |
| 14349.00 | 90.280 | 85.350 | 7262.68 | 8238.72 | 658.08 | 8217.76 | 40°24'58.725"N | 104°46'09.005"W | 4.51 | |
| 14444.00 | 90.180 | 86.880 | 7262.29 | 8333.69 | 664.51 | 8312.54 | 40°24'58.789"N | 104°46'07.779"W | 1.61 | |
| 14538.00 | 90.280 | 90.830 | 7261.92 | 8427.64 | 666.39 | 8406.50 | 40°24'58.807"N | 104°46'06.565"W | 4.20 | |
| 14633.00 | 90.310 | 91.060 | 7261.43 | 8522.47 | 664.82 | 8501.49 | 40°24'58.791"N | 104°46'05.337"W | 0.24 | |
| 14729.00 | 90.220 | 89.300 | 7260.98 | 8618.36 | 664.52 | 8597.48 | 40°24'58.788"N | 104°46'04.095"W | 1.84 | |
| 14823.00 | 90.250 | 87.600 | 7260.60 | 8712.34 | 667.07 | 8691.44 | 40°24'58.813"N | 104°46'02.881"W | 1.81 | |
| 14918.00 | 90.280 | 90.090 | 7260.16 | 8807.30 | 668.98 | 8786.42 | 40°24'58.831"N | 104°46'01.653"W | 2.62 | |
| 15013.00 | 90.400 | 90.230 | 7259.59 | 8902.20 | 668.71 | 8881.41 | 40°24'58.828"N | 104°46'00.425"W | 0.19 | |
| 15107.00 | 90.340 | 91.310 | 7258.99 | 8996.04 | 667.45 | 8975.40 | 40°24'58.815"N | 104°45'59.210"W | 1.15 | |
| 15202.00 | 90.310 | 92.100 | 7258.45 | 9090.78 | 664.62 | 9070.36 | 40°24'58.787"N | 104°45'57.982"W | 0.83 | |
| 15297.00 | 90.220 | 92.150 | 7258.01 | 9185.47 | 661.10 | 9165.29 | 40°24'58.752"N | 104°45'56.755"W | 0.11 | |
| 15390.00 | 90.830 | 92.860 | 7257.16 | 9278.11 | 657.04 | 9258.20 | 40°24'58.711"N | 104°45'55.553"W | 1.01 | |
| 15485.00 | 91.010 | 92.650 | 7255.63 | 9372.69 | 652.47 | 9353.08 | 40°24'58.666"N | 104°45'54.327"W | 0.29 | |
| 15580.00 | 90.950 | 92.340 | 7254.01 | 9467.32 | 648.34 | 9447.97 | 40°24'58.625"N | 104°45'53.100"W | 0.33 | |
| 15675.00 | 91.480 | 90.970 | 7251.99 | 9562.04 | 645.59 | 9542.91 | 40°24'58.597"N | 104°45'51.873"W | 1.55 | |
| 15769.00 | 91.050 | 92.200 | 7249.92 | 9655.78 | 642.99 | 9636.85 | 40°24'58.571"N | 104°45'50.658"W | 1.39 | |
| 15864.00 | 90.920 | 90.920 | 7248.28 | 9750.52 | 640.41 | 9731.80 | 40°24'58.545"N | 104°45'49.431"W | 1.35 | |
| 16054.00 | 90.280 | 89.370 | 7246.29 | 9940.30 | 639.93 | 9921.78 | 40°24'58.540"N | 104°45'46.974"W | 0.88 | |
| 16148.00 | 90.280 | 89.070 | 7245.83 | 10034.26 | 641.21 | 10015.77 | 40°24'58.552"N | 104°45'45.759"W | 0.32 | |
| 16243.00 | 90.280 | 88.510 | 7245.37 | 10129.23 | 643.21 | 10110.75 | 40°24'58.572"N | 104°45'44.531"W | 0.59 | |
| 16338.00 | 90.280 | 88.020 | 7244.91 | 10224.22 | 646.09 | 10205.70 | 40°24'58.600"N | 104°45'43.304"W | 0.52 | |
| 16432.00 | 90.250 | 89.200 | 7244.47 | 10318.20 | 648.37 | 10299.67 | 40°24'58.622"N | 104°45'42.089"W | 1.26 | |
| 16527.00 | 90.370 | 90.040 | 7243.96 | 10413.13 | 649.00 | 10394.67 | 40°24'58.628"N | 104°45'40.861"W | 0.89 | |
| 16621.00 | 90.370 | 90.910 | 7243.35 | 10507.00 | 648.22 | 10488.66 | 40°24'58.619"N | 104°45'39.646"W | 0.93 | |
| 16716.00 | 89.540 | 91.430 | 7243.42 | 10601.80 | 646.28 | 10583.64 | 40°24'58.600"N | 104°45'38.418"W | 1.03 | |
| 16811.00 | 90.490 | 93.810 | 7243.40 | 10696.41 | 641.94 | 10678.53 | 40°24'58.557"N | 104°45'37.191"W | 2.70 | |
| 16905.00 | 90.250 | 93.040 | 7242.79 | 10789.91 | 636.32 | 10772.36 | 40°24'58.501"N | 104°45'35.978"W | 0.86 | |
| 17000.00 | 88.000 | 92.010 | 7244.24 | 10884.52 | 632.14 | 10867.25 | 40°24'58.459"N | 104°45'34.751"W | 2.60 | |
| 17094.00 | 87.910 | 89.650 | 7247.60 | 10978.29 | 630.78 | 10961.17 | 40°24'58.445"N | 104°45'33.537"W | 2.51 | |
| 17189.00 | 87.910 | 89.030 | 7251.06 | 11073.18 | 631.87 | 11056.10 | 40°24'58.455"N | 104°45'32.309"W | 0.65 | |

| REFERENCE WELLPATH IDENTIFICATION | | | |
|-----------------------------------|--------------------------------|----------|--|
| Operator | EXTRACTION OIL & GAS | Slot | SLOT#06 TC-COUNTRY CLUB WEST C3-9-11 (2510'FNL & 1194'FEL SEC.8) Drilled |
| Area | COLORADO | Well | TC-COUNTRY CLUB WEST C3-9-11 |
| Field | WELD COUNTY (NAD83/TRUE NORTH) | Wellbore | TC-COUNTRY CLUB WEST C3-9-11 AWB |
| Facility | SEC.08-T05N-R66W | | |

| WELLPATH DATA (205 stations) | | | | | | | | | | |
|------------------------------|--------------------|----------------|-------------|-------------------|---------------|--------------|----------------|-----------------|------------------|---|
| MD [ft] | Inclination [°] | Azimuth [°] | TVD [ft] | Vert Sect [ft] | North [ft] | East [ft] | Latitude | Longitude | DLS [°/100ft] | Comments |
| 17283.00 | 87.850 | 89.010 | 7254.54 | 11167.08 | 633.48 | 11150.03 | 40°24'58.471"N | 104°45'31.095"W | 0.07 | |
| 17378.00 | 90.090 | 88.890 | 7256.25 | 11262.03 | 635.22 | 11244.99 | 40°24'58.488"N | 104°45'29.867"W | 2.36 | |
| 17472.00 | 90.060 | 87.800 | 7256.13 | 11356.02 | 637.93 | 11338.95 | 40°24'58.514"N | 104°45'28.653"W | 1.16 | |
| 17567.00 | 89.850 | 88.780 | 7256.20 | 11451.01 | 640.77 | 11433.90 | 40°24'58.542"N | 104°45'27.425"W | 1.05 | |
| 17662.00 | 89.970 | 89.130 | 7256.35 | 11545.98 | 642.50 | 11528.89 | 40°24'58.558"N | 104°45'26.197"W | 0.39 | |
| 17756.00 | 89.750 | 90.210 | 7256.58 | 11639.91 | 643.04 | 11622.89 | 40°24'58.563"N | 104°45'24.982"W | 1.17 | |
| 17851.00 | 89.940 | 90.800 | 7256.84 | 11734.77 | 642.21 | 11717.88 | 40°24'58.555"N | 104°45'23.754"W | 0.65 | |
| 17946.00 | 89.880 | 90.390 | 7256.98 | 11829.63 | 641.22 | 11812.88 | 40°24'58.544"N | 104°45'22.525"W | 0.44 | |
| 18041.00 | 88.800 | 90.050 | 7258.08 | 11924.52 | 640.85 | 11907.87 | 40°24'58.540"N | 104°45'21.297"W | 1.19 | |
| 18136.00 | 88.770 | 91.240 | 7260.09 | 12019.35 | 639.78 | 12002.84 | 40°24'58.529"N | 104°45'20.070"W | 1.25 | |
| 18230.00 | 89.880 | 92.140 | 7261.20 | 12113.09 | 637.01 | 12096.79 | 40°24'58.501"N | 104°45'18.855"W | 1.52 | |
| 18324.00 | 89.970 | 92.000 | 7261.32 | 12206.79 | 633.62 | 12190.73 | 40°24'58.467"N | 104°45'17.640"W | 0.18 | |
| 18419.00 | 90.370 | 91.070 | 7261.04 | 12301.55 | 631.07 | 12285.69 | 40°24'58.442"N | 104°45'16.413"W | 1.07 | |
| 18513.00 | 90.890 | 90.250 | 7260.01 | 12395.40 | 629.99 | 12379.68 | 40°24'58.431"N | 104°45'15.198"W | 1.03 | |
| 18608.00 | 89.630 | 89.130 | 7259.58 | 12490.32 | 630.50 | 12474.67 | 40°24'58.435"N | 104°45'13.970"W | 1.77 | |
| 18703.00 | 88.650 | 89.660 | 7261.00 | 12585.26 | 631.51 | 12569.65 | 40°24'58.445"N | 104°45'12.742"W | 1.17 | |
| 18798.00 | 89.660 | 85.900 | 7262.40 | 12680.23 | 635.19 | 12664.55 | 40°24'58.481"N | 104°45'11.515"W | 4.10 | |
| 18987.00 | 93.080 | 87.300 | 7257.89 | 12869.12 | 646.39 | 12853.13 | 40°24'58.590"N | 104°45'09.076"W | 1.96 | |
| 19082.00 | 91.880 | 87.130 | 7253.78 | 12964.03 | 651.00 | 12947.93 | 40°24'58.635"N | 104°45'07.851"W | 1.28 | |
| 19366.00 | 90.520 | 94.370 | 7247.82 | 13247.31 | 647.28 | 13231.65 | 40°24'58.597"N | 104°45'04.183"W | 2.59 | |
| 19461.00 | 90.150 | 92.940 | 7247.26 | 13341.75 | 641.23 | 13326.45 | 40°24'58.537"N | 104°45'02.957"W | 1.55 | |
| 19556.00 | 90.400 | 91.570 | 7246.81 | 13436.42 | 637.49 | 13421.38 | 40°24'58.499"N | 104°45'01.730"W | 1.47 | |
| 19745.00 | 90.430 | 91.270 | 7245.44 | 13624.97 | 632.81 | 13610.31 | 40°24'58.452"N | 104°44'59.287"W | 0.16 | |
| 20029.00 | 90.280 | 88.360 | 7243.68 | 13908.70 | 633.72 | 13894.27 | 40°24'58.460"N | 104°44'55.616"W | 1.03 | LAST SURVEY (2075'FNL & 2098'FWL, SEC.09) |
| 20368.00 | 90.280 | 88.360 | 7242.02 | 14247.66 | 643.43 | 14233.13 | 40°24'58.554"N | 104°44'51.235"W | 0.00 | PROJECTION TO BIT (2066'FNL & 2437'FWL, SEC.09) |



Actual Wellpath Report

TC-COUNTRY CLUB WEST C3-9-11 AWP

Page 9 of 12



| REFERENCE WELLPATH IDENTIFICATION | | | |
|-----------------------------------|--------------------------------|----------|--|
| Operator | EXTRACTION OIL & GAS | Slot | SLOT#06 TC-COUNTRY CLUB WEST C3-9-11 (2510'FNL & 1194'FEL SEC.8) Drilled |
| Area | COLORADO | Well | TC-COUNTRY CLUB WEST C3-9-11 |
| Field | WELD COUNTY (NAD83/TRUE NORTH) | Wellbore | TC-COUNTRY CLUB WEST C3-9-11 AWB |
| Facility | SEC.08-T05N-R66W | | |

| HOLE & CASING SECTIONS - Ref Wellbore: TC-COUNTRY CLUB WEST C3-9-11 AWB Ref Wellpath: TC-COUNTRY CLUB WEST C3-9-11 AWP | | | | | | | | | |
|---|------------------|----------------|------------------|-------------------|-----------------|-------------------|-------------------|-----------------|-----------------|
| String/Diameter | Start MD [ft] | End MD [ft] | Interval [ft] | Start TVD [ft] | End TVD [ft] | Start N/S [ft] | Start E/W [ft] | End N/S [ft] | End E/W [ft] |
| 13.5in Open Hole | 25.00 | 1618.00 | 1593.00 | 25.00 | 1610.76 | 0.00 | 0.00 | 51.18 | 73.62 |
| 9.625in Casing Surface | 25.00 | 1585.00 | 1560.00 | 25.00 | 1578.35 | 0.00 | 0.00 | 47.49 | 68.65 |
| 8.5in Open Hole | 1618.00 | 20365.00 | 18747.00 | 1610.76 | 7242.04 | 51.18 | 73.62 | 643.34 | 14230.13 |



Actual Wellpath Report

TC-COUNTRY CLUB WEST C3-9-11 AWP

Page 10 of 12



| REFERENCE WELLPATH IDENTIFICATION | | | |
|-----------------------------------|--------------------------------|----------|--|
| Operator | EXTRACTION OIL & GAS | Slot | SLOT#06 TC-COUNTRY CLUB WEST C3-9-11 (2510'FNL & 1194'FEL SEC.8) Drilled |
| Area | COLORADO | Well | TC-COUNTRY CLUB WEST C3-9-11 |
| Field | WELD COUNTY (NAD83/TRUE NORTH) | Wellbore | TC-COUNTRY CLUB WEST C3-9-11 AWB |
| Facility | SEC.08-T05N-R66W | | |

| TARGETS | | | | | | | | |
|--|-------------|---------------|--------------|----------------------|-----------------------|----------------|-----------------|---------|
| Name | TVD [ft] | North [ft] | East [ft] | Grid East [US ft] | Grid North [US ft] | Latitude | Longitude | Shape |
| COUNTRY CLUB WEST SPACING UNIT | 1.00 | 40.07 | 0.00 | 3195280.72 | 1394658.65 | 40°24'52.632"N | 104°47'55.248"W | polygon |
| SEC.08-T05N-R66W | 1.00 | 40.07 | 0.00 | 3195280.72 | 1394658.65 | 40°24'52.632"N | 104°47'55.248"W | polygon |
| SEC.09-T05N-R66W | 1.00 | 40.07 | 0.00 | 3195280.72 | 1394658.65 | 40°24'52.632"N | 104°47'55.248"W | polygon |
| SEC.10-T05N-R66W | 1.00 | 40.07 | 0.00 | 3195280.72 | 1394658.65 | 40°24'52.632"N | 104°47'55.248"W | polygon |
| SEC.11-T05N-R66W | 1.00 | 40.07 | 0.00 | 3195280.72 | 1394658.65 | 40°24'52.632"N | 104°47'55.248"W | polygon |
| TC-COUNTRY CLUB WEST C3-9-11 BHL REV-2 (2082'FNL & 2486'FWL SEC.11) | 7270.00 | 627.11 | 14281.96 | 3209557.01 | 1395358.59 | 40°24'58.392"N | 104°44'50.604"W | point |
| TC-COUNTRY CLUB WEST C3-9-11 LP REV-2 (1835'FNL & 460'FWL SEC.9) | 7270.00 | 681.32 | 1648.45 | 3196923.98 | 1395312.89 | 40°24'58.968"N | 104°47'33.936"W | point |
| TC-COUNTRY CLUB WEST C3-9-11 BHL REV-1 (2082'FNL & 2486'FWL SEC.11) | 7304.00 | 627.11 | 14281.96 | 3209557.01 | 1395358.59 | 40°24'58.392"N | 104°44'50.604"W | point |
| TC-COUNTRY CLUB WEST C3-9-11 LP REV-1 (1835'FNL & 460'FWL SEC.9) | 7304.00 | 681.32 | 1648.45 | 3196923.98 | 1395312.89 | 40°24'58.968"N | 104°47'33.936"W | point |
| COUNTRY CLUB WEST SPACING UNIT 460' SETBACKS | 7305.00 | 40.07 | 0.00 | 3195280.72 | 1394658.65 | 40°24'52.632"N | 104°47'55.248"W | polygon |



Actual Wellpath Report

TC-COUNTRY CLUB WEST C3-9-11 AWP

Page 11 of 12



| REFERENCE WELLPATH IDENTIFICATION | | | |
|-----------------------------------|--------------------------------|----------|--|
| Operator | EXTRACTION OIL & GAS | Slot | SLOT#06 TC-COUNTRY CLUB WEST C3-9-11 (2510'FNL & 1194'FEL SEC.8) Drilled |
| Area | COLORADO | Well | TC-COUNTRY CLUB WEST C3-9-11 |
| Field | WELD COUNTY (NAD83/TRUE NORTH) | Wellbore | TC-COUNTRY CLUB WEST C3-9-11 AWB |
| Facility | SEC.08-T05N-R66W | | |

| WELLPATH COMPOSITION - Ref Wellbore: TC-COUNTRY CLUB WEST C3-9-11 AWB | | | | Ref Wellpath: TC-COUNTRY CLUB WEST C3-9-11 AWP |
|---|----------------|--|---|--|
| Start MD [ft] | End MD [ft] | Positional Uncertainty Model | Log Name/Comment | Wellbore |
| 25.00 | 1529.00 | Custom BHI NaviTrak (Standard Rotating) (Rockies 0.03Gt model) | BHI NAVITRAK MWD, STD ROTATING, ROCKIES GT 13 1/2<108-1529> | TC-COUNTRY CLUB WEST C3-9-11 AWB |
| 1529.00 | 7267.00 | Custom BHI NaviTrak (Standard Rotating) (Rockies 0.03Gt model) | BHI/NAVITRAK MWD; STD ROTATING; ROCKIES 8 1/2" Hole <1670'-7267'> | TC-COUNTRY CLUB WEST C3-9-11 AWB |
| 7267.00 | 20029.00 | BHI AutoTrak Curve (Standard) | BHI/ATC (Short, Rockies) <7361'-20029'> | TC-COUNTRY CLUB WEST C3-9-11 AWB |
| 20029.00 | 20368.00 | Blind Drilling (std) | Projection to bit | TC-COUNTRY CLUB WEST C3-9-11 AWB |



Actual Wellpath Report

TC-COUNTRY CLUB WEST C3-9-11 AWP

Page 12 of 12



| REFERENCE WELLPATH IDENTIFICATION | | | |
|-----------------------------------|--------------------------------|----------|--|
| Operator | EXTRACTION OIL & GAS | Slot | SLOT#06 TC-COUNTRY CLUB WEST C3-9-11 (2510'FNL & 1194'FEL SEC.8) Drilled |
| Area | COLORADO | Well | TC-COUNTRY CLUB WEST C3-9-11 |
| Field | WELD COUNTY (NAD83/TRUE NORTH) | Wellbore | TC-COUNTRY CLUB WEST C3-9-11 AWB |
| Facility | SEC.08-T05N-R66W | | |

| WELLPATH COMMENTS | | | | |
|-------------------|--------------------|----------------|-------------|---|
| MD [ft] | Inclination [°] | Azimuth [°] | TVD [ft] | Comment |
| 108.00 | 1.360 | 349.390 | 107.99 | FIRST SURVEY |
| 7739.00 | 90.060 | 89.270 | 7269.89 | LANDING POINT (1821'FNL & 424'FWL, SEC.09) |
| 7781.00 | 89.936 | 89.067 | 7269.89 | CROSSED 460' SETBACK (1821'FNL & 460'FWL, SEC.09) |
| 20029.00 | 90.280 | 88.360 | 7243.68 | LAST SURVEY (2075'FNL & 2098'FWL, SEC.09) |
| 20368.00 | 90.280 | 88.360 | 7242.02 | PROJECTION TO BIT (2066'FNL & 2437'FWL, SEC.09) |