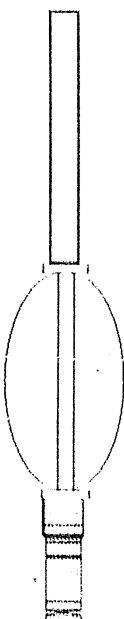


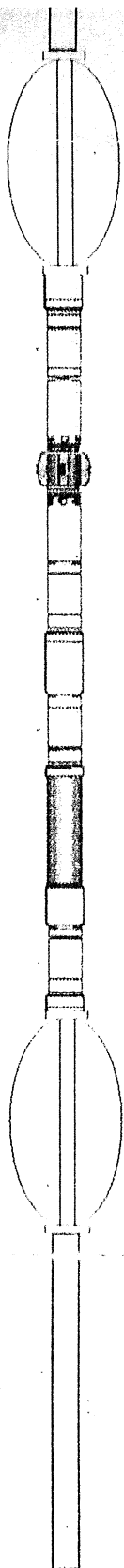
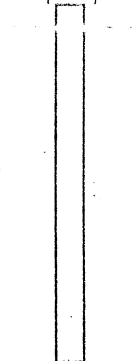
WIRELINE SERVICES

Company	ENCANA OIL & GAS (USA) INC	Company	ENCANA OIL & GAS (USA) INC
Well	VESSELS 24-19	Well	VESSELS 24-19
Field	WATTENBERG	Field	WATTENBERG
County	WELD	County	WELD
State	CO	State	CO
Location:	APL#	Other Services	
	SHL 1527 FSL 3 1053 FVL NW SW		
	BHL 560 FSL 3 1981 FVL		
	SEC 19 T1P III RGE 68W		
Permanent Datum	GL	Elevation	5061
Log Measured From	NB		
Coring Measured From	NB		
Date	JANUARY 16 2007		
Run Number	ONE		
Depth Collar	9600		
Depth Logger	8582		
Bottom Logged Interval	5519		
Top Log Interval	SURFACE		
Open Hole Size			
Type Fluid	WATER		
Density / Viscosity			
Max Recorded Temp	NOT RECORDED		
Estimated Cement Top			
Time Well Ready			
Time Logger on Bottom			
Equipment Number	579		
Location	STEEPLANDS		
Recorded By	DTM/UTS		
Witnessed By	BROADBENT		
Run Number	Butchley Record		
Bit	From	To	Size
Casing Record	Size	Depth	Top
Surface String			Bottom
Prod String			
Production String	4 1/2"		
Liner			

Interpretations are opinions based on inferences from electrical or other measurements and we cannot and do not guarantee the accuracy or correctness of any interpretation, and we shall not, except in the case of gross or willful negligence on our part, be liable or responsible for any loss, costs, damages or expenses incurred or sustained by anyone resulting from any interpretation made by any of our officers, agents or employees. These interpretations are also subject to our general terms and conditions set out in our current Price Schedule.

Comments

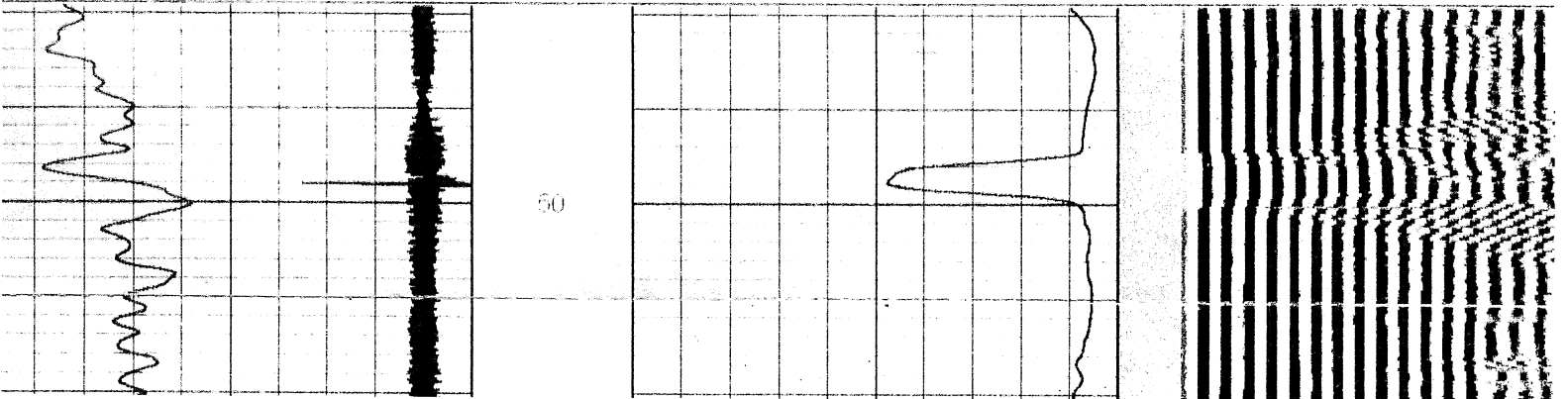
Sensor	Offset (ft)	Schematic	Description	Length (ft)	OD (in)	Wt (lb)
			CCL-S_101 (101)	2.00	1.00	11.00
CCL CENT	18.71 18.71		CENT-TEKCO (101)	2.75	2.75	10.00

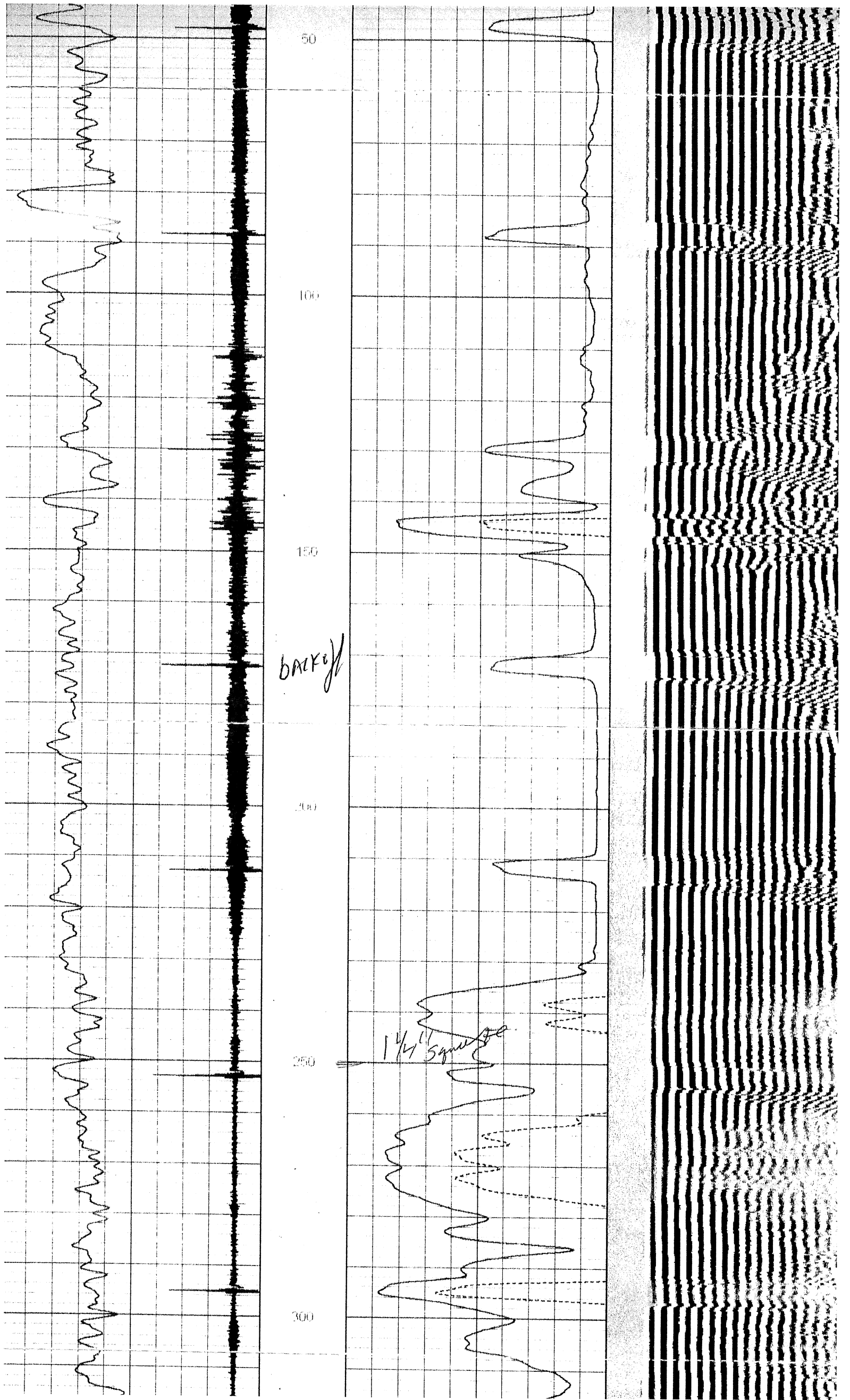
CCL CENT	18.71 18.71		CENT-TEKCO (101)	2.75	2.75	10.00
WVFS1	11.94		SCBL TEKCO-CT (101) TEKCO 2.75 RIB - CT	2.75	2.75	100.00
WVFS2	11.94					
WVFS3	11.94					
WVFS4	11.94					
WVFS5	11.94					
WVFS6	11.94					
WVFS7	11.94					
WVFS8	11.94					
WVF3FT	11.19					
WVF5FT	10.19					
WVFCAL CENT	6.90 6.90		CENT-TEKCO (102)	2.75	2.75	10.00
GR	1.50		GR 191 (101)	4.17	1.69	25.00

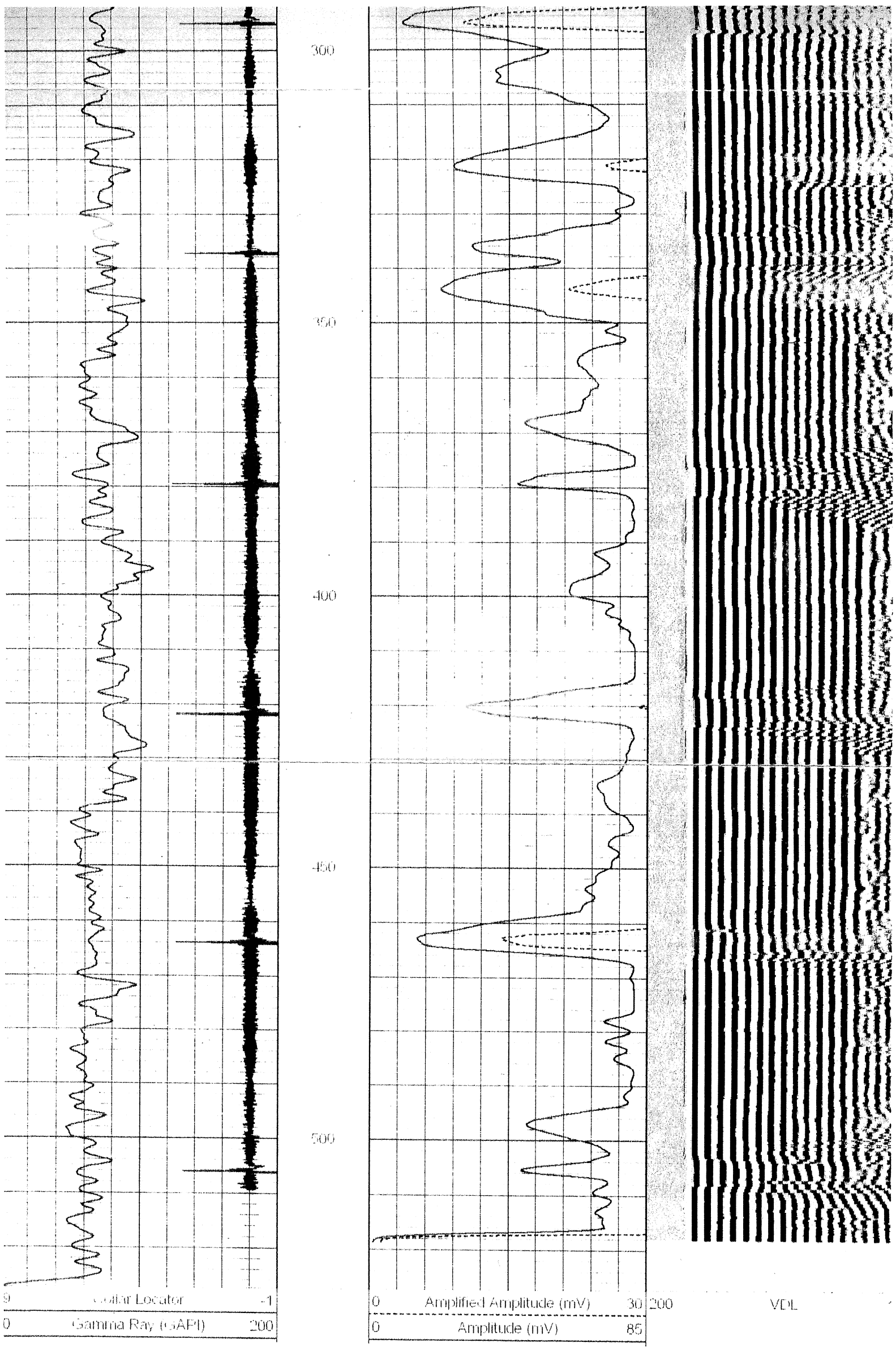
Datasetvessels2419.db; field/well/run1/pass4
 Total Length21.63 ft
 Total Weight164.00 lb
 O.D.2.75 in

Database Filec:\warrior\data\2419.db
 Dataset Pathname:pass3
 Presentation Format:scdl_dr
 Dataset Creation:Tue Jan 16 16:35:06 2007 by Log Std Casedhole 06040
 Charted by:Depth in Feet scaled 1:240

Collar Locator	-1	0	Amplified Amplitude (mV)	30	200	VDL	1
Gamma Ray (GAPI)	200	0	Amplitude (mV)	65			

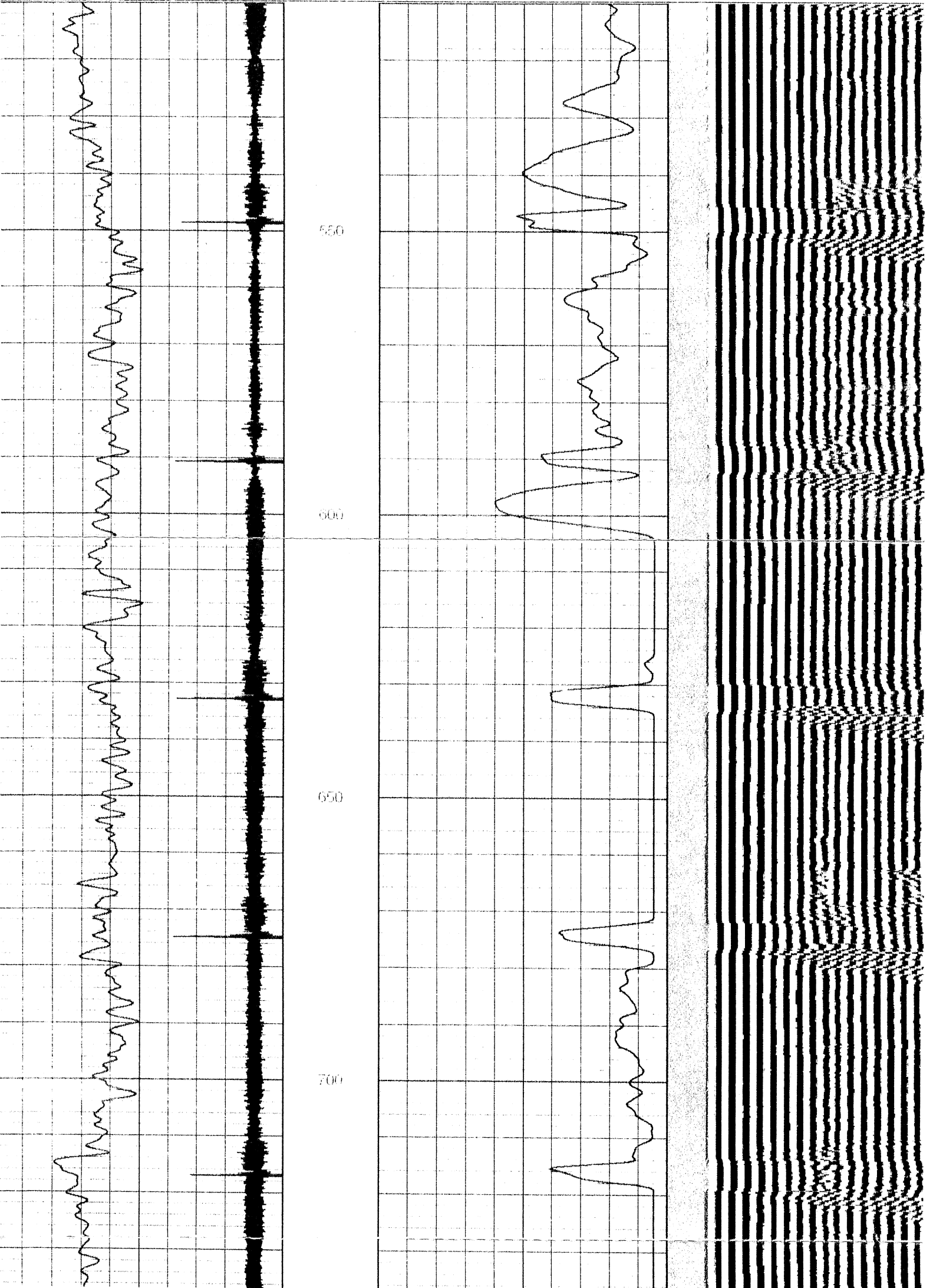


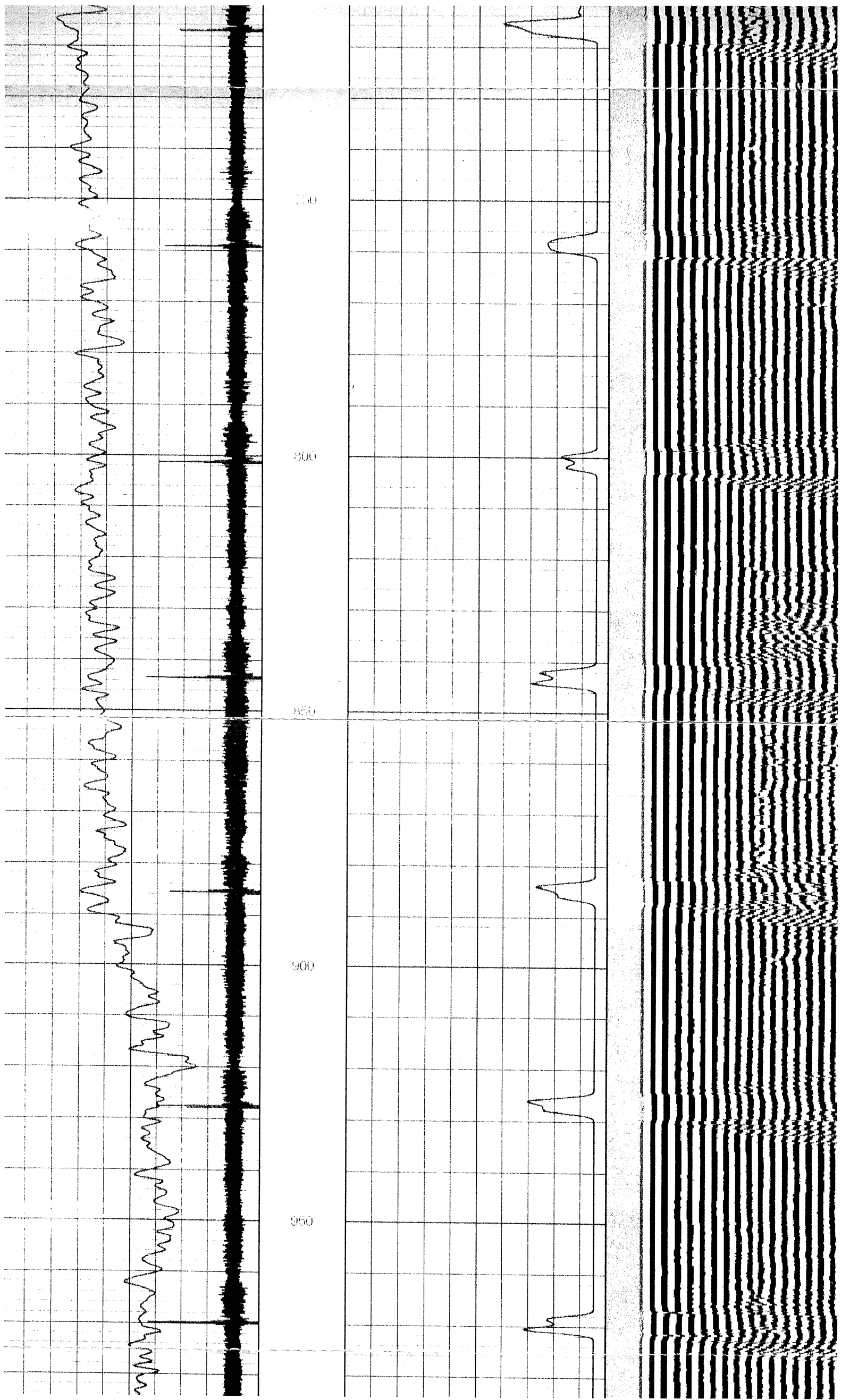


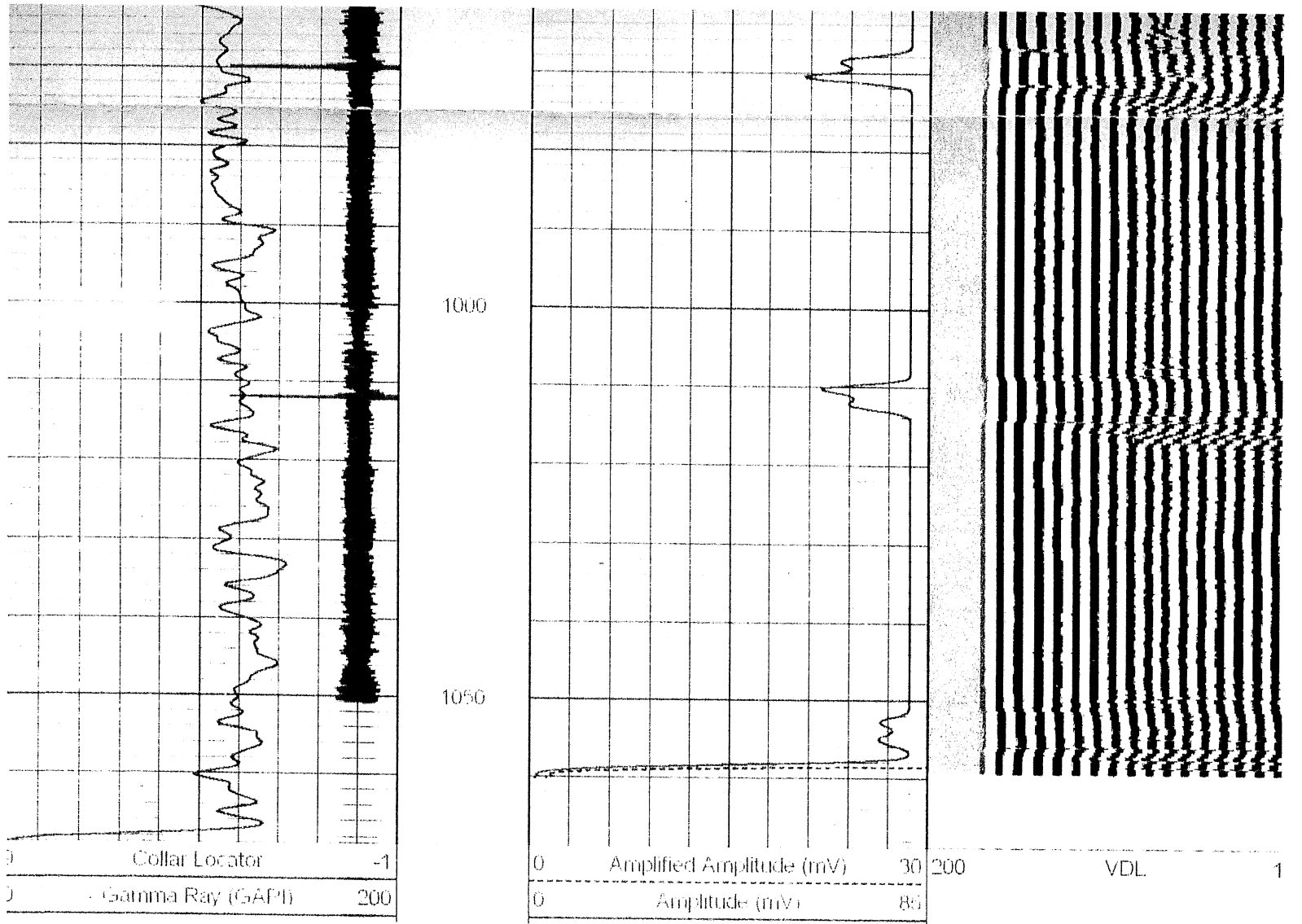


Database File: c:\warrior\data\2419.db
Dataset Pathname: pass2
Presentation Format: scd_dr
Dataset Creation: Tue Jan 16 15:18:17 2007 by Log Std Casedhole 06040
Charted by: Depth in Feet scaled 1:240

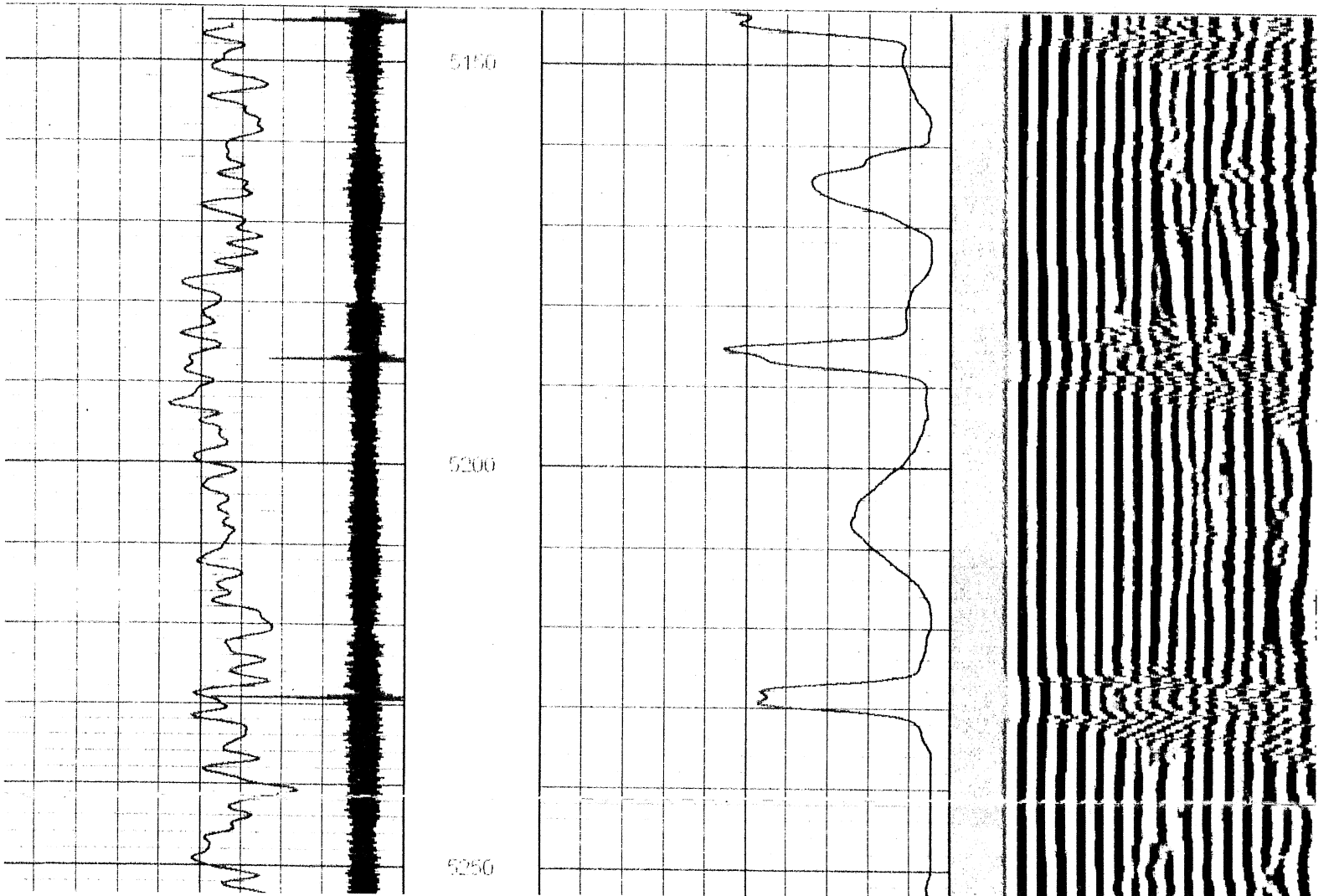
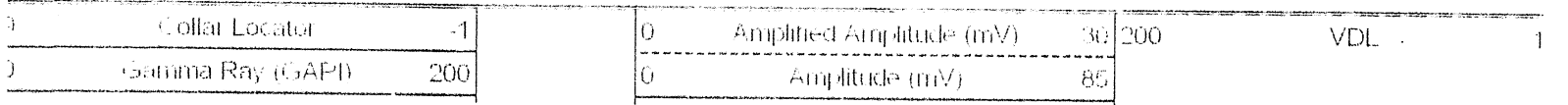
0	Collar Locator	-1	0	Amplified Amplitude (mV)	30	200	VDL	1
0	Gamma Ray (GAPI)	200	0	Amplitude (mV)	85			

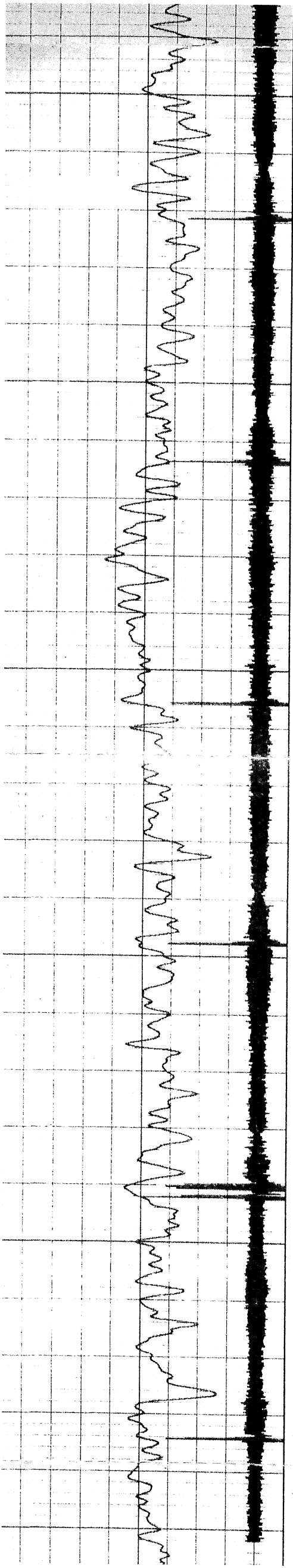






Database File: c:\wamond\data\2-419.dh
Dataset Pathname: pass1
Presentation Format: 11.dh
Dataset Creation: Tue Jan 16 15:00:36 2007 by Log Std Casedhole 06a40
Charted by: Depth in Feet scaled 1:240





5250

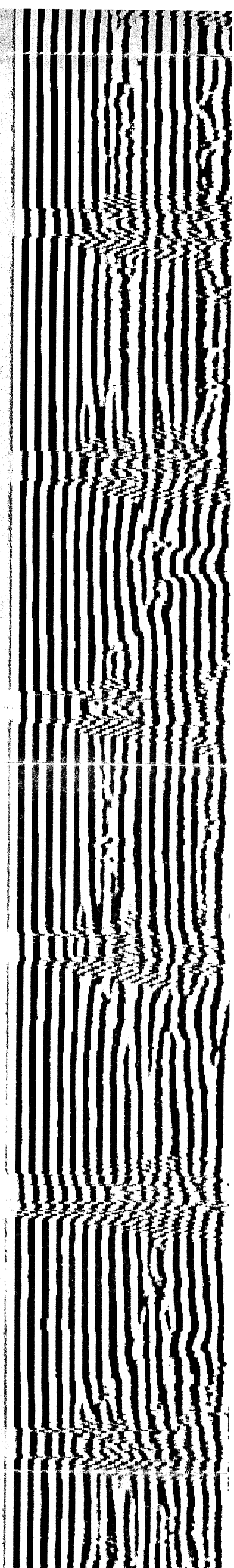
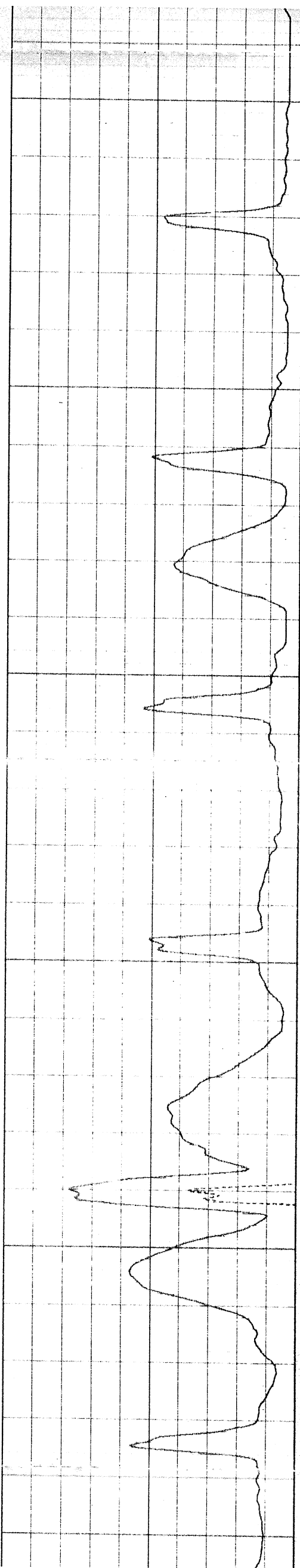
5300

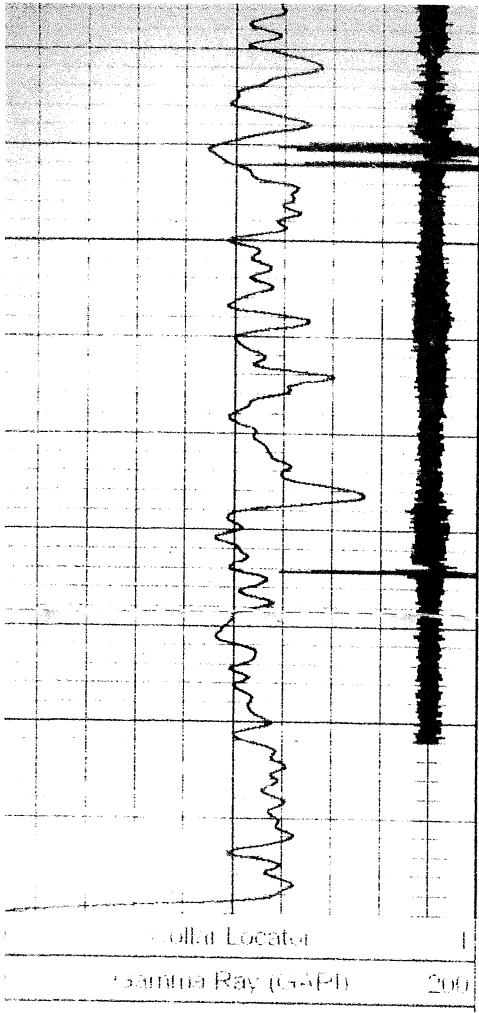
5350

5400

5450

5500





5450

5500

