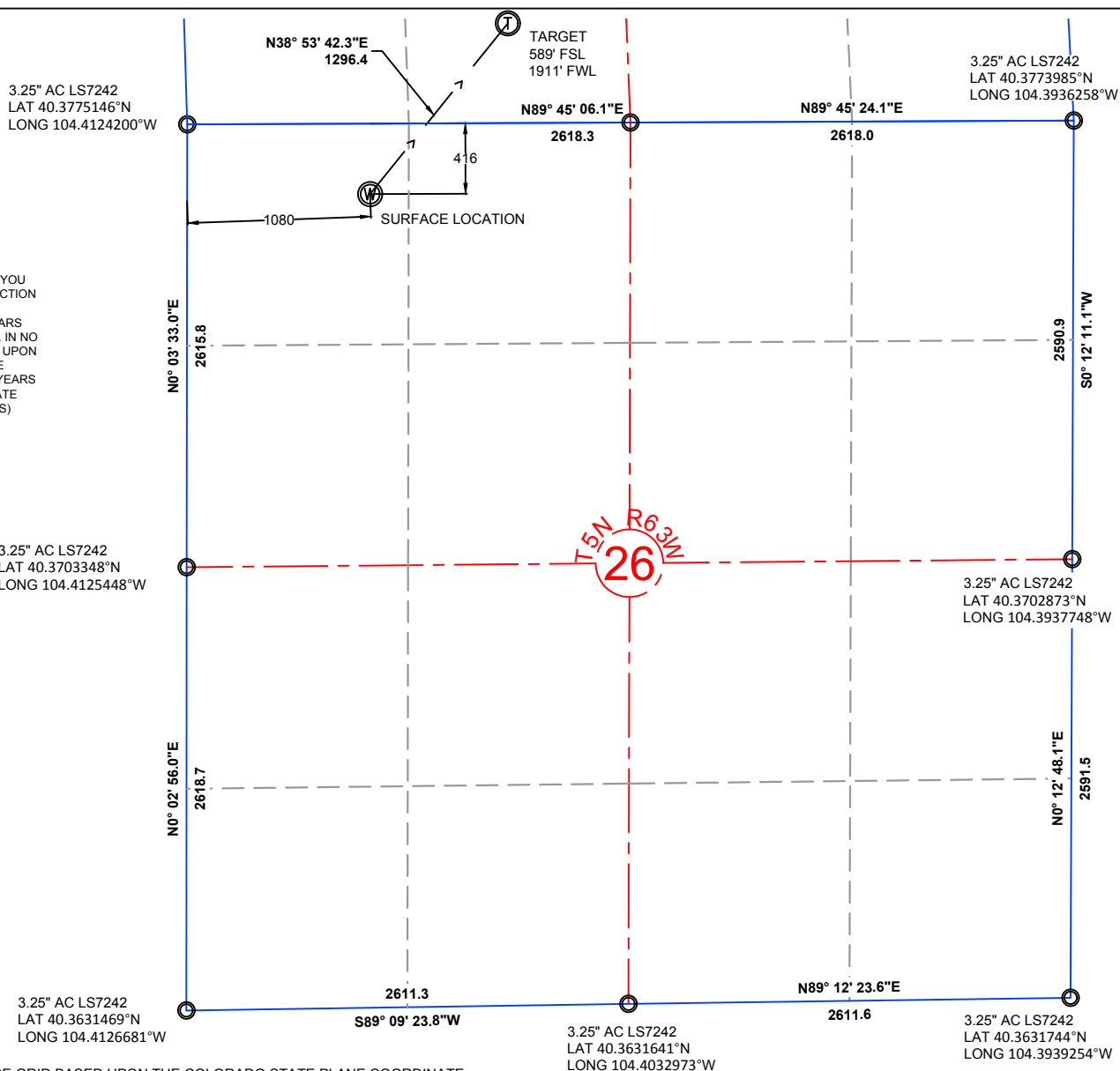


NOTE: UNDER COLORADO LAW, YOU MUST COMMENCE ANY LEGAL ACTION BASED ON ANY DEFECT IN THIS CERTIFICATE WITHIN THREE YEARS AFTER DEFECT IS DISCOVERED. IN NO EVENT MAY ANY ACTION BASED UPON ANY DEFECT IN THIS SURVEY BE COMMENCED MORE THAN TEN YEARS AFTER DATE OF THIS CERTIFICATE SHOWN HEREON. (13-80105 C.R.S.)



NOTES:

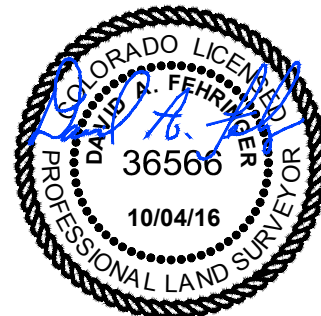
- ALL BEARINGS ARE GRID BASED UPON THE COLORADO STATE PLANE COORDINATE SYSTEM, NORTH ZONE, NAD83(2011) DERIVED FROM POST-PROCESSED STATIC GPS OBSERVATIONS.
- DISTANCES ARE ON GRID
- VERTICAL DATUM IS NAVD88 BASED UPON GPS OBSERVATIONS
- PDOP VALUE EQUALS 1.7.
- GPS OPERATOR: MARC MAYER.
- GROUND ELEVATION AT WELLHEAD = 4566.7'
- ALL SECTION LENGTHS ARE MEASURED DISTANCES UNLESS NOTED BY (R), RECORD BEARING AND DISTANCE.
- NEAREST CULTURAL DISTANCES
 - BUILDINGS: 2606' +/-
 - BUILDING UNIT: 2606' +/-
 - HIGH OCCUPANCY BUILDING UNIT: 5280' +/-
 - DESIGNATED OUTSIDE ACTIVITY AREA: 5280' +/-
 - PUBLIC ROAD: 4928' +/-
 - ABOVE GROUND UTILITY: 290' +/-
 - RAILROAD: 5280' +/-
 - PROPERTY LINE: 416' +/-

5	NAD 83		STATE PLANE COORDINATES	
24-21-23HNC	LATITUDE	LONGITUDE	NORTHING	EASTING
SURFACE	40.3763481	-104.4085618	1381815.44	3304075.22
TARGET 1	40.3790899	-104.4055957	1382824.39	3304889.20
BOTTOM HOLE	40.3907435	-104.4060155	1387067.96	3304719.88

PAD CORNERS	NAD 83	
SNP F-26 PAD	LATITUDE	LONGITUDE
NW	40.3769834	-104.4096486
NE	40.3770010	-104.4076955
SE	40.3755729	-104.4077670
SW	40.3755170	-104.4092354
SW	40.3758688	-104.4096607

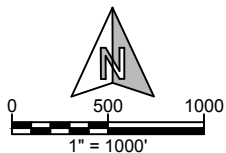
CERTIFICATE OF SURVEYOR:

I, DAVID A. FEHRINGER OF LANDER, WYOMING HEREBY CERTIFY THAT THIS WELL LOCATION CERTIFICATE WAS PREPARED FROM NOTES TAKEN DURING AN ACTUAL SURVEY ON JUNE 28, 2017; AND THAT IT CORRECTLY SHOWS THE DRILLING LOCATION OF BONANZA CREEK ENERGY, INC. NORTH PLATTE 24-21-23HNC AS STAKED DURING SAID SURVEY. THIS MAP DOES NOT REPRESENT A BOUNDARY SURVEY OR AN IMPROVEMENT LOCATION PLAT AND SHOULD NOT BE USED FOR THE ESTABLISHMENT OF BOUNDARY LINES.



WILLIAM H. SMITH & ASSOCIATES, Inc.
155 N. 1st Street
Lander, WY 82520
Phone: 307-335-5646

Drawn By: MAM
Job No.: 15043
Checked By: DAF
Date: 10/04/16
Revision: SURFACE AND TARGET EDIT 7-19-17 -MAM



IF BAR LENGTH DOES NOT EQUAL 1"(ONE INCH), THIS PAGE WAS NOT PLOTTED TO THE INTENDED SCALE.

LOCATION CERTIFICATE

**NORTH PLATTE
24-21-23HNC
SURFACE**
NW¼ NW¼, SECTION 26,
T.5N., R.63W., 6th PM
WELD COUNTY, COLORADO



410 17th Street
Denver, CO 80202
(720) 440-6100

SHEET

1

OF

2

3" AC LS4845
LAT 40.3920612°N
LONG 104.4127538°W

N89° 36' 08.0"E

N89° 53' 50.0"E

3.25" AC LS7242
LAT 40.3919489°N
LONG 104.394386°W

NOTE: UNDER COLORADO LAW, YOU
MUST COMMENCE ANY LEGAL ACTION
BASED ON ANY DEFECT IN THIS
CERTIFICATE WITHIN THREE YEARS
AFTER DEFECT IS DISCOVERED. IN NO
EVENT MAY ANY ACTION BASED UPON
ANY DEFECT IN THIS SURVEY BE
COMMENCED MORE THAN TEN YEARS
AFTER DATE OF THIS CERTIFICATE
SHOWN HEREON. (13-80105 C.R.S.)

3.25" AC LS7242
LAT 40.3847889°N
LONG 104.4125871°W

3.25" AC LS7242
LAT 40.3775146°N
LONG 104.4124200°W

NOTES:

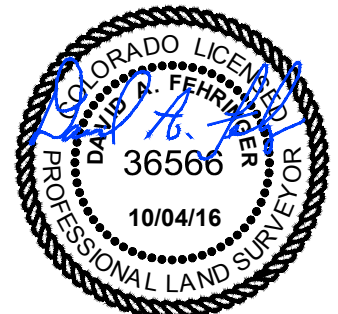
- ALL BEARINGS ARE GRID BASED UPON THE COLORADO STATE PLANE COORDINATE SYSTEM, NORTH ZONE, NAD83(2011) DERIVED FROM POST-PROCESSED STATIC GPS OBSERVATIONS.
- DISTANCES ARE ON GRID
- VERTICAL DATUM IS NAVD88 BASED UPON GPS OBSERVATIONS
- PDP VALUE EQUALS 1.7.
- GPS OPERATOR: MARC MAYER.
- GROUND ELEVATION AT WELLHEAD = 4566.7'
- ALL SECTION LENGTHS ARE MEASURED DISTANCES UNLESS NOTED BY (R), RECORD BEARING AND DISTANCE.
- NEAREST CULTURAL DISTANCES
BUILDINGS: 2606' +/-
BUILDING UNIT: 2606' +/-
HIGH OCCUPANCY BUILDING UNIT: 5280'+
DESIGNATED OUTSIDE ACTIVITY AREA: 5280'+
PUBLIC ROAD: 4928' +/-
ABOVE GROUND UTILITY: 290' +/-
RAILROAD: 5280'+
PROPERTY LINE: 416' +/-

5	NAD 83		STATE PLANE COORDINATES	
24-21-23HNC	LATITUDE	LONGITUDE	NORTHING	EASTING
SURFACE	40.3763481	-104.4085618	1381815.44	3304075.22
TARGET 1	40.3790899	-104.4055957	1382824.39	3304889.20
BOTTOM HOLE	40.3907435	-104.4060155	1387067.96	3304719.88

PAD CORNERS		NAD 83	
SNP F-26 PAD		LATITUDE	LONGITUDE
NW		40.3769834	-104.4096486
NE		40.3770010	-104.4076955
SE		40.3755729	-104.4077670
SW		40.3755170	-104.4092354
SW		40.3758688	-104.4096607

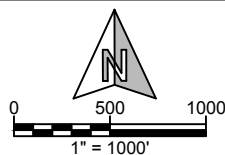
CERTIFICATE OF SURVEYOR:

I, DAVID A. FEHRINGER OF LANDER, WYOMING HEREBY CERTIFY THAT THIS WELL LOCATION CERTIFICATE WAS PREPARED FROM NOTES TAKEN DURING AN ACTUAL SURVEY ON JUNE 28, 2017; AND THAT IT CORRECTLY SHOWS THE DRILLING LOCATION OF BONANZA CREEK ENERGY, INC. NORTH PLATTE 24-21-23HNC AS STAKED DURING SAID SURVEY. THIS MAP DOES NOT REPRESENT A BOUNDARY SURVEY OR AN IMPROVEMENT LOCATION PLAT AND SHOULD NOT BE USED FOR THE ESTABLISHMENT OF BOUNDARY LINES.



**WILLIAM H. SMITH &
ASSOCIATES, Inc.**
155 N. 1st Street
Lander, WY 82520
Phone: 307-335-5646

Drawn By: MAM
Job No.: 15043
Checked By: DAF
Date: 10/04/16
Revision: SURFACE AND TARGET EDIT 7-19-17 -MAM



IF BAR LENGTH DOES NOT EQUAL
1"(ONE INCH), THIS PAGE WAS NOT
PLOTTED TO THE INTENDED SCALE.

LOCATION CERTIFICATE

**NORTH PLATTE
24-21-23HNC
BOTTOM HOLE**
NE¼ NW¼, SECTION 23,
T.5N., R.63W., 6th PM
WELD COUNTY, COLORADO



410 17th Street
Denver, CO 80202
(720) 440-6100

SHEET
2
OF
2