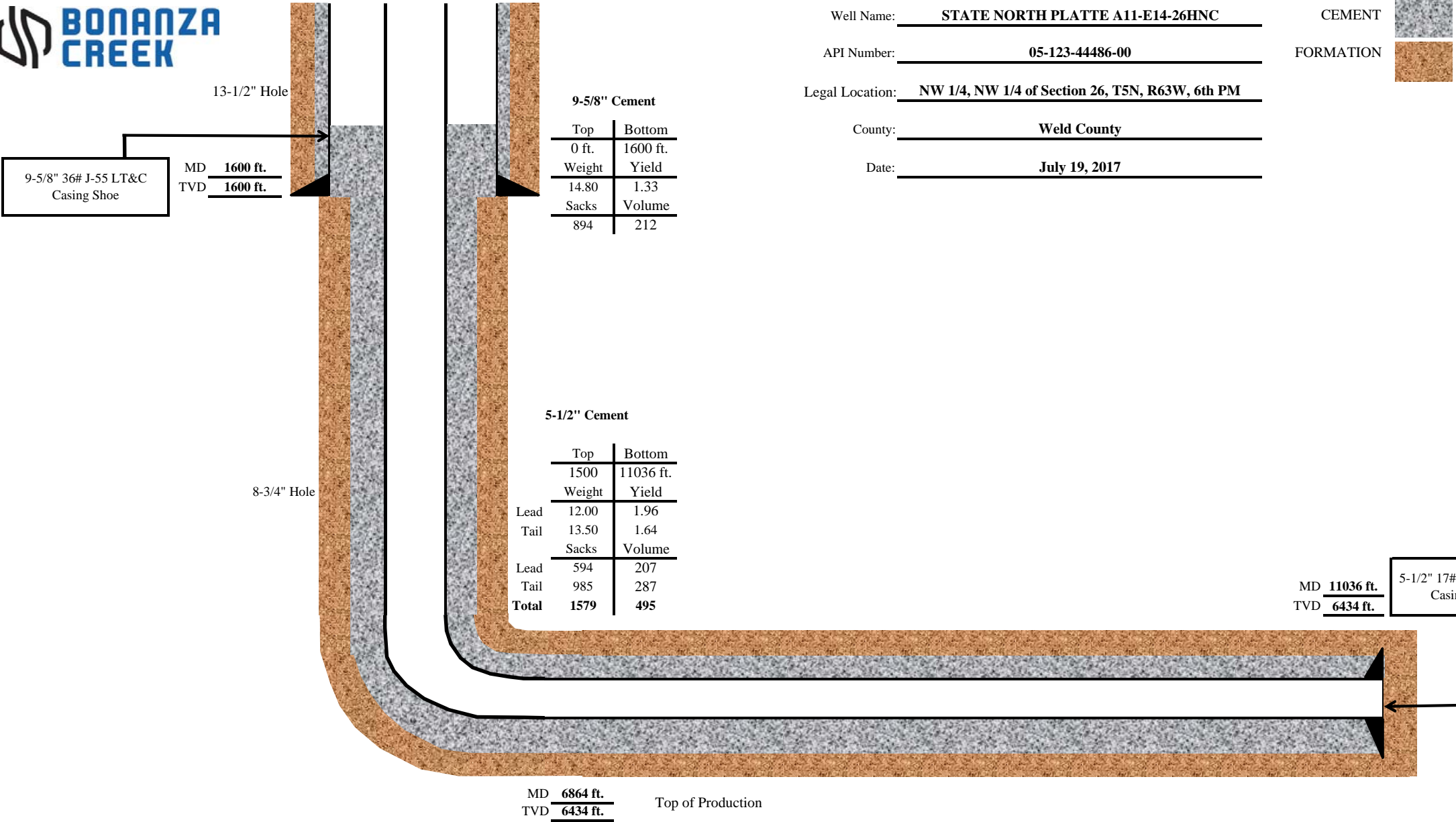


PROPOSED WELLBORE SCHEMATIC



9-5/8" Cement

Top	Bottom
0 ft.	1600 ft.
Weight	Yield
14.80	1.33
Sacks	Volume
894	212

5-1/2" Cement

	Top	Bottom
	1500	11036 ft.
	Weight	Yield
Lead	12.00	1.96
Tail	13.50	1.64
	Sacks	Volume
Lead	594	207
Tail	985	287
Total	1579	495

Well Name: STATE NORTH PLATTE A11-E14-26HNC

API Number: 05-123-44486-00

Legal Location: NW 1/4, NW 1/4 of Section 26, T5N, R63W, 6th PM

County: Weld County

Date: July 19, 2017

