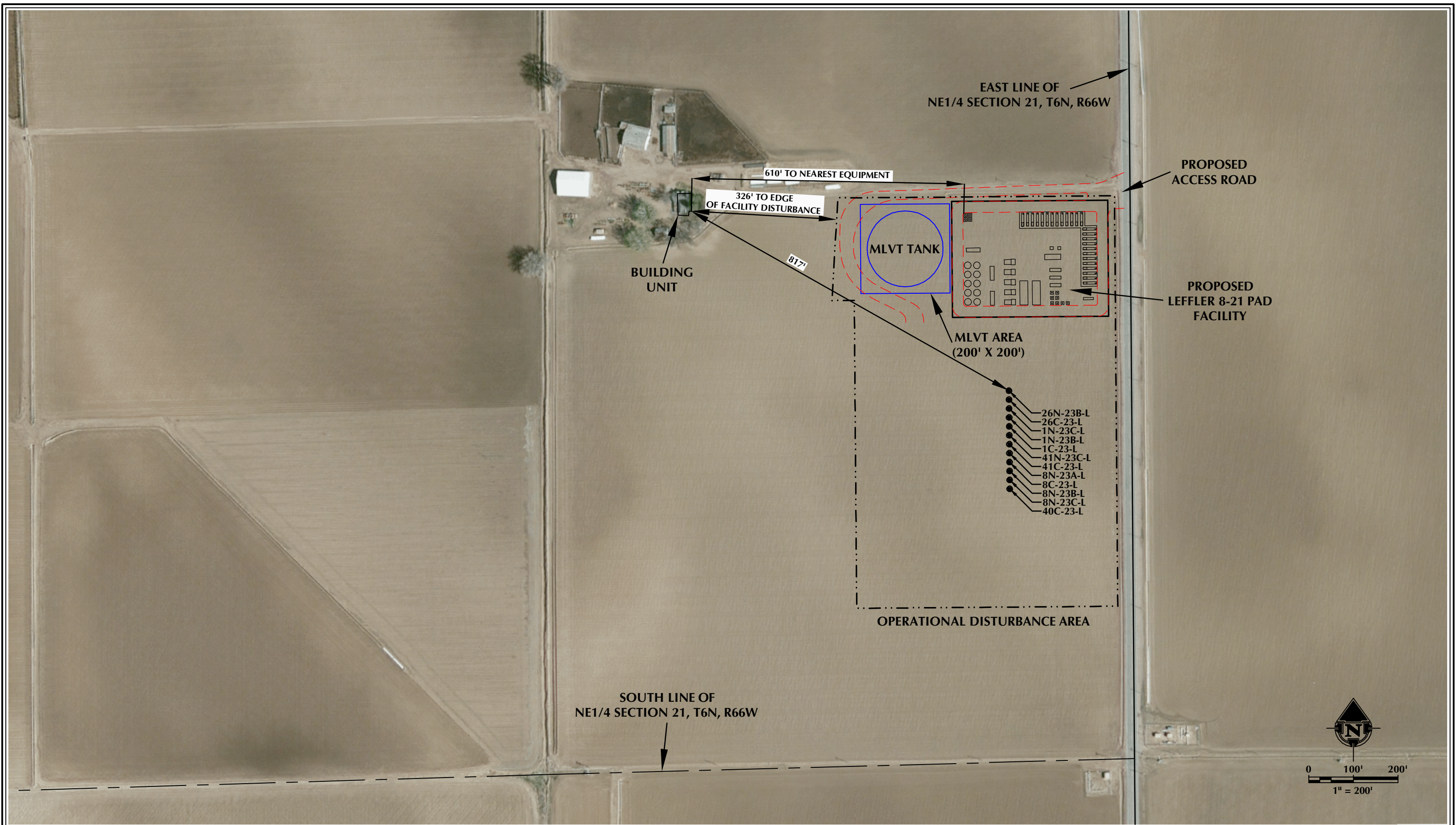


K:\SYNERGY RESOURCES\2016_120_LEFFLER_T6N_R66W_21DWS\LEFFLER_SOUTH\LEFFLER.dwg, 6/22/2017 11:43:37 AM, .jfile



NOTES: 1. EQUIPMENT PLACEMENT IS APPROXIMATE AND SUBJECT TO MINOR MODIFICATION DUE TO SPECIFIC CIRCUMSTANCES.	DATA SOURCES: - AERIAL COURTESY OF ESRI, INC.	 609 CONSULTING, LLC LOVELAND OFFICE 1635 Foxtrail Drive, Suite 204 Loveland, Colorado 80538 Phone 970-776-4331 SHERIDAN OFFICE 1095 Saberton Avenue Sheridan, Wyoming 82801 Phone 307-674-0609	 SRC ENERGY 1675 Broadway, Suite 2600 Denver, Colorado 80202	SCALE: 1" = 200' DATE SURVEYED: 11/29/16 DATE: 1/9/17 DRAFTER: CDJ REVISED: 6/21/17	FACILITY LOCATION DRAWING (A) LEFFLER 8-21 PAD LOCATED IN SECTION 21, T6N, R66W, 6TH P.M. WELD COUNTY, COLORADO
---	---	---	--	--	--

FACILITY LOCATION DRAWING (C)
LEFFLER 8-21 PAD
PRODUCTION FACILITY & MISC. EQUIPMENT

# MLVTs	1
# VRUs	5
# Compressors	2
# LACT Units	3
# Combustors	4
# Gas Busters	3
# Oil Tanks	8
# Water Tanks	2
# Generators	1
# Meter Runs	2
# Single Separators	25
# Two Phase Separators	8
# Automation	1
# Instrument Buildings	2 Instrument Air
# Gas Meter	1
* No existing facility equipment within disturbance area *	

WELLS

Proposed:

LEFFLER 26N-23B-L, LEFFLER 26C-23-L, LEFFLER 1N-23C-L,
LEFFLER 1N-23B-L, LEFFLER 1C-23-L, LEFFLER 41N-23C-L,
LEFFLER 41C-23-L, LEFFLER 8N-23A-L, LEFFLER 8C-23-L,
LEFFLER 8N-23B-L, LEFFLER 8N-23C-L & LEFFLER 40C-23-L

* No existing wells within disturbance area *