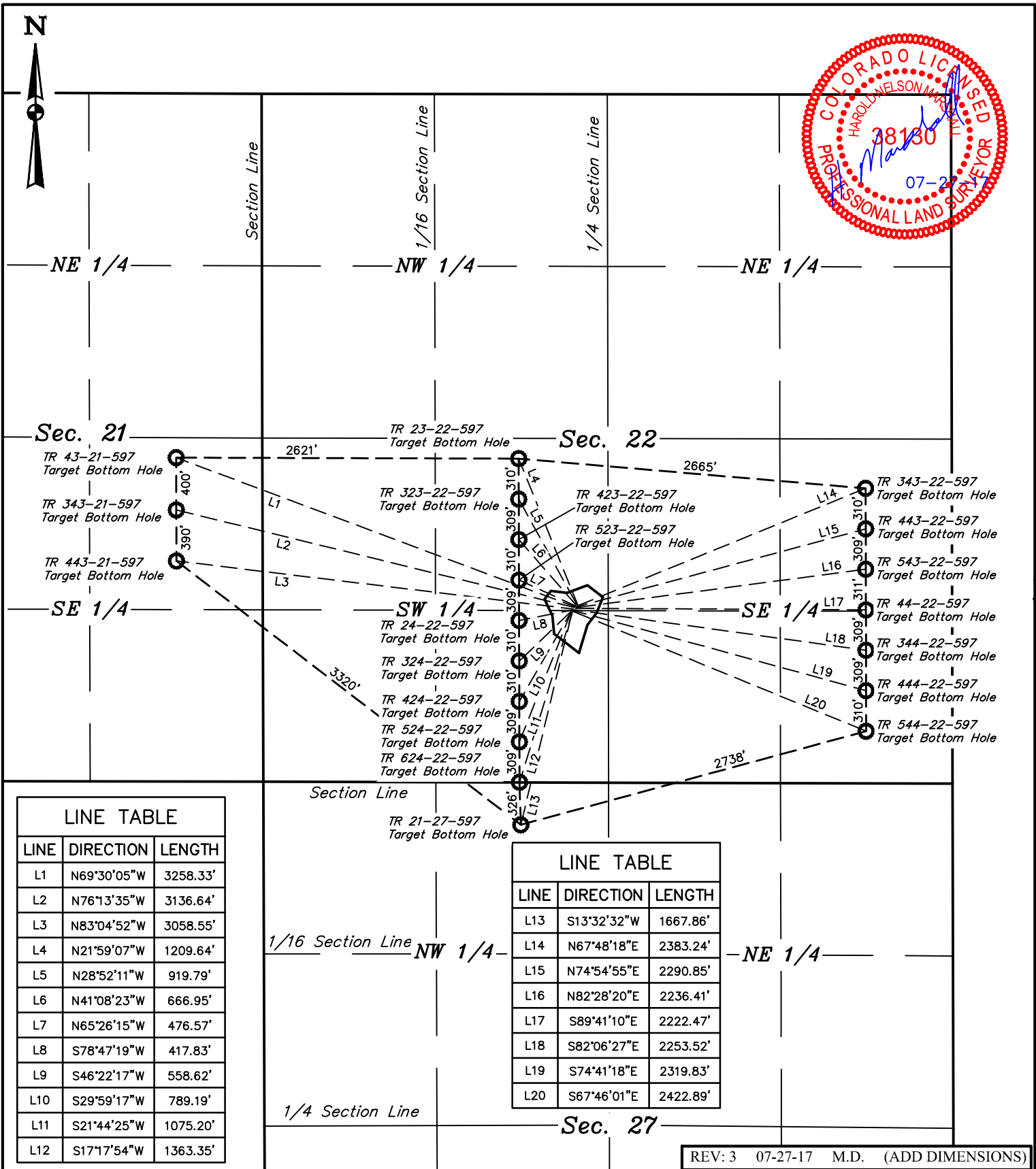
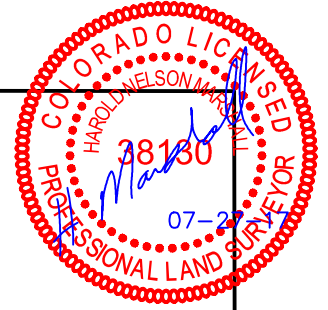


N



LINE TABLE		
LINE	DIRECTION	LENGTH
L1	N69°30'05"W	3258.33'
L2	N76°13'35"W	3136.64'
L3	N83°04'52"W	3058.55'
L4	N21°59'07"W	1209.64'
L5	N28°52'11"W	919.79'
L6	N41°08'23"W	666.95'
L7	N65°26'15"W	476.57'
L8	S78°47'19"W	417.83'
L9	S46°22'17"W	558.62'
L10	S29°59'17"W	789.19'
L11	S21°44'25"W	1075.20'
L12	S17°17'54"W	1363.35'

LINE TABLE		
LINE	DIRECTION	LENGTH
L13	S13°32'32"W	1667.86'
L14	N67°48'18"E	2383.24'
L15	N74°54'55"E	2290.85'
L16	N82°28'20"E	2236.41'
L17	S89°41'10"E	2222.47'
L18	S82°06'27"E	2253.52'
L19	S74°41'18"E	2319.83'
L20	S67°46'01"E	2422.89'

REV: 3 07-27-17 M.D. (ADD DIMENSIONS)

NOTES:
○ = TARGET BOTTOM HOLE.

TEP Rocky Mountain LLC

TR 23-22-597
NE 1/4 SW 1/4, SECTION 22, T5S, R97W, 6th P.M.
GARFIELD COUNTY, COLORADO



UELS, LLC
Corporate Office * 85 South 200 East
Vernal, UT 84078 * (435) 789-1017

SURVEYED BY	GLEN MCELROY, B.K.	05-30-17	SCALE
DRAWN BY	M.D.	06-26-17	1" = 1000'
MULTI-WELL PLAN		PLAT #6A	