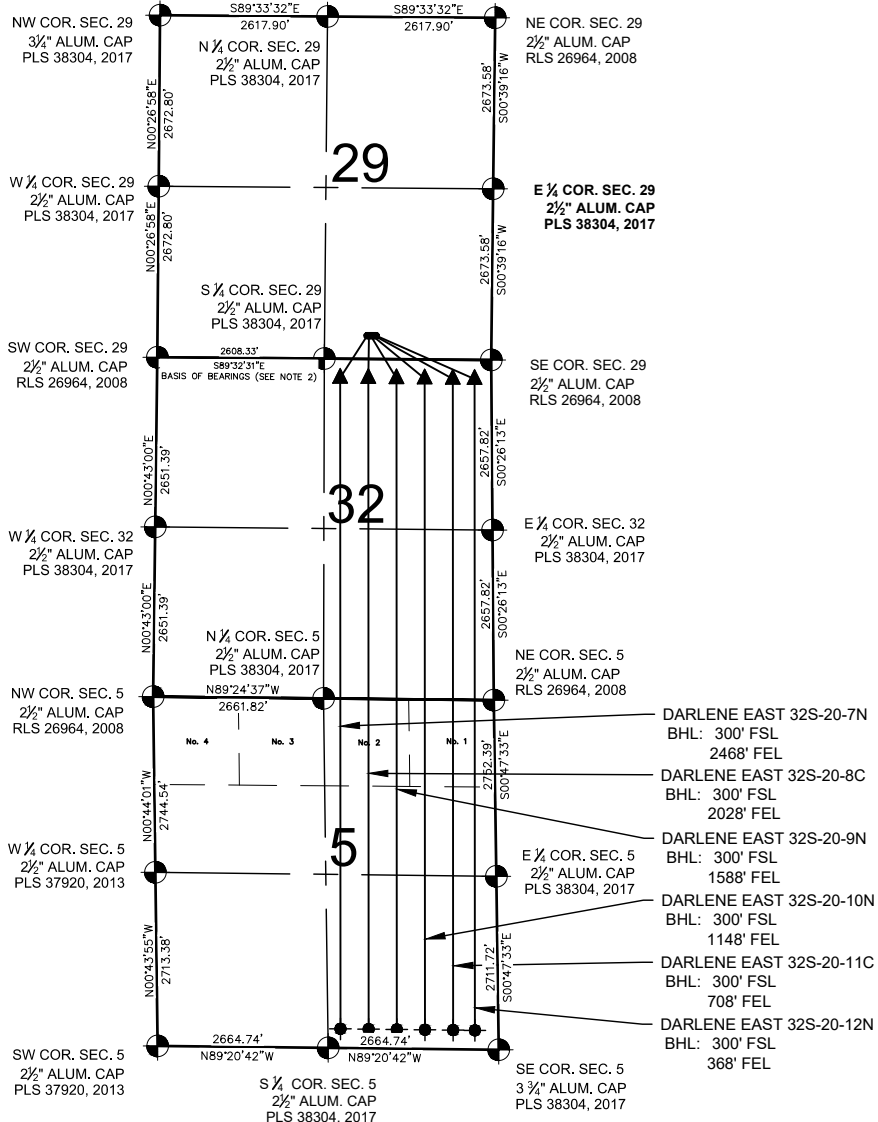


DARLENE EAST 29-N PAD MULTI-WELL PLAN



NOTES:

- DARLENE EAST 32S-20-7N
BHL: 300' FSL & 2468' FEL
 - DARLENE EAST 32S-20-8C
BHL: 300' FSL & 2028' FEL
 - DARLENE EAST 32S-20-9N
BHL: 300' FSL & 1588' FEL
 - DARLENE EAST 32S-20-10N
BHL: 300' FSL & 1148' FEL
 - DARLENE EAST 32S-20-11C
BHL: 300' FSL & 708' FEL
 - DARLENE EAST 32S-20-12N
BHL: 300' FSL & 368' FEL
- DARLENE EAST 32S-20-7N TO BE AT 363' FSL & 1942' FEL.
 BOTTOM HOLE AT 300' FSL & 2468' FEL, SEC. 5, T11N, R61W.
 DARLENE EAST 32S-20-8C TO BE AT 364' FSL & 1914' FEL.
 BOTTOM HOLE AT 300' FSL & 2028' FEL, SEC. 5, T11N, R61W.
 DARLENE EAST 32S-20-9N TO BE AT 364' FSL & 1886' FEL.
 BOTTOM HOLE AT 300' FSL & 1588' FEL, SEC. 5, T11N, R61W.
 DARLENE EAST 32S-20-10N TO BE AT 364' FSL & 1858' FEL.
 BOTTOM HOLE AT 300' FSL & 1148' FEL, SEC. 5, T11N, R61W.
 DARLENE EAST 32S-20-11C TO BE AT 364' FSL & 1830' FEL.
 BOTTOM HOLE AT 300' FSL & 708' FEL, SEC. 5, T11N, R61W.
 DARLENE EAST 32S-20-12N TO BE AT 365' FSL & 1802' FEL.
 BOTTOM HOLE AT 300' FSL & 368' FEL, SEC. 5, T11N, R61W.

LEGEND

- = EXISTING MONUMENT
- = CALCULATED POSITION
- = PROPOSED WELL
- ◆ = EXISTING WELL
- ▲ = LANDING POINT
- BHL = BOTTOM HOLE LOCATION

NOTES:

1. THIS FIELD SURVEY CONFORMS TO THE MINIMUM STANDARDS SET BY THE C.O.G.C.C., RULE NO. 215
2. BEARINGS ARE BASED ON THE ASSUMPTION THAT THE SOUTH LINE OF THE SOUTHWEST 1/4 OF SECTION 29, BEARS N89°32'31"W BETWEEN THE MONUMENTS SHOWN HEREON.
3. ALL DISTANCES AND BEARINGS SHOWN HEREON ARE GROUND VALUES AS GPS MEASURED IN THE FIELD, WITH TIES TO WELLS MEASURED PERPENDICULAR TO SECTION LINES. THIS LOW DISTORTION PROJECTION (LDP) IS BASED ON THE NORTH AMERICAN DATUM OF 1983, U.S. SURVEY FOOT WITH A LATITUDE ORIGIN OF 41.001670°N, A CENTRAL MERIDIAN LONGITUDE OF 104.201007°W, AND A SCALE FACTOR ON THE CENTRAL MERIDIAN OF 1.000248 (EXACT). THE LDP BASIS OF BEARINGS IS GEODETIC NORTH.
4. FIELD VERIFICATION OF MONUMENTS COMPLETED WITHIN 1 YEAR OF SIGNATURE DATE.

7535 Hilltop Circle
Denver, CO 80221
(303) 928-7128
www.ascentgeomatics.com

FIELD DATE:
06-01-17

DRAWING DATE:
07-20-17

BY:
MJW

CHECKED:
IJM

SITE NAME:
DARLENE EAST 29-N PAD

SURFACE LOCATION:
**SW 1/4 SE 1/4 SEC. 29, T12N, R61W, 6TH P.M.
WELD COUNTY, COLORADO**

PREPARED FOR: