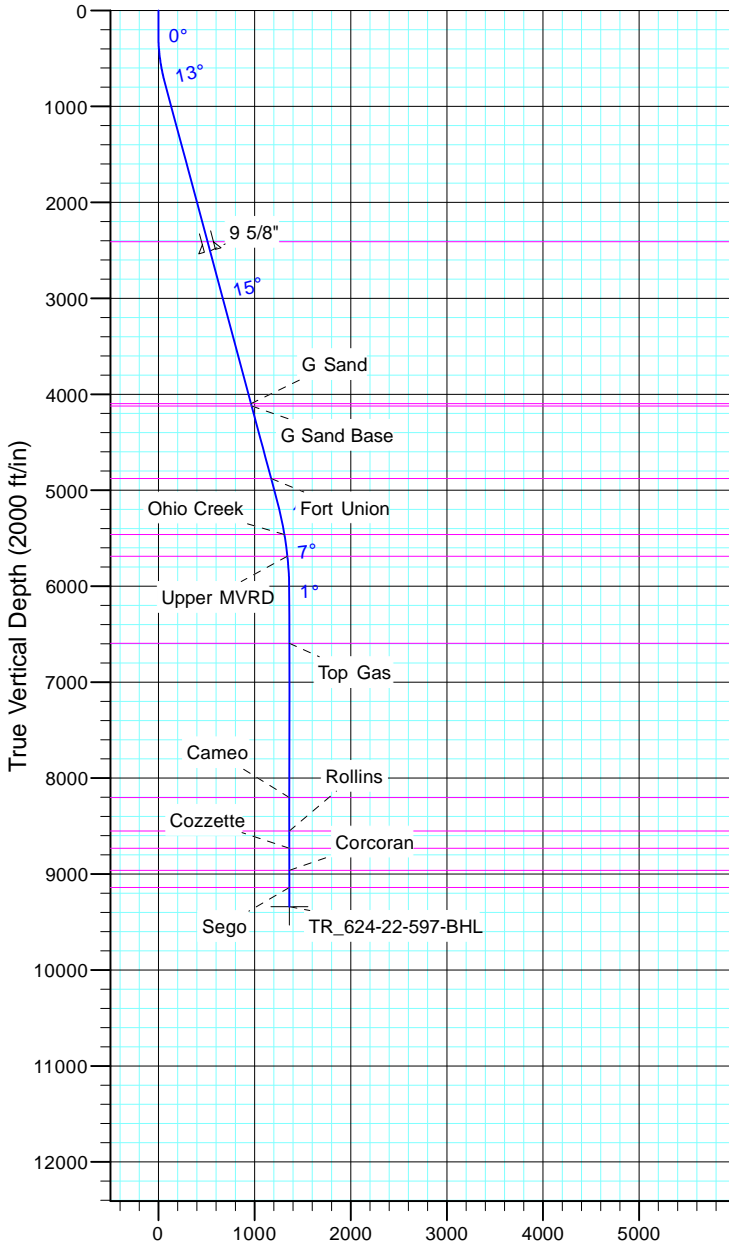


TEP Rocky Mountain LLC
Project: Garfield County, CO NAD83
Site: TR 23-22-597
Well: TR 624-22-597
Wellbore: OH
Design: Plan #1



Azimuths to True North
Magnetic North: 11.59°

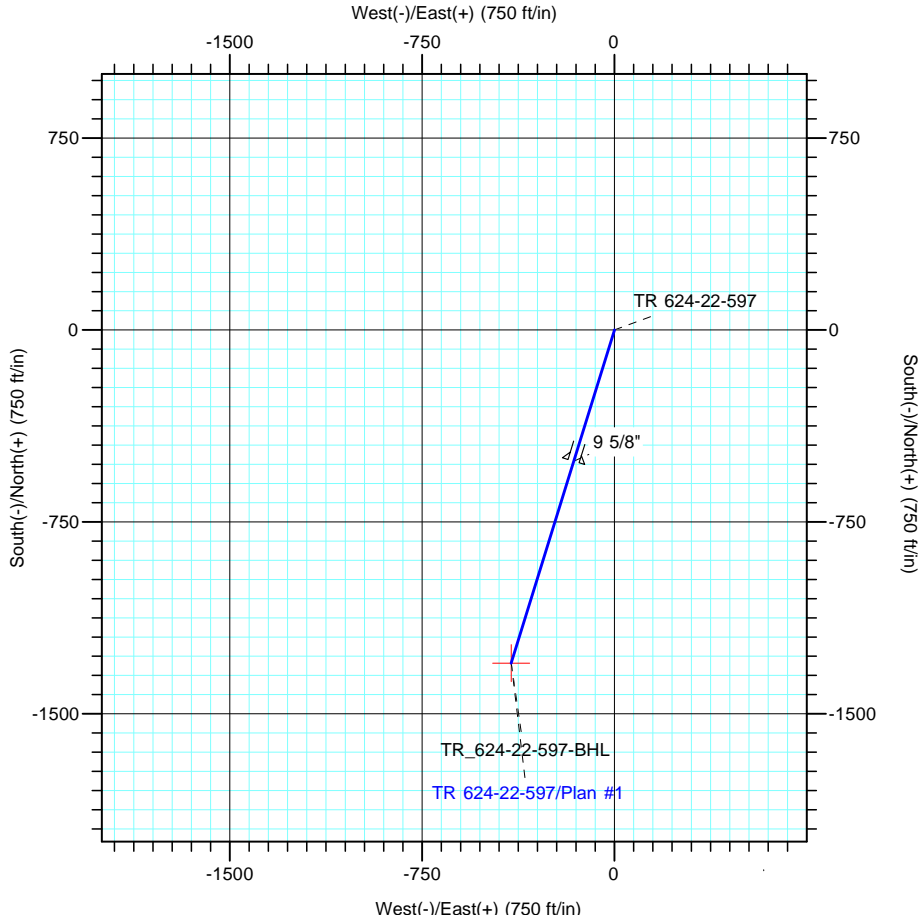
Magnetic Field
Strength: 53045.9snT
Dip Angle: 66.02°
Date: 12/31/2004
Model: IGRF2000



Vertical Section at 197.20° (2000 ft/in)

CASING DETAILS			
TVD	MD	Name	Size
2506.2	2574.0	9 5/8"	9.625

FORMATION TOP DETAILS		
TVDPATH	MDPATH	FORMATION
2410.0	2474.4	Wasatch
4099.0	4223.0	G Sand
4122.0	4246.8	G Sand Base
4878.0	5029.5	Fort Union
5463.0	5630.9	Ohio Creek
5688.0	5858.0	Upper MVRD
6596.0	6766.8	Top Gas
8203.0	8373.8	Cameo
8552.0	8722.8	Rollins
8733.0	8903.8	Cozzette
8962.0	9132.8	Corcoran
9141.0	9311.8	Sego



DESIGN TARGET DETAILS						
Name	TVD	+N/-S	+E/-W	Northing	Easting	Latitude
TR_624-22-597-BHL	9341.0	-1301.9	-403.0	1652352.70	2220412.69	39° 35' 30.832 N

SECTION DETAILS										
Sec	MD	Inc	Azi	TVD	+N/-S	+E/-W	Dleg	TFace	Vsect	Target
1	0.0	0.00	0.00	0.0	0.0	0.0	0.00	0.00	0.0	
2	250.0	0.00	0.00	250.0	0.0	0.0	0.00	0.00	0.0	
3	750.0	15.00	197.20	744.3	-62.2	-19.2	3.00	197.20	65.1	
4	5261.9	15.00	197.20	5102.5	-1177.6	-364.5	0.00	0.00	1232.7	
5	6261.8	0.00	0.00	6091.0	-1301.9	-403.0	1.50	180.00	1362.9	
6	9511.8	0.00	0.00	9341.0	-1301.9	-403.0	0.00	0.00	1362.9	TR_624-22-597-BHL