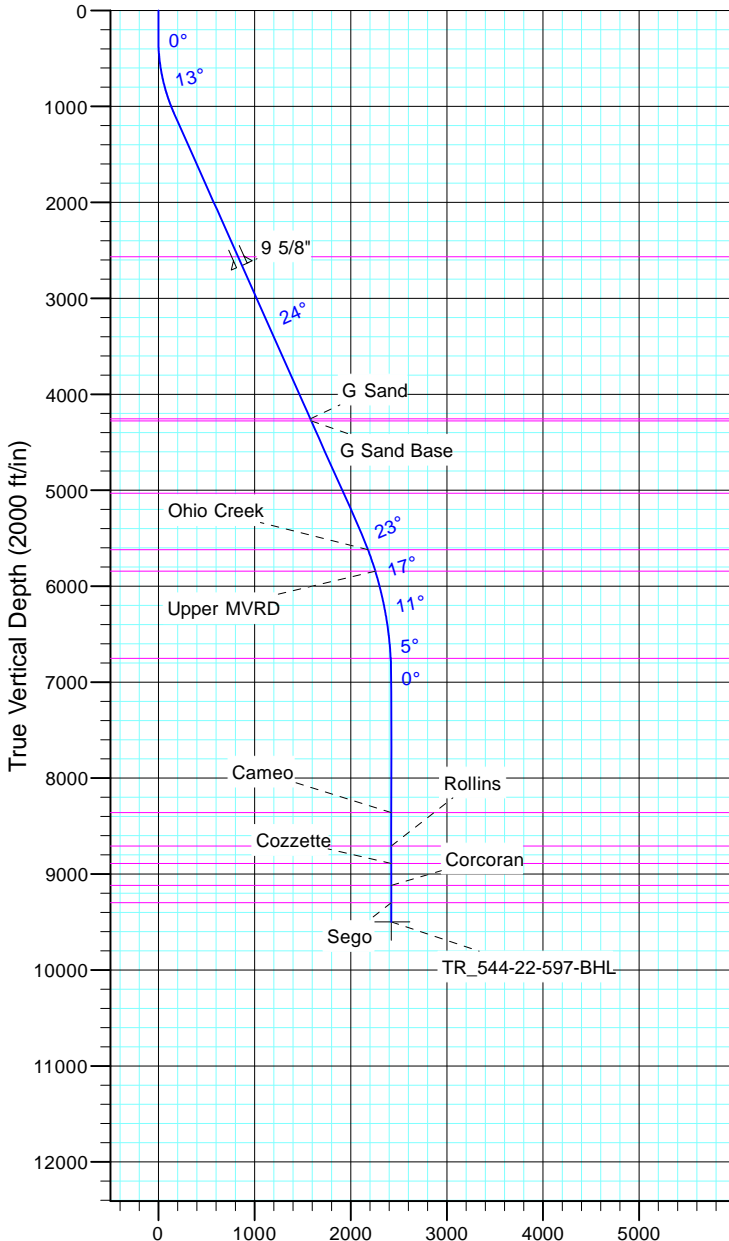


TEP Rocky Mountain LLC  
Project: Garfield County, CO NAD83  
Site: TR 23-22-597  
Well: TR 544-22-597  
Wellbore: OH  
Design: Plan #1



Azimuths to True North  
Magnetic North: 11.59°  
  
Magnetic Field  
Strength: 53045.9snT  
Dip Angle: 66.02°  
Date: 12/31/2004  
Model: IGRF2000



Vertical Section at 112.13° (2000 ft/in)

CASING DETAILS

TVD	MD	Name	Size
2658.2	2831.0	9 5/8"	9.625

FORMATION TOP DETAILS

TVDPath	MDPath	Formation
2567.0	2731.2	Wasatch
4256.0	4580.1	G Sand
4279.0	4605.2	G Sand Base
5032.0	5429.5	Fort Union
5620.0	6070.1	Ohio Creek
5845.0	6307.8	Upper MVRD
6753.0	7232.0	Top Gas
8360.0	8839.1	Cameo
8709.0	9188.1	Rollins
8890.0	9369.1	Cozzette
9119.0	9598.1	Corcoran
9298.0	9777.1	Sego

DESIGN TARGET DETAILS

Name	TVD	+N/-S	+E/-W	Northing	Easting	Latitude	Longitude
TR_544-22-597-BHL	9498.0	-912.6	2243.7	1652667.20	2223074.70	39° 35' 34.739 N	108° 15' 26.406 W

SECTION DETAILS

Sec	MD	Inc	Azi	TVD	+N/-S	+E/-W	Dleg	TFace	VSect	Target
1	0.0	0.00	0.00	0.0	0.0	0.0	0.00	0.00	0.0	
2	300.0	0.00	0.00	300.0	0.0	0.0	0.00	0.00	0.0	
3	1100.0	24.00	112.13	1076.8	-62.2	153.0	3.00	112.13	165.1	
4	5837.1	24.00	112.13	5404.3	-788.2	1937.8	0.00	0.00	2091.9	
5	7437.1	0.00	0.00	6958.0	-912.6	2243.7	1.50	180.00	2422.2	
6	9977.1	0.00	0.00	9498.0	-912.6	2243.7	0.00	0.00	2422.2	TR_544-22-597-BHL

