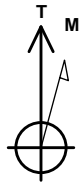


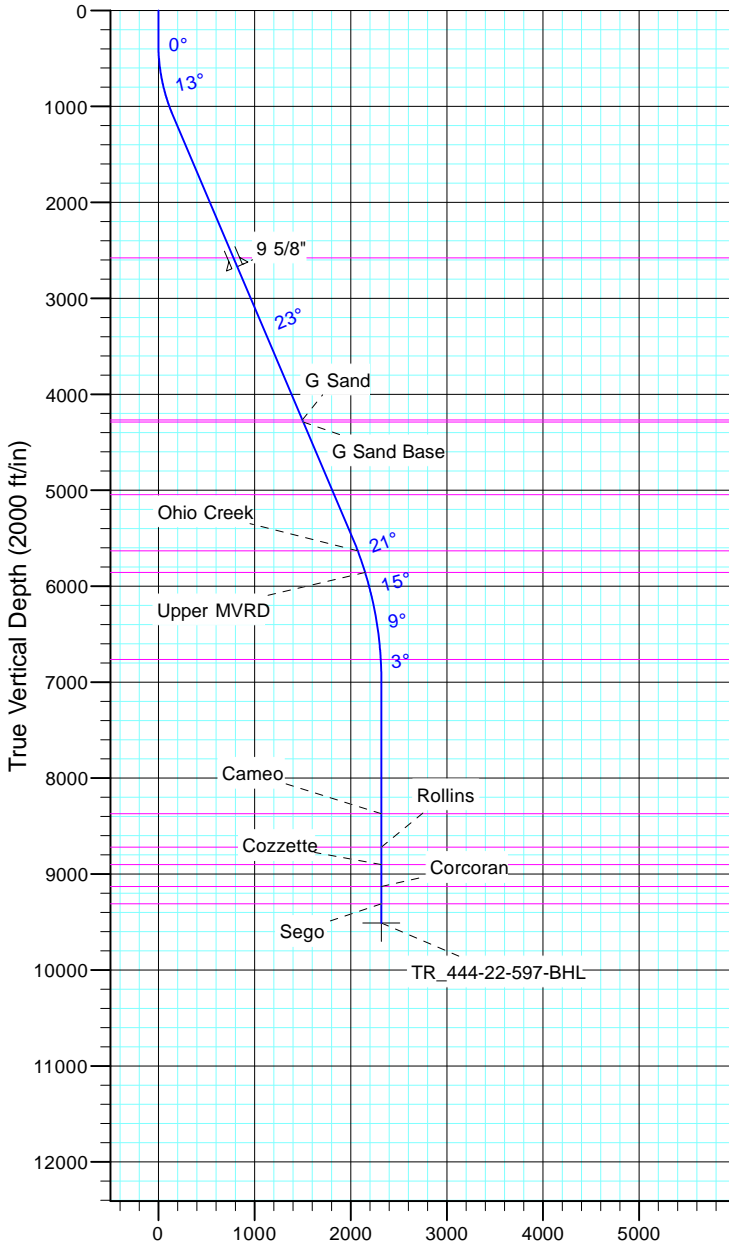
TEP Rocky Mountain LLC

Project: Garfield County, CO NAD83
 Site: TR 23-22-597
 Well: TR 444-22-597
 Wellbore: OH
 Design: Plan #1



Azimuths to True North
 Magnetic North: 11.59°

Magnetic Field
 Strength: 53045.9snT
 Dip Angle: 66.02°
 Date: 12/31/2004
 Model: IGRF2000



Vertical Section at 105.21° (2000 ft/in)

CASING DETAILS			
TVD	MD	Name	Size
2670.7	2827.0	9 5/8"	9.625

FORMATION TOP DETAILS		
TVDPath	MDPath	Formation
2579.0	2727.4	Wasatch
4268.0	4562.2	G Sand
4291.0	4587.2	G Sand Base
5047.0	5408.5	Fort Union
5632.0	6042.7	Ohio Creek
5857.0	6280.5	Upper MVRD
6765.0	7205.3	Top Gas
8372.0	8812.4	Cameo
8721.0	9161.4	Rollins
8902.0	9342.4	Cozzette
9131.0	9571.4	Corcoran
9310.0	9750.4	Sego

DESIGN TARGET DETAILS							
Name	TVD	+N/-S	+E/-W	Northing	Easting	Latitude	Longitude
TR_444-22-597-BHL	9510.0	-608.5	2237.9	1652977.10	2223082.89	39° 35' 37.803 N	108° 15' 26.422 W

SECTION DETAILS											
Sec	MD	Inc	Azi	TVD	+N/-S	+E/-W	Dleg	TFace	VSect	Target	
1	0.0	0.00	0.00	0.0	0.0	0.0	0.00	0.00	0.0		
2	350.0	0.00	0.00	350.0	0.0	0.0	0.00	0.00	0.0		
3	1116.5	23.00	105.21	1096.1	-39.8	146.5	3.00	105.21	151.8		
4	5887.3	23.00	105.21	5487.7	-528.9	1944.9	0.00	2015.6			
5	7420.4	0.00	0.00	6980.0	-608.5	2237.9	1.50	180.00	2319.1		
6	9950.4	0.00	0.00	9510.0	-608.5	2237.9	0.00	0.00	2319.1	TR_444-22-597-BHL	

