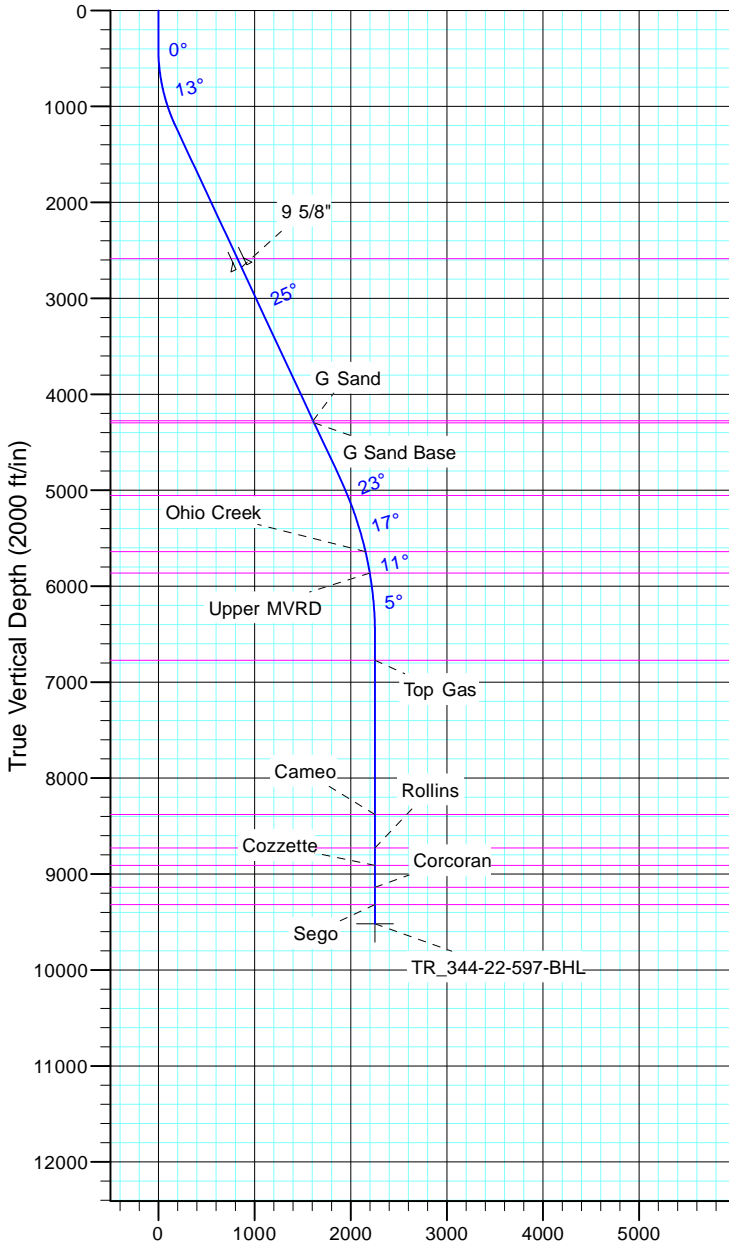


TEP Rocky Mountain LLC  
Project: Garfield County, CO NAD83  
Site: TR 23-22-597  
Well: TR 344-22-597  
Wellbore: OH  
Design: Plan #1



Azimuths to True North  
Magnetic North: 11.59°  
  
Magnetic Field  
Strength: 53045.9snT  
Dip Angle: 66.02°  
Date: 12/31/2004  
Model: IGRF2000



Vertical Section at 97.79° (2000 ft/in)

CASING DETAILS

TVD	MD	Name	Size
2676.9	2855.0	9 5/8"	9.625

FORMATION TOP DETAILS

TVDPath	MDPath	Formation
2587.0	2755.8	Wasatch
4276.0	4619.4	G Sand
4299.0	4644.7	G Sand Base
5055.0	5476.9	Fort Union
5640.0	6091.5	Ohio Creek
5865.0	6321.0	Upper MVRD
6773.0	7232.0	Top Gas
8380.0	8839.0	Cameo
8729.0	9188.0	Rollins
8910.0	9369.0	Cozzette
9139.0	9598.0	Corcoran
9318.0	9777.0	Sego

DESIGN TARGET DETAILS

Name	TVD	+N/-S	+E/-W	Northing	Easting	Latitude	Longitude
TR_344-22-597-BHL	9518.0	-305.5	2232.0	1653286.00	2223091.09	39° 35' 40.857 N	108° 15' 26.437 W

SECTION DETAILS

Sec	MD	Inc	Azi	TVD	+N/-S	+E/-W	Dleg	TFace	VSect	Target
1	0.0	0.00	0.00	0.0	0.0	0.0	0.00	0.00	0.0	
2	400.0	0.00	0.00	400.0	0.0	0.0	0.00	0.00	0.0	
3	1233.2	25.00	97.79	1207.0	-24.3	177.2	3.00	97.79	178.9	
4	5294.5	25.00	97.79	4887.9	-256.9	1877.6	0.00	0.00	1895.1	
5	6961.0	0.00	0.00	6502.0	-305.5	2232.0	1.50	180.00	2252.8	
6	9977.0	0.00	0.00	9518.0	-305.5	2232.0	0.00	0.00	2252.8	TR_344-22-597-BHL

