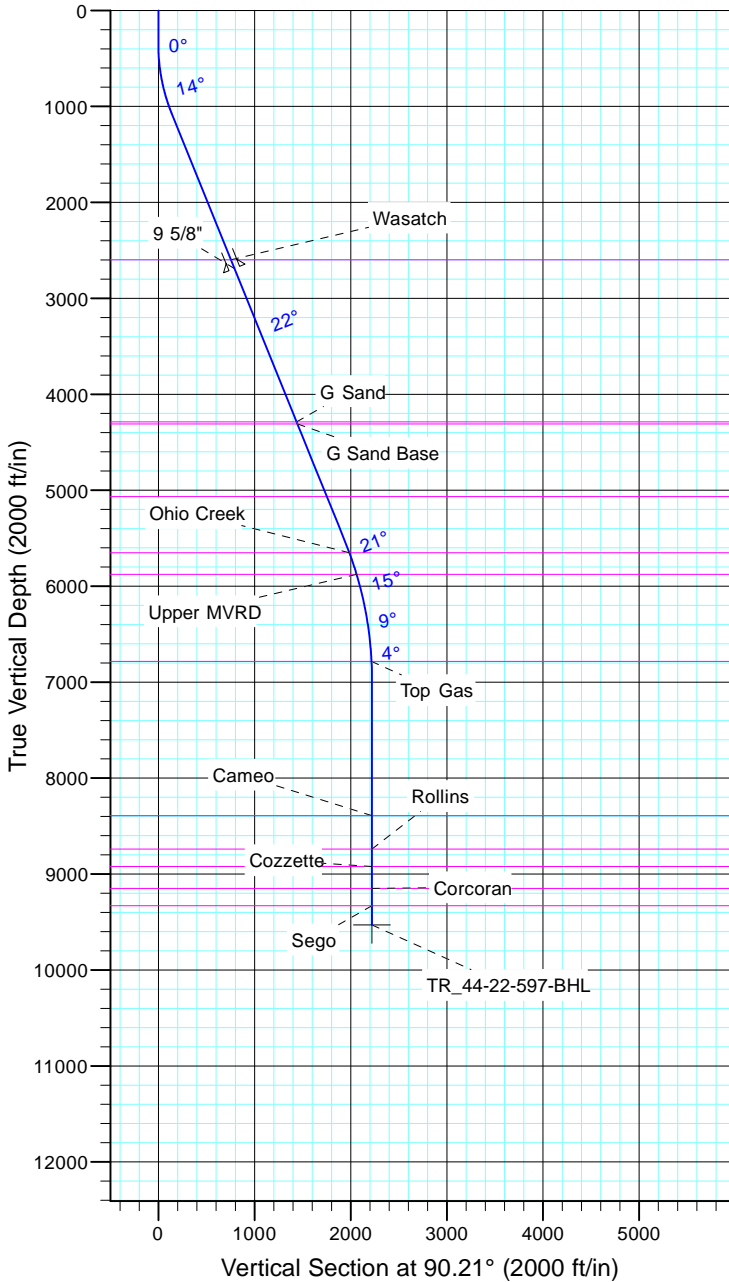


TEP Rocky Mountain LLC  
Project: Garfield County, CO NAD83  
Site: TR 23-22-597  
Well: TR 44-22-597  
Wellbore: OH  
Design: Plan #1

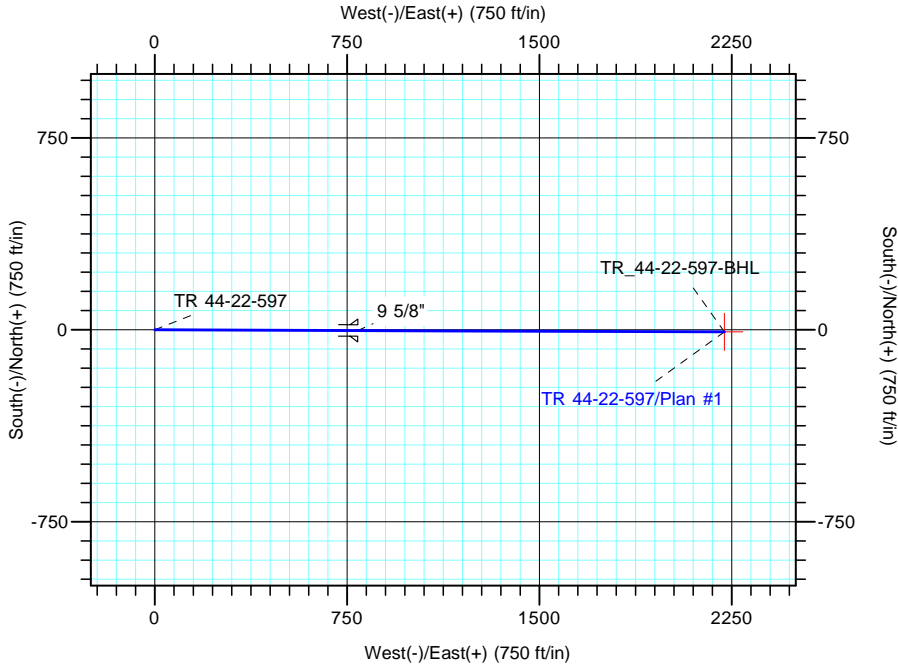


Azimuths to True North  
Magnetic North: 11.59°  
  
Magnetic Field  
Strength: 53045.9snT  
Dip Angle: 66.02°  
Date: 12/31/2004  
Model: IGRF2000



CASING DETAILS			
TVD	MD	Name	Size
2691.2	2836.0	9 5/8"	9.625

FORMATION TOP DETAILS		
TVDPath	MDPath	Formation
2599.0	2736.6	Wasatch
4288.0	4558.3	G Sand
4311.0	4583.1	G Sand Base
5067.0	5398.5	Fort Union
5652.0	6028.7	Ohio Creek
5877.0	6265.9	Upper MVRD
6785.0	7189.4	Top Gas
8392.0	8796.5	Cameo
8741.0	9145.5	Rollins
8922.0	9326.5	Cozzette
9151.0	9555.5	Corcoran
9330.0	9734.5	Sego



DESIGN TARGET DETAILS						
Name	TVD	+N/-S	+E/-W	Northing	Easting	Latitude
TR_44-22-597-BHL	9530.0	-8.3	2221.8	1653594.90	2223099.31	39° 35' 43.911 N

SECTION DETAILS										
Sec	MD	Inc	Azi	TVD	+N/-S	+E/-W	Dleg	TFace	VSect	Target
1	0.0	0.00	0.00	0.0	0.0	0.0	0.00	0.00	0.0	
2	360.0	0.00	0.00	360.0	0.0	0.0	0.00	0.00	0.0	
3	1093.5	22.00	90.21	1075.6	-0.5	139.1	3.00	90.21	139.1	
4	5909.6	22.00	90.21	5540.9	-7.3	1943.6	0.00	0.00	1943.6	
5	7376.5	0.00	0.00	6972.0	-8.3	2221.8	1.50	180.00	2221.8	
6	9934.5	0.00	0.00	9530.0	-8.3	2221.8	0.00	0.00	2221.8	TR_44-22-597-BHL