

LEGEND:

└─ = 90° SYMBOL

● = PROPOSED WELLHEAD.

○ = TARGET BOTTOM HOLE.

▲ = SECTION CORNERS LOCATED. (NAD 83)

T5S, R97W, 6th P.M.

1923 Brass Cap,
1.1' High, T-Post
Lat: 39.606361°
Long: 108.273764°

1923 Brass Cap,
1.2' High
Lat: 39.606364°
Long: 108.264375°

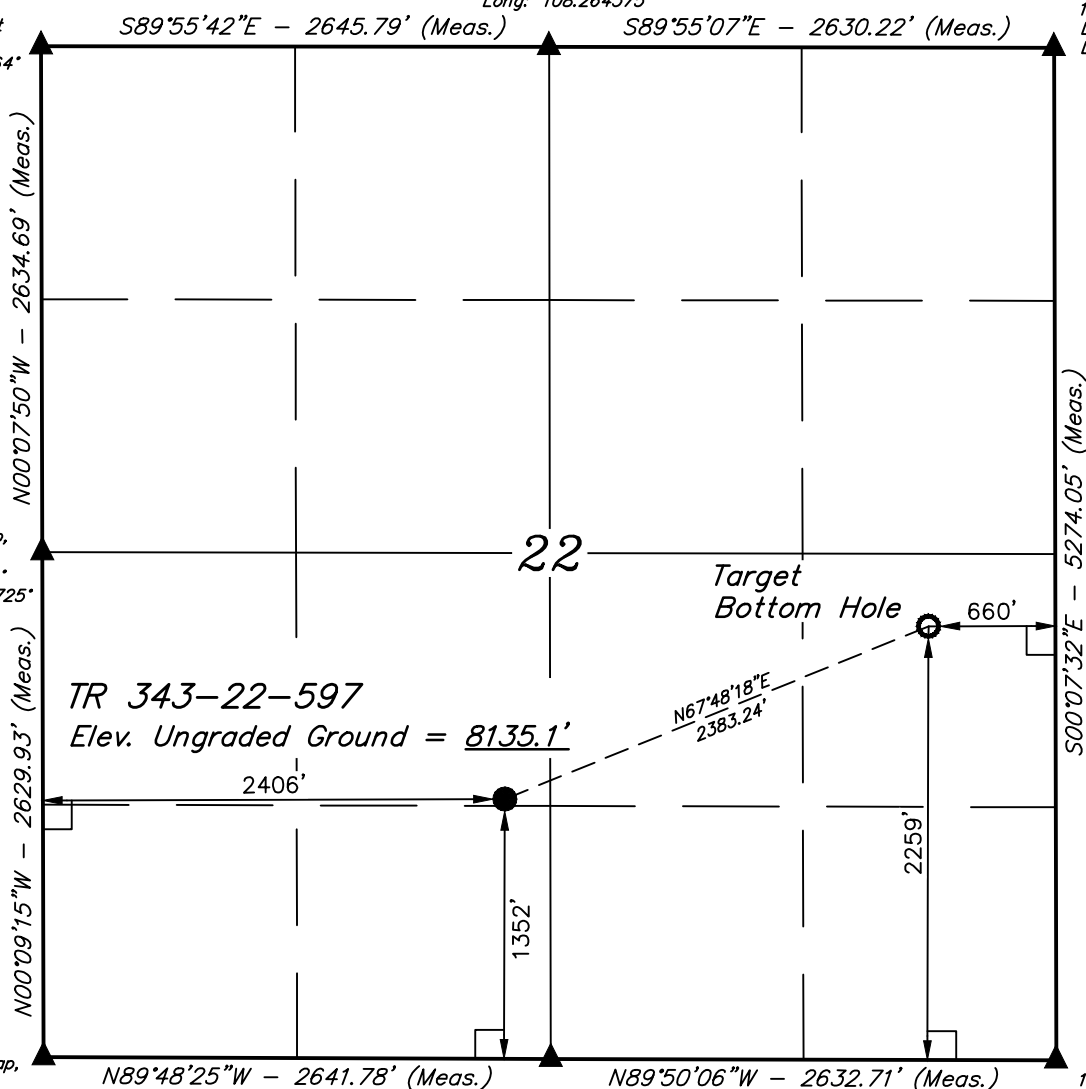
1923 Brass Cap,
1.4' High, T-Post
Lat: 39.606367°
Long: 108.255044°

1923 Brass Cap,
1.3' High
Lat: 39.599131°
Long: 108.273725°

1923 Brass Cap,
1.3' High
Lat: 39.591911°
Long: 108.273683°

1923 Brass Cap,
1.0' High
Lat: 39.591900°
Long: 108.264311°

1923 Brass Cap,
1.5' High, T-Post
Lat: 39.591892°
Long: 108.254972°



TR 343-22-597

Elev. Ungraded Ground = 8135.1'

Target
Bottom Hole

N67°48'18"E
2383.24'

2406'

1352'

2259'

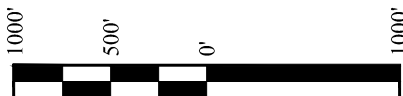
CERTIFICATE

THIS IS TO CERTIFY THAT THE ABOVE PLAT WAS PREPARED AND THE LOCATION AS SHOWN WAS STAKED ON THE GROUND FROM FIELD NOTES OF ACTUAL SURVEYS MADE BY ME OR UNDER MY SUPERVISION AND THAT THE SAME ARE TRUE AND CORRECT TO THE BEST OF MY KNOWLEDGE AND BELIEF.

REGISTERED LAND SURVEYOR
REGISTRATION NO. 180
STATE OF COLORADO 07-25-17

PLAT #1

PDOP = 1.4



NAD 83 (SURFACE LOCATION)	NAD 83 (TARGET BOTTOM HOLE)
LATITUDE = 39°35'44.20" (39.595611)	LATITUDE = 39°35'53.14" (39.598094)
LONGITUDE = 108°15'54.60" (108.265167)	LONGITUDE = 108°15'26.44" (108.257344)
STATE PLANE NAD 83 (CO. CEN.)	STATE PLANE NAD 83 (CO. CEN.)
N: 1653688.24 E: 2220893.12	N: 1654524.60 E: 2223124.01

BASIS OF BEARINGS

BASIS OF BEARINGS IS A G.P.S. OBSERVATION

BASIS OF ELEVATION

SPOT ELEVATION AT THE NORTHWEST CORNER OF SECTION 30, T5S, R97W, 6th P.M., TAKEN FROM THE FORKED GULCH, QUADRANGLE, COLORADO, GARFIELD COUNTY, 7.5 MINUTE QUAD. (TOPOGRAPHIC MAP) PUBLISHED BY THE UNITED STATES DEPARTMENT OF THE INTERIOR, GEOLOGICAL SURVEY. SAID ELEVATION IS MARKED AS BEING 5966 FEET.

UELS, LLC

Corporate Office * 85 South 200 East
Vernal, UT 84078 * (435) 789-1017



TEP Rocky Mountain LLC

TR 343-22-597

NE 1/4 SW 1/4, SECTION 22, T5S, R97W, 6th P.M.
GARFIELD COUNTY, COLORADO

SURVEYED BY	MARTIN PIERCE, B.K.	07-10-17	SCALE
DRAWN BY	M.D.	07-20-17	1" = 1000'

WELL LOCATION PLAT

