



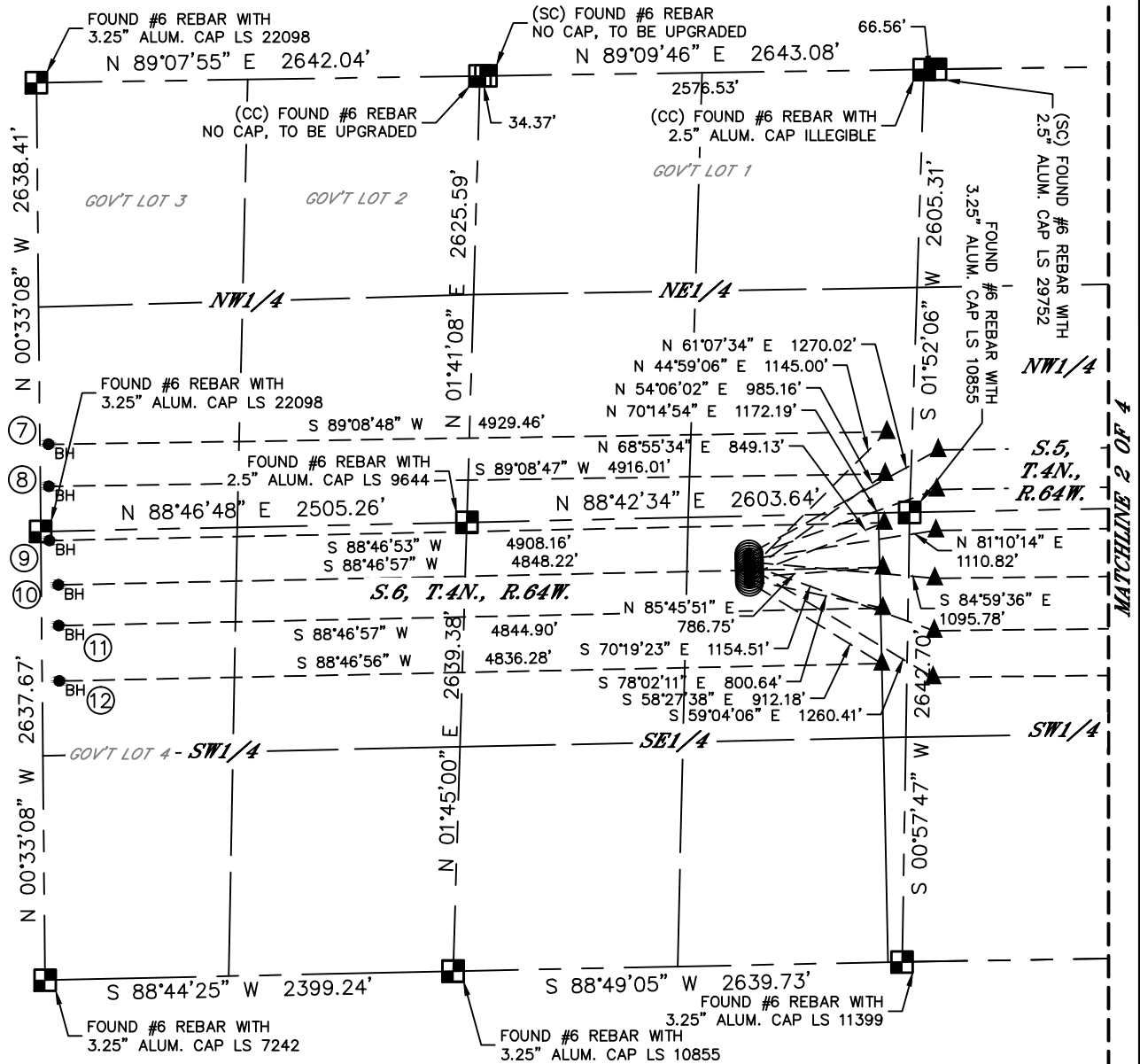
Lat40°, Inc. 6250 W. 10th Street, Unit 2, Greeley, CO 970-515-5294

MULTI-WELL PLAN

JUDY 4N64W6W PAD

SECTION: 6
TOWNSHIP: 4N
RANGE: 64W
6TH. P.M.
WELD COUNTY, CO

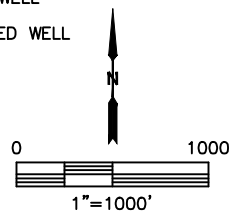
THIS MAP DOES NOT REPRESENT A BOUNDARY SURVEY



#	WELL NAME	BHL FOOTAGE	BHL LAT°	BHL LONG°	BHL S-T-R
1	JUDY 6S-212	2238 FNL 100 FEL	40.34241	-104.54619	4-4N-64W
3	JUDY 6S-202	2533 FSL 100 FEL	40.34104	-104.54622	4-4N-64W
4	JUDY 6S-332	2252 FSL 100 FEL	40.34027	-104.54624	4-4N-64W
5	JUDY 6D-212	1944 FSL 100 FEL	40.33942	-104.54626	4-4N-64W
6	JUDY 6D-312	1670 FSL 100 FEL	40.33867	-104.54628	4-4N-64W
7	JUDY 6S-214	2127 FNL 50 FWL	40.34258	-104.60186	6-4N-64W
8	JUDY 6S-314	2374 FNL 50 FWL	40.34190	-104.60186	6-4N-64W
9	JUDY 6S-204	2583 FSL 50 FWL	40.34102	-104.60186	6-4N-64W
10	JUDY 6S-334	2321 FSL 100 FWL	40.34031	-104.60168	6-4N-64W
11	JUDY 6S-234	2082 FSL 100 FWL	40.33965	-104.60168	6-4N-64W
12	JUDY 6X-314	1756 FSL 100 FWL	40.33876	-104.60168	6-4N-64W

LEGEND

- = ALIQUOT MONUMENT AS DESCRIBED
- = CALCULATED POSITION
- = SURFACE HOLE LOCATION (SHL)
- ▲ = ENTRY POINT LOCATION (EP)
- = BOTTOM HOLE LOCATION (BHL)
- ⊙ = EXISTING WELL
- ⊙ = ABANDONED WELL



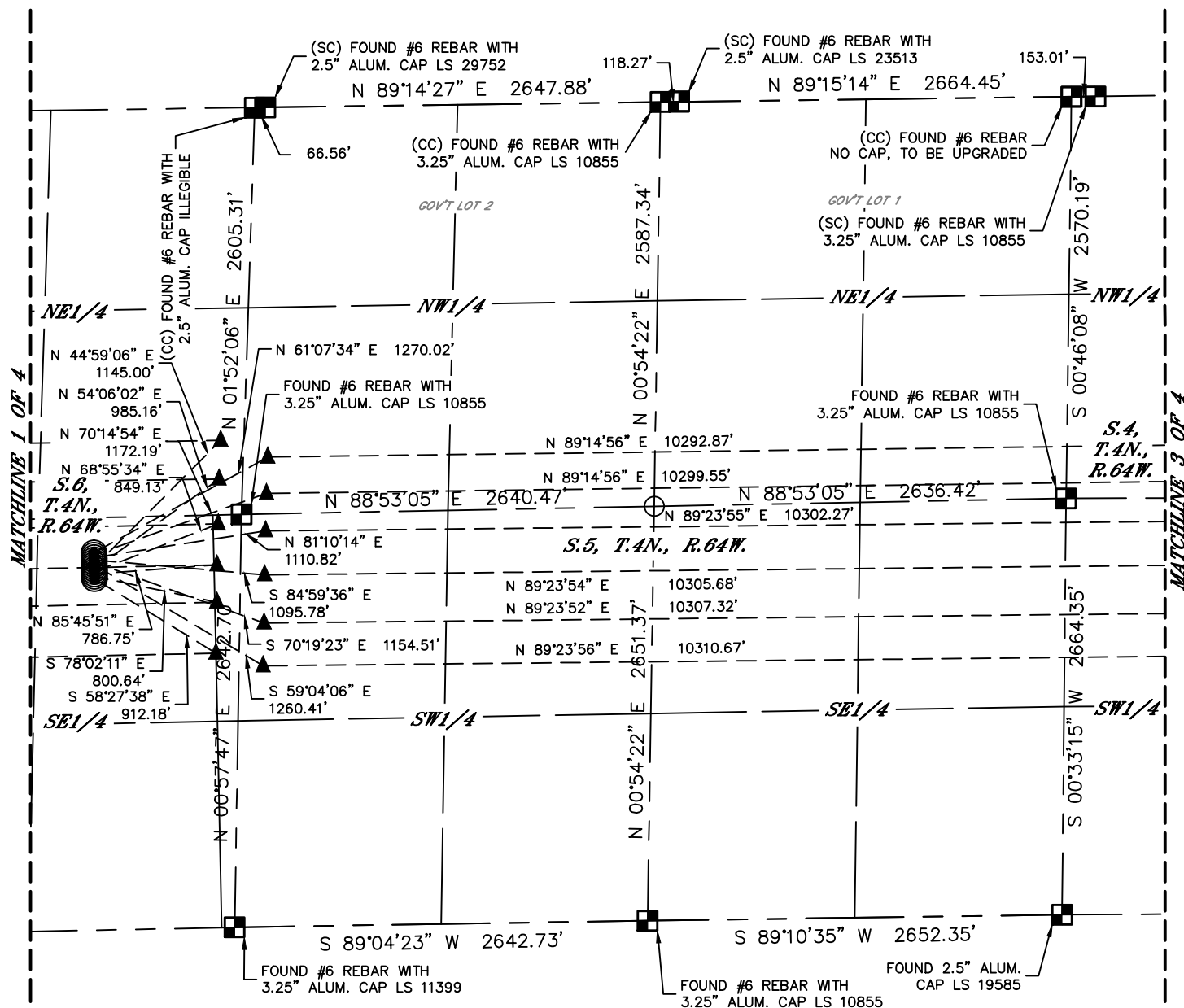


Lat40°, Inc. 6250 W. 10th Street, Unit 2, Greeley, CO 970-515-5294

MULTI-WELL PLAN

JUDY 4N64W6W PAD

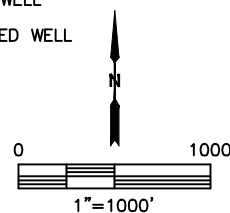
SECTION: 6
TOWNSHIP: 4N
RANGE: 64W
6TH. P.M.
WELD COUNTY, CO



#	WELL NAME	BHL FOOTAGE	BHL LAT°	BHL LONG°	BHL S-T-R
1	JUDY 6S-212	2238 FNL 100 FEL	40.34241	-104.54619	4-4N-64W
3	JUDY 6S-202	2533 FSL 100 FEL	40.34104	-104.54622	4-4N-64W
4	JUDY 6S-332	2252 FSL 100 FEL	40.34027	-104.54624	4-4N-64W
5	JUDY 6D-212	1944 FSL 100 FEL	40.33942	-104.54626	4-4N-64W
6	JUDY 6D-312	1670 FSL 100 FEL	40.33867	-104.54628	4-4N-64W
7	JUDY 6S-214	2127 FNL 50 FWL	40.34258	-104.60186	6-4N-64W
8	JUDY 6S-314	2374 FNL 50 FWL	40.34190	-104.60186	6-4N-64W
9	JUDY 6S-204	2583 FSL 50 FWL	40.34102	-104.60186	6-4N-64W
10	JUDY 6S-334	2321 FSL 100 FWL	40.34031	-104.60168	6-4N-64W
11	JUDY 6S-234	2082 FSL 100 FWL	40.33965	-104.60168	6-4N-64W
12	JUDY 6X-314	1756 FSL 100 FWL	40.33876	-104.60168	6-4N-64W

LEGEND

- = ALIQUOT MONUMENT AS DESCRIBED
- = CALCULATED POSITION
- = SURFACE HOLE LOCATION (SHL)
- ▲ = ENTRY POINT LOCATION (EP)
- _{BH} = BOTTOM HOLE LOCATION (BHL)
- ⊙ = EXISTING WELL
- ⊙ = ABANDONED WELL



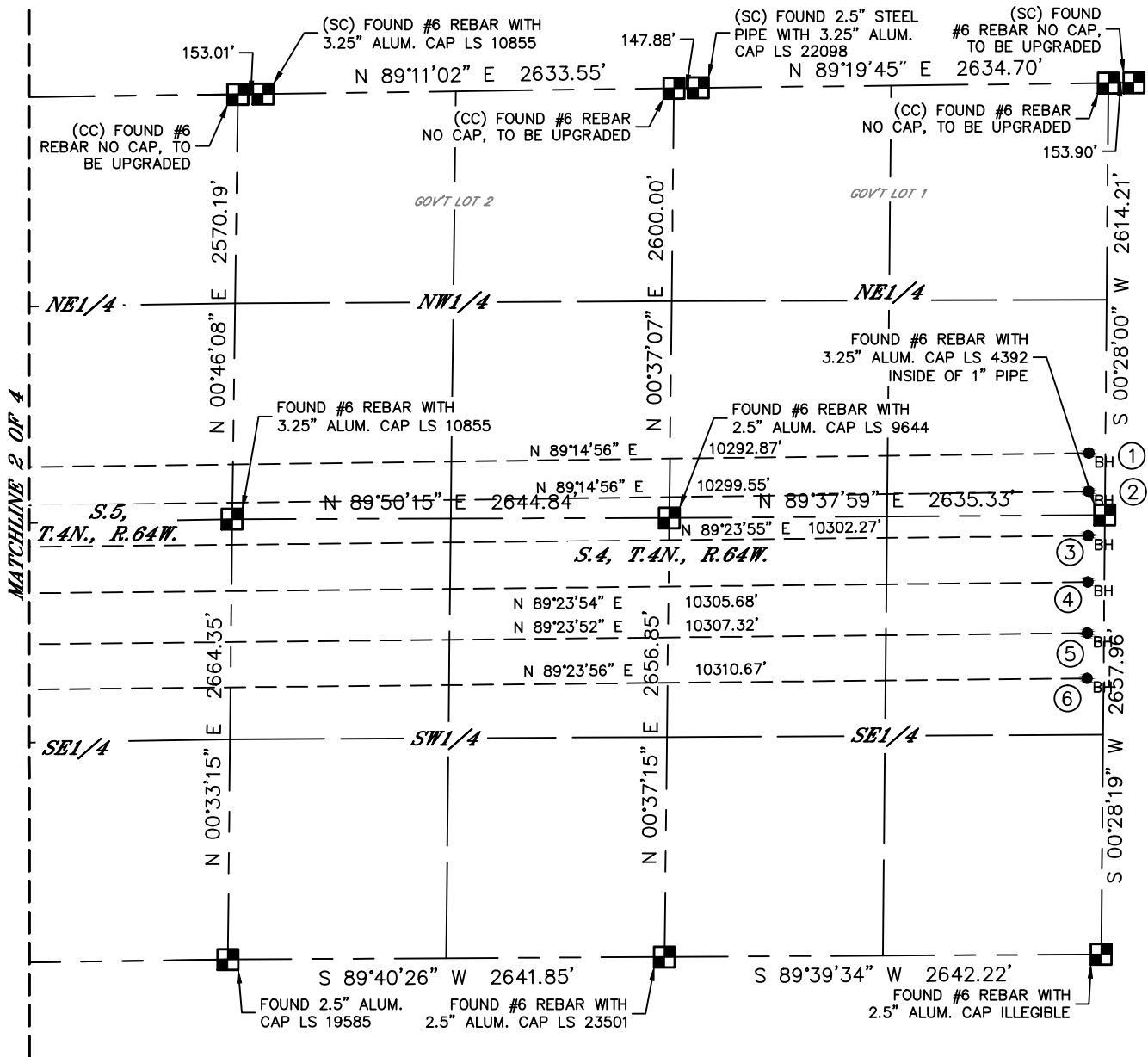


Lat40°, Inc. 6250 W. 10th Street, Unit 2, Greeley, CO 970-515-5294

MULTI-WELL PLAN

JUDY 4N64W6W PAD

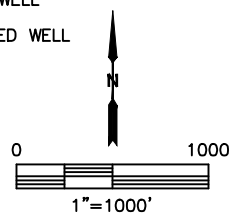
SECTION: 6
TOWNSHIP: 4N
RANGE: 64W
6TH. P.M.
WELD COUNTY, CO



#	WELL NAME	BHL FOOTAGE	BHL LAT°	BHL LONG°	BHL S-T-R
1	JUDY 6S-212	2238 FNL 100 FEL	40.34241	-104.54619	4-4N-64W
3	JUDY 6S-202	2533 FSL 100 FEL	40.34104	-104.54622	4-4N-64W
4	JUDY 6S-332	2252 FSL 100 FEL	40.34027	-104.54624	4-4N-64W
5	JUDY 6D-212	1944 FSL 100 FEL	40.33942	-104.54626	4-4N-64W
6	JUDY 6D-312	1670 FSL 100 FEL	40.33867	-104.54628	4-4N-64W
7	JUDY 6S-214	2127 FNL 50 FWL	40.34258	-104.60186	6-4N-64W
8	JUDY 6S-314	2374 FNL 50 FWL	40.34190	-104.60186	6-4N-64W
9	JUDY 6S-204	2583 FSL 50 FWL	40.34102	-104.60186	6-4N-64W
10	JUDY 6S-334	2321 FSL 100 FWL	40.34031	-104.60168	6-4N-64W
11	JUDY 6S-234	2082 FSL 100 FWL	40.33965	-104.60168	6-4N-64W
12	JUDY 6X-314	1756 FSL 100 FWL	40.33876	-104.60168	6-4N-64W

LEGEND

- = ALIQUOT MONUMENT AS DESCRIBED
- = CALCULATED POSITION
- = SURFACE HOLE LOCATION (SHL)
- ▲ = ENTRY POINT LOCATION (EP)
- = BOTTOM HOLE LOCATION (BHL)
- ⊙ = EXISTING WELL
- ⊙ = ABANDONED WELL





Lat40°, Inc. 6250 W. 10th Street, Unit 2, Greeley, CO 970-515-5294

MULTI-WELL PLAN

JUDY 4N64W6W PAD

SECTION: 6
TOWNSHIP: 4N
RANGE: 64W
6TH. P.M.
WELD COUNTY, CO



#	WELL NAME	SHL FOOTAGE				SHL LAT °	SHL LONG °	SHL PDOP	SHL ELEV (FT.)	SHL 1/4/1/4	SHL S-T-R
1	JUDY 6S-212	2414	FSL	941	FEL	40.34069	-104.58711	1.9	4794	NESE	6-4N-64W
2	JUDY 6S-302	2399	FSL	940	FEL	40.34065	-104.58711	2.0	4794	NESE	6-4N-64W
3	JUDY 6S-202	2384	FSL	940	FEL	40.34060	-104.58711	2.0	4795	NESE	6-4N-64W
4	JUDY 6S-332	2369	FSL	939	FEL	40.34056	-104.58711	1.9	4795	NESE	6-4N-64W
5	JUDY 6D-212	2354	FSL	938	FEL	40.34052	-104.58711	1.9	4795	NESE	6-4N-64W
6	JUDY 6D-312	2339	FSL	938	FEL	40.34048	-104.58711	1.9	4795	NESE	6-4N-64W
7	JUDY 6S-214	2324	FSL	937	FEL	40.34044	-104.58711	1.9	4795	NESE	6-4N-64W
8	JUDY 6S-314	2309	FSL	937	FEL	40.34040	-104.58711	1.9	4795	NESE	6-4N-64W
9	JUDY 6S-204	2294	FSL	936	FEL	40.34036	-104.58711	1.9	4795	NESE	6-4N-64W
10	JUDY 6S-334	2279	FSL	936	FEL	40.34032	-104.58711	1.8	4796	NESE	6-4N-64W
11	JUDY 6S-234	2264	FSL	935	FEL	40.34028	-104.58711	1.5	4796	NESE	6-4N-64W
12	JUDY 6X-314	2249	FSL	934	FEL	40.34023	-104.58711	1.6	4796	NESE	6-4N-64W

