

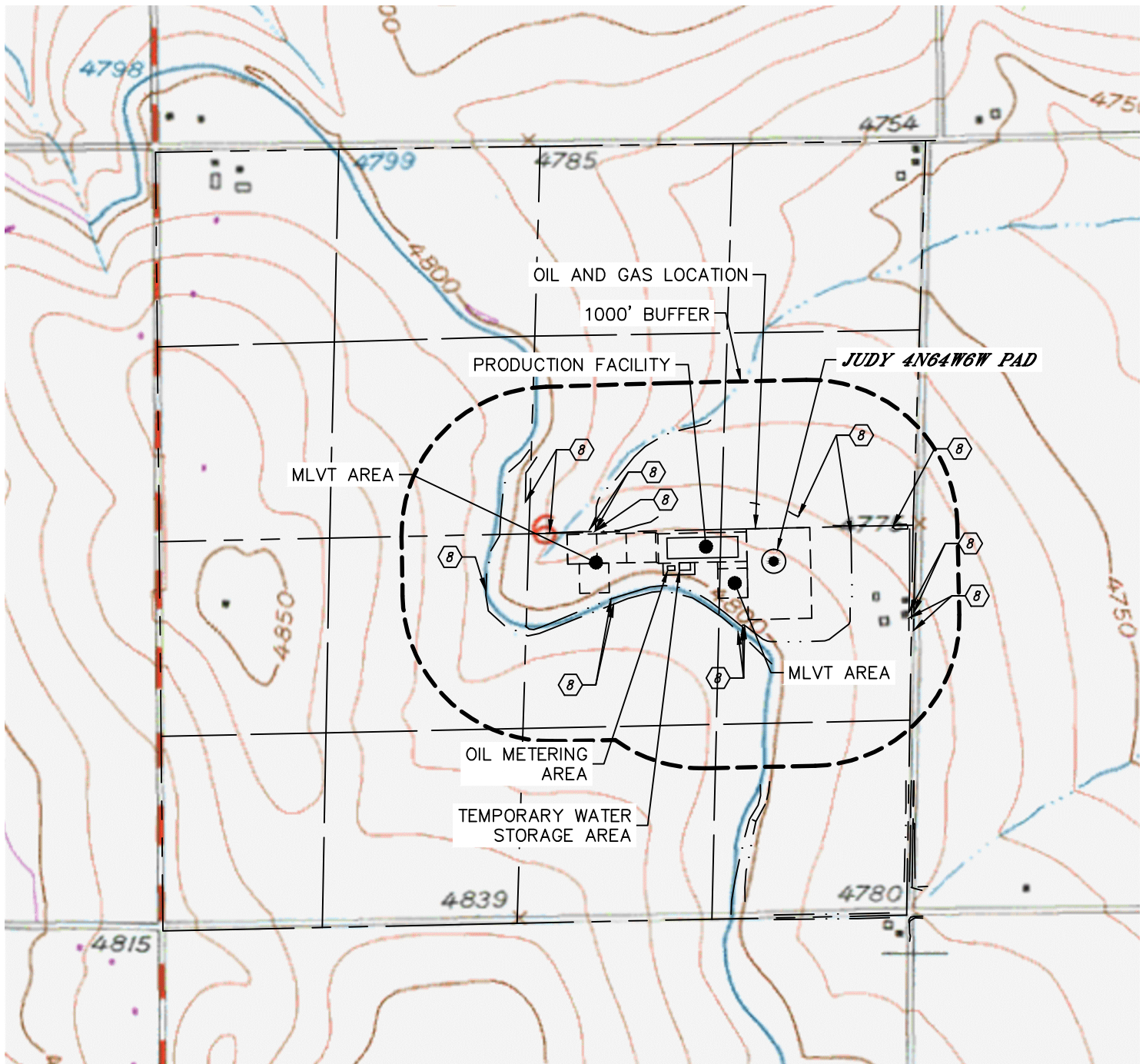


Lat40°, Inc. 6250 W. 10th Street, Unit 2, Greeley, CO 970-515-5294

HYDROLOGY MAP

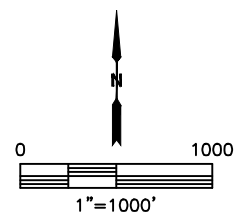
JUDY 4N64W6W PAD

SECTION: 6
TOWNSHIP: 4N
RANGE: 64W
6TH. P.M.
WELD COUNTY, CO



DISTANCES MEASURED FROM THE EDGE OF THE OIL AND GAS LOCATION.

⑧ DITCH 10', 20', 28', 74', 163' N, 158' NE, 280', 559', 658', 659', 693' E, 695' SE, 45', 84' S, 48', 64', 105' SW, 436' W, 271' NW



NEAREST DOWN GRADIENT SURFACE WATER: DITCH 10' N

DATE: 02/24/2017
PROJECT#: 2016098