



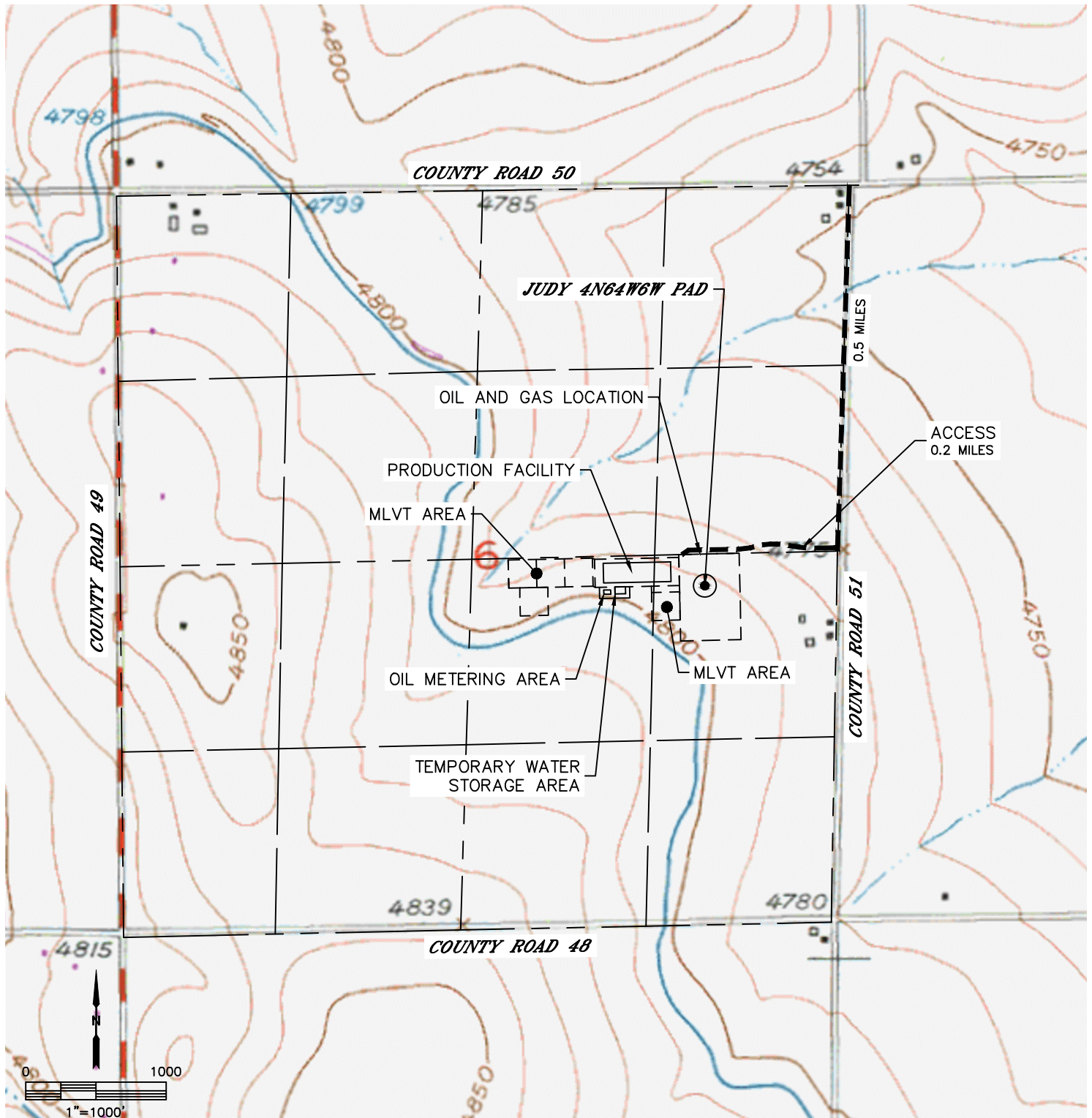
Lat40°, Inc. 6250 W. 10th Street, Unit 2, Greeley, CO 970-515-5294

ACCESS ROAD MAP

JUDY 4N64W6W PAD

SECTION: 6
TOWNSHIP: 4N
RANGE: 64W
6TH. P.M.
WELD COUNTY, CO

DRIVING DIRECTIONS TO JUDY 4N64W6W PAD
FROM THE INTERSECTION OF COUNTY ROAD 50 AND COUNTY ROAD 51, DRIVE SOUTH ALONG COUNTY ROAD 51 FOR 0.5 MILES TO THE PROPOSED ENTRANCE OF THE JUDY 4N64W6W PAD, TURN WEST AND DRIVE ALONG ACCESS ROAD 0.2 MILES TO PROPOSED PAD





Lat40°, Inc. 6250 W. 10th Street, Unit 2, Greeley, CO 970-515-5294

ACCESS ROAD MAP

JUDY 4N64W6W PAD

SECTION: 6
TOWNSHIP: 4N
RANGE: 64W
6TH. P.M.
WELD COUNTY, CO

