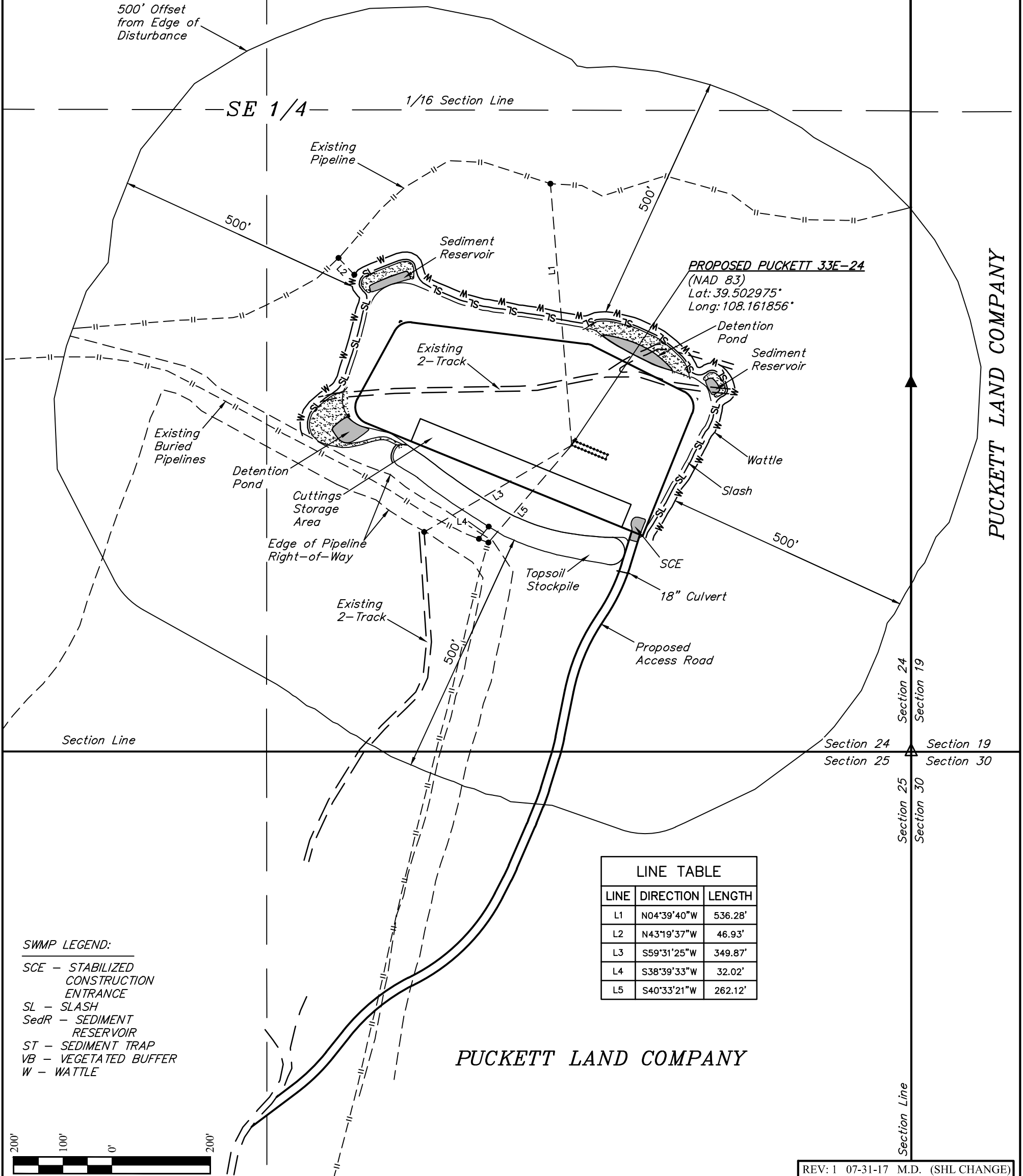


R 97
W 96

PUCKETT LAND COMPANY



SWMP LEGEND:
SCE - STABILIZED CONSTRUCTION ENTRANCE
SL - SLASH
SedR - SEDIMENT RESERVOIR
ST - SEDIMENT TRAP
VB - VEGETATED BUFFER
W - WATTLE

LINE TABLE		
LINE	DIRECTION	LENGTH
L1	N04°39'40"W	536.28'
L2	N43°19'37"W	46.93'
L3	S59°31'25"W	349.87'
L4	S38°39'33"W	32.02'
L5	S40°33'21"W	262.12'

PUCKETT LAND COMPANY



REV: 1 07-31-17 M.D. (SHL CHANGE)

Caerus Oil & Gas LLC

MESA P24-697
SE 1/4 SE 1/4, SECTION 24, T6S, R97W, 6th P.M.
GARFIELD COUNTY, COLORADO

SURVEYED BY	DATE	REVISED BY	DATE
BRIAN BAKER	12-13-15		
DRAWN BY	DATE		
M.D.	01-28-16		
SCALE	1" = 200'		

LOCATION DRAWING

FIGURE #5



UELS, LLC
Corporate Office * 85 South 200 East
Vernal, UT 84078 * (435) 789-1017