

Caerus Oil & Gas LLC

MESA P24-697
SE 1/4 SE 1/4, SECTION 24, T6S, R97W, 6th P.M.
GARFIELD COUNTY, COLORADO

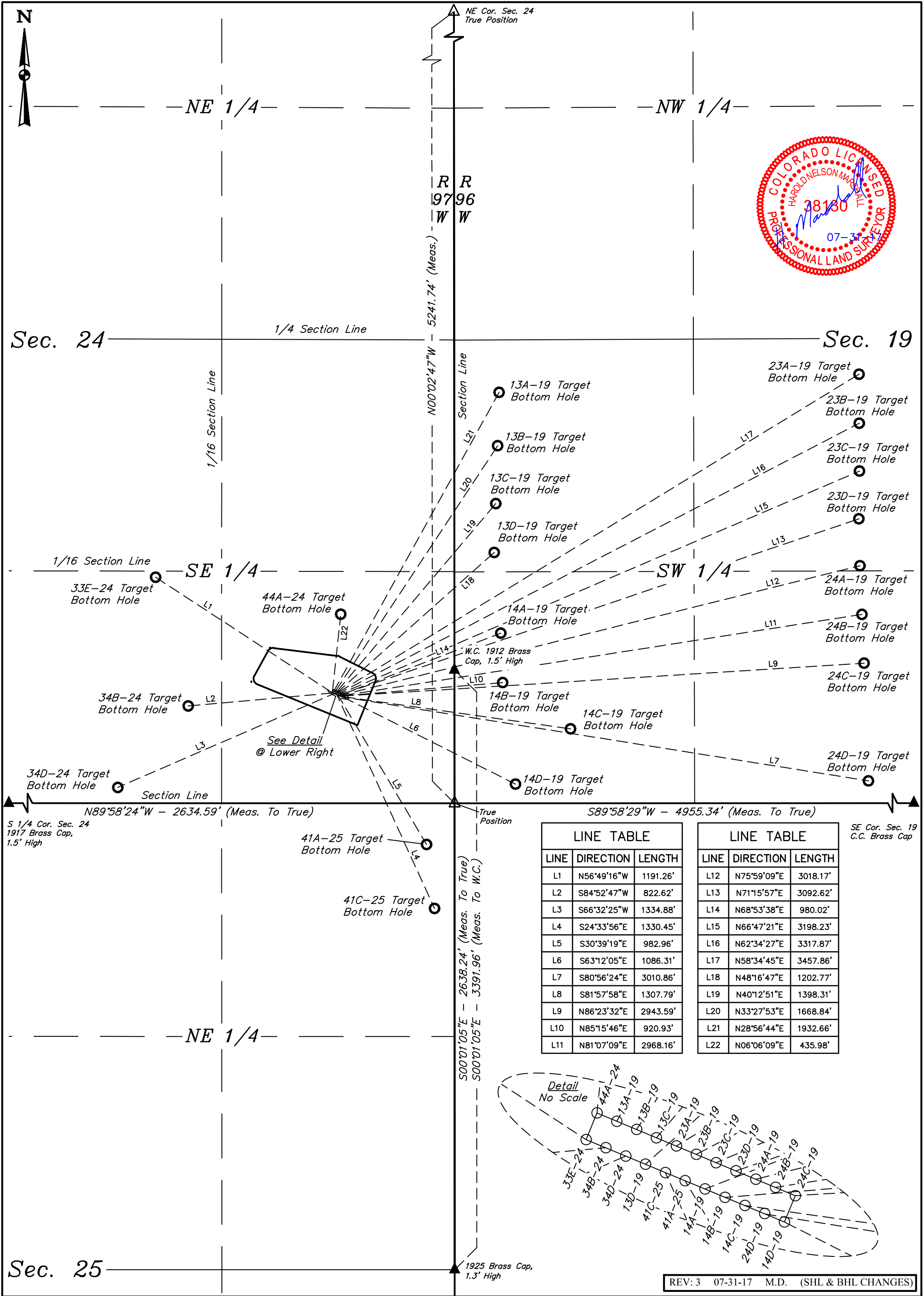
SURVEYED BY	DATE	REVISED BY	DATE
BRIAN BAKER	12-13-15		
DRAWN BY	DATE		
M.D.	01-28-16		
SCALE	1" = 60'		

TARGET BOTTOM HOLE DRAWING

FIGURE #6

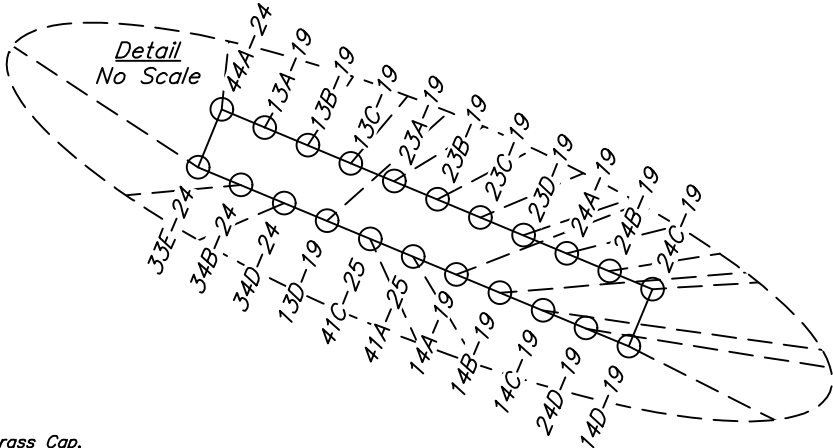


UELS, LLC
Corporate Office * 85 South 200 East
Vernal, UT 84078 * (435) 789-1017



LINE TABLE		
LINE	DIRECTION	LENGTH
L1	N56°49'16"W	1191.26'
L2	S84°52'47"W	822.62'
L3	S66°32'25"W	1334.88'
L4	S24°33'56"E	1330.45'
L5	S30°39'19"E	982.96'
L6	S63°12'05"E	1086.31'
L7	S80°56'24"E	3010.86'
L8	S81°57'58"E	1307.79'
L9	N86°23'32"E	2943.59'
L10	N85°15'46"E	920.93'
L11	N81°07'09"E	2968.16'

LINE TABLE		
LINE	DIRECTION	LENGTH
L12	N75°59'09"E	3018.17'
L13	N71°15'57"E	3092.62'
L14	N68°53'38"E	980.02'
L15	N66°47'21"E	3198.23'
L16	N62°34'27"E	3317.87'
L17	N58°34'45"E	3457.86'
L18	N48°16'47"E	1202.77'
L19	N40°12'51"E	1398.31'
L20	N33°27'53"E	1668.84'
L21	N28°56'44"E	1932.66'
L22	N06°06'09"E	435.98'



REV: 3 07-31-17 M.D. (SHL & BHL CHANGES)

LEGEND:

- = TARGET BOTTOM HOLE.
- ▲ = SECTION CORNERS LOCATED. (NAD 83)
- △ = SECTION CORNERS RE-ESTABLISHED. (Not Set on Ground.) (NAD 83)



UELS, LLC
Corporate Office * 85 South 200 East
Vernal, UT 84078 * (435) 789-1017

Caerus Oil & Gas LLC

MESA P24-697
SE 1/4 SE 1/4, SECTION 24, T6S, R97W, 6th P.M.
GARFIELD COUNTY, COLORADO

SURVEYED BY	DATE		
BRIAN BAKER	12-13-15		
DRAWN BY	DATE		
M.D.	01-28-16		
SCALE	1" = 60'		

MULTI-WELL PLAN

FIGURE #7