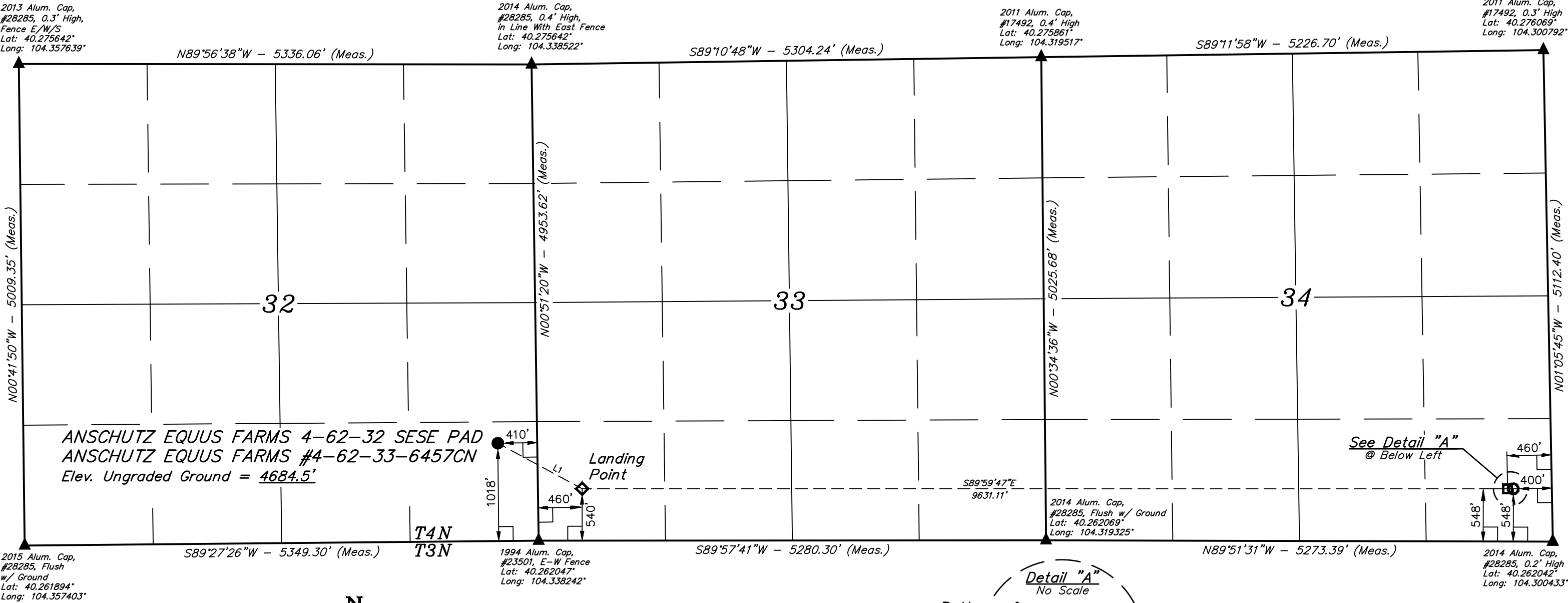
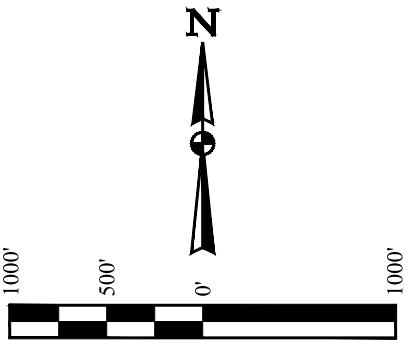


T4N, R62W, 6th P.M.

BILL BARRETT CORPORATION  
ANSCHUTZ EQUUS FARMS 4-62-32 SESE PAD  
ANSCHUTZ EQUUS FARMS #4-62-33-6457CN  
SE 1/4 SE 1/4, SECTION 32, T4N, R62W, 6th P.M.  
WELD COUNTY, COLORADO

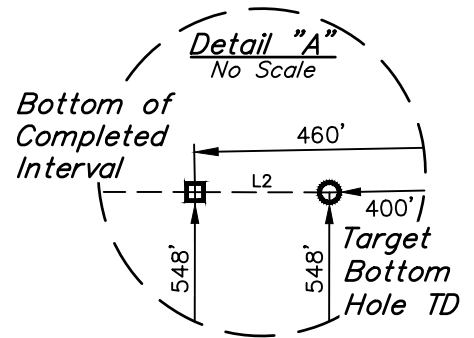


- LEGEND:**
- 90° SYMBOL
  - PROPOSED WELLHEAD.
  - LANDING POINT.
  - BOTTOM OF COMPLETED INTERVAL.
  - TARGET BOTTOM HOLE TD.
  - SECTION CORNERS LOCATED. (NAD 83)



LINE TABLE		
LINE	DIRECTION	LENGTH
L1	S61°37'50"E	996.94'
L2	S89°51'31"E	60.01'

PDOP = 1.2



**BASIS OF BEARINGS**  
BASIS OF BEARINGS IS A G.P.S. OBSERVATION  
**BASIS OF ELEVATION**

SPOT ELEVATION LOCATED AT THE NORTHEAST CORNER OF SECTION 24, T5N, R62W, 6th P.M. TAKEN FROM THE POINT OF ROCKS, QUADRANGLE, COLORADO, WELD COUNTY, 7.5 MINUTE QUAD (TOPOGRAPHIC MAP) PUBLISHED BY THE UNITED STATES DEPARTMENT OF THE INTERIOR, GEOLOGICAL SURVEY. SAID ELEVATION IS MARKED AS BEING 4530 FEET.

REV: 2 06-14-17 C.C. (LP & BHL CHANGE)

THIS IS TO CERTIFY THAT THE ABOVE PLAT WAS PREPARED FROM FIELD NOTES OF ACTUAL SURVEYS MADE BY ME OR UNDER MY SUPERVISION AND THAT THE SAME ARE TRUE AND CORRECT TO THE BEST OF MY KNOWLEDGE AND BELIEF.





**UELS, LLC**  
Corporate Office \* 85 South 200 East  
Vernal, UT 84078 \* (435) 789-1017

SURVEYED BY	DALLAS NIELSEN, N.P.	12-19-16	SCALE
DRAWN BY	J.J.	01-19-17	1" = 1000'

**WELL LOCATION PLAT**