

T4N, R62W, 6th P.M.

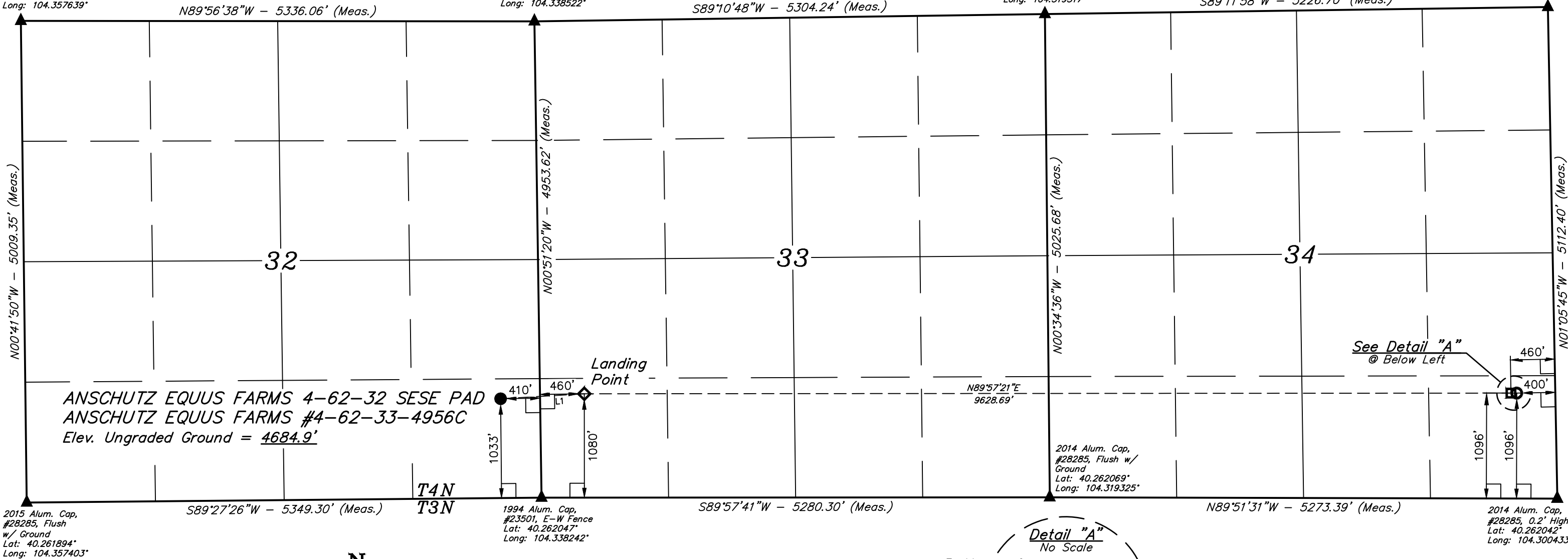
BILL BARRETT CORPORATION
ANSCHUTZ EQUUS FARMS 4-62-32 SESE PAD
ANSCHUTZ EQUUS FARMS #4-62-33-4956C
SE 1/4 SE 1/4, SECTION 32, T4N, R62W, 6th P.M.
WELD COUNTY, COLORADO

2013 Alum. Cap,
#28285, 0.3' High,
Fence E/W/S
Lat: 40.275642°
Long: 104.357639°

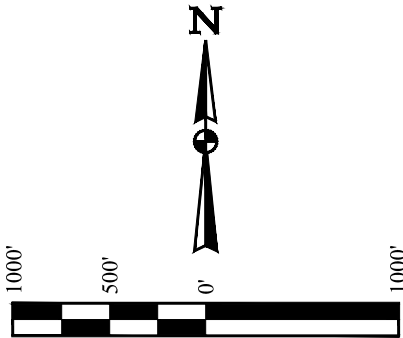
2014 Alum. Cap,
#28285, 0.4' High,
in Line With East Fence
Lat: 40.275642°
Long: 104.338522°

2011 Alum. Cap,
#17492, 0.4' High
Lat: 40.275861°
Long: 104.319517°

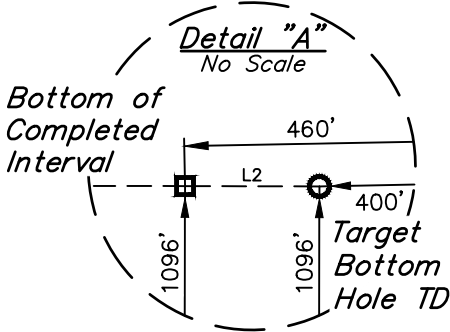
2011 Alum. Cap,
#17492, 0.3' High
Lat: 40.276069°
Long: 104.300792°



- LEGEND:**
- 90° SYMBOL
 - PROPOSED WELLHEAD.
 - LANDING POINT.
 - BOTTOM OF COMPLETED INTERVAL.
 - TARGET BOTTOM HOLE TD.
 - SECTION CORNERS LOCATED. (NAD 83)



LINE TABLE		
LINE	DIRECTION	LENGTH
L1	N86°37'38"E	870.83'
L2	S89°51'31"E	60.01'



BASIS OF BEARINGS
BASIS OF BEARINGS IS A G.P.S. OBSERVATION
BASIS OF ELEVATION

SPOT ELEVATION LOCATED AT THE NORTHEAST CORNER OF SECTION 24, T5N, R62W, 6th P.M. TAKEN FROM THE POINT OF ROCKS, QUADRANGLE, COLORADO, WELD COUNTY, 7.5 MINUTE QUAD (TOPOGRAPHIC MAP) PUBLISHED BY THE UNITED STATES DEPARTMENT OF THE INTERIOR, GEOLOGICAL SURVEY. SAID ELEVATION IS MARKED AS BEING 4530 FEET.

REV: 2 06-14-17 C.C. (LP & BHL CHANGE)

THIS IS TO CERTIFY THAT THE ABOVE PLAT WAS PREPARED FROM FIELD NOTES OF ACTUAL SURVEYS MADE BY ME OR UNDER MY SUPERVISION AND THAT THE SAME ARE TRUE AND CORRECT TO THE BEST OF MY KNOWLEDGE AND BELIEF.



UELS, LLC
Corporate Office * 85 South 200 East
Vernal, UT 84078 * (435) 789-1017

SURVEYED BY	DALLAS NIELSEN, N.P.	12-19-16	SCALE
DRAWN BY	J.J.	01-19-17	1" = 1000'

WELL LOCATION PLAT

NAD 83 (SURFACE LOCATION)	NAD 83 (LANDING POINT)	NAD 83 (BTM. OF COMPLETED INT.)	NAD 83 (TARGET BOTTOM HOLE TD)
LATITUDE = 40°15'53.54" (40.264872) LONGITUDE = 104°20'23.16" (104.339767)	LATITUDE = 40°15'54.05" (40.265014) LONGITUDE = 104°20'11.95" (104.336653)	LATITUDE = 40°15'54.18" (40.265050) LONGITUDE = 104°18'07.77" (104.302158)	LATITUDE = 40°15'54.18" (40.265050) LONGITUDE = 104°18'07.00" (104.301944)
NAD 27 (SURFACE LOCATION)	NAD 27 (LANDING POINT)	NAD 27 (BTM. OF COMPLETED INT.)	NAD 27 (TARGET BOTTOM HOLE TD)
LATITUDE = 40°15'53.61" (40.264892) LONGITUDE = 104°20'21.33" (104.339258)	LATITUDE = 40°15'54.12" (40.265033) LONGITUDE = 104°20'10.12" (104.336144)	LATITUDE = 40°15'54.25" (40.265069) LONGITUDE = 104°18'05.95" (104.301653)	LATITUDE = 40°15'54.25" (40.265069) LONGITUDE = 104°18'05.17" (104.301436)
STATE PLANE NAD 83 (CO. NORTH)	STATE PLANE NAD 83 (CO. NORTH)	STATE PLANE NAD 83 (CO. NORTH)	STATE PLANE NAD 83 (CO. NORTH)
N: 1341452.19 E: 3323771.52	N: 1341515.54 E: 3324639.81	N: 1341657.39 E: 3334264.93	N: 1341658.08 E: 3334324.92
STATE PLANE NAD 27 (CO. NORTH)	STATE PLANE NAD 27 (CO. NORTH)	STATE PLANE NAD 27 (CO. NORTH)	STATE PLANE NAD 27 (CO. NORTH)
N: 341454.99 E: 2323921.90	N: 341518.34 E: 2324790.19	N: 341660.27 E: 2334415.31	N: 341660.96 E: 2334475.31