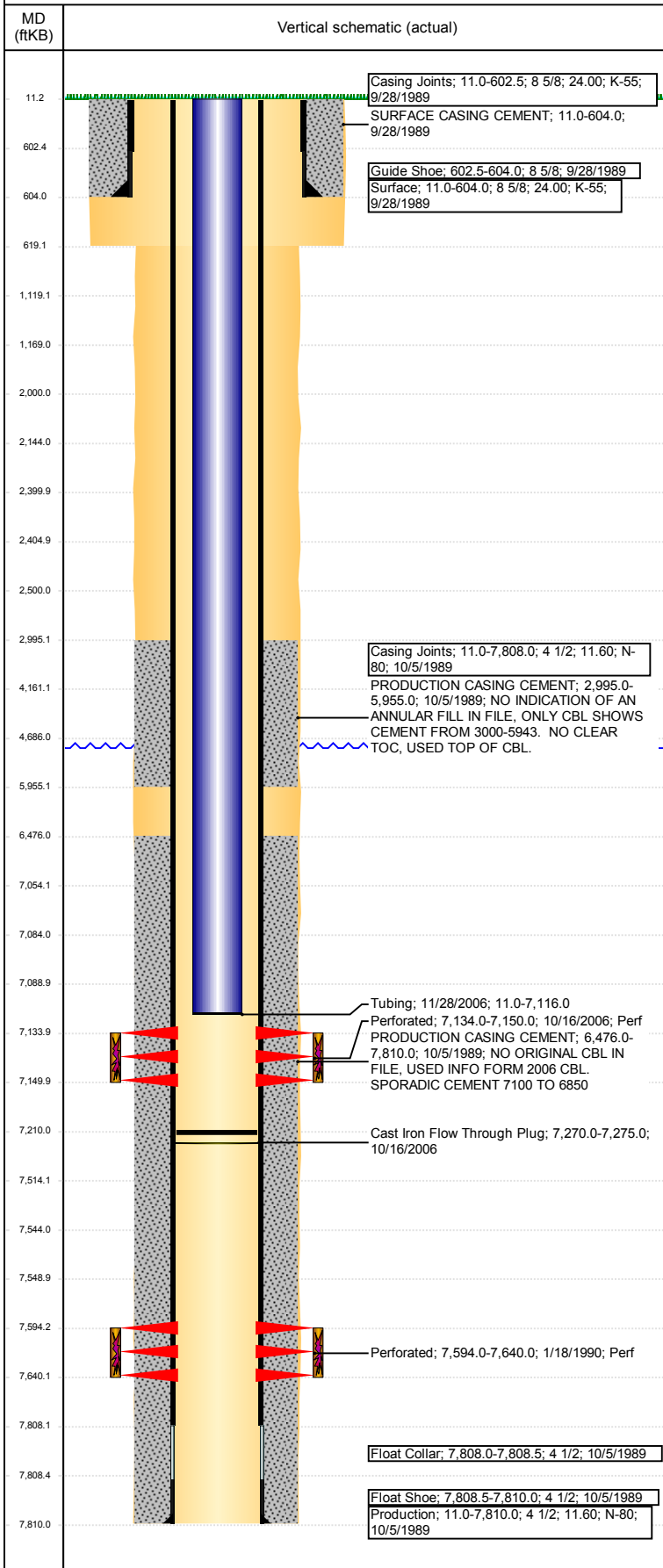


Wellbore Schematic Input Report

Well Name: HARKIS 01-07

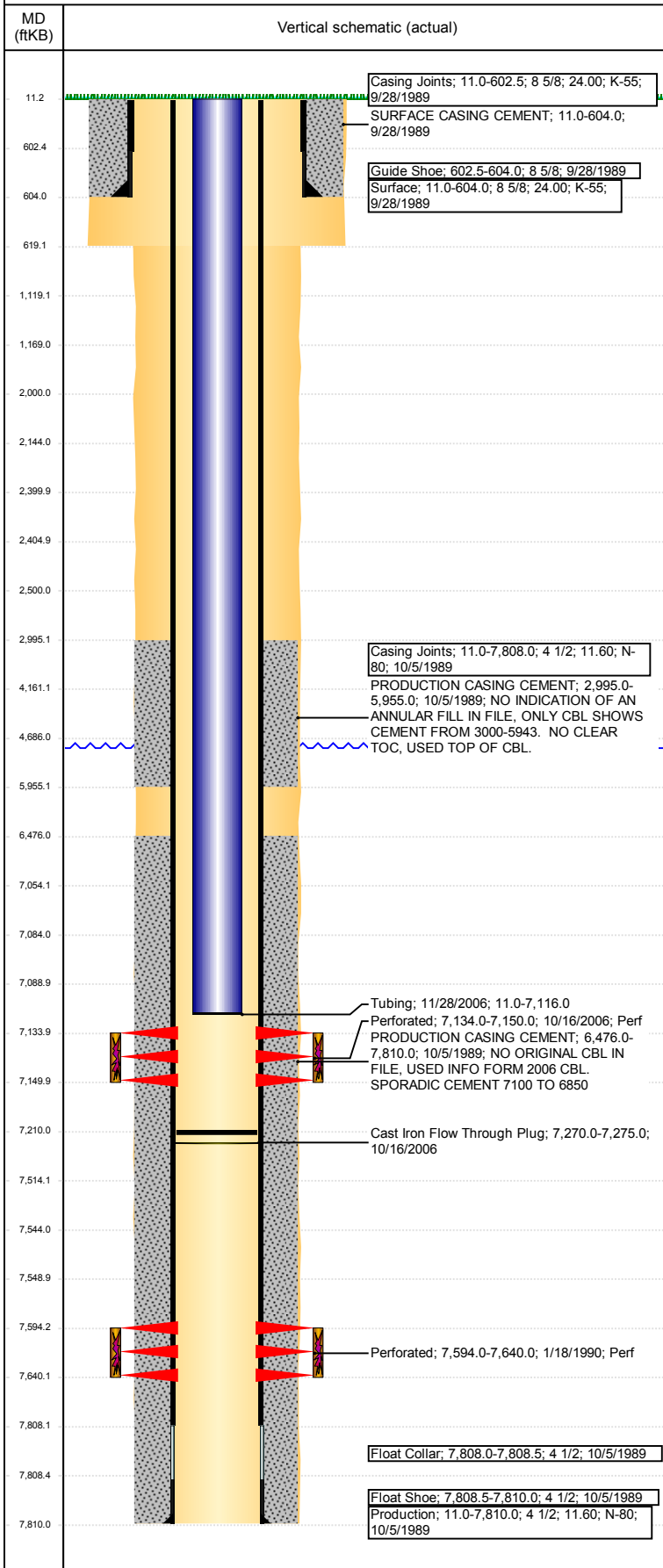
VERTICAL - ORIGINAL HOLE, 8/3/2017 1:58:14 PM



| Well Header | | | | | | |
|---|-------------------------------|--------------------|------------------------|-----------------------------|-------------------------|--------------------------------|
| API 05-123-14417 | Business Unit DJ BASIN | | District 15 | | Well Config VERTICAL | |
| Original KB Elevation (ft) 4,926 | KB - GL / MSL (ftKB) 11.00 | | Spud Date 9/27/1989 | | P & A Date | |
| Comment NO INDICATION IN FILE OF AN ANNULAR FILL. ONLY EVIDENCE IS IN A CBL RUN IN 2006. | | | | | | |
| Directions To Well | | | | | | |
| Congressional Location | | | | | | |
| Quarter 3 SW | Quarter 4 NW | Section 7 | Township 2 | Twntshp N/S Dir N | Range 64 | Range E/W Dir W |
| Bottom Hole Location | | | | | | |
| North-South Distance (ft) | | From N or S Line | | East-West Distance (ft) | | From E or W Line |
| Plug Back Total Depths | | | | | | |
| Date | Depth (ftKB) | Method | | Com | | |
| 10/13/2006 | 7,749.0 | TAG | | CLEAN OUT | | |
| 10/16/2006 | 7,270.0 | TAG | | CIPF | | |
| 11/28/2006 | 7,210.0 | TAG | | NO TAG | | |
| Wellbore Sections | | | | | | |
| Section Des | | Size (in) | | Act Top, MD (ftKB) | | Act Btm, MD (ftKB) |
| SURFACE | | 12 1/4 | | 11 | | 619 |
| PRODUCTION | | 7 7/8 | | 619 | | 7,810 |
| Zone Statuses | | | | | | |
| Zone Name | Status Date | Status | Fluid Type | Job | Prod Method | |
| CODELL | 11/8/2006 | PR | Water | RECOMPLETI... | Flowing | |
| CODELL | 9/23/2011 | PR | | | | |
| CODELL | 5/9/2017 | SI | | | | |
| J SAND | 2/15/1990 | PR | | | | |
| J SAND | 11/8/2006 | PR | Water | RECOMPLETI... | Flowing | |
| J SAND | 9/23/2011 | PR | | | | |
| J SAND | 5/9/2017 | SI | | | | |
| Casing Strings | | | | | | |
| Surface, 604.0ftKB | | | | | | |
| Casing Description Surface | Run Date 9/28/1989 | OD (in) 8 5/8 | Wt/Len (l... 24.00 | Grade K-55 | Top, MD (ft... 11.0 | MD (ftKB) 604.0 |
| Production, 7,810.0ftKB | | | | | | |
| Casing Description Production | Run Date 10/5/1989 | OD (in) 4 1/2 | Wt/Len (l... 11.60 | Grade N-80 | Top, MD (ft... 11.0 | MD (ftKB) 7,810.0 |
| Cement | | | | | | |
| Description SURFACE CASING CEMENT | | | | Top Depth (ftKB) 11.0 | | Bottom Depth (ftKB) 604.0 |
| Description PRODUCTION CASING CEMENT | | | | Top Depth (ftKB) 2,995.0 | | Bottom Depth (ftKB) 5,955.0 |
| Description PRODUCTION CASING CEMENT | | | | Top Depth (ftKB) 6,476.0 | | Bottom Depth (ftKB) 7,810.0 |
| Description Dump Bail | | | | Top Depth (ftKB) 7,514.0 | | Bottom Depth (ftKB) 7,544.0 |
| Description Dump Bail | | | | Top Depth (ftKB) 7,054.0 | | Bottom Depth (ftKB) 7,084.0 |
| Description Balance Plug | | | | Top Depth (ftKB) 4,161.0 | | Bottom Depth (ftKB) 4,686.0 |
| Description Casing Repair Cement | | | | Top Depth (ftKB) 2,000.0 | | Bottom Depth (ftKB) 2,500.0 |
| Description Cement Plug | | | | Top Depth (ftKB) 2,405.0 | | Bottom Depth (ftKB) 2,500.0 |
| Description Cement Plug | | | | Top Depth (ftKB) 2,144.0 | | Bottom Depth (ftKB) 2,400.0 |
| Description Shoe Plug | | | | Top Depth (ftKB) 1,119.0 | | Bottom Depth (ftKB) 1,169.0 |
| Description Shoe Plug | | | | Top Depth (ftKB) 604.0 | | Bottom Depth (ftKB) 619.0 |
| Description Shoe Plug | | | | Top Depth (ftKB) 619.0 | | Bottom Depth (ftKB) 1,119.0 |
| Description Shoe Plug | | | | Top Depth (ftKB) 11.0 | | Bottom Depth (ftKB) 604.0 |
| Tubing Strings | | | | | | |
| Tubing Description Tubing | Run Date 11/28/2006 | String... 2 3/8 | ID (in) 2.00 | Wt (lb/ft) 4.70 | Grade J-55 | Len (ft) 7,105.00 |

Well Name: HARKIS 01-07

VERTICAL - ORIGINAL HOLE, 8/3/2017 1:58:14 PM



| Other In Hole | | | | |
|---------------|-----------------------|---------|------------|------------|
| Run Date | Des | OD (in) | Top (ftKB) | Btm (ftKB) |
| 7/17/2017 | Cast Iron Bridge Plug | 4 | 7,544.0 | 7,549.0 |
| 7/17/2017 | Cast Iron Bridge Plug | 4 | 7,084.0 | 7,089.0 |
| 7/17/2017 | Cement Retainer | 4 | 2,400.0 | 2,405.0 |

| Logs | | | |
|------------|---------------------|----------------|----------------|
| Date | Type | Top, MD (ftKB) | Btm, MD (ftKB) |
| 10/4/1989 | COMPENSATED DENSITY | 4,500.0 | 7,790.0 |
| 10/4/1989 | INDUCTION | 11.0 | 7,804.0 |
| 10/16/2006 | CBL/CCL/GR | 5,000.0 | 7,143.0 |
| 10/16/2006 | GAMMA RAY | 6,495.0 | 7,716.0 |

| Perforation Data | | | | | |
|-----------------------|-----------|---------------------------|------------|------------|------------|
| Linked Zone | Bnch/St g | Sum of Entered Shot Total | Top (ftKB) | Btm (ftKB) | Date |
| | | 0 | 2,500.00 | 2,500.00 | 7/17/2017 |
| CODELL, ORIGINAL HOLE | | 64 | 7,134.00 | 7,150.00 | 10/16/2006 |
| J SAND, ORIGINAL HOLE | | 177 | 7,594.00 | 7,640.00 | 1/18/1990 |
| Total (Sum) | | 241 | | | |

| Stimulation Intervals | | |
|-----------------------|--------------------------------|------------------|
| Start Date | Primary Job Type | |
| 2/5/1990 | DRILLING/COMPLETION - ORIGINAL | |
| Technical Result | Tech Result Details | Tech Result Note |
| Comment | | |
| Start Date | Primary Job Type | |
| 11/7/2006 | RECOMPLETION | |
| Technical Result | Tech Result Details | Tech Result Note |
| Comment | | |